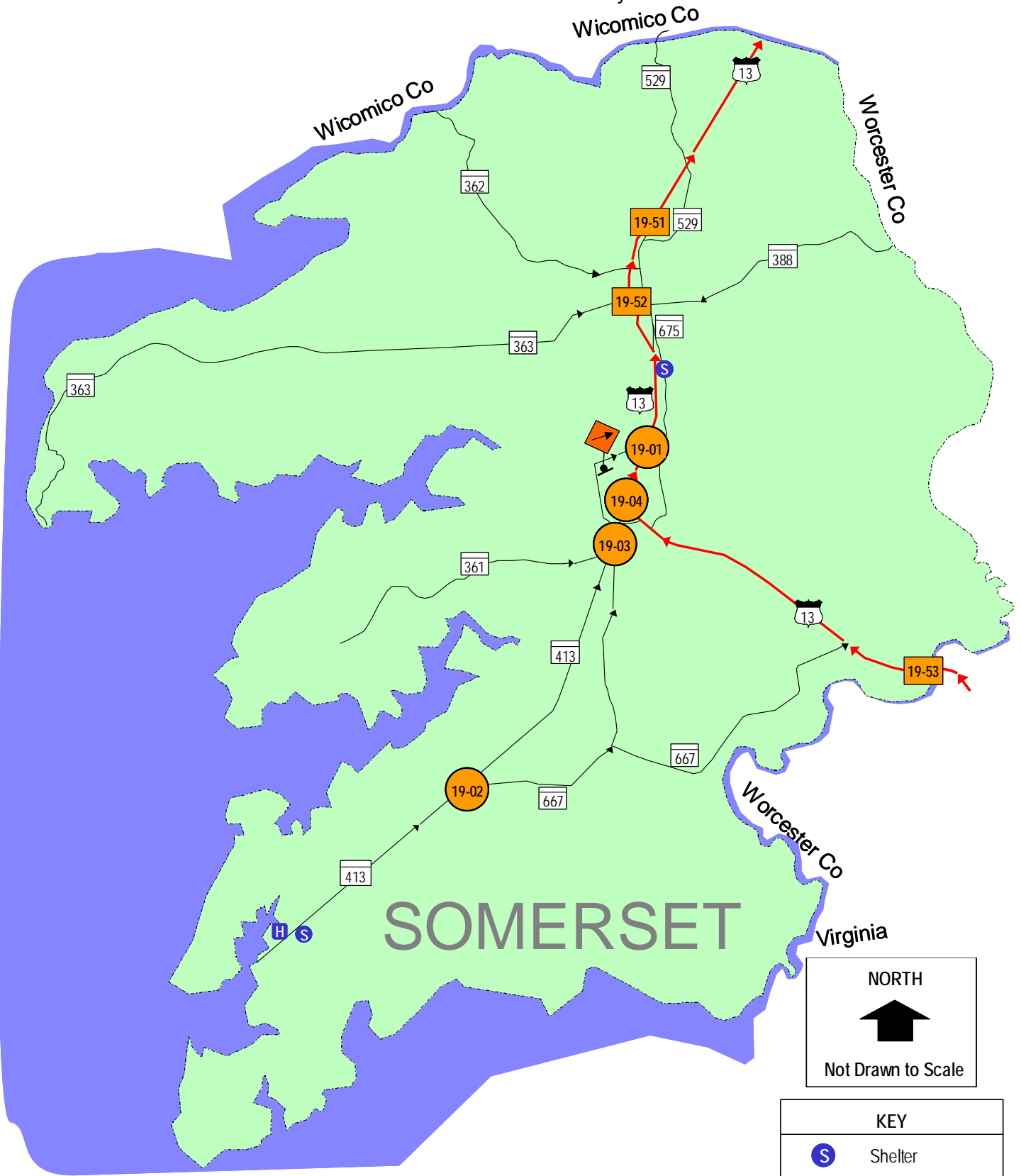
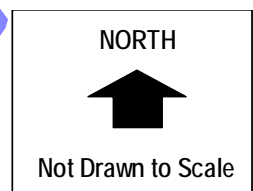


SHA's Hurricane Evacuation Traffic Control Plan for the Maryland Eastern Shore



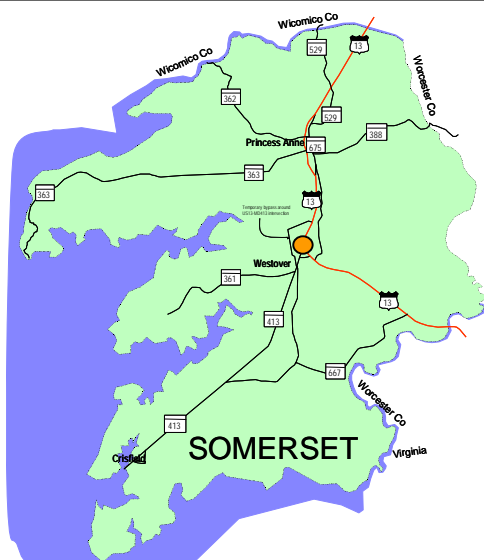
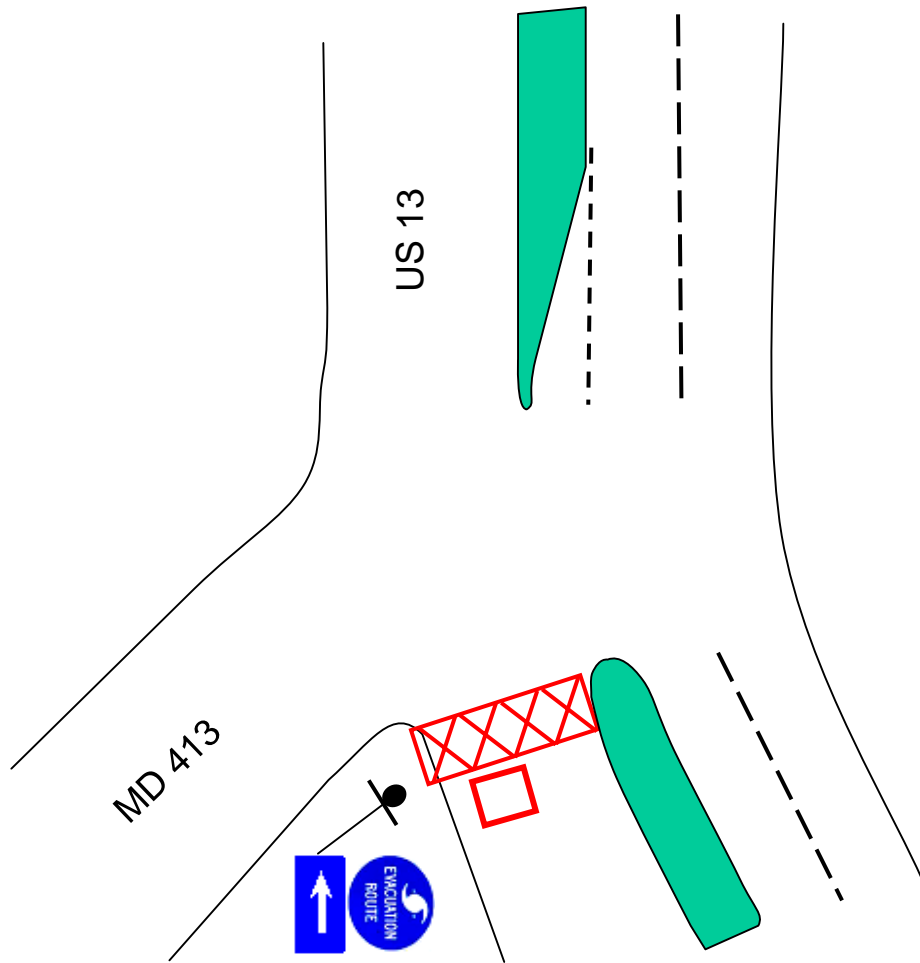
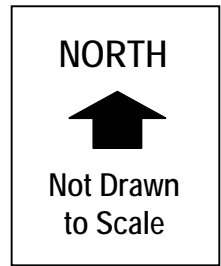
# Somerset

## County Number 19



KEY	
	Shelter
	Hospital
	TCP
	Key Intersection

SHA's Hurricane Evacuation Traffic Control Plan for the Maryland Eastern Shore



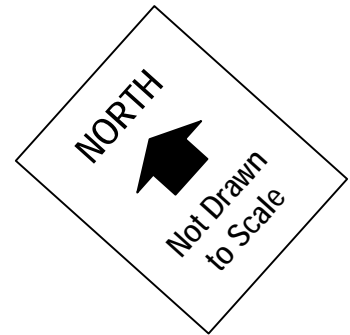
DRAFT

KEY	
	Personnel
	Road Block
	Traffic Signal
	Sign

# Somerset County

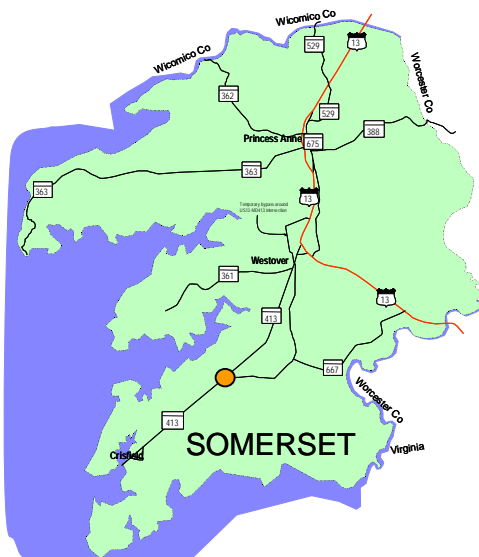
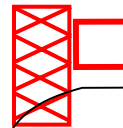
TCP # 19-01  
 US 13  
 and  
 MD 413

SHA's Hurricane Evacuation Traffic Control Plan for the Maryland Eastern Shore





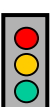

MD 413

MD 667



DRAFT

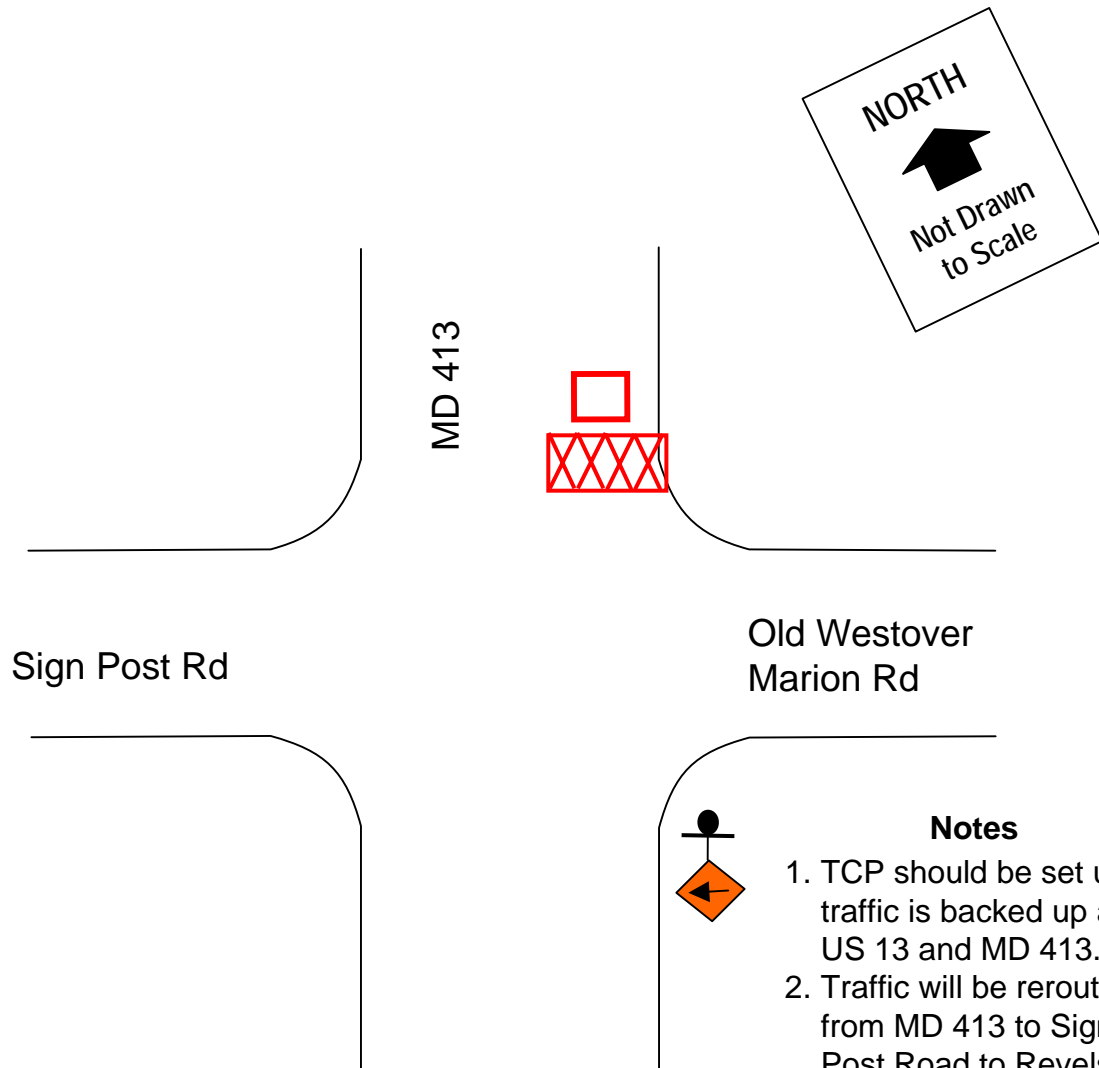
KEY

-  Personnel
-  Road Block
-  Traffic Signal
-  Sign

Somerset  
County

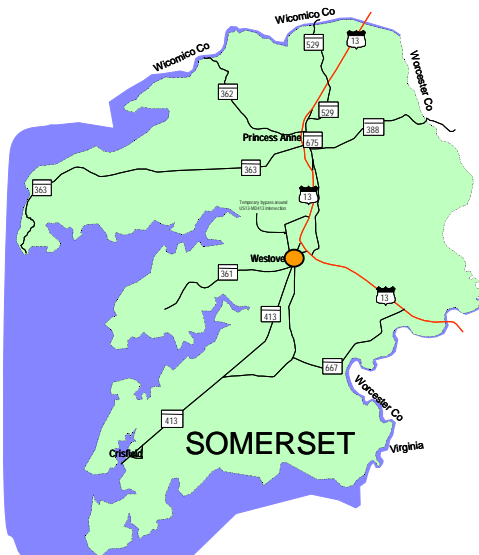
TCP # 19-02  
MD 413  
and  
MD 667

SHA's Hurricane Evacuation Traffic Control Plan for the Maryland Eastern Shore



**Notes**

1. TCP should be set up if traffic is backed up at US 13 and MD 413.
2. Traffic will be rerouted from MD 413 to Sign Post Road to Revals Neck Road to US 13, which allows MD 413 traffic to enter US 13 at a traffic light.



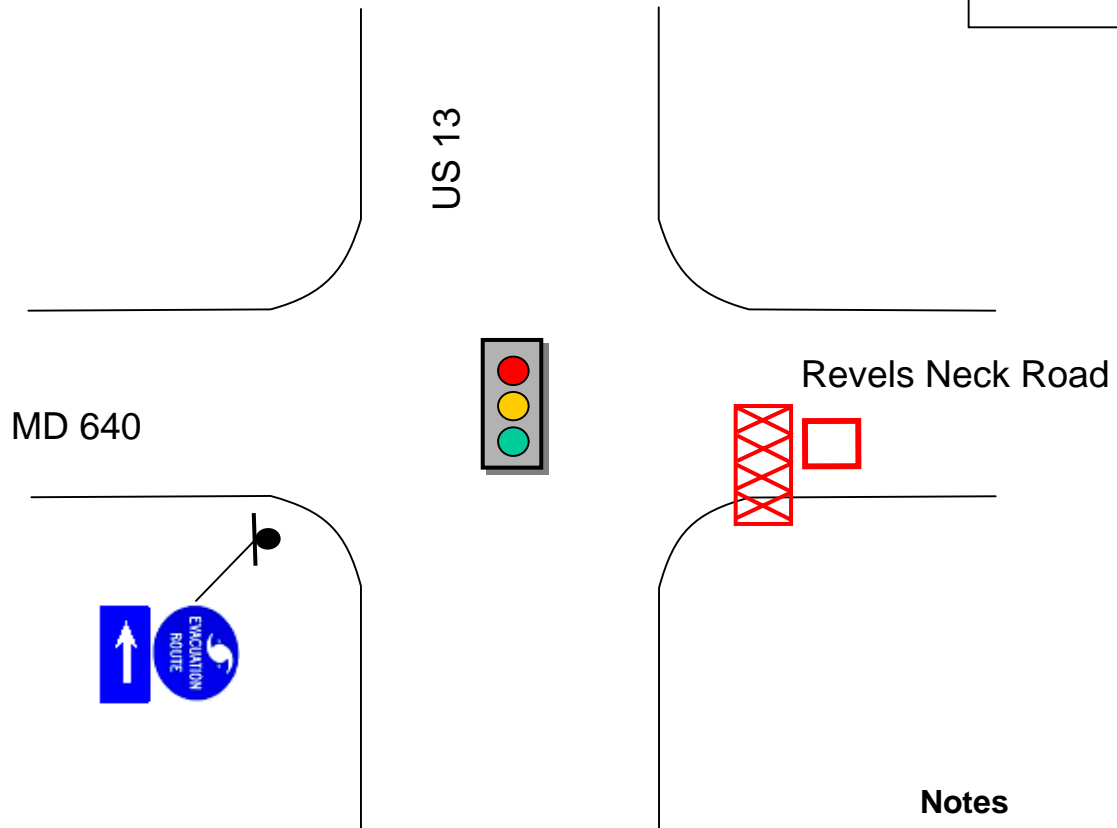
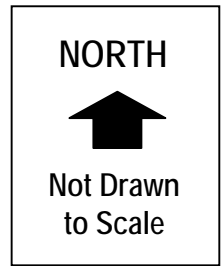
**KEY**

- Personnel
- Road Block
- Traffic Signal
- Sign

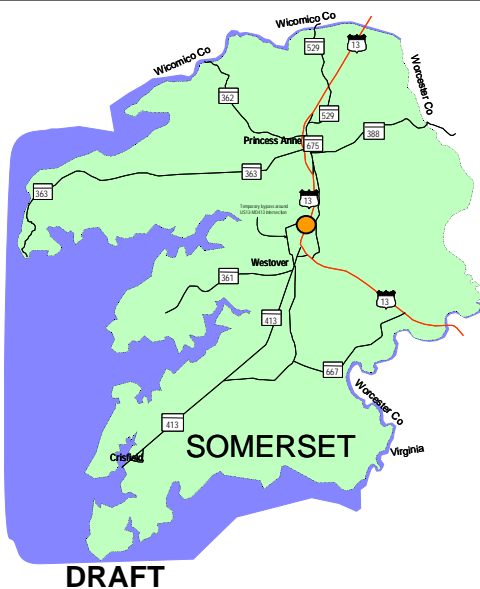
# Somerset County

TCP # 19-03  
MD 413  
and  
Sign Post Rd

SHA's Hurricane Evacuation Traffic Control Plan for the Maryland Eastern Shore



- Notes**
1. TCP should be set up if traffic is backed up at US 13 and MD 413.



KEY	
	Personnel
	Road Block
	Traffic Signal
	Sign

# Somerset County

TCP # 19-04  
US 13  
and  
MD 640