

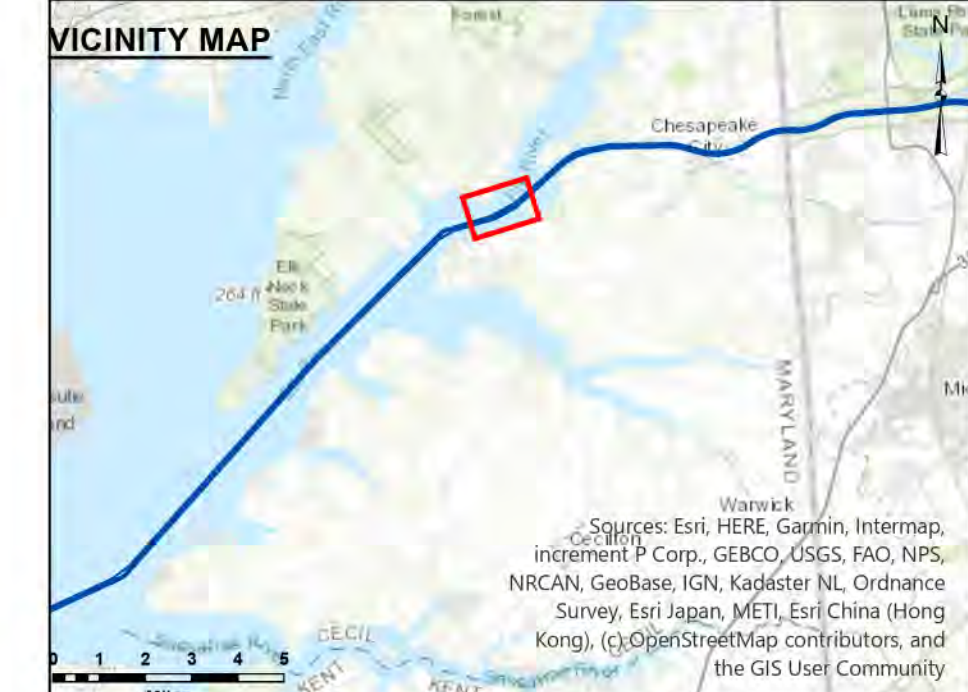
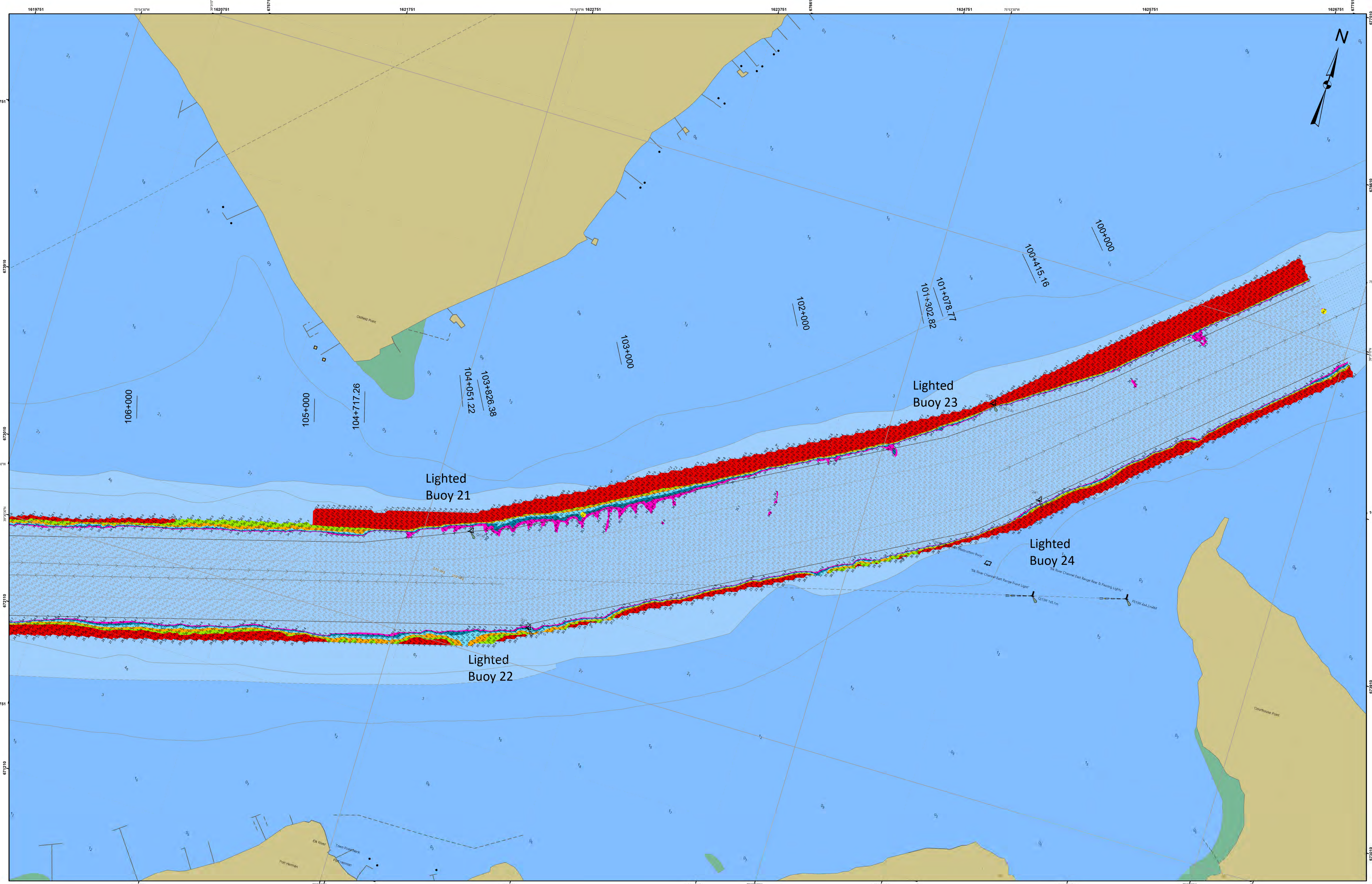
STA. 99+000 to STA. 106+000 -- 12 FEB 25
 STA. 105+000 to STA. 109+879 -- 18 FEB 25

DISCLAIMER: The information provided on this map is the property of the U.S. Army Corps of Engineers and is not to be distributed, copied, or reproduced in any form without the express written permission of the U.S. Army Corps of Engineers. The information is provided for informational purposes only and does not constitute a warranty of accuracy or completeness. The information is provided as is and the U.S. Army Corps of Engineers does not assume any liability for errors or omissions. The information is provided for informational purposes only and does not constitute a warranty of accuracy or completeness. The information is provided as is and the U.S. Army Corps of Engineers does not assume any liability for errors or omissions.

Surveyed By:	U.S. ARMY CORPS OF ENGINEERS PHILADELPHIA DISTRICT
Drawn By:	E. Anthony
Checked By:	E. Anthony
Approved:	Chief Survey Section

**Chesapeake Bay Approach Channel
 Bull Minnow Point to Old Town Point Wharf
 Examination**
 STA. 99+000 TO STA. 113+000

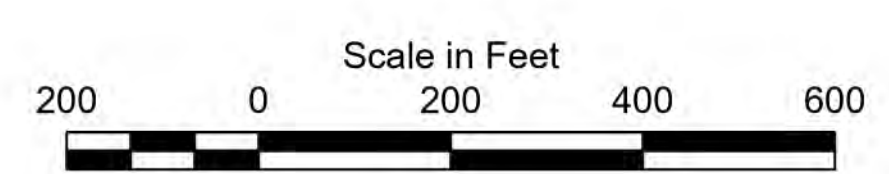
E-CD-130



1. THIS SURVEY MEETS STANDARDS AS OUTLINED IN CORPS OF ENGINEERS' HYDROGRAPHIC SURVEY MANUAL EM1110-2-1003, DATED NOVEMBER 30, 2013 FOR NAVIGATION AND DREDGING SUPPORT SURVEYS.
2. HORIZONTAL REFERENCE - NAD 83, MARYLAND STATE PLANE, ZONE 1900, U.S. FOOT.
3. VERTICAL REFERENCE - MEAN LOWER LOW WATER, WHICH IS BELOW N.A.V.D. 88 BY THE FOLLOWING:
 1.35' FROM STA. 99+000 TO STA. 101+078.77
 1.28' FROM STA. 101+078.77 TO STA. 109+879.2
 1.22' FROM STA. 109+879.2 TO STA. 113+000
4. GEOID 12B AND NOAA TIDAL EPOCH: 1983 - 2001 WERE USED. SOUNDINGS ARE EXPRESSED IN FEET AND TENTHS AND REFER TO MEAN LOWER LOW WATER.

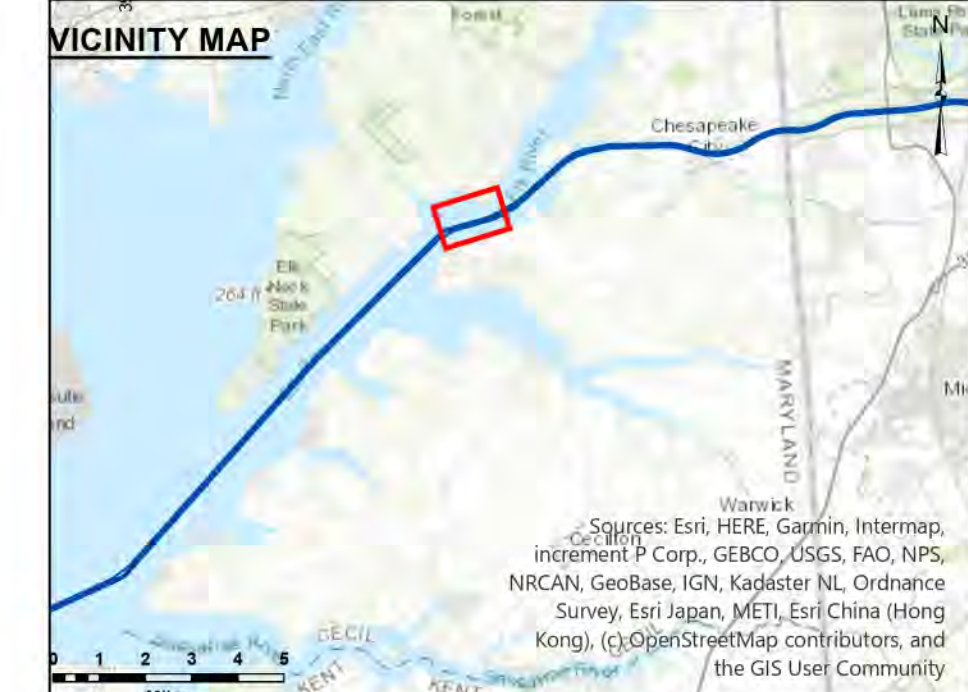
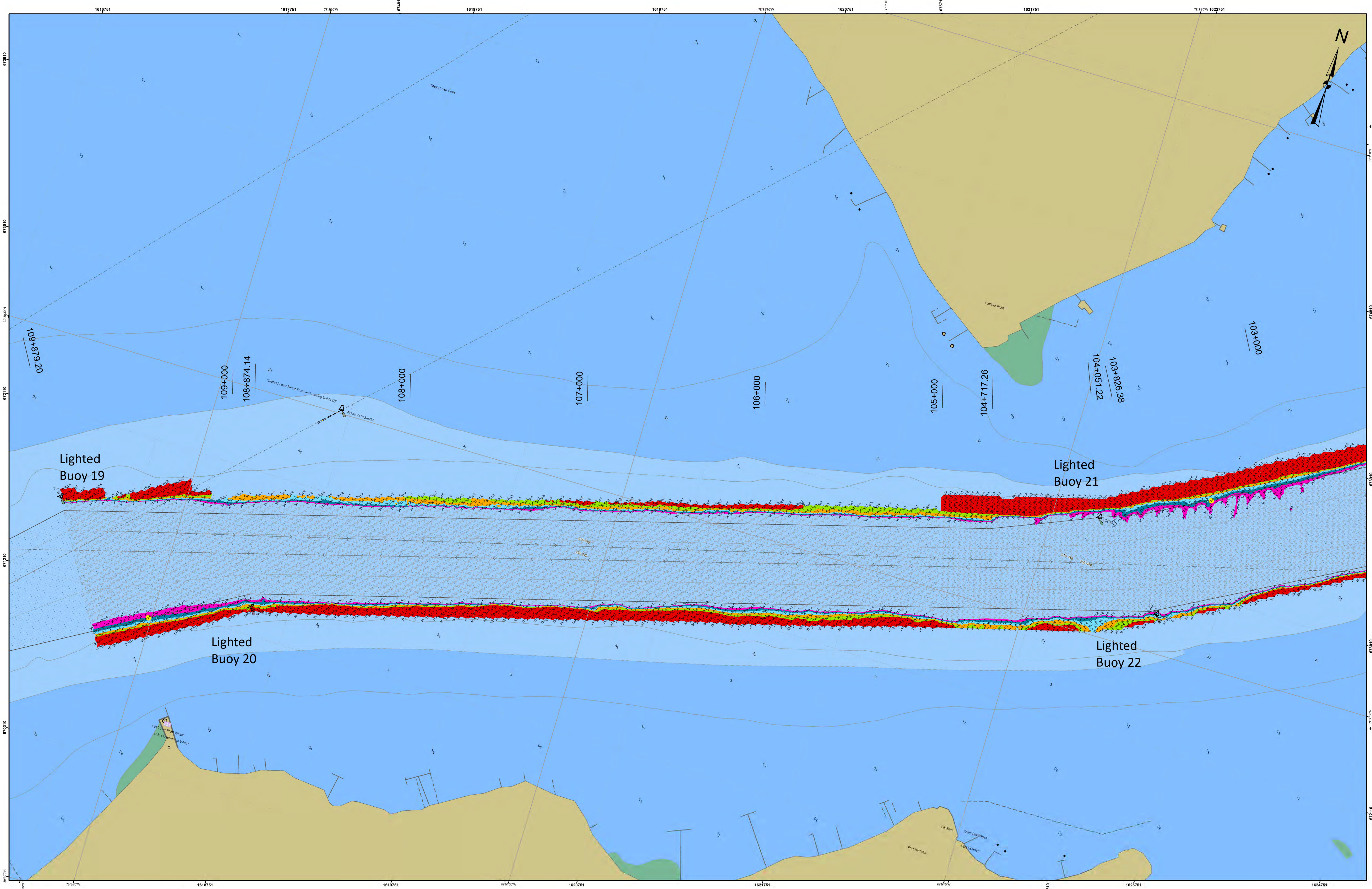
5. SOUNDINGS WERE SELECTED FOR PLOTTING PURPOSES ONLY, USING THE MINIMUM DEPTH WITHIN A 30'X30' CELL SHIFTED TO THE CELL CENTER.
6. CONTOURS DEPICT ACTUAL LOCATION OF BATHYMETRY AND DO NOT NECESSARILY REFLECT PLOTTED SOUNDING LOCATIONS.
7. CONTOURS WERE GENERATED USING THE MINIMUM DEPTH WITHIN A 15'X15' CELL.
8. HYPACK, INC. SOFTWARE WAS USED TO PERFORM THE SOUNDING SELECTION AND CONTOUR GENERATION.
9. THE INFORMATION DEPICTED ON THIS MAP REPRESENT THE RESULTS OF SURVEYS MADE ON THE DATES INDICATED AND CAN ONLY BE CONSIDERED AS INDICATING THE GENERAL CONDITIONS EXISTING AT THAT TIME.

10. THE POSITIONS OF THE AIDS TO NAVIGATION ARE PROVIDED FOR INFORMATION ONLY, AND SHOULD NOT BE USED FOR NAVIGATION.
11. THE LIMITS OF THE FEDERAL CHANNEL DEPICT THE MOST CURRENT CHANNEL FRAMEWORK AVAILABLE WHICH CAN ALSO BE DOWNLOADED HERE:
<http://navigation.usace.army.mil/Survey/Framework>



- Shoalest Soundings per Quarter
- CenterLine
- ToeLine
- QuarterLine
- StationLine
- 35 - 47.24
- 34 - 35
- 33 - 34
- 32 - 33
- 31 - 32
- 30 - 31
- 14.07 - 30

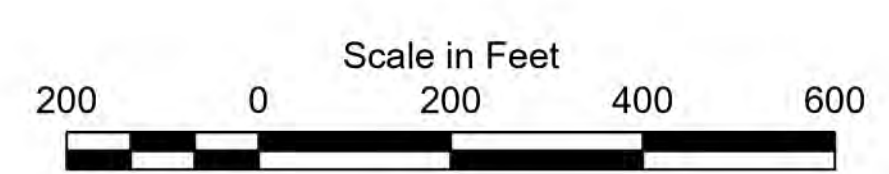
12. BASE MAPPING LINEWORK OR ORTHOPHOTOGRAPHY HAS BEEN COMPILED FROM A VARIETY OF SOURCES AND DATES AND IS INTENDED TO PORTRAY GENERAL CHARACTERISTIC OF THE SHORELINE AND OTHER FEATURES. TEMPORAL CHANGES MAY HAVE OCCURRED SINCE THIS DATA SET WAS COLLECTED AND SOME PARTS OF THE DATA MAY NO LONGER BE AN ACCURATE REPRESENTATION OF THE SURFACE CONDITIONS.



1. THIS SURVEY MEETS STANDARDS AS OUTLINED IN CORPS OF ENGINEERS' HYDROGRAPHIC SURVEY MANUAL EM1110-2-1003, DATED NOVEMBER 30, 2013 FOR NAVIGATION AND DREDGING SUPPORT SURVEYS.
2. HORIZONTAL REFERENCE - NAD 83, MARYLAND STATE PLANE, ZONE 1900, U.S. FOOT.
3. VERTICAL REFERENCE - MEAN LOWER LOW WATER, WHICH IS BELOW N.A.V.D. 88 BY THE FOLLOWING:
 1.35' FROM STA. 99+000 TO STA. 101+078.77
 1.28' FROM STA. 101+078.77 TO STA. 109+879.2
 1.22' FROM STA. 109+879.2 TO STA. 113+000
4. GEOID 12B AND NOAA TIDAL EPOCH: 1983 - 2001 WERE USED. SOUNDINGS ARE EXPRESSED IN FEET AND TENTHS AND REFER TO MEAN LOWER LOW WATER.

5. SOUNDINGS WERE SELECTED FOR PLOTTING PURPOSES ONLY, USING THE MINIMUM DEPTH WITHIN A 30'X30' CELL SHIFTED TO THE CELL CENTER.
6. CONTOURS DEPICT ACTUAL LOCATION OF BATHYMETRY AND DO NOT NECESSARILY REFLECT PLOTTED SOUNDING LOCATIONS.
7. CONTOURS WERE GENERATED USING THE MINIMUM DEPTH WITHIN A 15'X15' CELL.
8. HYPACK, INC. SOFTWARE WAS USED TO PERFORM THE SOUNDING SELECTION AND CONTOUR GENERATION.
9. THE INFORMATION DEPICTED ON THIS MAP REPRESENT THE RESULTS OF SURVEYS MADE ON THE DATES INDICATED AND CAN ONLY BE CONSIDERED AS INDICATING THE GENERAL CONDITIONS EXISTING AT THAT TIME.

10. THE POSITIONS OF THE AIDS TO NAVIGATION ARE PROVIDED FOR INFORMATION ONLY, AND SHOULD NOT BE USED FOR NAVIGATION.
11. THE LIMITS OF THE FEDERAL CHANNEL DEPICT THE MOST CURRENT CHANNEL FRAMEWORK AVAILABLE WHICH CAN ALSO BE DOWNLOADED HERE:
<http://navigation.usace.army.mil/Survey/Framework>
12. BASE MAPPING LINEWORK OR ORTHOPHOTOGRAPHY HAS BEEN COMPILED FROM A VARIETY OF SOURCES AND DATES AND IS INTENDED TO PORTRAY GENERAL CHARACTERISTIC SOF THE SHORELINE AND OTHER FEATURES. TEMPORAL CHANGES MAY HAVE OCCURRED SINCE THIS DATA SET WAS COLLECTED AND SOME PARTS OF THE DATA MAY NO LONGER BE AN ACCURATE REPRESENTATION OF THE SURFACE CONDITIONS.



- Shoalest Soundings per Quarter
- CenterLine
- ToeLine
- QuarterLine
- StationLine
- 35 - 47.24
- 34 - 35
- 33 - 34
- 32 - 33
- 31 - 32
- 30 - 31
- 14.07 - 30



STA. 99+000 TO STA. 106+000 -- 12 FEB 25
 STA. 105+000 TO STA. 109+879 -- 18 FEB 25

DISCLAIMER: The materials are provided "as is." The government does not warrant the accuracy, reliability, or completeness of the data. The government is not responsible for any errors or omissions in the data. The government is not responsible for any damages or losses resulting from the use of the data. The government is not responsible for any third-party claims or actions against the government or its employees. The government is not responsible for any claims or actions against the government or its employees resulting from the use of the data. The government is not responsible for any claims or actions against the government or its employees resulting from the use of the data.

Drawn By:	Surveyed By:
Checked By:	PHILADELPHIA DISTRICT
Approved:	Checked By:
	E. Anthony
	Chief Survey Section

Chesapeake Bay Approach Channel
Bull Minnow Point to Old Town Point Wharf
 Examination
 STA. 99+000 TO STA. 113+000

E-CD-130