

STA. 109+879 TO STA. 116+000 - 18 FEB 25
 STA. 116+000 TO STA. 126+000 - 19 FEB 25
 STA. 126+000 TO STA. 136+000 - 21 FEB 25
 STA. 136+000 TO STA. 143+000 - 27 FEB 25

DISCLAIMER
 This material is provided as is. The government makes no warranty, express or implied, about the quality, accuracy, or reliability of the information. The government is not responsible for any errors or omissions in this material. The government is not responsible for any damage or loss resulting from the use of this material. The government is not responsible for any delay in the completion of this data provided. The government is not responsible for any damage or loss resulting from the use of this data by others and the government shall not be liable for any such damage or loss. The government is not responsible for any damage or loss resulting from the use of this data by others and the government shall not be liable for any such damage or loss.

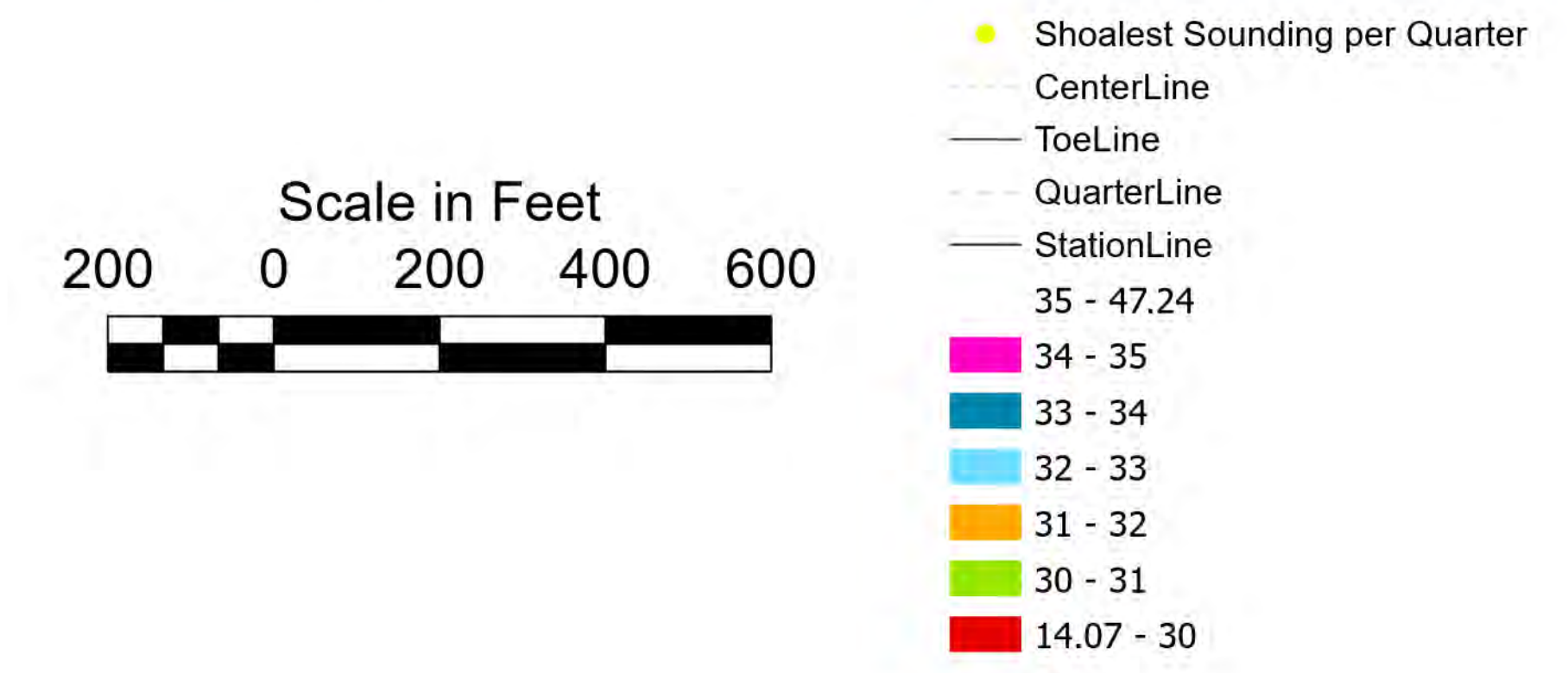
U.S. ARMY CORPS OF ENGINEERS
 PHILADELPHIA DISTRICT
 Surveyed By: _____
 Drawn By: _____
 Checked By: E. Anthony
 Plotted By: _____
 Approved: _____
 Chief Survey Section



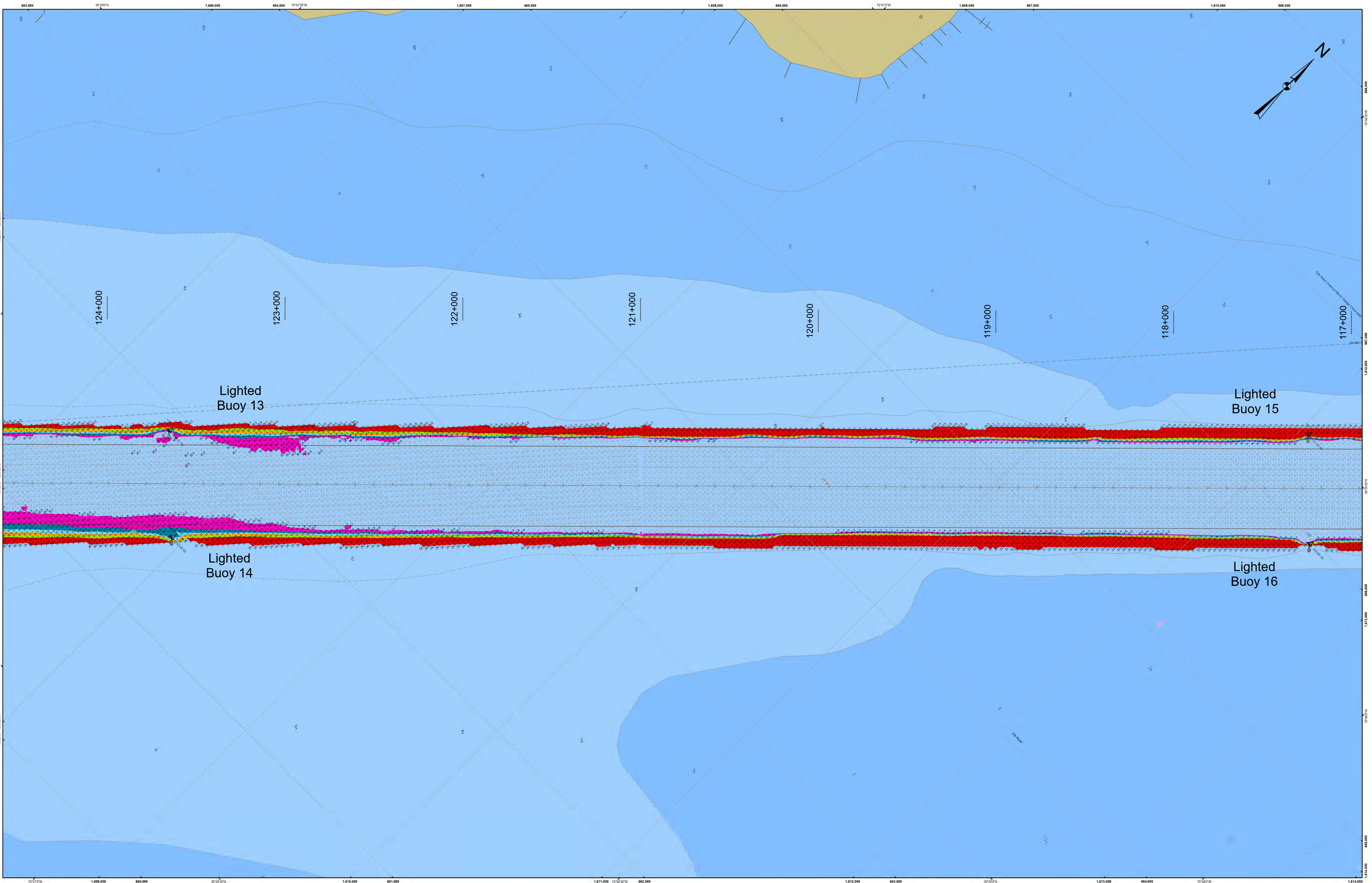
1. THIS SURVEY MEETS STANDARDS AS OUTLINED IN CORPS OF ENGINEERS' HYDROGRAPHIC SURVEY MANUAL EM1110-2-1003, DATED NOVEMBER 30, 2013 FOR NAVIGATION AND DREDGING SUPPORT SURVEYS.
2. HORIZONTAL REFERENCE - NAD 83, MARYLAND STATE PLANE, ZONE 1900, U.S. FOOT.
3. VERTICAL REFERENCE - MEAN LOWER LOW WATER, WHICH IS BELOW N.A.V.D. 88 BY THE FOLLOWING:
 1.10' FROM STA. 130+234.66 TO STA. 141+000
 1.22' FROM STA. 113+000 TO STA. 130+234.66
4. GEOID 12B AND NOAA TIDAL EPOCH: 1983 - 2001 WERE USED. SOUNDINGS ARE EXPRESSED IN FEET AND TENTHS AND REFER TO MEAN LOWER LOW WATER.

5. SOUNDINGS WERE SELECTED FOR PLOTTING PURPOSES ONLY, USING THE MINIMUM DEPTH WITHIN A 30'X30' CELL SHIFTED TO THE CELL CENTER.
6. CONTOURS DEPICT ACTUAL LOCATION OF BATHYMETRY AND DO NOT NECESSARILY REFLECT PLOTTED SOUNDING LOCATIONS.
7. CONTOURS WERE GENERATED USING THE MINIMUM DEPTH WITHIN A 15'X15' CELL.
8. HYPACK, INC. SOFTWARE WAS USED TO PERFORM THE SOUNDING SELECTION AND CONTOUR GENERATION.
9. THE INFORMATION DEPICTED ON THIS MAP REPRESENT THE RESULTS OF SURVEYS MADE ON THE DATES INDICATED AND CAN ONLY BE CONSIDERED AS INDICATING THE GENERAL CONDITIONS EXISTING AT THAT TIME.

10. THE POSITIONS OF THE AIDS TO NAVIGATION ARE PROVIDED FOR INFORMATION ONLY, AND SHOULD NOT BE USED FOR NAVIGATION.
11. THE LIMITS OF THE FEDERAL CHANNEL DEPICT THE MOST CURRENT CHANNEL FRAMEWORK AVAILABLE WHICH CAN ALSO BE DOWNLOADED HERE:
<http://navigation.usace.army.mil/SurveyFramework>
12. BASE MAPPING LINEWORK OR ORTHOPHOTOGRAPHY HAS BEEN COMPILED FROM A VARIETY OF SOURCES AND DATES AND IS INTENDED TO PORTRAY GENERAL CHARACTERISTICS OF THE SHORELINE AND OTHER FEATURES. TEMPORAL CHANGES MAY HAVE OCCURRED SINCE THIS DATA SET WAS COLLECTED AND SOME PARTS OF THE DATA MAY NO LONGER BE AN ACCURATE REPRESENTATION OF THE SURFACE CONDITIONS.



Chesapeake Bay Approach Channel
Old Town Point Wharf to Turkey Point
Examination
STA. 109+879 TO STA. 143+000



STA. 109+879 to STA. 116+000 - 18 FEB 25
 STA. 116+000 to STA. 126+000 - 19 FEB 25
 STA. 126+000 to STA. 136+000 - 21 FEB 25
 STA. 136+000 to STA. 143+000 - 27 FEB 25

DISCLAIMER: This information was prepared by the government of the United States of America and is not to be distributed, copied, or reproduced in any form or by any means, electronic or mechanical, including photocopying, recording, or by any information storage and retrieval system, without the express written permission of the U.S. Army Corps of Engineers. The government makes no warranty, representation, or assurance as to the accuracy, completeness, or timeliness of the data provided. The user of this information shall be responsible for its use and for any liability resulting from its use. The government shall not be liable for any damages, including consequential, arising from the use of this information.

Surveyed By:	Checked By:	Drawn By:	Plotted By:
	E. Anthony		
Drawing No.	Sheet Scale:	Approved:	Chief Survey Section

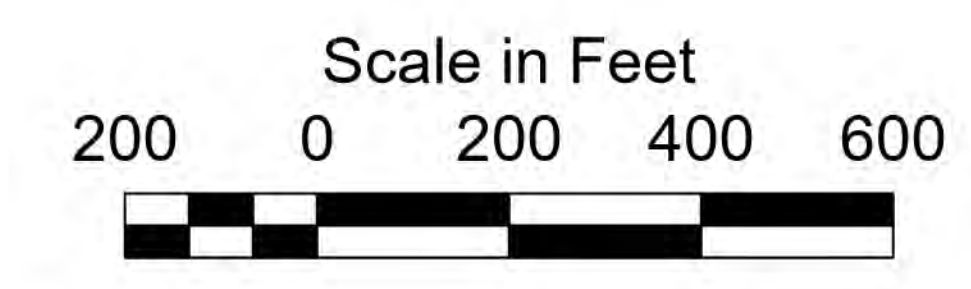
Chesapeake Bay Approach Channel
Old Town Point Wharf to Turkey Point
Examination
STA. 109+879 TO STA. 143+000



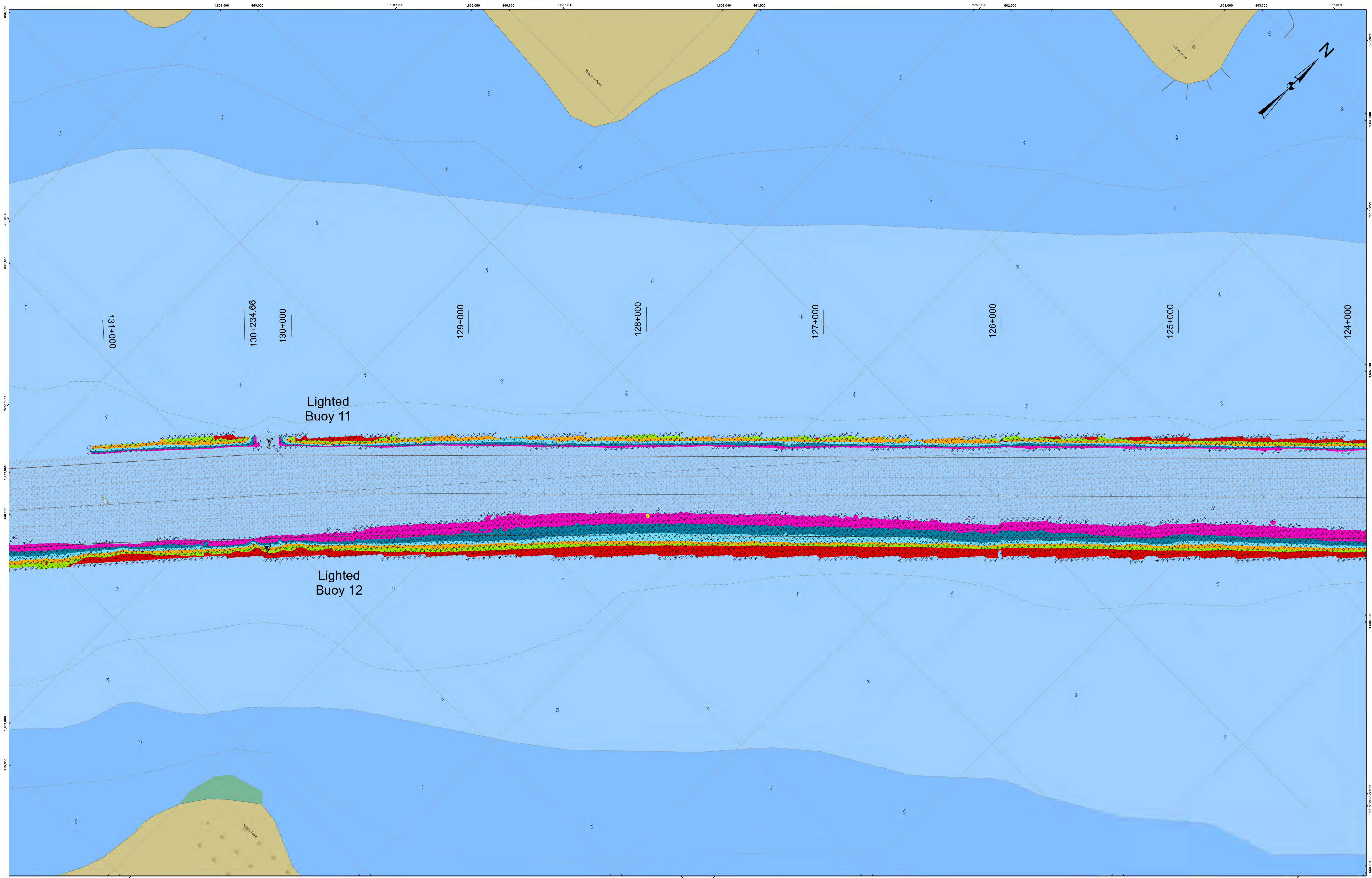
1. THIS SURVEY MEETS STANDARDS AS OUTLINED IN CORPS OF ENGINEERS' HYDROGRAPHIC SURVEY MANUAL EM1110-2-1003, DATED NOVEMBER 30, 2013 FOR NAVIGATION AND DREDGING SUPPORT SURVEYS.
2. HORIZONTAL REFERENCE - NAD 83, MARYLAND STATE PLANE, ZONE 1900, U.S. FOOT.
3. VERTICAL REFERENCE - MEAN LOWER LOW WATER, WHICH IS BELOW N.A.V.D. 88 BY THE FOLLOWING:
 1.10' FROM STA. 130+234.66 to STA. 141+000
 1.22' FROM STA. 113+000 to STA. 130+234.66
4. GEOID 12B AND NOAA TIDAL EPOCH: 1983 - 2001 WERE USED. SOUNDINGS ARE EXPRESSED IN FEET AND TENTHS AND REFER TO MEAN LOWER LOW WATER.

5. SOUNDINGS WERE SELECTED FOR PLOTTING PURPOSES ONLY, USING THE MINIMUM DEPTH WITHIN A 30'X30' CELL SHIFTED TO THE CELL CENTER.
6. CONTOURS DEPICT ACTUAL LOCATION OF BATHYMETRY AND DO NOT NECESSARILY REFLECT PLOTTED SOUNDING LOCATIONS.
7. CONTOURS WERE GENERATED USING THE MINIMUM DEPTH WITHIN A 15'X15' CELL.
8. HYPACK, INC. SOFTWARE WAS USED TO PERFORM THE SOUNDING SELECTION AND CONTOUR GENERATION.
9. THE INFORMATION DEPICTED ON THIS MAP REPRESENT THE RESULTS OF SURVEYS MADE ON THE DATES INDICATED AND CAN ONLY BE CONSIDERED AS INDICATING THE GENERAL CONDITIONS EXISTING AT THAT TIME.

10. THE POSITIONS OF THE AIDS TO NAVIGATION ARE PROVIDED FOR INFORMATION ONLY, AND SHOULD NOT BE USED FOR NAVIGATION.
11. THE LIMITS OF THE FEDERAL CHANNEL DEPICT THE MOST CURRENT CHANNEL FRAMEWORK AVAILABLE WHICH CAN ALSO BE DOWNLOADED HERE:
<http://navigation.usace.army.mil/SurveyFramework>
12. BASE MAPPING LINEWORK OR ORTHOPHOTOGRAPHY HAS BEEN COMPILED FROM A VARIETY OF SOURCES AND DATES AND IS INTENDED TO PORTRAY GENERAL CHARACTERISTICS OF THE SHORELINE AND OTHER FEATURES. TEMPORAL CHANGES MAY HAVE OCCURRED SINCE THIS DATA SET WAS COLLECTED AND SOME PARTS OF THE DATA MAY NO LONGER BE AN ACCURATE REPRESENTATION OF THE SURFACE CONDITIONS.



- Shoalest Sounding per Quarter
- CenterLine
- ToeLine
- QuarterLine
- StationLine
- 35 - 47.24
- 34 - 35
- 33 - 34
- 32 - 33
- 31 - 32
- 30 - 31
- 14.07 - 30



STA. 109+879 to STA. 116+000 - 18 FEB 25
 STA. 116+000 to STA. 126+000 - 19 FEB 25
 STA. 126+000 to STA. 136+000 - 21 FEB 25
 STA. 136+000 to STA. 143+000 - 27 FEB 25

DISCLAIMER
 This material was prepared by or for the government and is not to be used for any purpose other than that for which it was prepared. The government makes no warranty, expressed or implied, and assumes no liability for the accuracy, completeness, or timeliness of the data provided. The user of this data for any purpose other than that for which it was prepared is doing so at their own risk. The government shall not be held liable for any damages, including consequential, arising from the use of this data.

U.S. ARMY CORPS OF ENGINEERS PHILADELPHIA DISTRICT
 Surveyed By: _____
 Drawn By: _____
 Checked By: E. Anthony
 Plotted By: _____
 Approved: _____
 Chief Survey Section

Chesapeake Bay Approach Channel
Old Town Point Wharf to Turkey Point
Examination
STA. 109+879 TO STA. 143+000

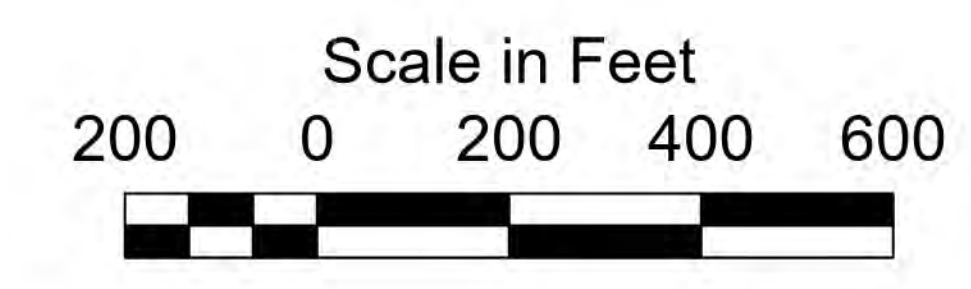
E-CD-131



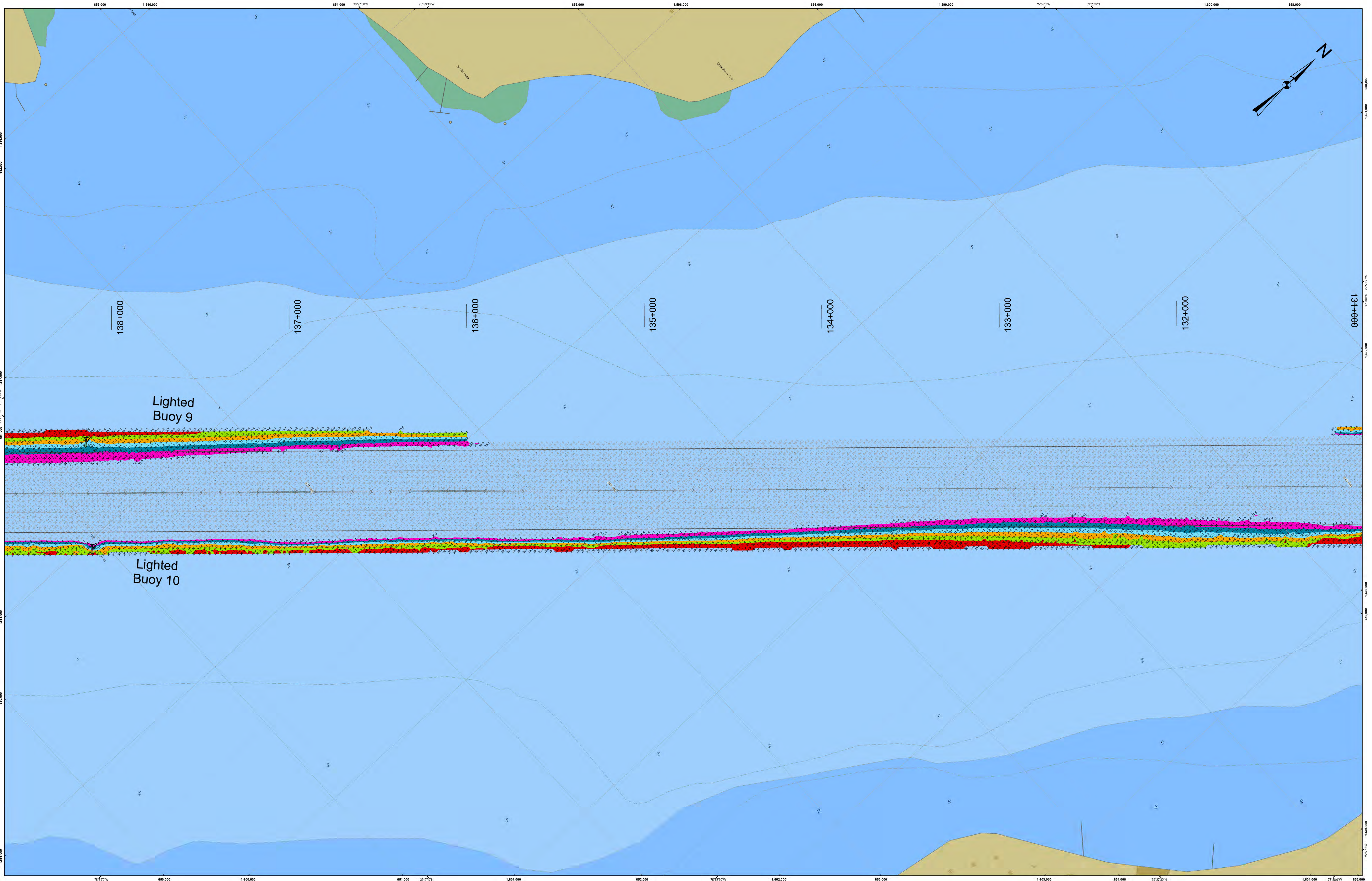
1. THIS SURVEY MEETS STANDARDS AS OUTLINED IN CORPS OF ENGINEERS' HYDROGRAPHIC SURVEY MANUAL EM1110-2-1003, DATED NOVEMBER 30, 2013 FOR NAVIGATION AND DREDGING SUPPORT SURVEYS.
2. HORIZONTAL REFERENCE - NAD 83, MARYLAND STATE PLANE, ZONE 1900, U.S. FOOT.
3. VERTICAL REFERENCE - MEAN LOWER LOW WATER, WHICH IS BELOW N.A.V.D. 88 BY THE FOLLOWING:
 1.10' FROM STA. 130+234.66 to STA. 141+000
 1.22' FROM STA. 113+000 to STA. 130+234.66
4. GEOID 12B AND NOAA TIDAL EPOCH: 1983 - 2001 WERE USED. SOUNDINGS ARE EXPRESSED IN FEET AND TENTHS AND REFER TO MEAN LOWER LOW WATER.

5. SOUNDINGS WERE SELECTED FOR PLOTTING PURPOSES ONLY, USING THE MINIMUM DEPTH WITHIN A 30'X30' CELL SHIFTED TO THE CELL CENTER.
6. CONTOURS DEPICT ACTUAL LOCATION OF BATHYMETRY AND DO NOT NECESSARILY REFLECT PLOTTED SOUNDING LOCATIONS.
7. CONTOURS WERE GENERATED USING THE MINIMUM DEPTH WITHIN A 15'X15' CELL.
8. HYPACK, INC. SOFTWARE WAS USED TO PERFORM THE SOUNDING SELECTION AND CONTOUR GENERATION.
9. THE INFORMATION DEPICTED ON THIS MAP REPRESENT THE RESULTS OF SURVEYS MADE ON THE DATES INDICATED AND CAN ONLY BE CONSIDERED AS INDICATING THE GENERAL CONDITIONS EXISTING AT THAT TIME.

10. THE POSITIONS OF THE AIDS TO NAVIGATION ARE PROVIDED FOR INFORMATION ONLY, AND SHOULD NOT BE USED FOR NAVIGATION.
11. THE LIMITS OF THE FEDERAL CHANNEL DEPICT THE MOST CURRENT CHANNEL FRAMEWORK AVAILABLE WHICH CAN ALSO BE DOWNLOADED HERE:
<http://navigation.usace.army.mil/SurveyFramework>
12. BASE MAPPING LINEWORK OR ORTHOPHOTOGRAPHY HAS BEEN COMPILED FROM A VARIETY OF SOURCES AND DATES AND IS INTENDED TO PORTRAY GENERAL CHARACTERISTICS OF THE SHORELINE AND OTHER FEATURES. TEMPORAL CHANGES MAY HAVE OCCURRED SINCE THIS DATA SET WAS COLLECTED AND SOME PARTS OF THE DATA MAY NO LONGER BE AN ACCURATE REPRESENTATION OF THE SURFACE CONDITIONS.



- Shoalest Sounding per Quarter
- CenterLine
- ToeLine
- QuarterLine
- StationLine
- 35 - 47.24
- 34 - 35
- 33 - 34
- 32 - 33
- 31 - 32
- 30 - 31
- 14.07 - 30



STA. 109+879 to STA. 116+000 - 18 FEB 25
 STA. 116+000 to STA. 126+000 - 19 FEB 25
 STA. 126+000 to STA. 136+000 - 21 FEB 25
 STA. 136+000 to STA. 143+000 - 27 FEB 25

DISCLAIMER
 This material is provided as is. The government does not warrant the accuracy, reliability, or completeness of the data provided. The government makes no representation as to the truth, accuracy, or completeness of the data provided. The government is not responsible for any errors or omissions in this material. The government is not responsible for any damage or loss resulting from the use of this material. The government is not responsible for any third-party claims or actions against the government or its employees, contractors, or suppliers arising from the use of this material. The government is not responsible for any delay in the delivery of this material. The government is not responsible for any loss of data or information. The government is not responsible for any unauthorized use or disclosure of this material. The government is not responsible for any infringement of intellectual property rights. The government is not responsible for any violation of applicable laws or regulations. The government is not responsible for any other consequences of the use of this material.

U.S. ARMY CORPS OF ENGINEERS
 PHILADELPHIA DISTRICT

Surveyed By:	
Drawn By:	E. Anthony
Field Scale:	
Approved:	

Chief Survey Section

Chesapeake Bay Approach Channel
Old Town Point Wharf to Turkey Point Examination
STA. 109+879 TO STA. 143+000

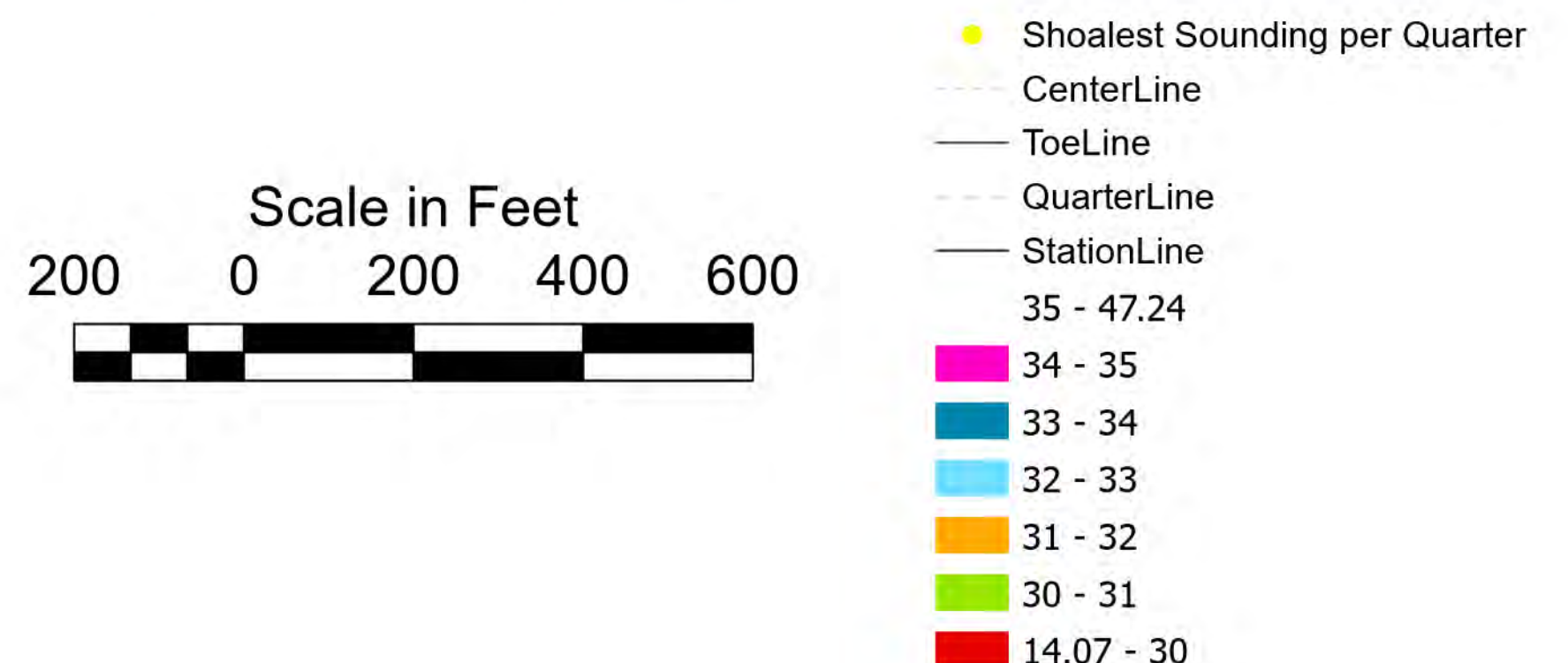
E-CD-131

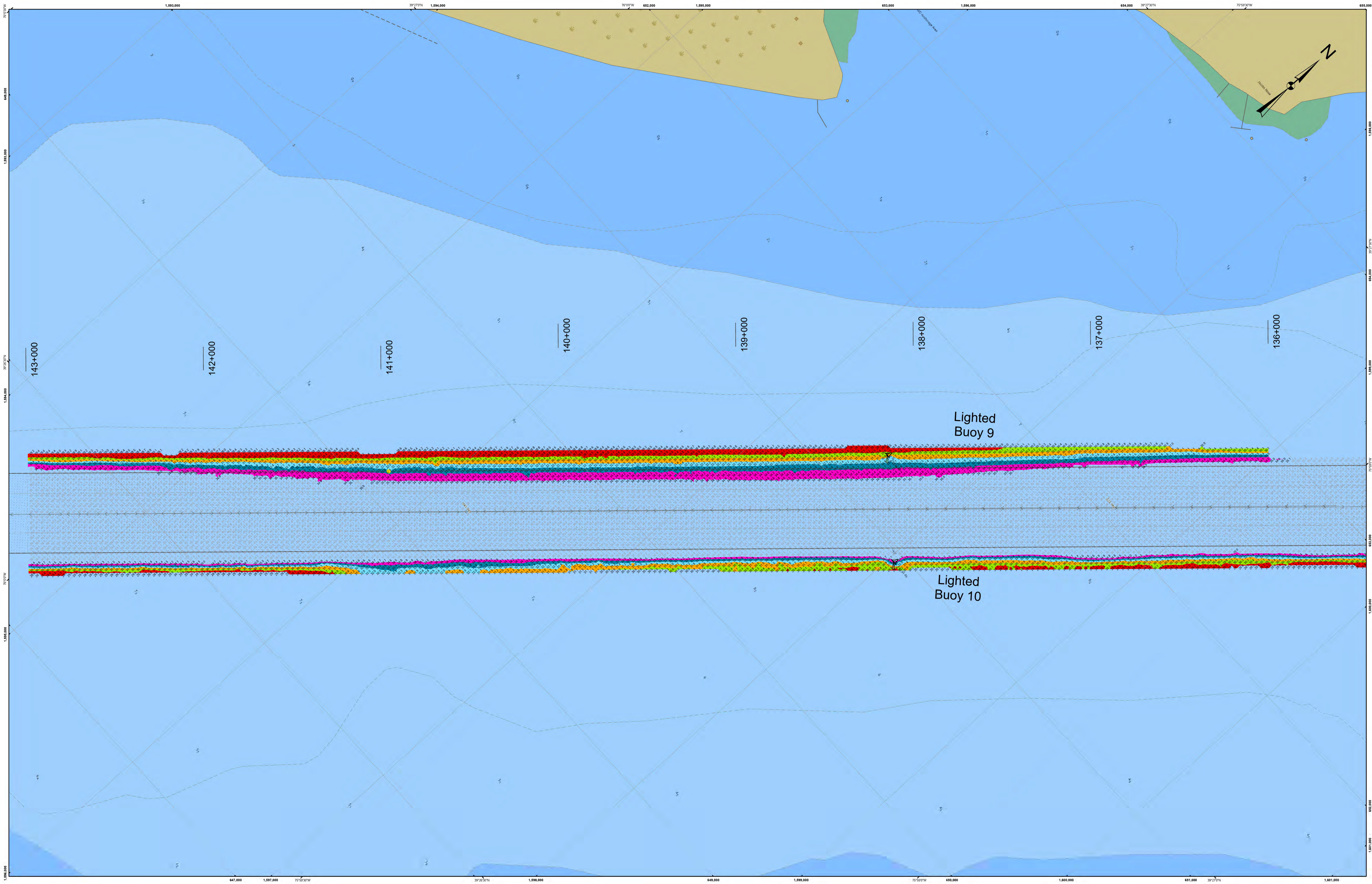


1. THIS SURVEY MEETS STANDARDS AS OUTLINED IN CORPS OF ENGINEERS' HYDROGRAPHIC SURVEY MANUAL EM1110-2-1003, DATED NOVEMBER 30, 2013 FOR NAVIGATION AND DREDGING SUPPORT SURVEYS.
2. HORIZONTAL REFERENCE - NAD 83, MARYLAND STATE PLANE, ZONE 1900, U.S. FOOT.
3. VERTICAL REFERENCE - MEAN LOWER LOW WATER, WHICH IS BELOW N.A.V.D. 88 BY THE FOLLOWING:
 1.10' FROM STA. 130+234.66 to STA. 141+000
 1.22' FROM STA. 113+000 to STA. 130+234.66
4. GEOID 12B AND NOAA TIDAL EPOCH: 1983 - 2001 WERE USED. SOUNDINGS ARE EXPRESSED IN FEET AND TENTHS AND REFER TO MEAN LOWER LOW WATER.

5. SOUNDINGS WERE SELECTED FOR PLOTTING PURPOSES ONLY, USING THE MINIMUM DEPTH WITHIN A 30'X30' CELL SHIFTED TO THE CELL CENTER.
6. CONTOURS DEPICT ACTUAL LOCATION OF BATHYMETRY AND DO NOT NECESSARILY REFLECT PLOTTED SOUNDING LOCATIONS.
7. CONTOURS WERE GENERATED USING THE MINIMUM DEPTH WITHIN A 15'X15' CELL.
8. HYPACK, INC. SOFTWARE WAS USED TO PERFORM THE SOUNDING SELECTION AND CONTOUR GENERATION.
9. THE INFORMATION DEPICTED ON THIS MAP REPRESENT THE RESULTS OF SURVEYS MADE ON THE DATES INDICATED AND CAN ONLY BE CONSIDERED AS INDICATING THE GENERAL CONDITIONS EXISTING AT THAT TIME.

10. THE POSITIONS OF THE AIDS TO NAVIGATION ARE PROVIDED FOR INFORMATION ONLY, AND SHOULD NOT BE USED FOR NAVIGATION.
11. THE LIMITS OF THE FEDERAL CHANNEL DEPICT THE MOST CURRENT CHANNEL FRAMEWORK AVAILABLE WHICH CAN ALSO BE DOWNLOADED HERE:
<http://navigation.usace.army.mil/SurveyFramework>
12. BASE MAPPING LINEWORK OR ORTHOPHOTOGRAPHY HAS BEEN COMPILED FROM A VARIETY OF SOURCES AND DATES AND IS INTENDED TO PORTRAY GENERAL CHARACTERISTICS OF THE SHORELINE AND OTHER FEATURES. TEMPORAL CHANGES MAY HAVE OCCURRED SINCE THIS DATA SET WAS COLLECTED AND SOME PARTS OF THE DATA MAY NO LONGER BE AN ACCURATE REPRESENTATION OF THE SURFACE CONDITIONS.





STA. 109+879 to STA. 116+000 - 18 FEB 25
 STA. 116+000 to STA. 126+000 - 19 FEB 25
 STA. 126+000 to STA. 136+000 - 21 FEB 25
 STA. 136+000 to STA. 143+000 - 27 FEB 25

DISCLAIMER
 This material is provided as is. The government makes no warranty, express or implied, about the accuracy, reliability, or completeness of the data provided. The government is not liable for any damages, including consequential or indirect damages, arising from the use of this information. The government is not liable for any damages, including consequential or indirect damages, arising from the use of this information. The government is not liable for any damages, including consequential or indirect damages, arising from the use of this information.

U.S. ARMY CORPS OF ENGINEERS
 PHILADELPHIA DISTRICT

Surveyed By: _____
 Traced By: E. Anthony
 Plotted By: _____
 Approved: _____
 Chief Survey Section

Chesapeake Bay Approach Channel
 Old Town Point Wharf to Turkey Point
 Examination
 STA. 109+879 TO STA. 143+000

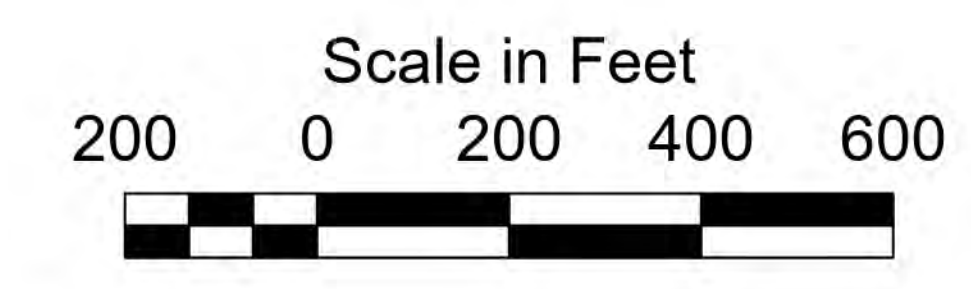
E-CD-131



1. THIS SURVEY MEETS STANDARDS AS OUTLINED IN CORPS OF ENGINEERS' HYDROGRAPHIC SURVEY MANUAL EM1110-2-1003, DATED NOVEMBER 30, 2013 FOR NAVIGATION AND DREDGING SUPPORT SURVEYS.
2. HORIZONTAL REFERENCE - NAD 83, MARYLAND STATE PLANE, ZONE 1900, U.S. FOOT.
3. VERTICAL REFERENCE - MEAN LOWER LOW WATER, WHICH IS BELOW N.A.V.D. 88 BY THE FOLLOWING:
 1.10' FROM STA. 130+234.66 TO STA. 141+000
 1.22' FROM STA. 113+000 TO STA. 130+234.66
4. GEOID 12B AND NOAA TIDAL EPOCH: 1983 - 2001 WERE USED. SOUNDINGS ARE EXPRESSED IN FEET AND TENTHS AND REFER TO MEAN LOWER LOW WATER.

5. SOUNDINGS WERE SELECTED FOR PLOTTING PURPOSES ONLY, USING THE MINIMUM DEPTH WITHIN A 30'X30' CELL SHIFTED TO THE CELL CENTER.
6. CONTOURS DEPICT ACTUAL LOCATION OF BATHYMETRY AND DO NOT NECESSARILY REFLECT PLOTTED SOUNDING LOCATIONS.
7. CONTOURS WERE GENERATED USING THE MINIMUM DEPTH WITHIN A 15'X15' CELL.
8. HYPACK, INC. SOFTWARE WAS USED TO PERFORM THE SOUNDING SELECTION AND CONTOUR GENERATION.
9. THE INFORMATION DEPICTED ON THIS MAP REPRESENT THE RESULTS OF SURVEYS MADE ON THE DATES INDICATED AND CAN ONLY BE CONSIDERED AS INDICATING THE GENERAL CONDITIONS EXISTING AT THAT TIME.

10. THE POSITIONS OF THE AIDS TO NAVIGATION ARE PROVIDED FOR INFORMATION ONLY, AND SHOULD NOT BE USED FOR NAVIGATION.
11. THE LIMITS OF THE FEDERAL CHANNEL DEPICT THE MOST CURRENT CHANNEL FRAMEWORK AVAILABLE WHICH CAN ALSO BE DOWNLOADED HERE:
<http://navigation.usace.army.mil/SurveyFramework>
12. BASE MAPPING LINEWORK OR ORTHOPHOTOGRAPHY HAS BEEN COMPILED FROM A VARIETY OF SOURCES AND DATES AND IS INTENDED TO PORTRAY GENERAL CHARACTERISTICS OF THE SHORELINE AND OTHER FEATURES. TEMPORAL CHANGES MAY HAVE OCCURRED SINCE THIS DATA SET WAS COLLECTED AND SOME PARTS OF THE DATA MAY NO LONGER BE AN ACCURATE REPRESENTATION OF THE SURFACE CONDITIONS.



- Shoalest Sounding per Quarter
- CenterLine
- ToeLine
- QuarterLine
- StationLine
- 35 - 47.24
- 34 - 35
- 33 - 34
- 32 - 33
- 31 - 32
- 30 - 31
- 14.07 - 30