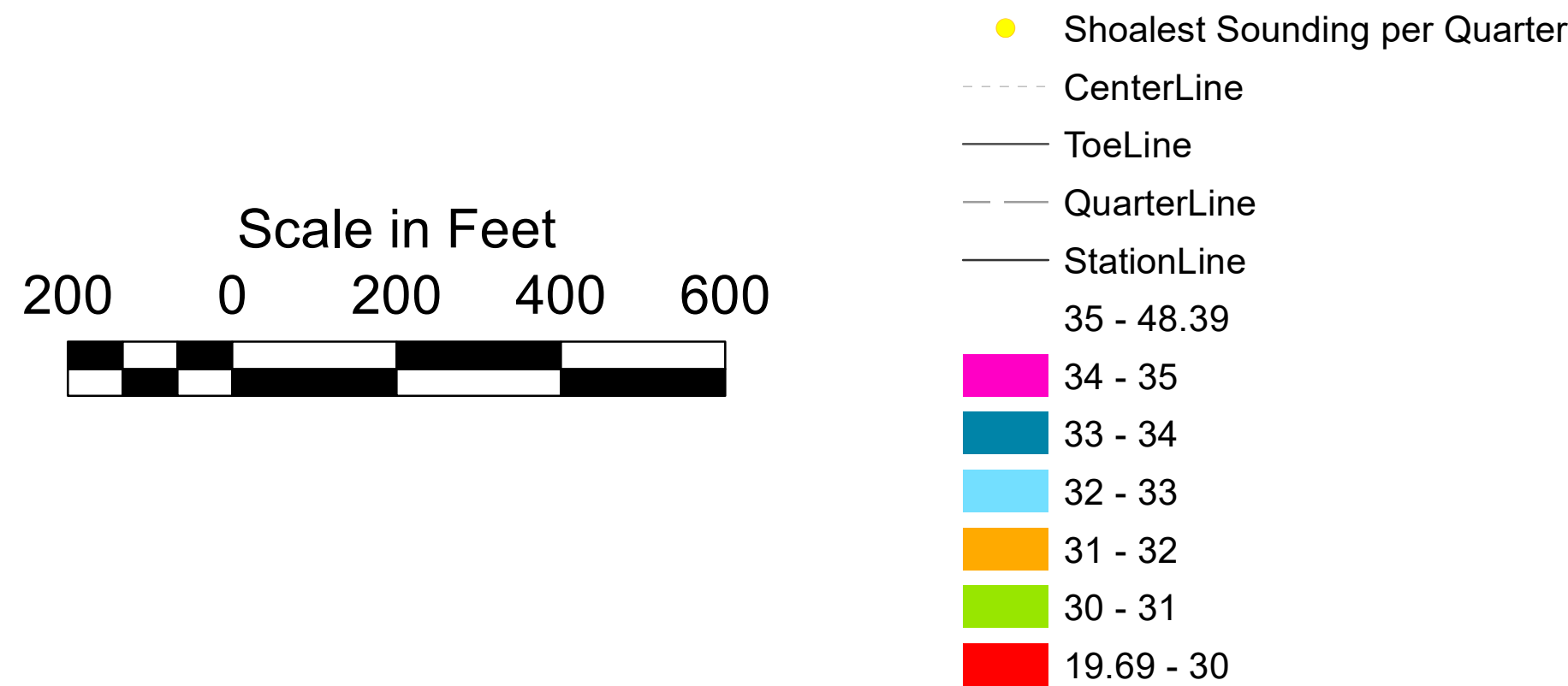


1. THIS SURVEY MEETS STANDARDS AS OUTLINED IN CORPS OF ENGINEERS' HYDROGRAPHIC SURVEY MANUAL EM1110-2-1003, DATED NOVEMBER 30, 2013 FOR NAVIGATION AND DREDGING SUPPORT SURVEYS.
2. HORIZONTAL REFERENCE - NAD 83, MARYLAND STATE PLANE, ZONE 1900, U.S. FOOT.
3. VERTICAL REFERENCE - MEAN LOWER LOW WATER, WHICH IS BELOW N.A.V.D. 88 BY THE FOLLOWING:  
0.99' from Sta. 211+000 to Sta. 220+496.49  
1.00' from Sta. 220+496.49 to Sta. 240+300.92  
1.01' from Sta. 240+300.92 to Sta 250+439.46
4. GEOID 12B AND NOAA TIDAL EPOCH: 1983 - 2001 WERE USED. SOUNDINGS ARE EXPRESSED IN FEET AND TENTHS AND REFER TO MEAN LOWER LOW WATER.

5. SOUNDINGS WERE SELECTED FOR PLOTTING PURPOSES ONLY, USING THE MINIMUM DEPTH WITHIN A 30'X30' CELL SHIFTED TO THE CELL CENTER.
6. CONTOURS DEPICT ACTUAL LOCATION OF BATHYMETRY AND DO NOT NECESSARILY REFLECT PLOTTED SOUNDING LOCATIONS.
7. CONTOURS WERE GENERATED USING THE MINIMUM DEPTH WITHIN A 3'X3' CELL.
8. HYPACK, INC. SOFTWARE WAS USED TO PERFORM THE SOUNDING SELECTION AND CONTOUR GENERATION.
9. THE INFORMATION DEPICTED ON THIS MAP REPRESENT THE RESULTS OF SURVEYS MADE ON THE DATES INDICATED AND CAN ONLY BE CONSIDERED AS INDICATING THE GENERAL CONDITIONS EXISTING AT THAT TIME.

10. THE POSITIONS OF THE AIDS TO NAVIGATION ARE PROVIDED FOR INFORMATION ONLY, AND SHOULD NOT BE USED FOR NAVIGATION.
11. THE LIMITS OF THE FEDERAL CHANNEL DEPICT THE MOST CURRENT CHANNEL FRAMEWORK AVAILABLE WHICH CAN ALSO BE DOWNLOADED HERE:  
<http://navigation.usace.army.mil/Survey/Framework>
12. BASE MAPPING LINEWORK OR ORTHOPHOTOGRAPHY HAS BEEN COMPILED FROM A VARIETY OF SOURCES AND DATES AND IS INTENDED TO PORTRAY GENERAL CHARACTERISTICS OF THE SHORELINE AND OTHER FEATURES. TEMPORAL CHANGES MAY HAVE OCCURRED SINCE THIS DATA SET WAS COLLECTED AND SOME PARTS OF THE DATA MAY NO LONGER BE AN ACCURATE REPRESENTATION OF THE SURFACE CONDITIONS.



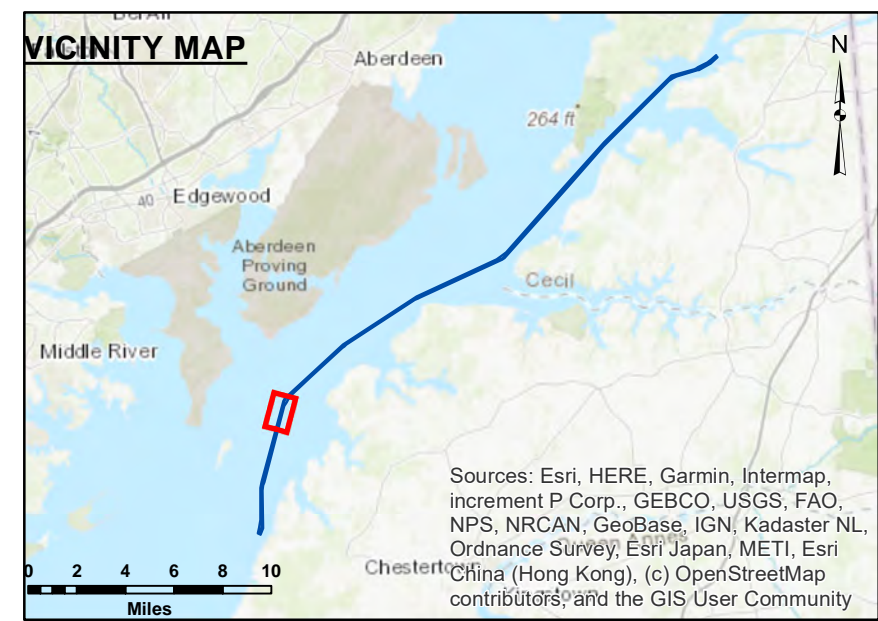
STA. 213+000 to STA. 223+000 -- 25 MAY 23  
STA. 223+000 to STA. 234+000 -- 09 MAY 23  
STA. 234+000 to STA. 245+000 -- 07 DEC 23  
STA. 245+000 to STA. 250+439 -- 06 DEC 23

This information is provided as a "best government" means no representation or warranty is made by the government. The information is provided for informational purposes only. It is not intended to be used for any purpose other than that for which it was provided. The government disclaims any liability for the use of the information for any purpose other than that for which it was provided.

U.S. ARMY CORPS OF ENGINEERS  
Philadelphia District  
Drawn By: \_\_\_\_\_  
Traced By: \_\_\_\_\_  
Plotted By: \_\_\_\_\_  
Approved: \_\_\_\_\_  
Chief, Survey Section

Chesapeake Bay Approach Channel  
Worton Point to  
South end of Pooles Island  
Examination  
STA. 213+000 TO STA. 250+439.46  
E-CD-111



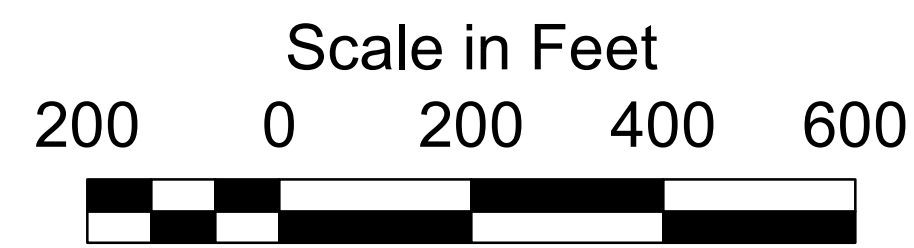


1. THIS SURVEY MEETS STANDARDS AS OUTLINED IN CORPS OF ENGINEERS' HYDROGRAPHIC SURVEY MANUAL EM1110-2-1003, DATED NOVEMBER 30, 2013 FOR NAVIGATION AND DREDGING SUPPORT SURVEYS
2. HORIZONTAL REFERENCE - NAD 83, MARYLAND STATE PLANE, ZONE 1900, U.S. FOOT.
3. VERTICAL REFERENCE - MEAN LOWER LOW WATER, WHICH IS BELOW N.A.V.D. 88 BY THE FOLLOWING:  
  
0.99' from Sta. 211+000 to Sta. 220+496.49  
1.00' from Sta. 220+496.49 to Sta. 240+300.92  
1.01' from Sta. 240+300.92 to Sta 250+439.46
4. GEOID 12B AND NOAA TIDAL EPOCH: 1983 - 2001 WERE USED. SOUNDINGS ARE EXPRESSED IN FEET AND TENTHS AND REFER TO MEAN LOWER LOW WATER.

5. SOUNDINGS WERE SELECTED FOR PLOTTING PURPOSES ONLY, USING THE MINIMUM DEPTH WITHIN A 30'X30' CELL SHIFTED TO THE CELL CENTER.
6. CONTOURS DEPICT ACTUAL LOCATION OF BATHYMETRY AND DO NOT NECESSARILY REFLECT PLOTTED SOUNDING LOCATIONS.
7. CONTOURS WERE GENERATED USING THE MINIMUM DEPTH WITHIN A 3'X3' CELL.
8. HYPACK, INC. SOFTWARE WAS USED TO PERFORM THE SOUNDING SELECTION AND CONTOUR GENERATION.
9. THE INFORMATION DEPICTED ON THIS MAP REPRESENT THE RESULTS OF SURVEY MADE ON THE DATES INDICATED AND CAN ONLY BE CONSIDERED AS INDICATING THE GENERAL CONDITIONS EXISTING AT THAT TIME.

10. THE POSITIONS OF THE AIDS TO NAVIGATION ARE PROVIDED FOR INFORMATION ONLY, AND SHOULD NOT BE USED FOR NAVIGATION.
11. THE LIMITS OF THE FEDERAL CHANNEL  
DEPICT THE MOST CURRENT CHANNEL  
FRAMEWORK AVAILABLE WHICH CAN ALSO BE DOWNLOADED HERE:  
<http://navigation.usace.army.mil/Survey/Framework>

12. BASE MAPPING LINWORK OR ORTHOPHOTOGRAPHY HAS BEEN COMPILED FROM A VARIETY OF SOURCES AND DATES AND IS INTENDED TO PORTRAY GENERAL CHARACTERISTICS OF THE SHORELINE AND OTHER FEATURES. TEMPORAL CHANGES MAY HAVE OCCURRED SINCE THIS DATA SET WAS COLLECTED AND SOME PARTS OF THE DATA MAY NO LONGER BE AN ACCURATE REPRESENTATION OF THE SURFACE CONDITIONS.



- Shoalest Sounding per Quarter  
 - - - CenterLine  
 — ToeLine  
 — QuarterLine  
 — StationLine  
 35 - 48.39  
 34 - 35  
 33 - 34  
 32 - 33  
 31 - 32  
 30 - 31  
 19.69 - 30



STA. 213+000 to STA. 223+000 -- 25 APR 23  
STA. 223+000 to STA. 234+000 -- 09 MAY 23  
STA. 234+000 to STA. 245+000 -- 07 DEC 23  
STA. 245+000 to STA. 250+439 -- 06 DEC 23

**Disclaimer:** This data is provided for general information only. The materials are provided "as is." The government makes no representations or warranties about the quality or suitability of the materials, but not limited to the implied warranties of merchantability or fitness for a particular purpose, or that the data is accurate and complete. The government makes no representations as to the truth, accuracy, or completeness of the data provided. The government disclaims any liability for the use of this data by others and the government shall not be liable for damages of any kind.

U.S. ARMY CORPS OF ENGINEERS

Philadelphia District

Surveyed By:

---

Drawing No.

Titled By:

---

Plot Scale

Plotted By:

---

Approved:

Chesapeake Bay Approach Channel  
Worton Point to  
South end of Pooles Island  
Examination  
STA: 213+000 TO STA. 250+439.46

**E-CD-111**

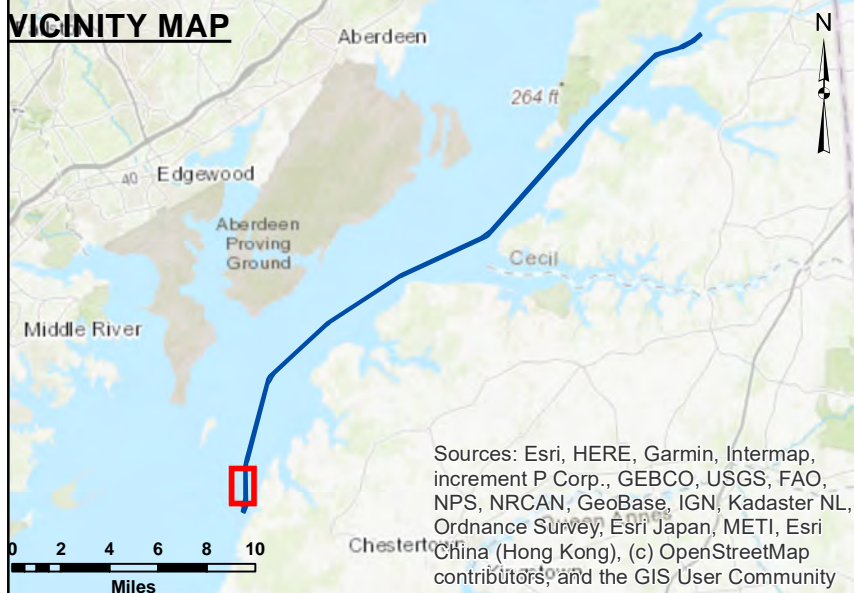










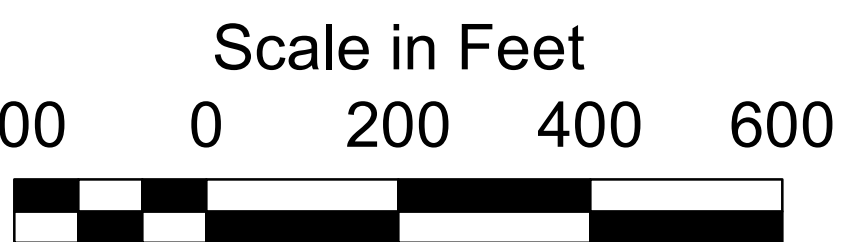


1. THIS SURVEY MEETS STANDARDS AS OUTLINED IN CORPS OF ENGINEERS' HYDROGRAPHIC SURVEY MANUAL EM1110-2-1003, DATED NOVEMBER 30, 2013 FOR NAVIGATION AND DREDGING SUPPORT SURVEYS
2. HORIZONTAL REFERENCE - NAD 83, MARYLAND STATE PLANE, ZONE 1900, U.S. FOOT.
3. VERTICAL REFERENCE - MEAN LOWER LOW WATER, WHICH IS BELOW N.A.D. 88 BY THE FOLLOWING:  
  

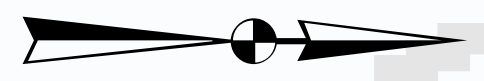
0.99'	from Sta. 211+000 to Sta. 220+496.49
1.00'	from Sta. 220+496.49 to Sta. 240+300.92
1.01'	from Sta. 240+300.92 to Sta 250+439.46
4. GEIOD 12B AND NOAA TIDAL EPOCH: 1983 - 2001 WERE USED. SOUNDINGS ARE EXPRESSED IN FEET AND TENTHS AND REFER TO MEAN LOWER LOW WATER.

5. SOUNDINGS WERE SELECTED FOR PLOTTING PURPOSES ONLY, USING THE MINIMUM DEPTH WITHIN A 30'X30' CELL SHIFTED TO THE CELL CENTER.
6. CONTOURS DEPICT ACTUAL LOCATION OF BATHYMETRY AND DO NOT NECESSARILY REFLECT PLOTTED SOUNDING LOCATIONS.
7. CONTOURS WERE GENERATED USING THE MINIMUM DEPTH WITHIN A 3'X3' CELL.
8. HYPACK, INC. SOFTWARE WAS USED TO PERFORM THE SOUNDING SELECTION AND CONTOUR GENERATION.
9. THE INFORMATION DEPICTED ON THIS MAP REPRESENT THE RESULTS OF SURVEYS MADE ON THE DATE(S) INDICATED AND CAN ONLY BE CONSIDERED AS INDICATING THE GENERAL CONDITIONS EXISTING AT THAT TIME.

10. THE POSITIONS OF THE AIDS TO NAVIGATION ARE PROVIDED FOR INFORMATION ONLY, AND SHOULD NOT BE USED FOR NAVIGATION.
11. THE LIMITS OF THE FEDERAL CHANNEL  
DEPICT THE MOST CURRENT CHANNEL  
FRAMEWORK AVAILABLE WHICH CAN ALSO BE DOWNLOADED HERE:  
<http://navigation.usace.army.mil/Survey/Framework>
12. BASE MAPPING LINEWORK OR ORTHOPHOTOGRAPHY HAS BEEN COMPILED FROM A VARIETY OF SOURCES AND DATES AND IS INTENDED TO PORTRAY GENERAL CHARACTERISTICS OF THE SHORELINE AND OTHER FEATURES.  
TEMPORAL CHANGES MAY HAVE OCCURRED SINCE THIS DATA SET WAS COLLECTED AND SOME PARTS OF THE DATA MAY NO LONGER BE AN ACCURATE REPRESENTATION OF THE SURFACE CONDITIONS.



- Shoalest Sounding per Quarter  
 --- CenterLine  
 — ToeLine  
 — QuarterLine  
 — StationLine  
 35 - 48.39  
 34 - 35  
 33 - 34  
 32 - 33  
 31 - 32  
 30 - 31  
 19.69 - 30



STA. 213+000 to STA. 223+000 -- 25 APR 23  
STA. 223+000 to STA. 234+000 -- 09 MAY 23  
STA. 234+000 to STA. 245+000 -- 07 DEC 23  
STA. 245+000 to STA. 250+439 -- 06 DEC 23

**Government**

This data is provided for general information only. It is not intended for use as an exemption under NOAA's policies regarding the release of information. It is provided "as is" without warranty of any kind, either expressed or implied, including, but not limited to, any implied warranties of merchantability, fitness for a particular purpose, or non-infringement. The user assumes all responsibility for any use of the information. The government disclaims any liability for the use of this data, either by the government or not be liable for damages, including, but not limited to, any consequential, or other damages resulting from using, modifying, or distributing this information.

U.S. ARMY CORPS OF ENGINEERS  
Philadelphia District

Drawing No.

Plot Scale

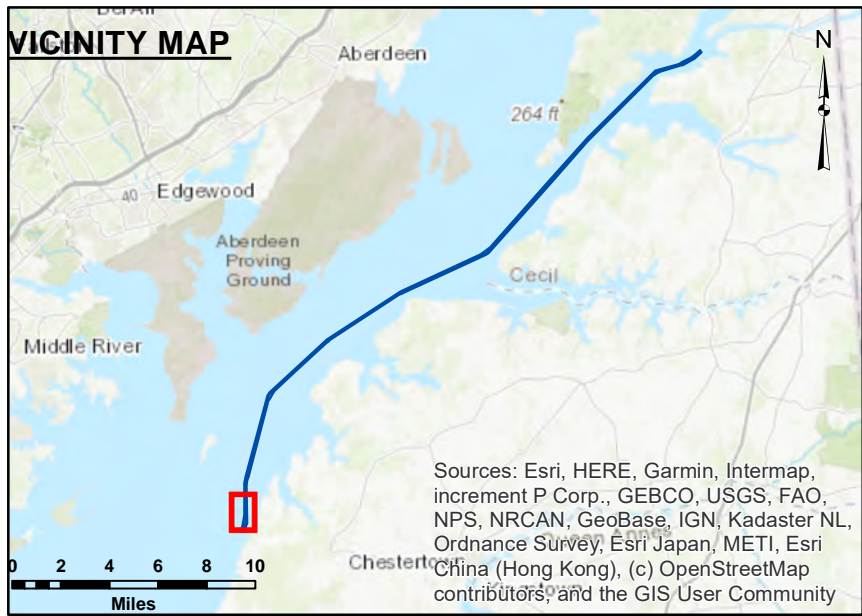
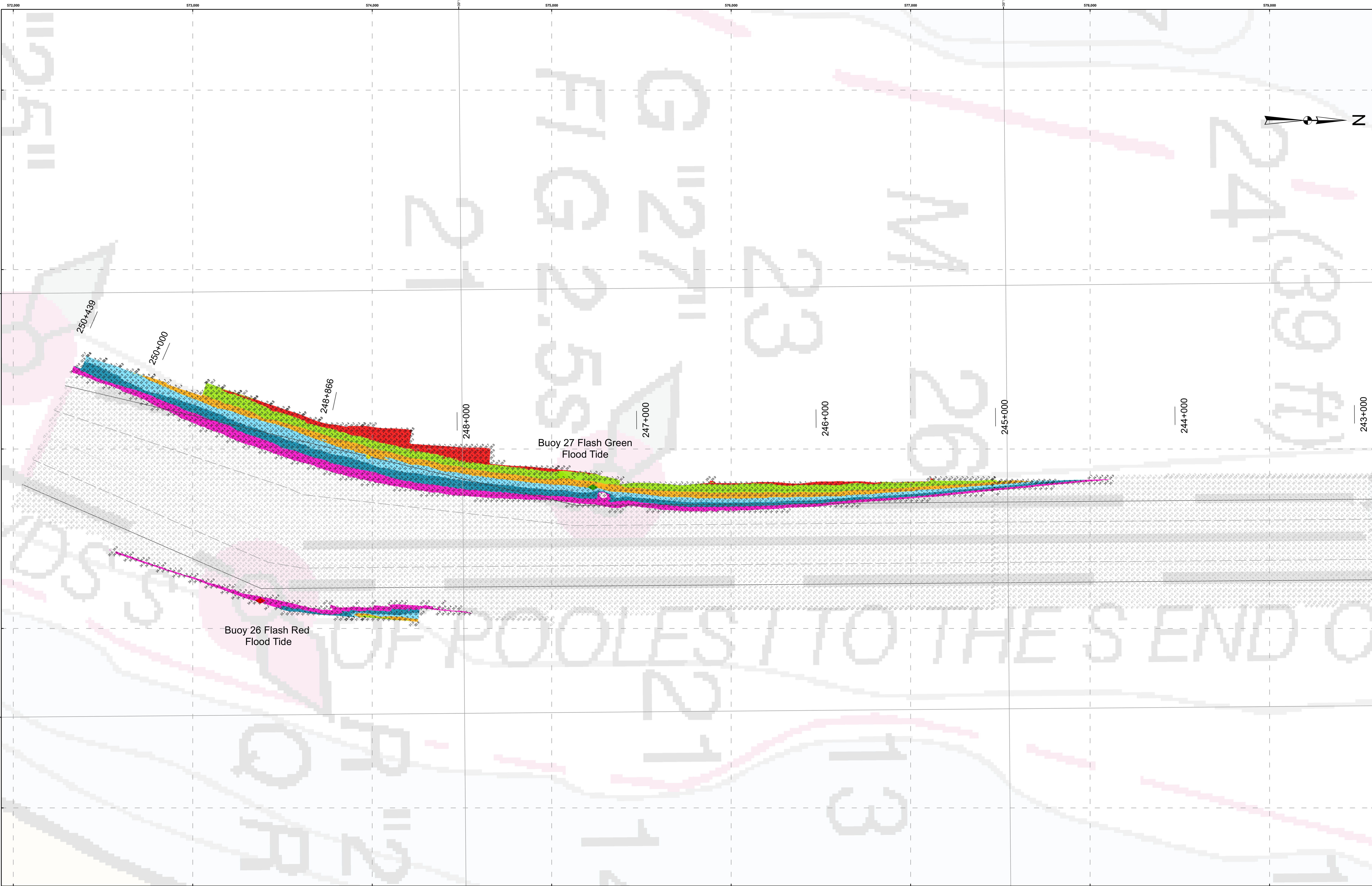
Approved:

*Chief Engineer*

Chesapeake Bay Approach Channel  
Worton Point to  
South end of Pooles Island  
Examination  
STA. 213+000 TO STA. 250+439.46

**E-CD-111**



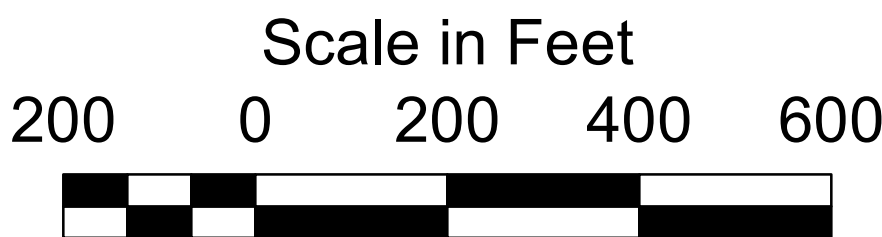


1. THIS SURVEY MEETS STANDARDS AS OUTLINED IN CORPS OF ENGINEERS' HYDROGRAPHIC SURVEY MANUAL EM1110-2-1003, DATED NOVEMBER 30, 2013 FOR NAVIGATION AND DREDGING SUPPORT SURVEYS.
2. HORIZONTAL REFERENCE - NAD 83, MARYLAND STATE PLANE, ZONE 1900, U.S. FOOT.
3. VERTICAL REFERENCE - MEAN LOWER LOW WATER, WHICH IS BELOW N.A.V.D. 88 BY THE FOLLOWING:  
0.99' from Sta. 211+000 to Sta. 220+496.49  
1.00' from Sta. 220+496.49 to Sta. 240+300.92  
1.01' from Sta. 240+300.92 to Sta. 250+439.46
4. GEOID 12B AND NOAA TIDAL EPOCH: 1983 - 2001 WERE USED. SOUNDINGS ARE EXPRESSED IN FEET AND TENTHS AND REFER TO MEAN LOWER LOW WATER.

5. SOUNDINGS WERE SELECTED FOR PLOTTING PURPOSES ONLY, USING THE MINIMUM DEPTH WITHIN A 30'X30' CELL SHIFTED TO THE CELL CENTER.
6. CONTOURS DEPICT ACTUAL LOCATION OF BATHYMETRY AND DO NOT NECESSARILY REFLECT PLOTTED SOUNDING LOCATIONS.
7. CONTOURS WERE GENERATED USING THE MINIMUM DEPTH WITHIN A 3'X3' CELL.
8. HYPACK, INC. SOFTWARE WAS USED TO PERFORM THE SOUNDING SELECTION AND CONTOUR GENERATION.
9. THE INFORMATION DEPICTED ON THIS MAP REPRESENT THE RESULTS OF SURVEYS MADE ON THE DATES INDICATED AND CAN ONLY BE CONSIDERED AS INDICATING THE GENERAL CONDITIONS EXISTING AT THAT TIME.

10. THE POSITIONS OF THE AIDS TO NAVIGATION ARE PROVIDED FOR INFORMATION ONLY, AND SHOULD NOT BE USED FOR NAVIGATION.
11. THE LIMITS OF THE FEDERAL CHANNEL DEPICT THE MOST CURRENT CHANNEL FRAMEWORK AVAILABLE WHICH CAN ALSO BE DOWNLOADED HERE:  
<http://navigation.usace.army.mil/Survey/Framework>

12. BASE MAPPING LINEWORK OR ORTHOPHOTOGRAPHY HAS BEEN COMPILED FROM A VARIETY OF SOURCES AND DATES AND IS INTENDED TO PORTRAY GENERAL CHARACTERISTICS OF THE SHORELINE AND OTHER FEATURES. TEMPORAL CHANGES MAY HAVE OCCURRED SINCE THIS DATA SET WAS COLLECTED AND SOME PARTS OF THE DATA MAY NO LONGER BE AN ACCURATE REPRESENTATION OF THE SURFACE CONDITIONS.



- Shoalest Sounding per Quarter
- CenterLine
- ToeLine
- QuarterLine
- StationLine
- 35 - 48.39
- 34 - 35
- 33 - 34
- 32 - 33
- 31 - 32
- 30 - 31
- 19.69 - 30



STA. 213+000 to STA. 223+000 -- 25 APR 23  
STA. 223+000 to STA. 234+000 -- 09 MAY 23  
STA. 234+000 to STA. 245+000 -- 07 DEC 23  
STA. 245+000 to STA. 250+439 -- 06 DEC 23

The data is provided "as is" by the government. The government makes no representation or warranty, expressed or implied, including but not limited to, accuracy, completeness, or fitness for a particular purpose, or any other implied warranty. The government disclaims any liability for the use of the data, and any damages suffered as a result of using the data, whether or not such damages were foreseeable.

U.S. ARMY CORPS OF ENGINEERS  
Philadelphia District  
Drawing No. \_\_\_\_\_  
Traced By: \_\_\_\_\_  
PLOT Scale: \_\_\_\_\_  
Approved: \_\_\_\_\_  
Chief Survey Section

Chesapeake Bay Approach Channel  
Worton Point to  
South end of Poolles Island  
Examination  
STA. 213+000 TO STA. 250+439.46

E-CD-111