

STA. 160+018 to STA. 165+000 -- 24 MAR 25
 STA. 165+000 to STA. 171+000 -- 25 MAR 30 APR 25
 STA. 171+000 to STA. 176+000 -- 27 MAR 25
 STA. 176+000 to STA. 182+500 -- 01 APR 25
 STA. 182+500 to STA. 186+332 -- 17 APR 25

DISCLAIMER:
 This data is provided for general information only. It is not intended for use in any legal proceeding. The data was collected using a HYPACK system and is subject to the limitations of that system. The data is not a substitute for a professional survey. The data is not to be used for any purpose other than that for which it was collected. The data is not to be used for any purpose other than that for which it was collected. The data is not to be used for any purpose other than that for which it was collected.

U.S. ARMY CORPS OF ENGINEERS
 PHILADELPHIA DISTRICT
 Surveyed By: _____
 Plotted By: E. Anthony
 Checked By: _____

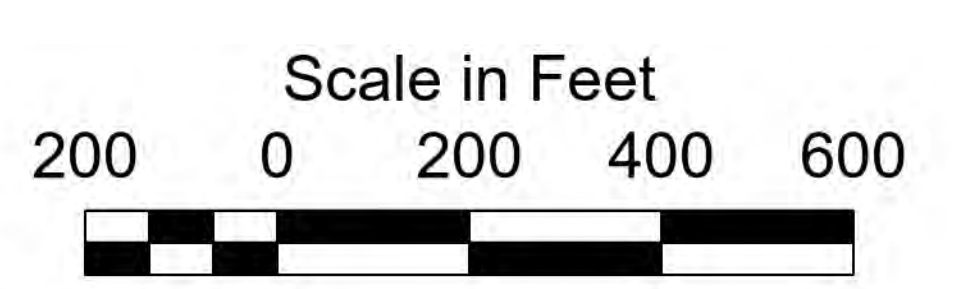
DELAWARE RIVER, PHILADELPHIA TO THE SEA
 CHERRY ISLAND RANGE
 EXAMINATION
 STA. 160+018.09 to STA. 186+331.88



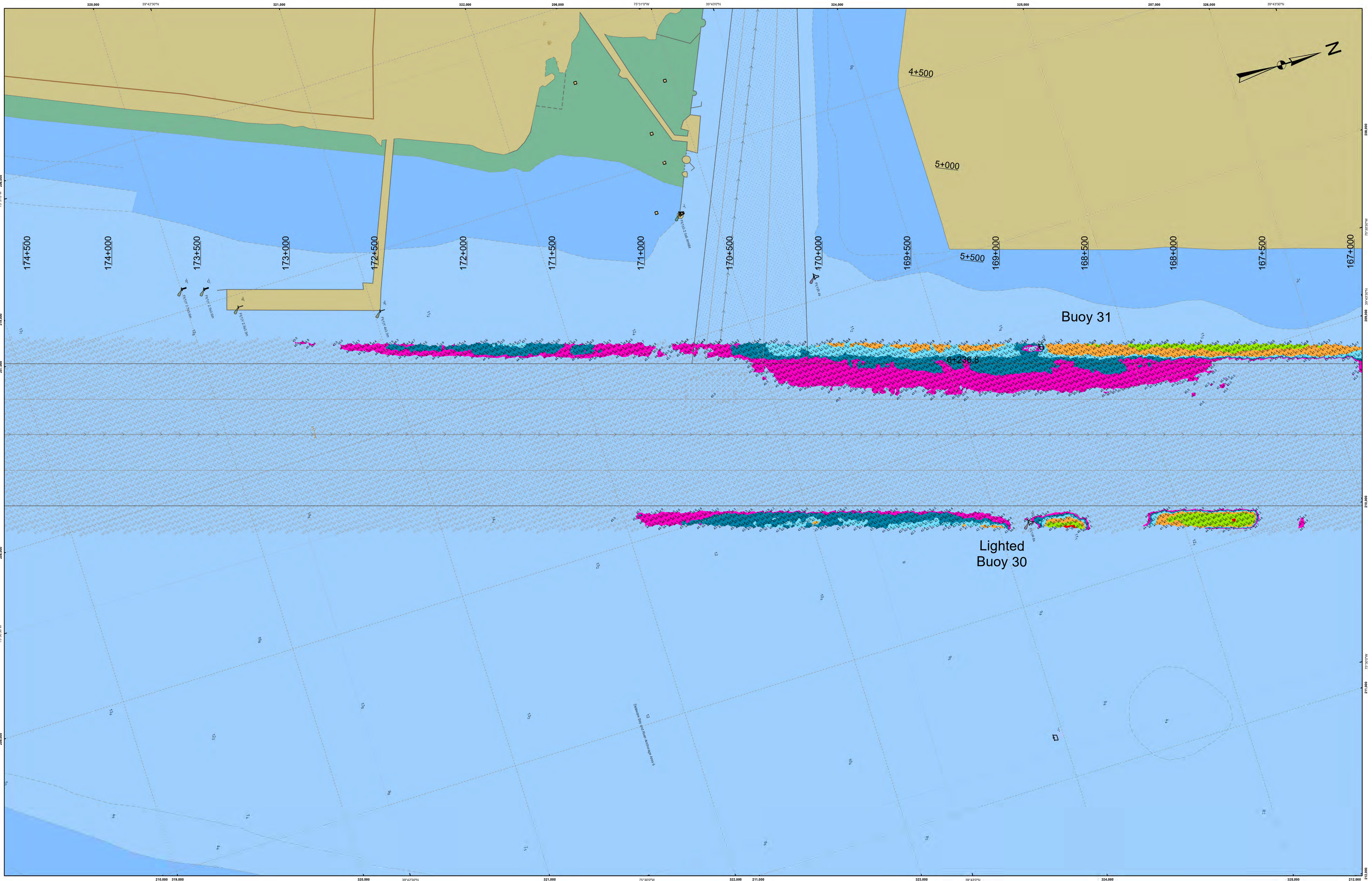
1. THIS SURVEY MEETS STANDARDS AS OUTLINED IN CORPS OF ENGINEERS' HYDROGRAPHIC SURVEY MANUAL EM1110-2-1003, DATED NOVEMBER 30, 2013 FOR NAVIGATION AND DREDGING SUPPORT SURVEYS.
2. HORIZONTAL REFERENCE - NAD 83, NEW JERSEY STATE PLANE, ZONE 2900, U.S. FOOT.
3. VERTICAL REFERENCE - MEAN LOWER LOW WATER, WHICH IS 2.98' BELOW N.A.V.D. 88.
4. GEOID 12B AND NOAA TIDAL EPOCH: 1983 - 2001 WERE USED. SOUNDINGS ARE EXPRESSED IN FEET AND TENTHS AND REFER TO MEAN LOWER LOW WATER.
5. SOUNDINGS WERE SELECTED FOR PLOTTING PURPOSES ONLY USING THE MINIMUM DEPTH WITHIN A 30'X30' CELL SHIFTED TO THE CELL CENTER.

6. CONTOURS DEPICT ACTUAL LOCATION OF BATHYMETRY AND DO NOT NECESSARILY REFLECT PLOTTED SOUNDING LOCATIONS.
7. CONTOURS WERE GENERATED USING THE MINIMUM DEPTH WITHIN A 15' X 15' CELL.
8. HYPACK, INC. SOFTWARE WAS USED TO PERFORM THE SOUNDING SELECTION AND CONTOUR GENERATION.
9. THE INFORMATION DEPICTED ON THIS MAP REPRESENT THE RESULTS OF SURVEYS MADE ON THE DATES INDICATED AND CAN ONLY BE CONSIDERED AS INDICATING THE GENERAL CONDITIONS EXISTING AT THAT TIME.

10. THE POSITIONS OF THE AIDS TO NAVIGATION ARE PROVIDED FOR INFORMATION ONLY, AND SHOULD NOT BE USED FOR NAVIGATION.
11. THE LIMITS OF THE FEDERAL CHANNEL DEPICT THE MOST CURRENT CHANNEL FRAMEWORK AVAILABLE WHICH CAN ALSO BE DOWNLOADED HERE: <http://navigation.usace.army.mil/Survey/Framework>
12. BASE MAPPING LINWORK OR ORTHOPHOTOGRAPHY HAS BEEN COMPILED FROM A VARIETY OF SOURCES AND DATES AND IS INTENDED TO PORTRAY GENERAL CHARACTERISTICS OF THE SHORELINE AND OTHER FEATURES. TEMPORAL CHANGES MAY HAVE OCCURRED SINCE THIS DATA SET WAS COLLECTED AND SOME PARTS OF THE DATA MAY NO LONGER BE AN ACCURATE REPRESENTATION OF THE SURFACE CONDITIONS.



- Shoalest Sounding per Quarter
- CenterLine
- ToeLine
- QuarterLine
- StationLine
- 45 - 53.953
- 44 - 45
- 43 - 44
- 42 - 43
- 41 - 42
- 40 - 41
- 26.9 - 40



US Army Corps of Engineers Philadelphia District

STA. 160+018 to STA. 165+000 -- 24 MAR 25
 STA. 165+000 to STA. 171+000 -- 25 MAR 30 APR 25
 STA. 171+000 to STA. 176+000 -- 27 MAR 25
 STA. 176+000 to STA. 182+500 -- 01 APR 25
 STA. 182+500 to STA. 186+332 -- 17 APR 25

THIS DRAWING IS PROVIDED FOR GENERAL INFORMATION ONLY. IT IS NOT TO BE USED FOR CONSTRUCTION OR AS A BASIS FOR DESIGN. THE USER ASSUMES ALL LIABILITY FOR THE USE OF THIS INFORMATION. THE CORPS OF ENGINEERS DISCLAIMS ANY LIABILITY FOR THE USE OF THIS INFORMATION. THE CORPS OF ENGINEERS DISCLAIMS ANY LIABILITY FOR THE USE OF THIS INFORMATION. THE CORPS OF ENGINEERS DISCLAIMS ANY LIABILITY FOR THE USE OF THIS INFORMATION.

U.S. ARMY CORPS OF ENGINEERS PHILADELPHIA DISTRICT

Surveyed By: _____
 Drawn By: _____
 Plotted By: E. Anthony
 Field Scale: _____
 Checked By: _____
 Approved: _____
 Chief Survey Section

DELAWARE RIVER, PHILADELPHIA TO THE SEA CHERRY ISLAND RANGE EXAMINATION

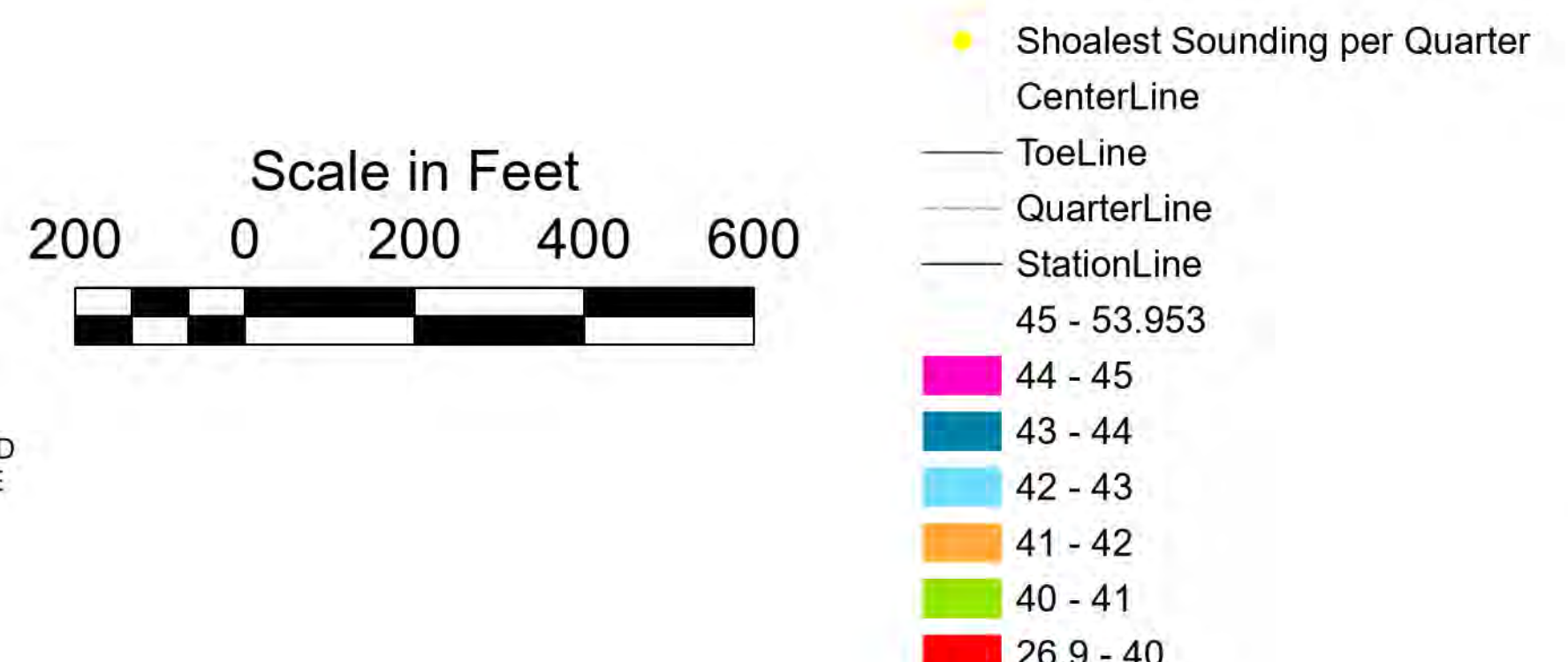
STA. 160+018.09 to STA. 186+331.88



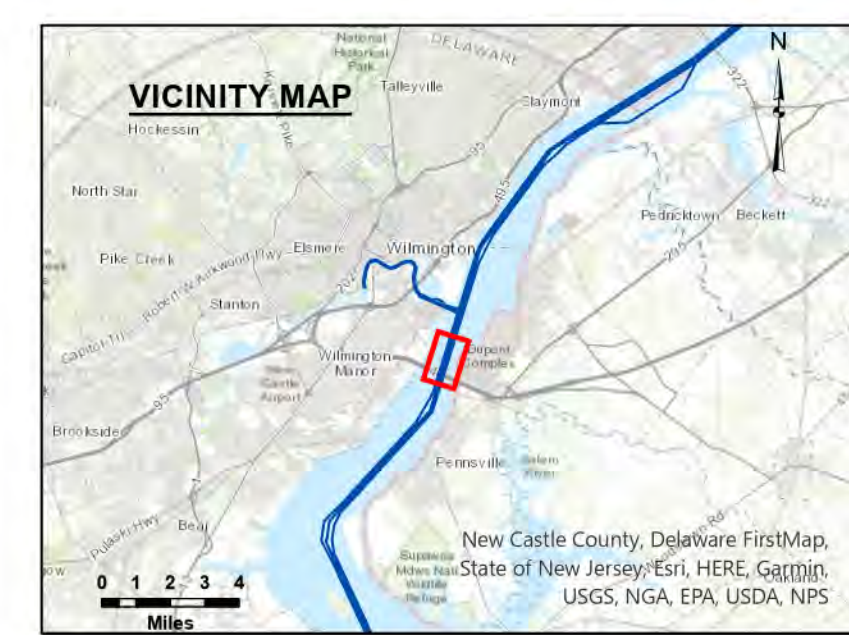
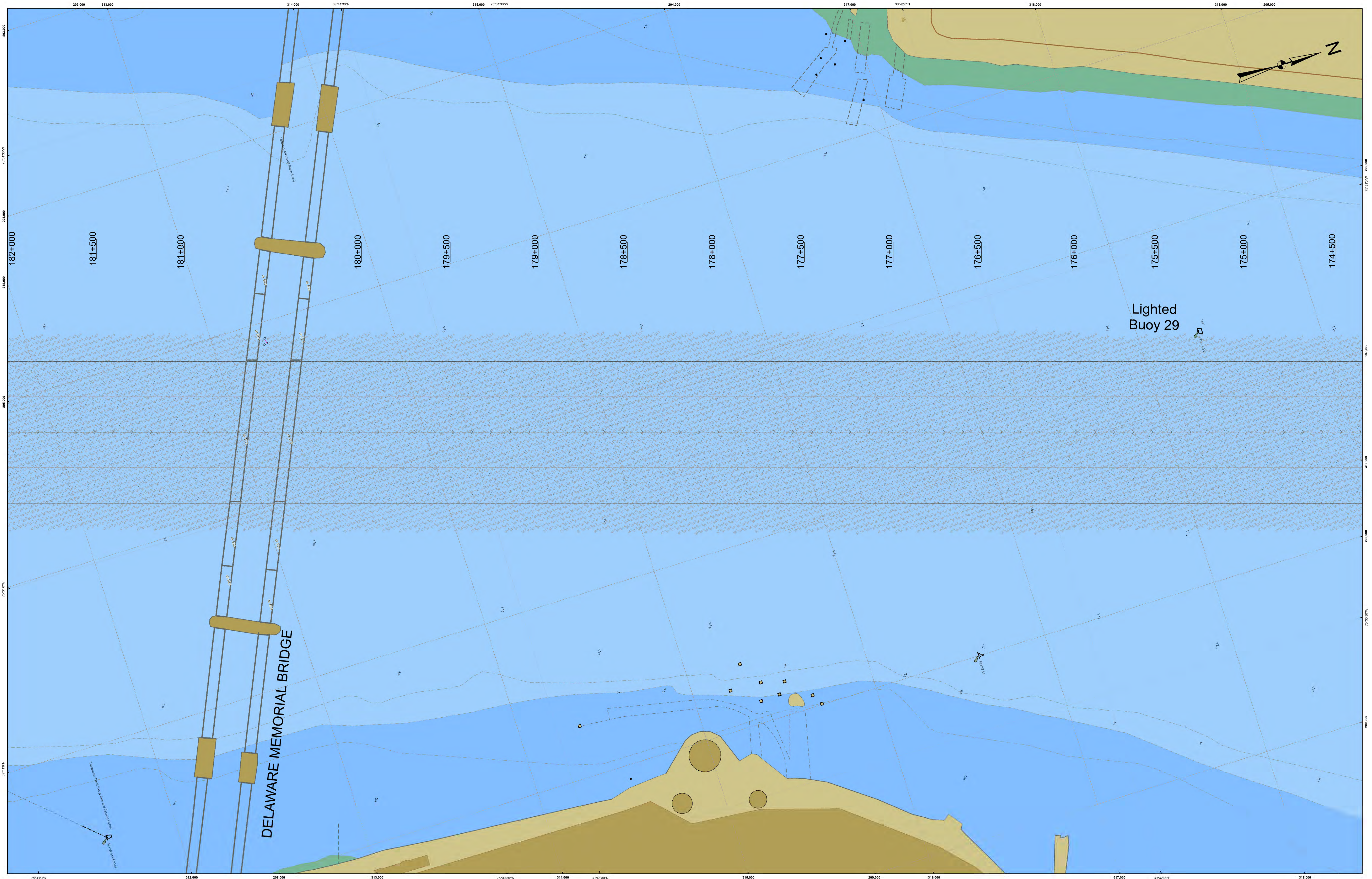
1. THIS SURVEY MEETS STANDARDS AS OUTLINED IN CORPS OF ENGINEERS' HYDROGRAPHIC SURVEY MANUAL EM1110-2-1003, DATED NOVEMBER 30, 2013 FOR NAVIGATION AND DREDGING SUPPORT SURVEYS.
2. HORIZONTAL REFERENCE - NAD 83, NEW JERSEY STATE PLANE, ZONE 2900, U.S. FOOT.
3. VERTICAL REFERENCE - MEAN LOWER LOW WATER, WHICH IS 2.98' BELOW N.A.V.D. 88.
4. GEOID 12B AND NOAA TIDAL EPOCH: 1983 - 2001 WERE USED. SOUNDINGS ARE EXPRESSED IN FEET AND TENTHS AND REFER TO MEAN LOWER LOW WATER.
5. SOUNDINGS WERE SELECTED FOR PLOTTING PURPOSES ONLY USING THE MINIMUM DEPTH WITHIN A 30'X30' CELL SHIFTED TO THE CELL CENTER.

6. CONTOURS DEPICT ACTUAL LOCATION OF BATHYMETRY AND DO NOT NECESSARILY REFLECT PLOTTED SOUNDING LOCATIONS.
7. CONTOURS WERE GENERATED USING THE MINIMUM DEPTH WITHIN A 15' X 15' CELL.
8. HYPACK, INC. SOFTWARE WAS USED TO PERFORM THE SOUNDING SELECTION AND CONTOUR GENERATION.
9. THE INFORMATION DEPICTED ON THIS MAP REPRESENT THE RESULTS OF SURVEYS MADE ON THE DATES INDICATED AND CAN ONLY BE CONSIDERED AS INDICATING THE GENERAL CONDITIONS EXISTING AT THAT TIME.

10. THE POSITIONS OF THE AIDS TO NAVIGATION ARE PROVIDED FOR INFORMATION ONLY, AND SHOULD NOT BE USED FOR NAVIGATION.
11. THE LIMITS OF THE FEDERAL CHANNEL DEPICT THE MOST CURRENT CHANNEL FRAMEWORK AVAILABLE WHICH CAN ALSO BE DOWNLOADED HERE: <http://navigation.usace.army.mil/Survey/Framework>
12. BASE MAPPING LINWORK OR ORTHOPHOTOGRAPHY HAS BEEN COMPILED FROM A VARIETY OF SOURCES AND DATES AND IS INTENDED TO PORTRAY GENERAL CHARACTERISTICS OF THE SHORELINE AND OTHER FEATURES. TEMPORAL CHANGES MAY HAVE OCCURRED SINCE THIS DATA SET WAS COLLECTED AND SOME PARTS OF THE DATA MAY NO LONGER BE AN ACCURATE REPRESENTATION OF THE SURFACE CONDITIONS.



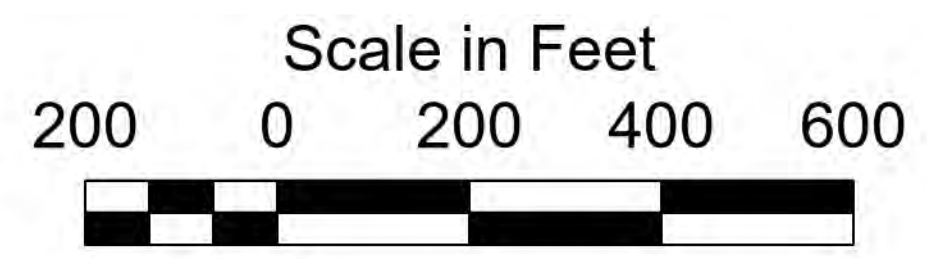
E-PS-356



1. THIS SURVEY MEETS STANDARDS AS OUTLINED IN CORPS OF ENGINEERS' HYDROGRAPHIC SURVEY MANUAL EM1110-2-1003, DATED NOVEMBER 30, 2013 FOR NAVIGATION AND DREDGING SUPPORT SURVEYS.
2. HORIZONTAL REFERENCE - NAD 83, NEW JERSEY STATE PLANE, ZONE 2900, U.S. FOOT.
3. VERTICAL REFERENCE - MEAN LOWER LOW WATER, WHICH IS 2.98' BELOW N.A.V.D. 88.
4. GEOID 12B AND NOAA TIDAL EPOCH: 1983 - 2001 WERE USED. SOUNDINGS ARE EXPRESSED IN FEET AND TENTHS AND REFER TO MEAN LOWER LOW WATER.
5. SOUNDINGS WERE SELECTED FOR PLOTTING PURPOSES ONLY USING THE MINIMUM DEPTH WITHIN A 30'X30' CELL SHIFTED TO THE CELL CENTER.

6. CONTOURS DEPICT ACTUAL LOCATION OF BATHYMETRY AND DO NOT NECESSARILY REFLECT PLOTTED SOUNDING LOCATIONS.
7. CONTOURS WERE GENERATED USING THE MINIMUM DEPTH WITHIN A 15' X 15' CELL.
8. HYPACK, INC. SOFTWARE WAS USED TO PERFORM THE SOUNDING SELECTION AND CONTOUR GENERATION.
9. THE INFORMATION DEPICTED ON THIS MAP REPRESENT THE RESULTS OF SURVEYS MADE ON THE DATES INDICATED AND CAN ONLY BE CONSIDERED AS INDICATING THE GENERAL CONDITIONS EXISTING AT THAT TIME.

10. THE POSITIONS OF THE AIDS TO NAVIGATION ARE PROVIDED FOR INFORMATION ONLY, AND SHOULD NOT BE USED FOR NAVIGATION.
11. THE LIMITS OF THE FEDERAL CHANNEL DEPICT THE MOST CURRENT CHANNEL FRAMEWORK AVAILABLE WHICH CAN ALSO BE DOWNLOADED HERE: <http://navigation.usace.army.mil/Survey/Framework>
12. BASE MAPPING LINEWORK OR ORTHOPHOTOGRAPHY HAS BEEN COMPILED FROM A VARIETY OF SOURCES AND DATES AND IS INTENDED TO PORTRAY GENERAL CHARACTERISTICS OF THE SHORELINE AND OTHER FEATURES. TEMPORAL CHANGES MAY HAVE OCCURRED SINCE THIS DATA SET WAS COLLECTED AND SOME PARTS OF THE DATA MAY NO LONGER BE AN ACCURATE REPRESENTATION OF THE SURFACE CONDITIONS.



- Shoalest Sounding per Quarter
 - CenterLine
 - ToeLine
 - QuarterLine
 - StationLine
- | |
|-----------|
| 44 - 45 |
| 43 - 44 |
| 42 - 43 |
| 41 - 42 |
| 40 - 41 |
| 26.9 - 40 |



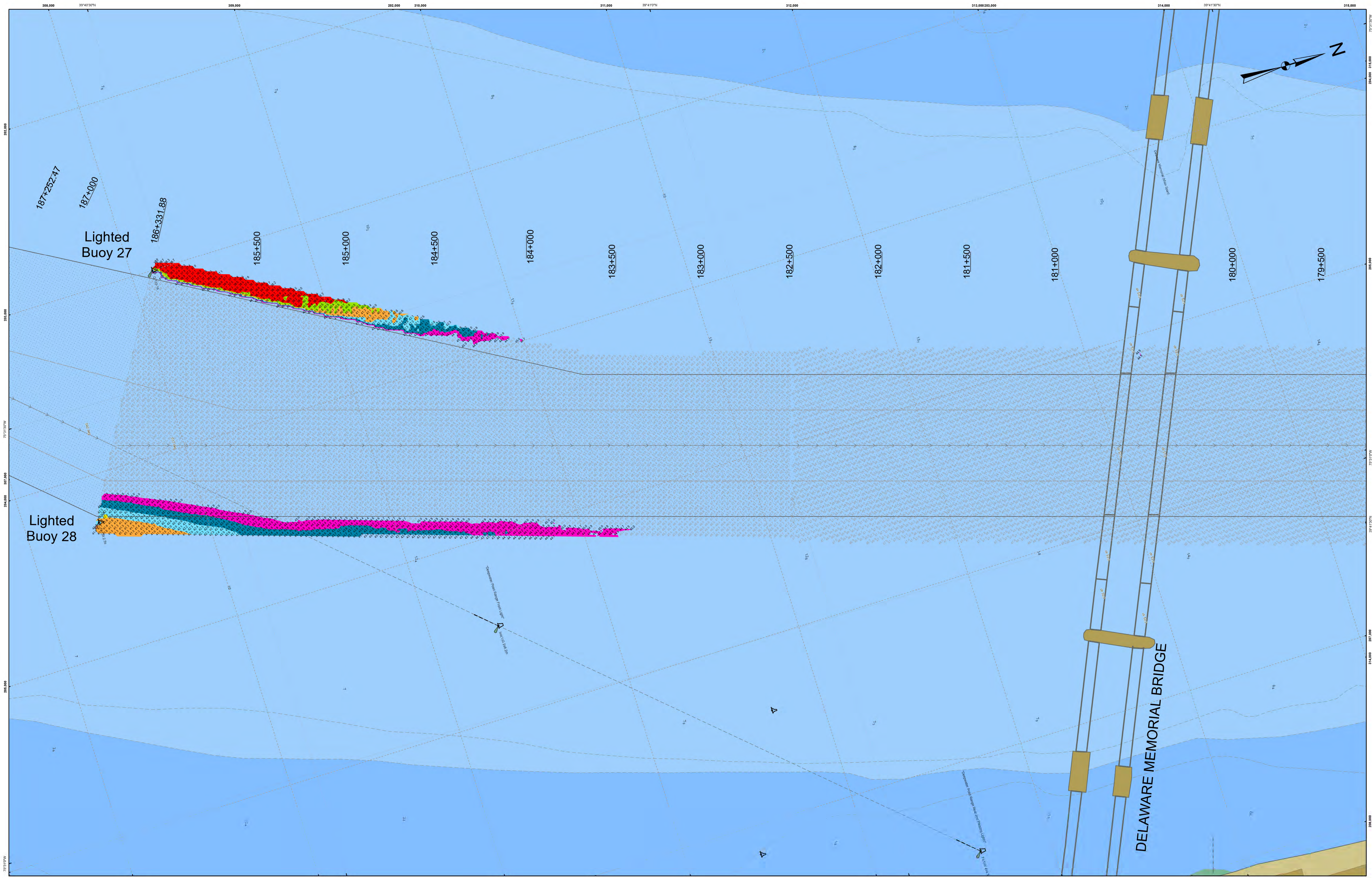
STA. 160+018 to STA. 165+000 -- 24 MAR 25
 STA. 165+000 to STA. 171+000 -- 25 MAR 25
 STA. 171+000 to STA. 176+000 -- 27 MAR 25
 STA. 176+000 to STA. 182+500 -- 01 APR 25
 STA. 182+500 to STA. 186+332 -- 17 APR 25

THIS MAP IS PROVIDED FOR GENERAL INFORMATION ONLY. IT IS NOT TO BE USED FOR NAVIGATION. THE DATA WERE OBTAINED FROM A VARIETY OF SOURCES AND DATES AND IS INTENDED TO PORTRAY GENERAL CHARACTERISTICS OF THE SHORELINE AND OTHER FEATURES. TEMPORAL CHANGES MAY HAVE OCCURRED SINCE THIS DATA SET WAS COLLECTED AND SOME PARTS OF THE DATA MAY NO LONGER BE AN ACCURATE REPRESENTATION OF THE SURFACE CONDITIONS.

U.S. ARMY CORPS OF ENGINEERS
 PHILADELPHIA DISTRICT
 Drawing No. _____
 Field Scale _____
 Approved _____
 Checked By: E. Anthony
 Chief Survey Section

DELAWARE RIVER, PHILADELPHIA TO THE SEA
 CHERRY ISLAND RANGE
 EXAMINATION
 STA. 160+018.09 to STA. 186+331.88

E-PS-356



US Army Corps of Engineers Philadelphia District

STA. 160+018 to STA. 165+000 -- 24 MAR 25
 STA. 165+000 to STA. 171+000 -- 25 MAR 30 APR 25
 STA. 171+000 to STA. 176+000 -- 27 MAR 25
 STA. 176+000 to STA. 182+500 -- 01 APR 25
 STA. 182+500 to STA. 186+332 -- 17 APR 25

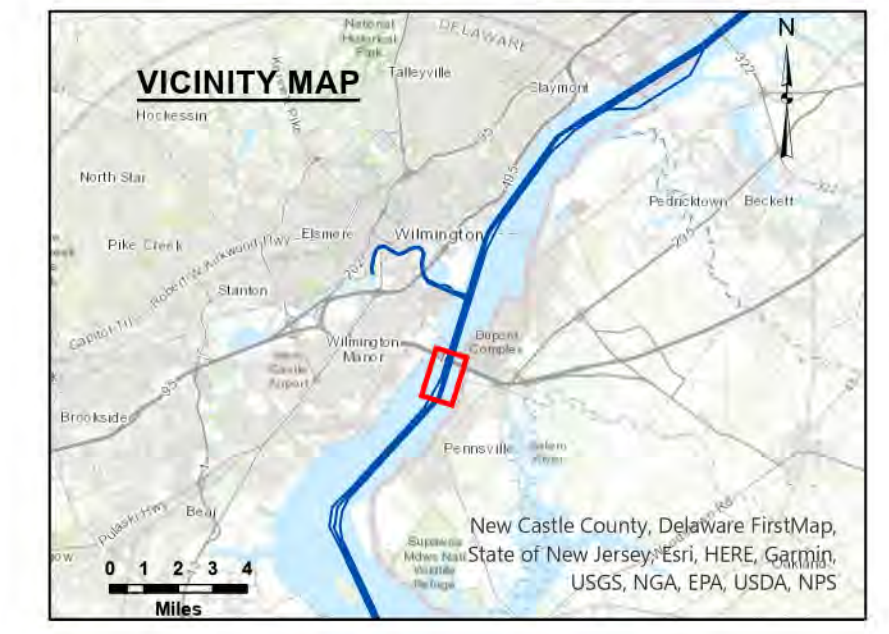
THIS DRAWING IS PROVIDED FOR INFORMATION ONLY. IT IS NOT TO BE USED FOR NAVIGATION. THE DATA IS BASED ON THE MOST CURRENT CHANNEL FRAMEWORK AVAILABLE WHICH CAN ALSO BE DOWNLOADED HERE: <http://navigation.usace.army.mil/Survey/Framework>

THE INFORMATION DEPICTED ON THIS MAP REPRESENT THE RESULTS OF SURVEYS MADE ON THE DATES INDICATED AND CAN ONLY BE CONSIDERED AS INDICATING THE GENERAL CONDITIONS EXISTING AT THAT TIME.

U.S. ARMY CORPS OF ENGINEERS PHILADELPHIA DISTRICT	Surveyed By:
Drawing No.	Plotted By:
Field Scale	E. Anthony
Approved:	Checked By:
Chief Survey Section	

**DELAWARE RIVER, PHILADELPHIA TO THE SEA
 CHERRY ISLAND RANGE
 EXAMINATION**

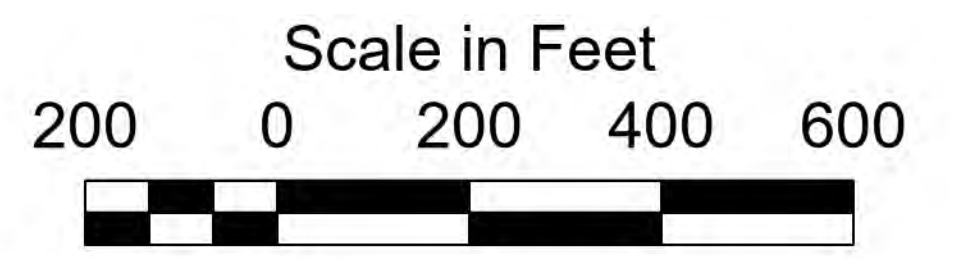
STA. 160+018.09 to STA. 186+331.88



1. THIS SURVEY MEETS STANDARDS AS OUTLINED IN CORPS OF ENGINEERS' HYDROGRAPHIC SURVEY MANUAL EM1110-2-1003, DATED NOVEMBER 30, 2013 FOR NAVIGATION AND DREDGING SUPPORT SURVEYS.
2. HORIZONTAL REFERENCE - NAD 83, NEW JERSEY STATE PLANE, ZONE 2900, U.S. FOOT.
3. VERTICAL REFERENCE - MEAN LOWER LOW WATER, WHICH IS 2.98' BELOW N.A.V.D. 88.
4. GEOID 12B AND NOAA TIDAL EPOCH: 1983 - 2001 WERE USED. SOUNDINGS ARE EXPRESSED IN FEET AND TENTHS AND REFER TO MEAN LOWER LOW WATER.
5. SOUNDINGS WERE SELECTED FOR PLOTTING PURPOSES ONLY USING THE MINIMUM DEPTH WITHIN A 30'X30' CELL SHIFTED TO THE CELL CENTER.

6. CONTOURS DEPICT ACTUAL LOCATION OF BATHYMETRY AND DO NOT NECESSARILY REFLECT PLOTTED SOUNDING LOCATIONS.
7. CONTOURS WERE GENERATED USING THE MINIMUM DEPTH WITHIN A 15' X 15' CELL.
8. HYPACK, INC. SOFTWARE WAS USED TO PERFORM THE SOUNDING SELECTION AND CONTOUR GENERATION.
9. THE INFORMATION DEPICTED ON THIS MAP REPRESENT THE RESULTS OF SURVEYS MADE ON THE DATES INDICATED AND CAN ONLY BE CONSIDERED AS INDICATING THE GENERAL CONDITIONS EXISTING AT THAT TIME.

10. THE POSITIONS OF THE AIDS TO NAVIGATION ARE PROVIDED FOR INFORMATION ONLY, AND SHOULD NOT BE USED FOR NAVIGATION.
11. THE LIMITS OF THE FEDERAL CHANNEL DEPICT THE MOST CURRENT CHANNEL FRAMEWORK AVAILABLE WHICH CAN ALSO BE DOWNLOADED HERE: <http://navigation.usace.army.mil/Survey/Framework>
12. BASE MAPPING LINWORK OR ORTHOPHOTOGRAPHY HAS BEEN COMPILED FROM A VARIETY OF SOURCES AND DATES AND IS INTENDED TO PORTRAY GENERAL CHARACTERISTICS OF THE SHORELINE AND OTHER FEATURES. TEMPORAL CHANGES MAY HAVE OCCURRED SINCE THIS DATA SET WAS COLLECTED AND SOME PARTS OF THE DATA MAY NO LONGER BE AN ACCURATE REPRESENTATION OF THE SURFACE CONDITIONS.



- Shoalest Sounding per Quarter
- CenterLine
- ToeLine
- QuarterLine
- StationLine
- 45 - 53.953
- 44 - 45
- 43 - 44
- 42 - 43
- 41 - 42
- 40 - 41
- 26.9 - 40