

STA. 60+987 to STA. 64+935 -- 27 SEP 24
 STA. 64+935 to STA. 73+263 -- 30 SEP 24
 STA. 73+263 to STA. 79+508 -- 02 OCT 24

DISCLAIMER
 This data is provided for general information only. It is not intended for use in navigation. The user assumes all liability for the use of this data. The government makes no representation or warranty, expressed or implied, including but not limited to, accuracy, completeness, or fitness for a particular purpose. The government shall not be held liable for any damages, including consequential damages, arising from the use of this data. The government shall not be held liable for any errors or omissions in this data. The government shall not be held liable for any changes in this data. The government shall not be held liable for any updates or modifications to this data. The government shall not be held liable for any deletions or removals of this data.

U.S. ARMY CORPS OF ENGINEERS
 PHILADELPHIA DISTRICT
 Drawing No. _____
 Project No. _____
 E. Anthony
 Checked By: _____
 Approved: _____
 Date: _____

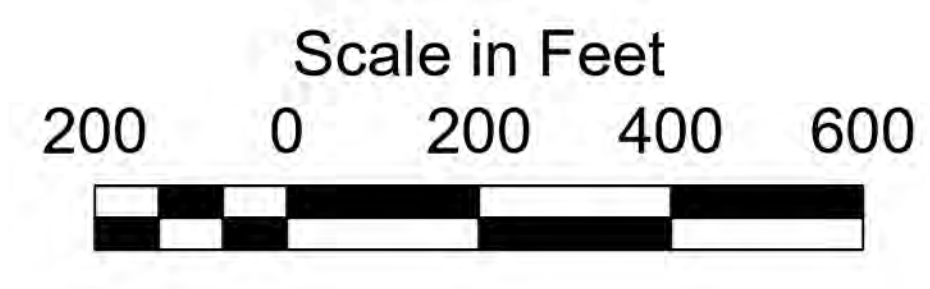
DELAWARE RIVER, PHILADELPHIA TO TRENTON
 BEVERLY RANGE TO DEVLIN RANGE
 EXAMINATION
 STA. 60+987 to STA. 79+508



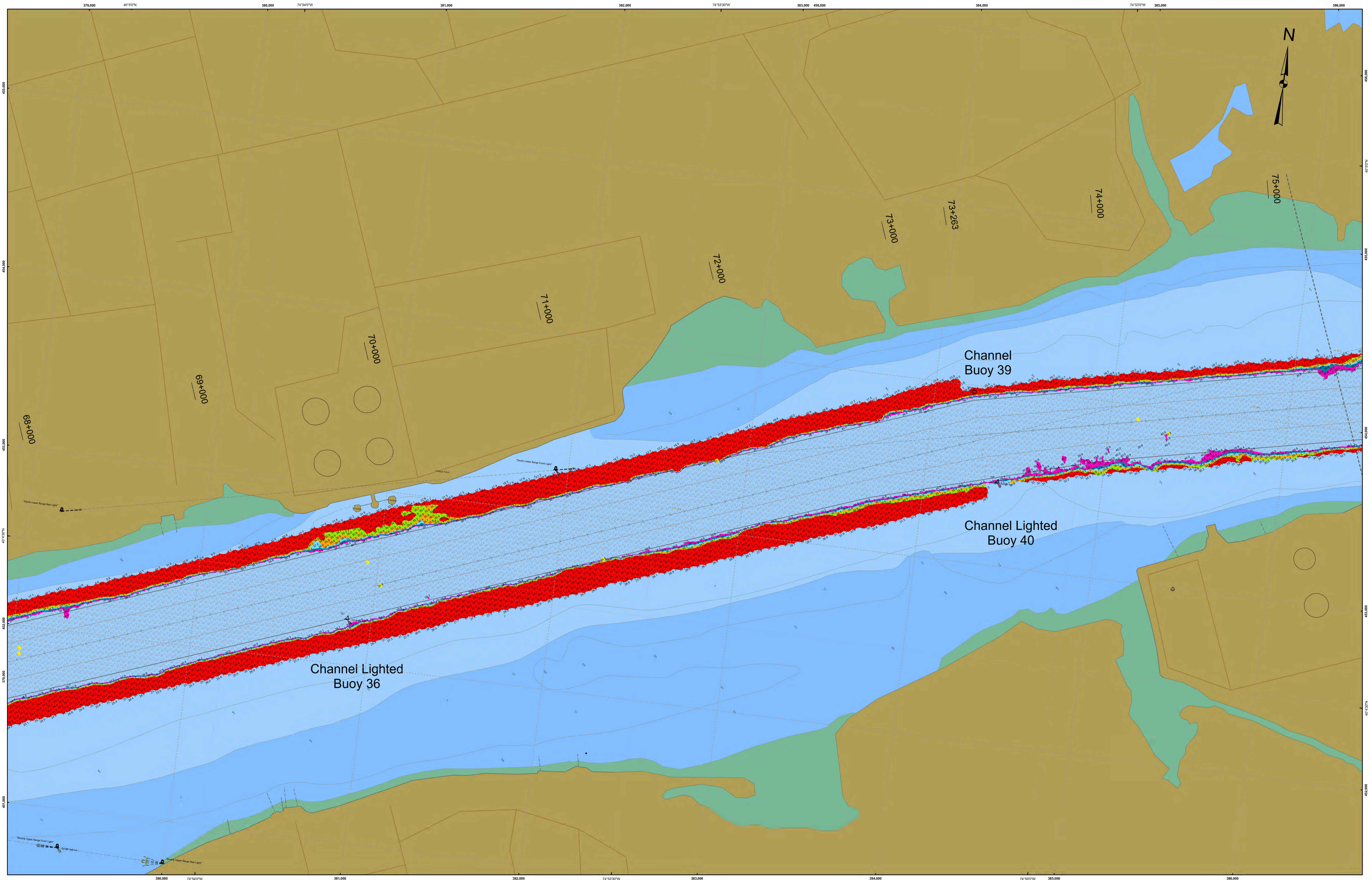
- THIS SURVEY MEETS STANDARDS AS OUTLINED IN CORPS OF ENGINEERS' HYDROGRAPHIC SURVEY MANUAL EM1110-2-1003, DATED NOVEMBER 30, 2013 FOR NAVIGATION AND DREDGING SUPPORT SURVEYS.
- HORIZONTAL REFERENCE - NAD 83, NEW JERSEY STATE PLANE, ZONE 2900, U.S. FOOT.
- VERTICAL REFERENCE - MEAN LOWER LOW WATER, WHICH IS BELOW N.A.V.D. 88 BY THE FOLLOWING:
 3.19' from STA. 10+651.37 to STA. 79+508.34
- GEOID 12B AND NOAA TIDAL EPOCH: 1983 - 2001 WERE USED. SOUNDINGS ARE EXPRESSED IN FEET AND TENTHS AND REFER TO MEAN LOWER LOW WATER.

- SOUNDINGS WERE SELECTED FOR PLOTTING PURPOSES ONLY, USING THE MINIMUM DEPTH WITHIN A 30'X30' CELL SHIFTED TO THE CELL CENTER.
- CONTOURS DEPICT ACTUAL LOCATION OF BATHYMETRY AND DO NOT NECESSARILY REFLECT PLOTTED SOUNDING LOCATIONS.
- CONTOURS WERE GENERATED USING THE MINIMUM DEPTH WITHIN A 15'X15' CELL.
- HYPACK, INC. SOFTWARE WAS USED TO PERFORM THE SOUNDING SELECTION AND CONTOUR GENERATION.
- THE INFORMATION DEPICTED ON THIS MAP REPRESENT THE RESULTS OF SURVEYS MADE ON THE DATES INDICATED AND CAN ONLY BE CONSIDERED AS INDICATING THE GENERAL CONDITIONS EXISTING AT THAT TIME.

- THE POSITIONS OF THE AIDS TO NAVIGATION ARE PROVIDED FOR INFORMATION ONLY, AND SHOULD NOT BE USED FOR NAVIGATION.
- THE LIMITS OF THE FEDERAL CHANNEL DEPICT THE MOST CURRENT CHANNEL FRAMEWORK AVAILABLE WHICH CAN ALSO BE DOWNLOADED HERE:
<http://navigation.usace.army.mil/Survey/Framework>
- BASE MAPPING LINWORK OR ORTHOPHOTOGRAPHY HAS BEEN COMPILED FROM A VARIETY OF SOURCES AND DATES AND IS INTENDED TO PORTRAY GENERAL CHARACTERISTICS OF THE SHORELINE AND OTHER FEATURES. TEMPORAL CHANGES MAY HAVE OCCURRED SINCE THIS DATA SET WAS COLLECTED AND SOME PARTS OF THE DATA MAY NO LONGER BE AN ACCURATE REPRESENTATION OF THE SURFACE CONDITIONS.



Shoalest Sounding per Quarter	Color	Range
CenterLine	Pink	39 - 40
ToeLine	Light Blue	37 - 38
QuarterLine	Yellow	36 - 37
StationLine	Green	35 - 36
	Red	7.68 - 35



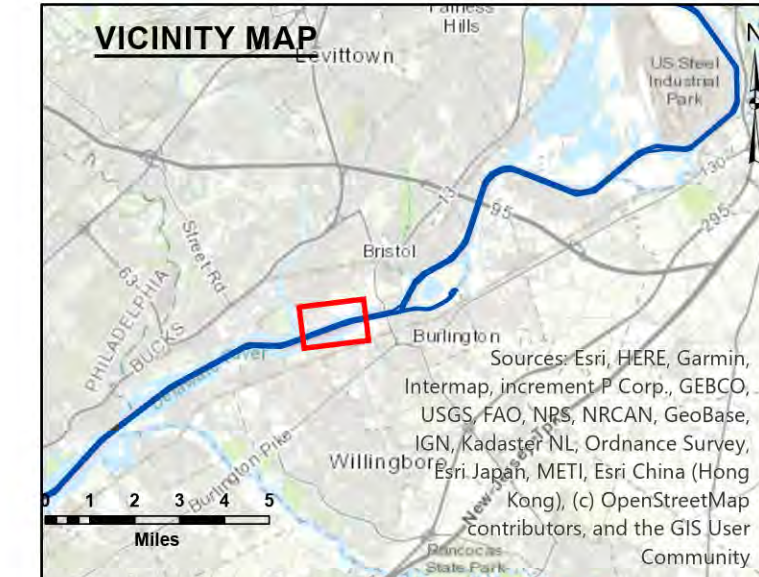
STA. 60+987 to STA. 64+935 -- 27 SEP 24
 STA. 64+935 to STA. 73+263 -- 30 SEP 24
 STA. 73+263 to STA. 79+508 -- 02 OCT 24

The materials are provided as is. The government makes no representation or warranty, expressed or implied, including accuracy, completeness, or availability. It is the user's responsibility to verify the accuracy and completeness of the data provided. The government assumes no liability for the use of the data for purposes not intended by the government, including navigation.

U.S. ARMY CORPS OF ENGINEERS
 PHILADELPHIA DISTRICT
 Drawing No. _____
 Project No. _____
 Project By: E. Anthony
 Checked By: _____
 Approved: _____
 Date: _____

DELAWARE RIVER, PHILADELPHIA TO TRENTON
 BEVERLY RANGE TO DEVLIN RANGE
 EXAMINATION
 STA. 60+987 to STA. 79+508

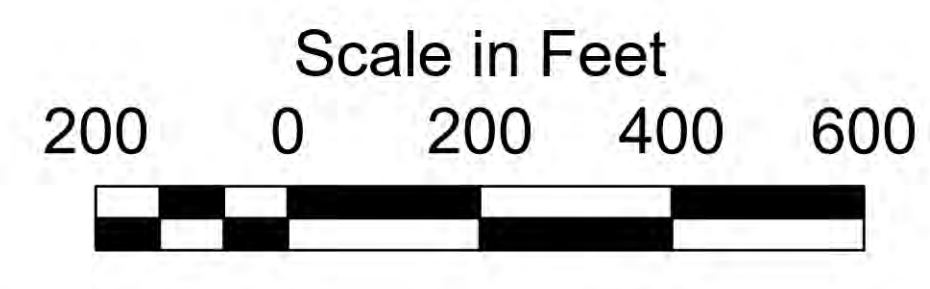
E-PT-85



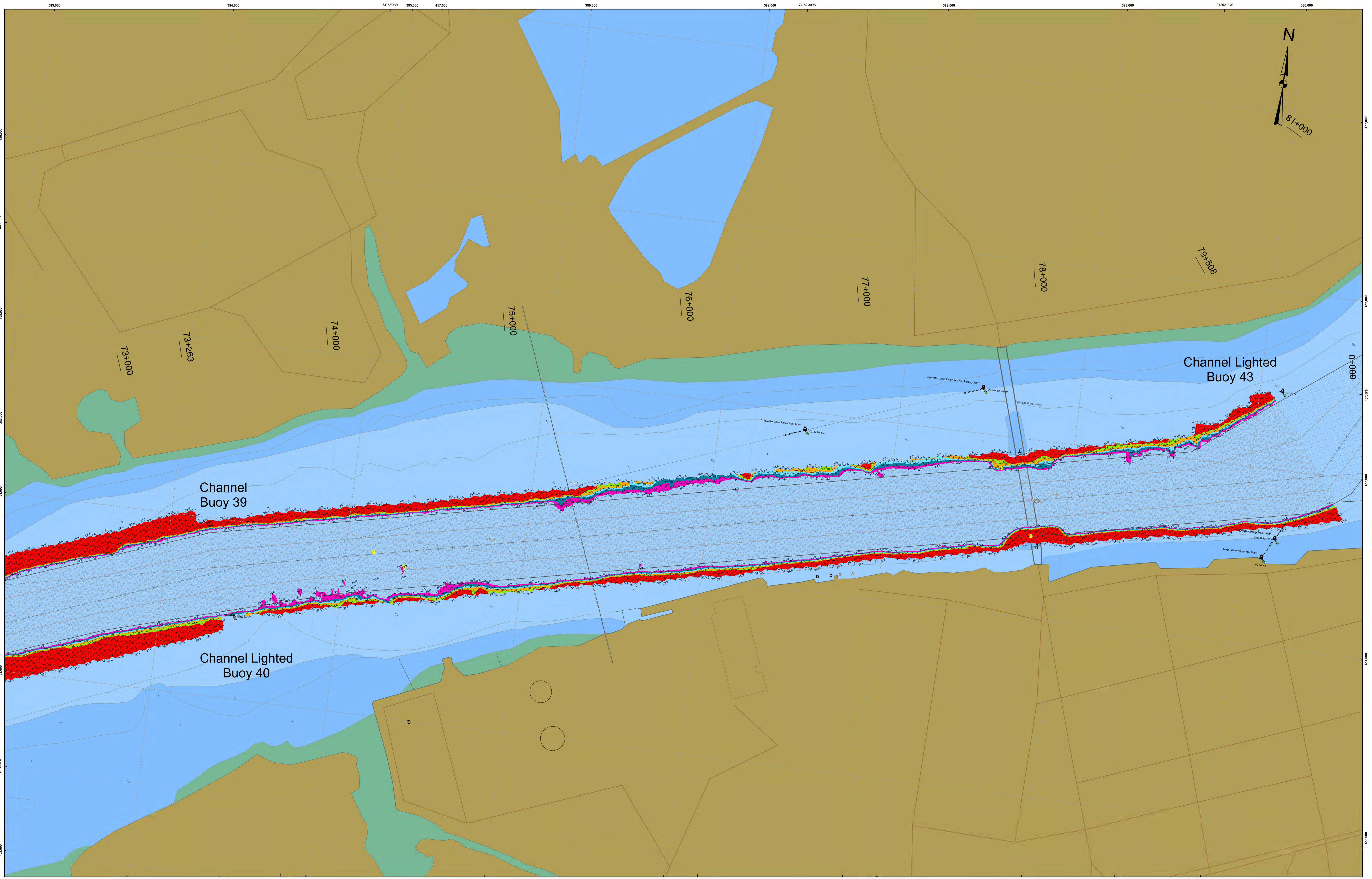
- THIS SURVEY MEETS STANDARDS AS OUTLINED IN CORPS OF ENGINEERS' HYDROGRAPHIC SURVEY MANUAL EM1110-2-1003, DATED NOVEMBER 30, 2013 FOR NAVIGATION AND DREDGING SUPPORT SURVEYS.
- HORIZONTAL REFERENCE - NAD 83, NEW JERSEY STATE PLANE, ZONE 2900, U.S. FOOT.
- VERTICAL REFERENCE - MEAN LOWER LOW WATER, WHICH IS BELOW N.A.V.D. 88 BY THE FOLLOWING: 3.19' from STA. 10+651.37 to STA. 79+508.34
- GEOID 12B AND NOAA TIDAL EPOCH: 1983 - 2001 WERE USED. SOUNDINGS ARE EXPRESSED IN FEET AND TENTHS AND REFER TO MEAN LOWER LOW WATER.

- SOUNDINGS WERE SELECTED FOR PLOTTING PURPOSES ONLY, USING THE MINIMUM DEPTH WITHIN A 30'X30' CELL SHIFTED TO THE CELL CENTER.
- CONTOURS DEPICT ACTUAL LOCATION OF BATHYMETRY AND DO NOT NECESSARILY REFLECT PLOTTED SOUNDING LOCATIONS.
- CONTOURS WERE GENERATED USING THE MINIMUM DEPTH WITHIN A 15'X15' CELL.
- HYPACK, INC. SOFTWARE WAS USED TO PERFORM THE SOUNDING SELECTION AND CONTOUR GENERATION.
- THE INFORMATION DEPICTED ON THIS MAP REPRESENT THE RESULTS OF SURVEYS MADE ON THE DATES INDICATED AND CAN ONLY BE CONSIDERED AS INDICATING THE GENERAL CONDITIONS EXISTING AT THAT TIME.

- THE POSITIONS OF THE AIDS TO NAVIGATION ARE PROVIDED FOR INFORMATION ONLY, AND SHOULD NOT BE USED FOR NAVIGATION.
- THE LIMITS OF THE FEDERAL CHANNEL DEPICT THE MOST CURRENT CHANNEL FRAMEWORK AVAILABLE WHICH CAN ALSO BE DOWNLOADED HERE: <http://navigation.usace.army.mil/Survey/Framework>
- BASE MAPPING LINEWORK OR ORTHOPHOTOGRAPHY HAS BEEN COMPILED FROM A VARIETY OF SOURCES AND DATES AND IS INTENDED TO PORTRAY GENERAL CHARACTERISTICS OF THE SHORELINE AND OTHER FEATURES. TEMPORAL CHANGES MAY HAVE OCCURRED SINCE THIS DATA SET WAS COLLECTED AND SOME PARTS OF THE DATA MAY NO LONGER BE AN ACCURATE REPRESENTATION OF THE SURFACE CONDITIONS.



Shoalest Sounding per Quarter	Color	Range
CenterLine	White	40 - 53.55
ToeLine	Black	39 - 40
QuarterLine	Blue	38 - 39
StationLine	Green	37 - 38
	Yellow	36 - 37
	Orange	35 - 36
	Red	7.68 - 35



STA. 60+987 to STA. 64+935 -- 27 SEP 24
 STA. 64+935 to STA. 73+263 -- 30 SEP 24
 STA. 73+263 to STA. 79+508 -- 02 OCT 24

DISCLAIMER
 This data is provided for general information only. It is not intended for use in navigation. The user assumes all responsibility for the accuracy and completeness of the data provided. The data is provided as is, without warranty of any kind, express or implied, including but not limited to the accuracy and completeness of the data provided. The data is provided for informational purposes only and should not be used for navigation. The data is provided as is, without warranty of any kind, express or implied, including but not limited to the accuracy and completeness of the data provided. The data is provided for informational purposes only and should not be used for navigation.

Surveyed By: _____
 Philadelphia District
 Checked By: E. Anthony
 Approved: _____
 Date: _____

DELAWARE RIVER, PHILADELPHIA TO TRENTON
BEVERLY RANGE TO DEVLIN RANGE
EXAMINATION
 STA. 60+987 to STA. 79+508

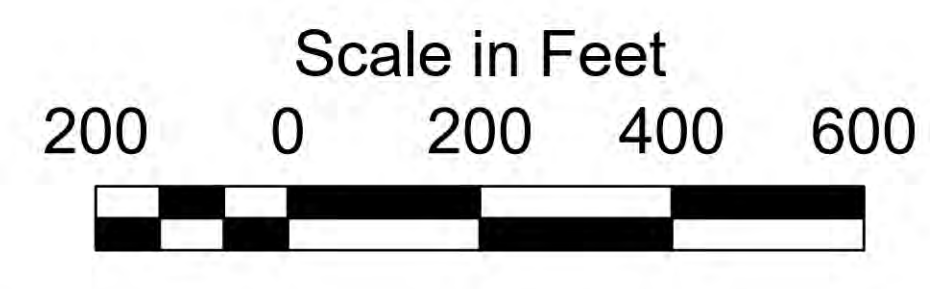
E-PT-85



1. THIS SURVEY MEETS STANDARDS AS OUTLINED IN CORPS OF ENGINEERS' HYDROGRAPHIC SURVEY MANUAL EM1110-2-1003, DATED NOVEMBER 30, 2013 FOR NAVIGATION AND DREDGING SUPPORT SURVEYS.
2. HORIZONTAL REFERENCE - NAD 83, NEW JERSEY STATE PLANE, ZONE 2900, U.S. FOOT.
3. VERTICAL REFERENCE - MEAN LOWER LOW WATER, WHICH IS BELOW N.A.V.D. 88 BY THE FOLLOWING:
3.19' from STA. 10+651.37 to STA. 79+508.34
4. GEOID 12B AND NOAA TIDAL EPOCH: 1983 - 2001 WERE USED. SOUNDINGS ARE EXPRESSED IN FEET AND TENTHS AND REFER TO MEAN LOWER LOW WATER.

5. SOUNDINGS WERE SELECTED FOR PLOTTING PURPOSES ONLY, USING THE MINIMUM DEPTH WITHIN A 30'X30' CELL SHIFTED TO THE CELL CENTER.
6. CONTOURS DEPICT ACTUAL LOCATION OF BATHYMETRY AND DO NOT NECESSARILY REFLECT PLOTTED SOUNDING LOCATIONS.
7. CONTOURS WERE GENERATED USING THE MINIMUM DEPTH WITHIN A 15'X15' CELL.
8. HYPACK, INC. SOFTWARE WAS USED TO PERFORM THE SOUNDING SELECTION AND CONTOUR GENERATION.
9. THE INFORMATION DEPICTED ON THIS MAP REPRESENT THE RESULTS OF SURVEYS MADE ON THE DATES INDICATED AND CAN ONLY BE CONSIDERED AS INDICATING THE GENERAL CONDITIONS EXISTING AT THAT TIME.

10. THE POSITIONS OF THE AIDS TO NAVIGATION ARE PROVIDED FOR INFORMATION ONLY, AND SHOULD NOT BE USED FOR NAVIGATION.
11. THE LIMITS OF THE FEDERAL CHANNEL DEPICT THE MOST CURRENT CHANNEL FRAMEWORK AVAILABLE WHICH CAN ALSO BE DOWNLOADED HERE:
<http://navigation.usace.army.mil/Survey/Framework>
12. BASE MAPPING LINEWORK OR ORTHOPHOTOGRAPHY HAS BEEN COMPILED FROM A VARIETY OF SOURCES AND DATES AND IS INTENDED TO PORTRAY GENERAL CHARACTERISTICS OF THE SHORELINE AND OTHER FEATURES. TEMPORAL CHANGES MAY HAVE OCCURRED SINCE THIS DATA SET WAS COLLECTED AND SOME PARTS OF THE DATA MAY NO LONGER BE AN ACCURATE REPRESENTATION OF THE SURFACE CONDITIONS.



Shoalest Sounding per Quarter	Color
40 - 53.55	Red
39 - 40	Pink
38 - 39	Light Blue
37 - 38	Blue
36 - 37	Light Green
35 - 36	Green
7.68 - 35	Dark Green

- CenterLine
- ToeLine
- QuarterLine
- StationLine