

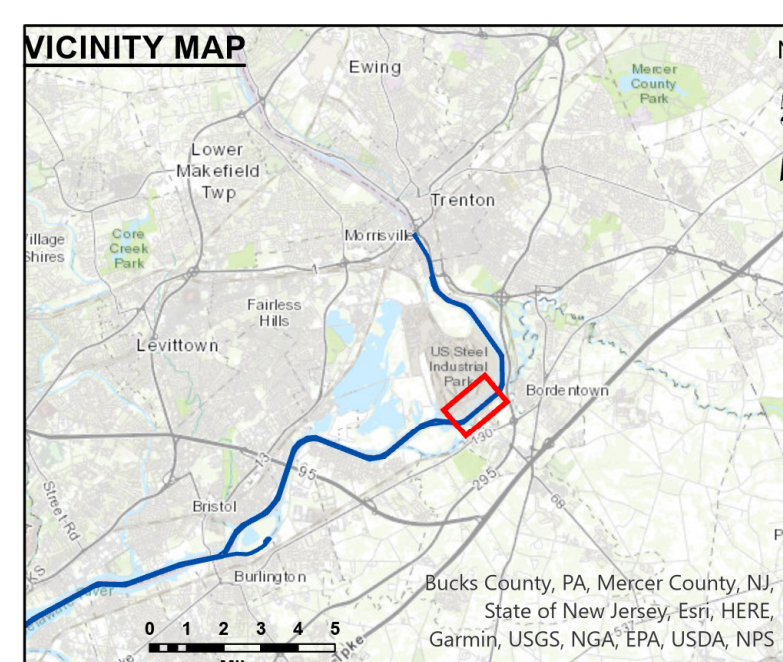
STA. 124+677 to STA. 125+693 -- 14 NOV 24
 STA. 125+693 to STA. 133+441 -- 18 NOV 24
 STA. 133+441 to STA. 145+010 -- 02 DEC 24

This information is provided for general information only. It is not intended for use as a navigational aid. The user is responsible for determining the accuracy and reliability of the information. The government disclaims any liability for the use of the information. This information is provided for general information only. It is not intended for use as a navigational aid. The user is responsible for determining the accuracy and reliability of the information. The government disclaims any liability for the use of the information.

Surveyed By: U.S. ARMY CORPS OF ENGINEERS PHILADELPHIA DISTRICT
 Plotted By: E. Anthony
 Checked By: CHM Survey Section

DELAWARE RIVER, PHILADELPHIA TO TRENTON BLAKE RANGE TO DUCK ISLAND RANGE EXAMINATION STA. 124+677 to STA. 145+010

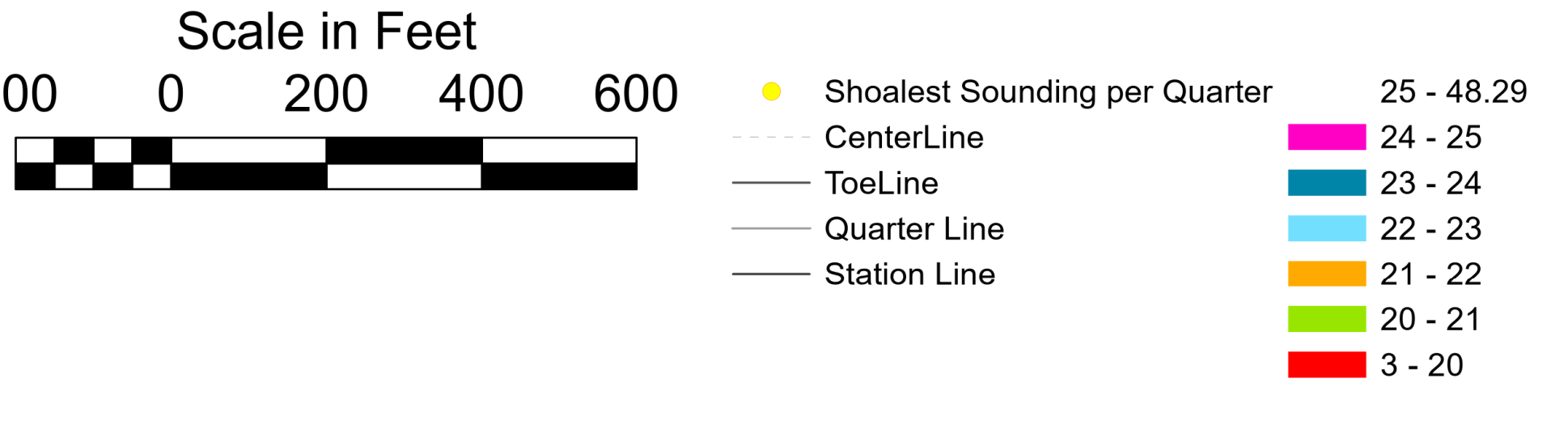
E-PT-87

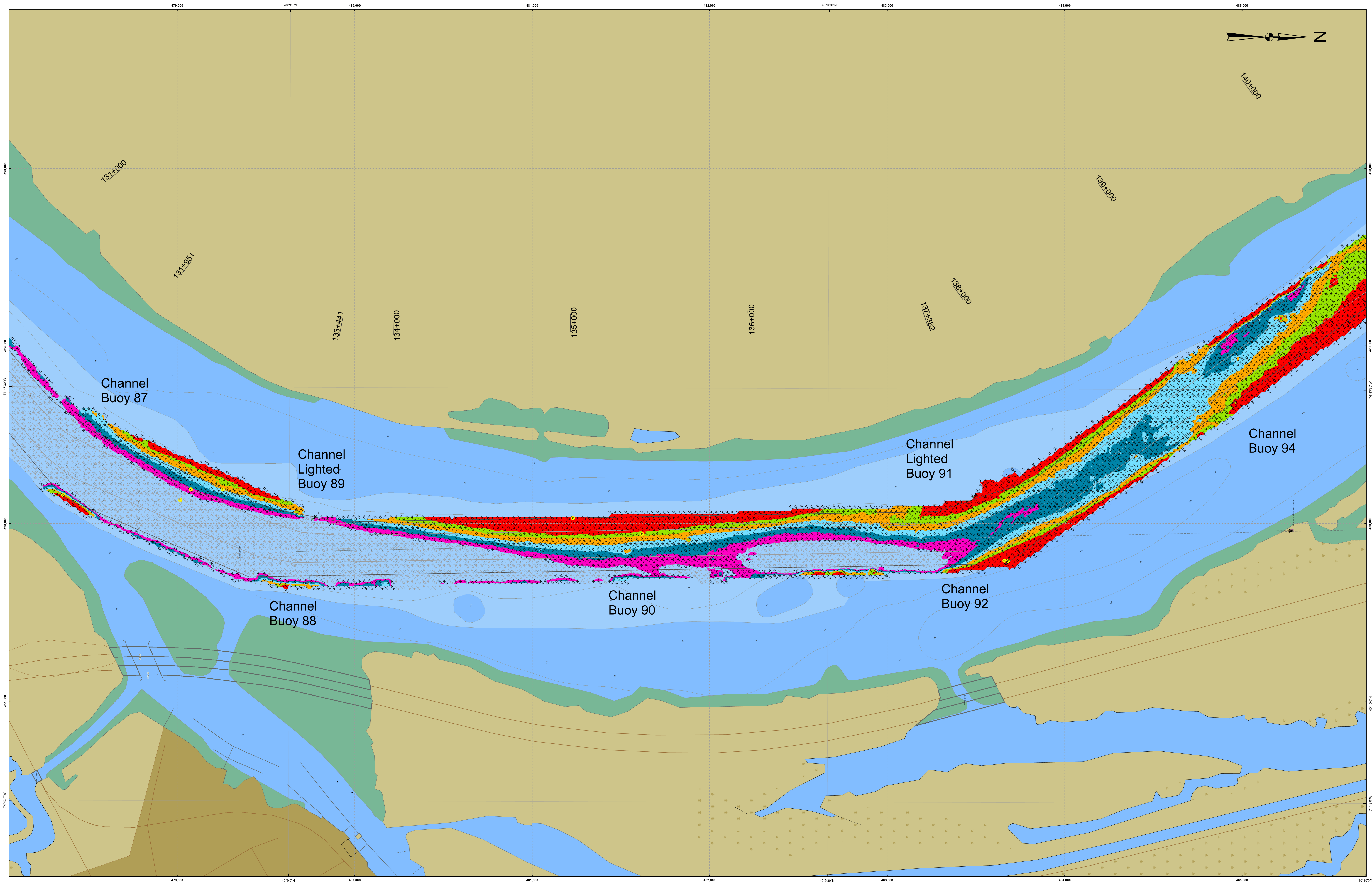


- THIS SURVEY MEETS STANDARDS AS OUTLINED IN CORPS OF ENGINEERS' HYDROGRAPHIC SURVEY MANUAL EM1110-2-1003, DATED NOVEMBER 30, 2013 FOR NAVIGATION AND DREDGING SUPPORT SURVEYS.
- HORIZONTAL REFERENCE - NAD 83, NEW JERSEY STATE PLANE, ZONE 2900, U.S. FOOT.
- VERTICAL REFERENCE - MEAN LOWER LOW WATER, WHICH IS BELOW N.A.V.D. 88 BY THE FOLLOWING:
 3.74' from STA. 125+692.79 to STA. 131+951.24
 3.75' from STA. 131+951.24 to STA. 133+440.76
 3.77' from STA. 133+440.76 to STA. 137+000
 3.80' from STA. 137+000 to STA. 143+000
 3.83' from STA. 143+000 to STA. 150+669.12
- GEOD 12B AND NOAA TIDAL EPOCH: 1983 - 2001 WERE USED. SOUNDINGS ARE EXPRESSED IN FEET AND TENTHS AND REFER TO MEAN LOWER LOW WATER.

- SOUNDINGS WERE SELECTED FOR PLOTTING PURPOSES ONLY, USING THE MINIMUM DEPTH WITHIN A 30'X30' CELL SHIFTED TO THE CELL CENTER.
- CONTOURS DEPICT ACTUAL LOCATION OF BATHYMETRY AND DO NOT NECESSARILY REFLECT PLOTTED SOUNDING LOCATIONS.
- CONTOURS WERE GENERATED USING THE MINIMUM DEPTH WITHIN A 15'X15' CELL.
- HYPACK, INC. SOFTWARE WAS USED TO PERFORM THE SOUNDING SELECTION AND CONTOUR GENERATION.
- THE INFORMATION DEPICTED ON THIS MAP REPRESENT THE RESULTS OF SURVEYS MADE ON THE DATES INDICATED AND CAN ONLY BE CONSIDERED AS INDICATING THE GENERAL CONDITIONS EXISTING AT THAT TIME.

- THE POSITIONS OF THE AIDS TO NAVIGATION ARE PROVIDED FOR INFORMATION ONLY, AND SHOULD NOT BE USED FOR NAVIGATION.
- THE LIMITS OF THE FEDERAL CHANNEL DEPICT THE MOST CURRENT CHANNEL FRAMEWORK AVAILABLE WHICH CAN ALSO BE DOWNLOADED HERE:
<http://navigation.usace.army.mil/Survey/Framework>
- BASE MAPPING LINENWORK OR ORTHOPHOTOGRAPHY HAS BEEN COMPILED FROM A VARIETY OF SOURCES AND DATES AND IS INTENDED TO PORTRAY GENERAL CHARACTERISTICS OF THE SHORELINE AND OTHER FEATURES. TEMPORAL CHANGES MAY HAVE OCCURRED SINCE THIS DATA SET WAS COLLECTED AND SOME PARTS OF THE DATA MAY NO LONGER BE AN ACCURATE REPRESENTATION OF THE SURFACE CONDITIONS.





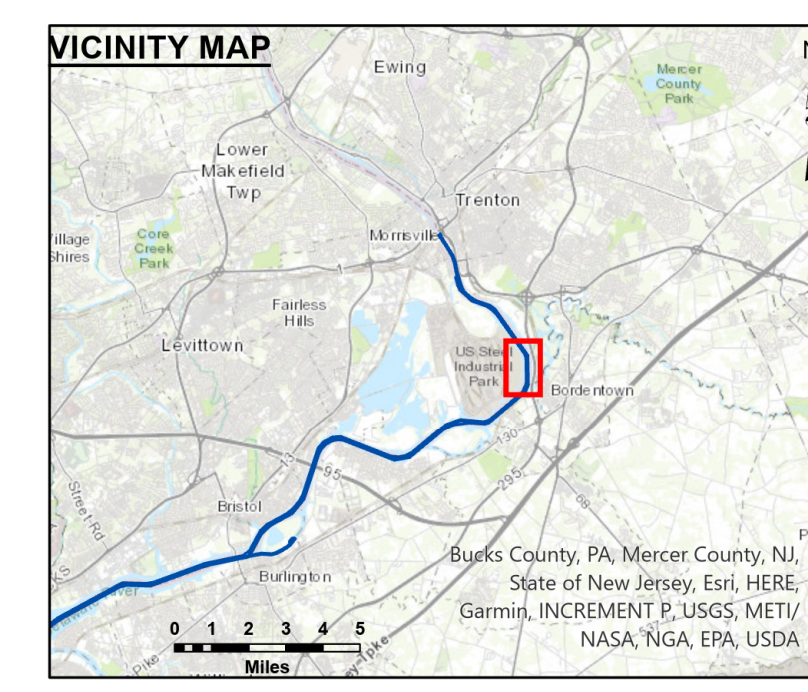
STA. 124+677 to STA. 125+693 -- 14 NOV 24
 STA. 125+693 to STA. 133+441 -- 18 NOV 24
 STA. 133+441 to STA. 145+010 -- 02 DEC 24

This map was prepared for general information only. It is not intended for use as a navigational aid. The user is advised to consult the appropriate nautical charts and publications for the latest information. The government disclaims any liability for the use of this information. The user is advised to exercise caution when using this information for any purpose other than that intended.

U.S. ARMY CORPS OF ENGINEERS
 PHILADELPHIA DISTRICT
 Surveyed By: _____
 Plotted By: E. Anthony
 Checked By: _____
 Approved: _____
 Date: _____

DELAWARE RIVER, PHILADELPHIA TO TRENTON
 BLAKE RANGE TO DUCK ISLAND RANGE
 EXAMINATION
 STA. 124+677 to STA. 145+010

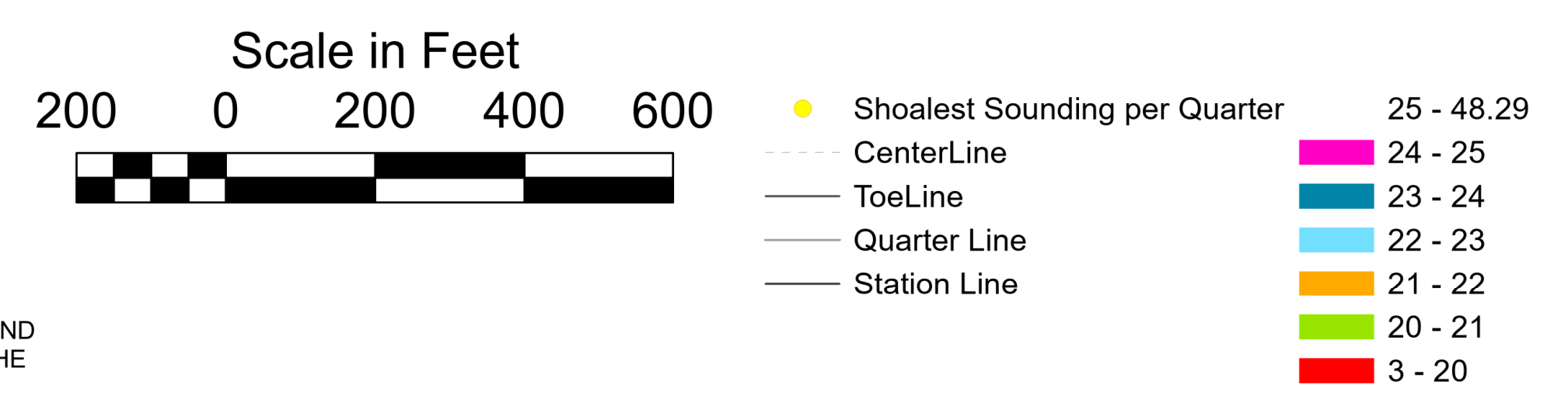
E-PT-87

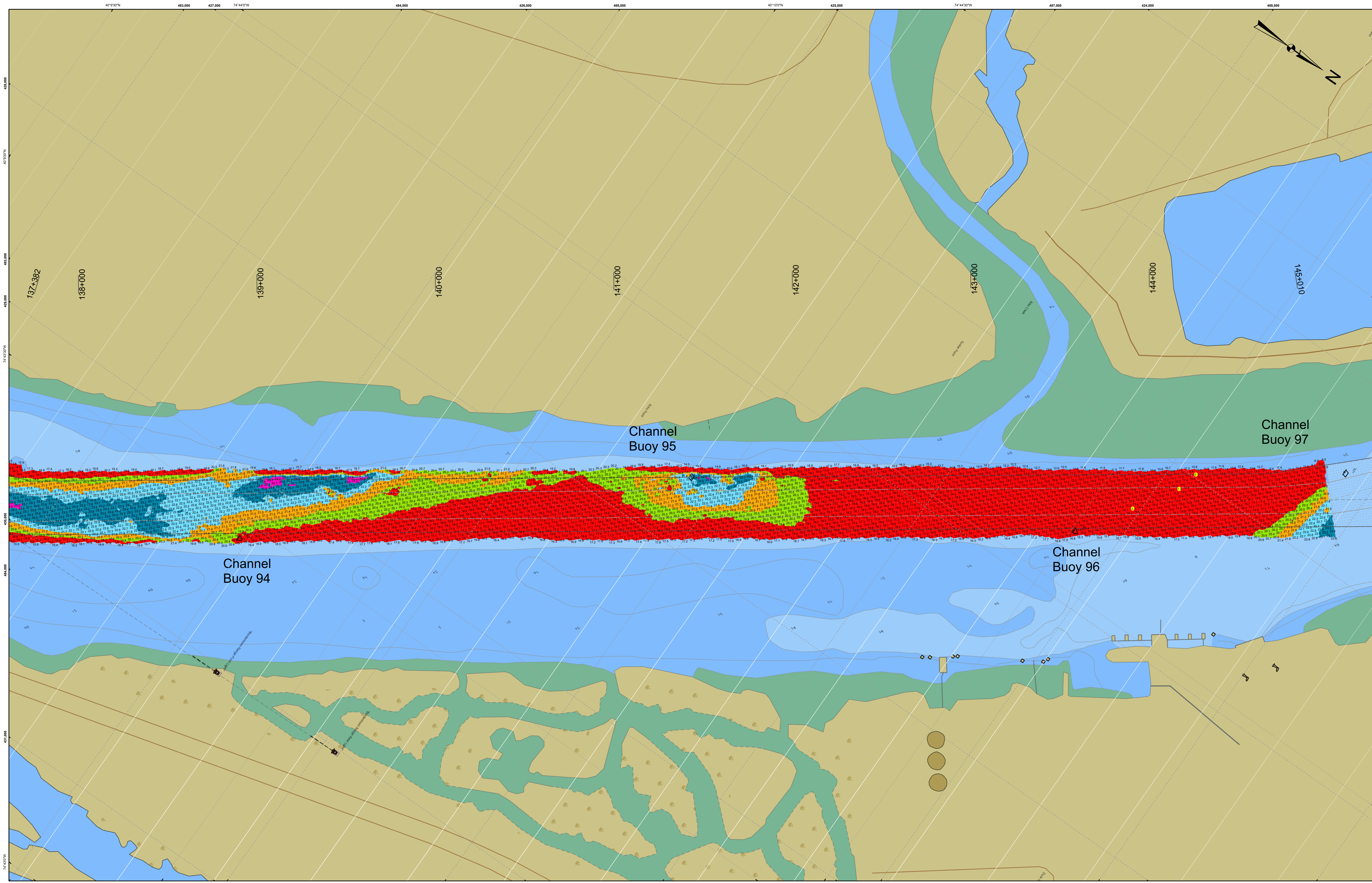


- THIS SURVEY MEETS STANDARDS AS OUTLINED IN CORPS OF ENGINEERS' HYDROGRAPHIC SURVEY MANUAL EM1110-2-1003, DATED NOVEMBER 30, 2013 FOR NAVIGATION AND DREDGING SUPPORT SURVEYS.
- HORIZONTAL REFERENCE - NAD 83, NEW JERSEY STATE PLANE, ZONE 2900, U.S. FOOT.
- VERTICAL REFERENCE - MEAN LOWER LOW WATER, WHICH IS BELOW N.A.V.D. 88 BY THE FOLLOWING:
 3.74' from STA. 125+692.79 to STA. 131+951.24
 3.75' from STA. 131+951.24 to STA. 133+440.76
 3.77' from STA. 133+440.76 to STA. 137+000
 3.80' from STA. 137+000 to STA. 143+000
 3.83' from STA. 143+000 to STA. 150+669.12
- GEOID 12B AND NOAA TIDAL EPOCH: 1983 - 2001 WERE USED. SOUNDINGS ARE EXPRESSED IN FEET AND TENTHS AND REFER TO MEAN LOWER LOW WATER.

- SOUNDINGS WERE SELECTED FOR PLOTTING PURPOSES ONLY, USING THE MINIMUM DEPTH WITHIN A 30'X30' CELL SHIFTED TO THE CELL CENTER.
- CONTOURS DEPICT ACTUAL LOCATION OF BATHYMETRY AND DO NOT NECESSARILY REFLECT PLOTTED SOUNDING LOCATIONS.
- CONTOURS WERE GENERATED USING THE MINIMUM DEPTH WITHIN A 15'X15' CELL.
- HYPACK, INC. SOFTWARE WAS USED TO PERFORM THE SOUNDING SELECTION AND CONTOUR GENERATION.
- THE INFORMATION DEPICTED ON THIS MAP REPRESENT THE RESULTS OF SURVEYS MADE ON THE DATES INDICATED AND CAN ONLY BE CONSIDERED AS INDICATING THE GENERAL CONDITIONS EXISTING AT THAT TIME.

- THE POSITIONS OF THE AIDS TO NAVIGATION ARE PROVIDED FOR INFORMATION ONLY, AND SHOULD NOT BE USED FOR NAVIGATION.
- THE LIMITS OF THE FEDERAL CHANNEL DEPICT THE MOST CURRENT CHANNEL FRAMEWORK AVAILABLE WHICH CAN ALSO BE DOWNLOADED HERE:
<http://navigation.usace.army.mil/Survey/Framework>
- BASE MAPPING LINEWORK OR ORTHOPHOTOGRAPHY HAS BEEN COMPILED FROM A VARIETY OF SOURCES AND DATES AND IS INTENDED TO PORTRAY GENERAL CHARACTERISTICS OF THE SHORELINE AND OTHER FEATURES. TEMPORAL CHANGES MAY HAVE OCCURRED SINCE THIS DATA SET WAS COLLECTED AND SOME PARTS OF THE DATA MAY NO LONGER BE AN ACCURATE REPRESENTATION OF THE SURFACE CONDITIONS.





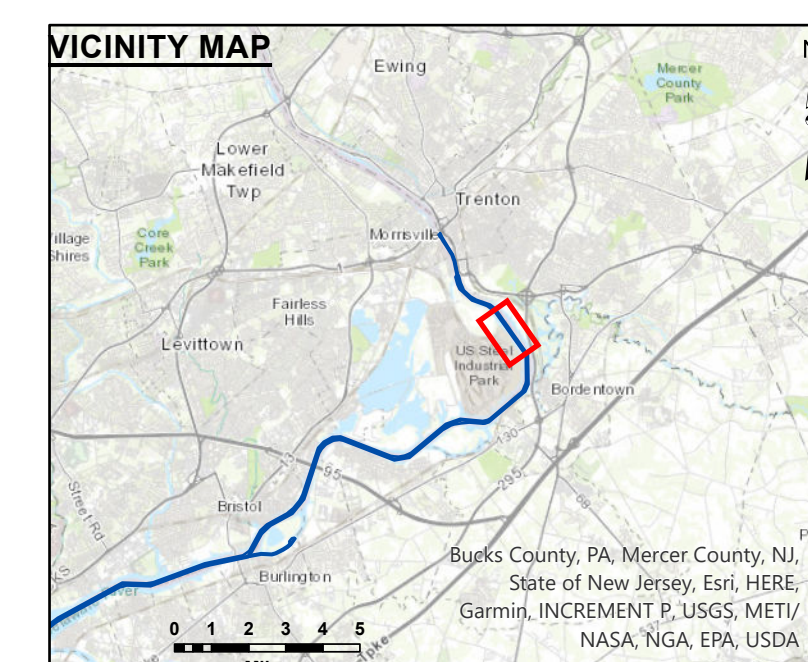
STA. 124+677 to STA. 125+693 -- 14 NOV 24
 STA. 125+693 to STA. 133+441 -- 18 NOV 24
 STA. 133+441 to STA. 145+010 -- 02 DEC 24

The accuracy of this map is the responsibility of the user. The government makes no representation or warranty, expressed or implied, including but not limited to, the accuracy, reliability, or completeness of the data provided. The government disclaims any liability for the use of this information, including but not limited to, any damage or injury resulting from its use.

U.S. ARMY CORPS OF ENGINEERS
 PHILADELPHIA DISTRICT
 Drawing No. _____
 Plot Scale _____
 Prepared By: E. Anthony
 Checked By: _____
 Approved: _____
 Date: _____

DELAWARE RIVER, PHILADELPHIA TO TRENTON
 BLAKE RANGE TO DUCK ISLAND RANGE
 EXAMINATION
 STA. 124+677 to STA. 145+010

E-PT-87



1. THIS SURVEY MEETS STANDARDS AS OUTLINED IN CORPS OF ENGINEERS' HYDROGRAPHIC SURVEY MANUAL EM1110-2-1003, DATED NOVEMBER 30, 2013 FOR NAVIGATION AND DREDGING SUPPORT SURVEYS.
2. HORIZONTAL REFERENCE - NAD 83, NEW JERSEY STATE PLANE, ZONE 2900, U.S. FOOT.
3. VERTICAL REFERENCE - MEAN LOWER LOW WATER, WHICH IS BELOW N.A.V.D. 88 BY THE FOLLOWING:
 3.74' from STA. 125+692.79 to STA. 131+951.24
 3.75' from STA. 131+951.24 to STA. 133+440.76
 3.77' from STA. 133+440.76 to STA. 137+000
 3.80' from STA. 137+000 to STA. 143+000
 3.83' from STA. 143+000 to STA. 150+669.12
4. GEOID 12B AND NOAA TIDAL EPOCH: 1983 - 2001 WERE USED. SOUNDINGS ARE EXPRESSED IN FEET AND TENTHS AND REFER TO MEAN LOWER LOW WATER.

5. SOUNDINGS WERE SELECTED FOR PLOTTING PURPOSES ONLY, USING THE MINIMUM DEPTH WITHIN A 30'X30' CELL SHIFTED TO THE CELL CENTER.
6. CONTOURS DEPICT ACTUAL LOCATION OF BATHYMETRY AND DO NOT NECESSARILY REFLECT PLOTTED SOUNDING LOCATIONS.
7. CONTOURS WERE GENERATED USING THE MINIMUM DEPTH WITHIN A 15'X15' CELL.
8. HYPACK, INC. SOFTWARE WAS USED TO PERFORM THE SOUNDING SELECTION AND CONTOUR GENERATION.
9. THE INFORMATION DEPICTED ON THIS MAP REPRESENT THE RESULTS OF SURVEYS MADE ON THE DATES INDICATED AND CAN ONLY BE CONSIDERED AS INDICATING THE GENERAL CONDITIONS EXISTING AT THAT TIME.

10. THE POSITIONS OF THE AIDS TO NAVIGATION ARE PROVIDED FOR INFORMATION ONLY, AND SHOULD NOT BE USED FOR NAVIGATION.
11. THE LIMITS OF THE FEDERAL CHANNEL FRAMEWORK AVAILABLE WHICH CAN ALSO BE DOWNLOADED HERE:
<http://navigation.usace.army.mil/Survey/Framework>
12. BASE MAPPING LINEWORK OR ORTHOPHOTOGRAPHY HAS BEEN COMPILED FROM A VARIETY OF SOURCES AND DATES AND IS INTENDED TO PORTRAY GENERAL CHARACTERISTICS OF THE SHORELINE AND OTHER FEATURES. TEMPORAL CHANGES MAY HAVE OCCURRED SINCE THIS DATA SET WAS COLLECTED AND SOME PARTS OF THE DATA MAY NO LONGER BE AN ACCURATE REPRESENTATION OF THE SURFACE CONDITIONS.

