

STA. 102+178 to STA. 112+431 -- 05 NOV 24  
 STA. 108+500 to STA. 111+000 -- 12 NOV 24  
 STA. 112+000 to STA. 116+000 -- 21 NOV 24  
 STA. 112+431 to STA. 119+401 -- 06 NOV 24  
 STA. 116+000 to STA. 119+000 -- 26 NOV 24  
 STA. 119+401 to STA. 124+677 -- 12 NOV 24  
 STA. 122+500 to STA. 123+000 -- 04 DEC 24

**NOT A NAVIGATIONAL AID**  
 This data is provided for general information only. It is not intended to be used for navigation. The Corps of Engineers does not warrant the accuracy of the data. The Corps of Engineers does not assume any liability for the use of this data. The Corps of Engineers does not assume any liability for the use of this data. The Corps of Engineers does not assume any liability for the use of this data.

Surveyed By: \_\_\_\_\_  
 PHILADELPHIA DISTRICT  
 Planned By: E. Anthony  
 Checked By: \_\_\_\_\_  
 Approved: \_\_\_\_\_  
 Date: \_\_\_\_\_

**DELAWARE RIVER, PHILADELPHIA TO TRENTON  
 FLORENCE TO NEWBOLD RANGE  
 EXAMINATION  
 STA. 102+000 to STA. 124+677**

E-PT-88

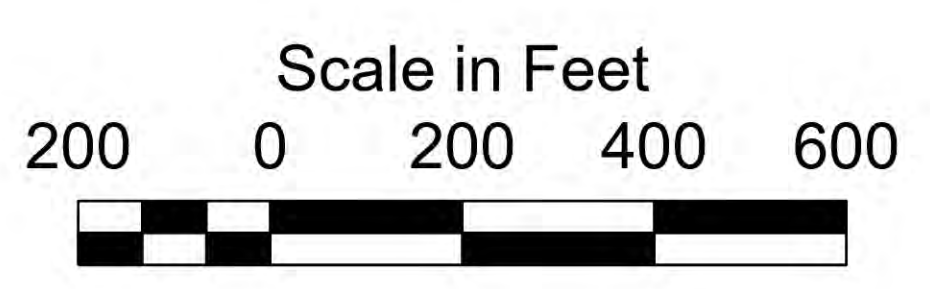


1. THIS SURVEY MEETS STANDARDS AS OUTLINED IN CORPS OF ENGINEERS' HYDROGRAPHIC SURVEY MANUAL EM1110-2-1003, DATED NOVEMBER 30, 2013 FOR NAVIGATION AND DREDGING SUPPORT SURVEYS.
2. HORIZONTAL REFERENCE - NAD 83, NEW JERSEY STATE PLANE, ZONE 2900, U.S. FOOT.
3. VERTICAL REFERENCE - MEAN LOWER LOW WATER, WHICH IS BELOW N.A.V.D. 88 BY THE FOLLOWING:  
 3.39' from STA. 98+471.25 to STA. 105+000  
 3.43' from STA. 105+000 to STA. 110+344.53  
 3.48' from STA. 110+344.53 to STA. 112+430.94  
 3.51' from STA. 112+430.94 to STA. 119+000  
 3.60' from STA. 119+000 to STA. 125+692.79
4. GEOID 12B AND NOAA TIDAL EPOCH: 1983 - 2001 WERE USED. SOUNDINGS ARE EXPRESSED IN FEET AND TENTHS AND REFER TO MEAN LOWER LOW WATER.

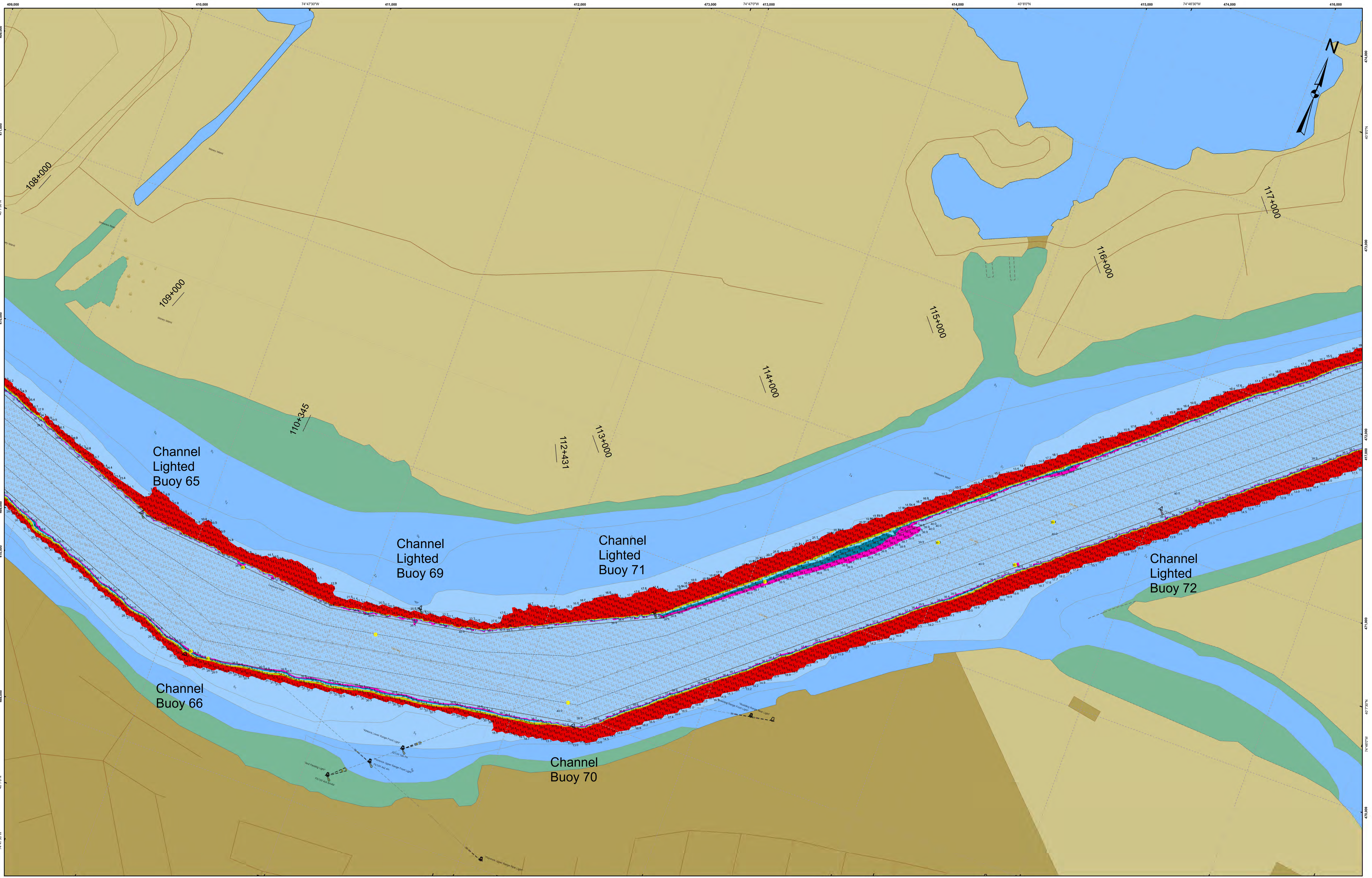
5. SOUNDINGS WERE SELECTED FOR PLOTTING PURPOSES ONLY, USING THE MINIMUM DEPTH WITHIN A 30'X30' CELL SHIFTED TO THE CELL CENTER.
6. CONTOURS DEPICT ACTUAL LOCATION OF BATHYMETRY AND DO NOT NECESSARILY REFLECT PLOTTED SOUNDING LOCATIONS.
7. CONTOURS WERE GENERATED USING THE MINIMUM DEPTH WITHIN A 15'X15' CELL.
8. HYPACK, INC. SOFTWARE WAS USED TO PERFORM THE SOUNDING SELECTION AND CONTOUR GENERATION.
9. THE INFORMATION DEPICTED ON THIS MAP REPRESENT THE RESULTS OF SURVEYS MADE ON THE DATES INDICATED AND CAN ONLY BE CONSIDERED AS INDICATING THE GENERAL CONDITIONS EXISTING AT THAT TIME.

10. THE POSITIONS OF THE AIDS TO NAVIGATION ARE PROVIDED FOR INFORMATION ONLY, AND SHOULD NOT BE USED FOR NAVIGATION.
11. THE LIMITS OF THE FEDERAL CHANNEL DEPICT THE MOST CURRENT CHANNEL FRAMEWORK AVAILABLE WHICH CAN ALSO BE DOWNLOADED HERE:  
<http://navigation.usace.army.mil/Survey/Framework>

12. BASE MAPPING LINEWORK OR ORTHOPHOTOGRAPHY HAS BEEN COMPILED FROM A VARIETY OF SOURCES AND DATES AND IS INTENDED TO PORTRAY GENERAL CHARACTERISTICS OF THE SHORELINE AND OTHER FEATURES. TEMPORAL CHANGES MAY HAVE OCCURRED SINCE THIS DATA SET WAS COLLECTED AND SOME PARTS OF THE DATA MAY NO LONGER BE AN ACCURATE REPRESENTATION OF THE SURFACE CONDITIONS.



- Shoalest Sounding per Quarter 40 - 56.3
- CenterLine 39 - 40
- ToeLine 38 - 39
- QuarterLine 37 - 38
- 36 - 37
- 35 - 36
- 6.27 - 35



STA. 102+178 to STA. 112+431 -- 05 NOV 24  
 STA. 09+500 to STA. 111+000 -- 12 NOV 24  
 STA. 112+000 to STA. 116+000 -- 21 NOV 24  
 STA. 112+431 to STA. 119+401 -- 06 NOV 24  
 STA. 116+000 to STA. 119+000 -- 26 NOV 24  
 STA. 119+401 to STA. 124+677 -- 12 NOV 24  
 STA. 122+500 to STA. 123+000 -- 04 DEC 24

**DISCLAIMER:**  
 This data is provided for general information only. It is not intended for use in navigation. The government disclaims any liability for the use of this data for purposes other than those intended. The government disclaims any liability for any damages suffered as a result of using, modifying, or distributing this information.

U.S. ARMY CORPS OF ENGINEERS  
 PHILADELPHIA DISTRICT  
 Drawing No. \_\_\_\_\_  
 Project No. \_\_\_\_\_  
 Field Scale \_\_\_\_\_  
 Approved: \_\_\_\_\_  
 Checked By: \_\_\_\_\_  
 E. Anthony

DELAWARE RIVER, PHILADELPHIA TO TRENTON  
 FLORENCE TO NEWBOLD RANGE  
 EXAMINATION  
 STA. 102+000 to STA. 124+677

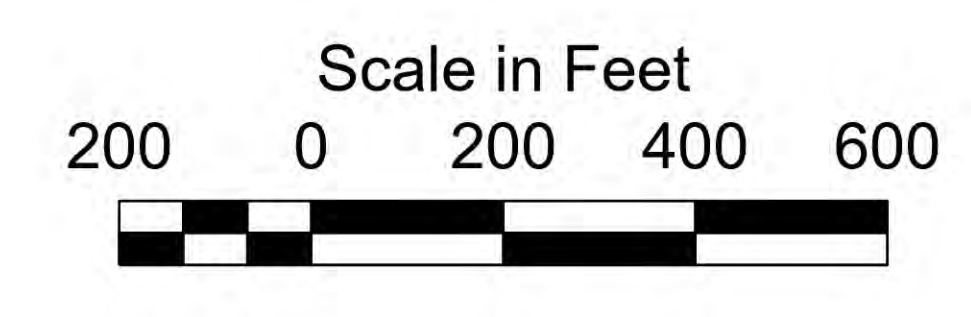
E-PT-88



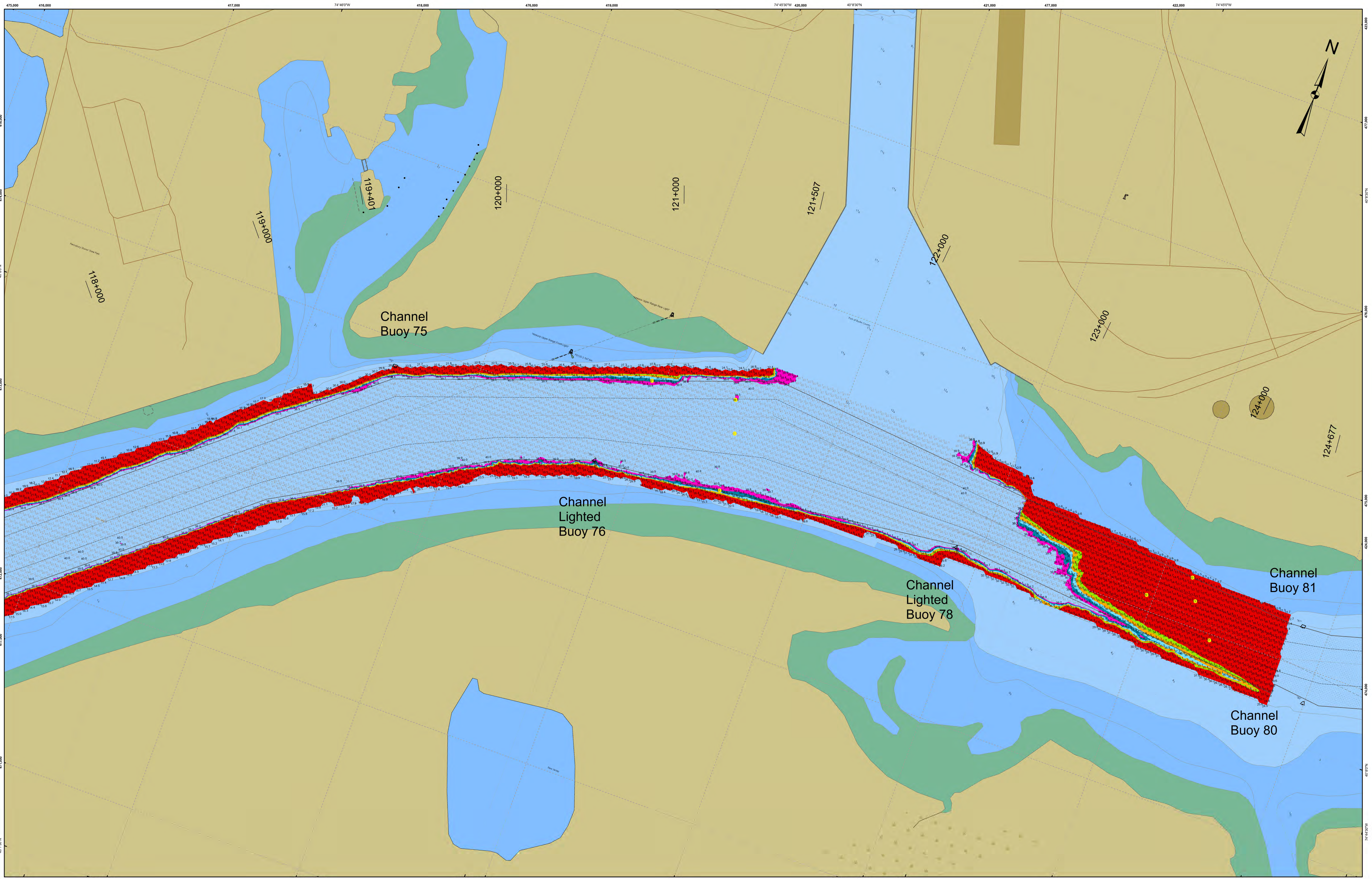
1. THIS SURVEY MEETS STANDARDS AS OUTLINED IN CORPS OF ENGINEERS' HYDROGRAPHIC SURVEY MANUAL EM1110-2-1003, DATED NOVEMBER 30, 2013 FOR NAVIGATION AND DREDGING SUPPORT SURVEYS.
2. HORIZONTAL REFERENCE - NAD 83, NEW JERSEY STATE PLANE, ZONE 2900, U.S. FOOT.
3. VERTICAL REFERENCE - MEAN LOWER LOW WATER, WHICH IS BELOW N.A.V.D. 88 BY THE FOLLOWING:  
 3.39' from STA. 98+471.25 to STA. 105+000  
 3.43' from STA. 105+000 to STA. 110+344.53  
 3.48' from STA. 110+344.53 to STA. 112+430.94  
 3.51' from STA. 112+430.94 to STA. 119+000  
 3.60' from STA. 119+000 to STA. 125+692.79
4. GEOID 12B AND NOAA TIDAL EPOCH: 1983 - 2001 WERE USED. SOUNDINGS ARE EXPRESSED IN FEET AND TENTHS AND REFER TO MEAN LOWER LOW WATER.

5. SOUNDINGS WERE SELECTED FOR PLOTTING PURPOSES ONLY, USING THE MINIMUM DEPTH WITHIN A 30'X30' CELL SHIFTED TO THE CELL CENTER.
6. CONTOURS DEPICT ACTUAL LOCATION OF BATHYMETRY AND DO NOT NECESSARILY REFLECT PLOTTED SOUNDING LOCATIONS.
7. CONTOURS WERE GENERATED USING THE MINIMUM DEPTH WITHIN A 15'X15' CELL.
8. HYPACK, INC. SOFTWARE WAS USED TO PERFORM THE SOUNDING SELECTION AND CONTOUR GENERATION.
9. THE INFORMATION DEPICTED ON THIS MAP REPRESENT THE RESULTS OF SURVEYS MADE ON THE DATES INDICATED AND CAN ONLY BE CONSIDERED AS INDICATING THE GENERAL CONDITIONS EXISTING AT THAT TIME.

10. THE POSITIONS OF THE AIDS TO NAVIGATION ARE PROVIDED FOR INFORMATION ONLY, AND SHOULD NOT BE USED FOR NAVIGATION.
11. THE LIMITS OF THE FEDERAL CHANNEL DEPICT THE MOST CURRENT CHANNEL FRAMEWORK AVAILABLE WHICH CAN ALSO BE DOWNLOADED HERE:  
<http://navigation.usace.army.mil/Survey/Framework>
12. BASE MAPPING LINEWORK OR ORTHOPHOTOGRAPHY HAS BEEN COMPILED FROM A VARIETY OF SOURCES AND DATES AND IS INTENDED TO PORTRAY GENERAL CHARACTERISTICS OF THE SHORELINE AND OTHER FEATURES. TEMPORAL CHANGES MAY HAVE OCCURRED SINCE THIS DATA SET WAS COLLECTED AND SOME PARTS OF THE DATA MAY NO LONGER BE AN ACCURATE REPRESENTATION OF THE SURFACE CONDITIONS.



- Shoalest Sounding per Quarter 40 - 56.3
- CenterLine 39 - 40
- ToeLine 38 - 39
- QuarterLine 37 - 38
- 36 - 37
- 35 - 36
- 6.27 - 35



STA. 102+178 to STA. 112+431 -- 05 NOV 24  
 STA. 08+500 to STA. 111+000 -- 12 NOV 24  
 STA. 112+000 to STA. 116+000 -- 21 NOV 24  
 STA. 112+431 to STA. 119+401 -- 06 NOV 24  
 STA. 116+000 to STA. 119+000 -- 26 NOV 24  
 STA. 119+401 to STA. 124+677 -- 12 NOV 24  
 STA. 122+500 to STA. 123+000 -- 04 DEC 24

**NOT A NAVIGATIONAL AID**  
 This data is provided for general information only. It is not intended to be used for navigation. The Corps of Engineers does not warrant the accuracy or completeness of the data provided. The government disclaims any liability for the use of this data for any purpose other than that for which it was collected. The government disclaims any liability for any damages suffered as a result of using, modifying, or attempting to use this information.

Surveyed By:	E. Anthony
Checked By:	E. Anthony
Drawn By:	E. Anthony
Field Scale:	1" = 100'
Agency:	CH2M Hill

**DELAWARE RIVER, PHILADELPHIA TO TRENTON  
 FLORENCE TO NEWBOLD RANGE  
 EXAMINATION  
 STA. 102+000 to STA. 124+677**

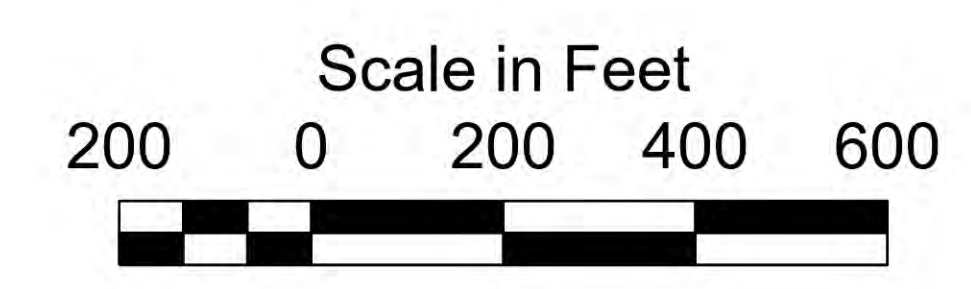
E-PT-88



- THIS SURVEY MEETS STANDARDS AS OUTLINED IN CORPS OF ENGINEERS' HYDROGRAPHIC SURVEY MANUAL EM1110-2-1003, DATED NOVEMBER 30, 2013 FOR NAVIGATION AND DREDGING SUPPORT SURVEYS.
- HORIZONTAL REFERENCE - NAD 83, NEW JERSEY STATE PLANE, ZONE 2900, U.S. FOOT.
- VERTICAL REFERENCE - MEAN LOWER LOW WATER, WHICH IS BELOW N.A.V.D. 88 BY THE FOLLOWING:  
 3.39' from STA. 98+471.25 to STA. 105+000  
 3.43' from STA. 105+000 to STA. 110+344.53  
 3.48' from STA. 110+344.53 to STA. 112+430.94  
 3.51' from STA. 112+430.94 to STA. 119+000  
 3.60' from STA. 119+000 to STA. 125+692.79
- GEOID 12B AND NOAA TIDAL EPOCH: 1983 - 2001 WERE USED. SOUNDINGS ARE EXPRESSED IN FEET AND TENTHS AND REFER TO MEAN LOWER LOW WATER.

- SOUNDINGS WERE SELECTED FOR PLOTTING PURPOSES ONLY, USING THE MINIMUM DEPTH WITHIN A 30'X30' CELL SHIFTED TO THE CELL CENTER.
- CONTOURS DEPICT ACTUAL LOCATION OF BATHYMETRY AND DO NOT NECESSARILY REFLECT PLOTTED SOUNDING LOCATIONS.
- CONTOURS WERE GENERATED USING THE MINIMUM DEPTH WITHIN A 15'X15' CELL.
- HYPACK, INC. SOFTWARE WAS USED TO PERFORM THE SOUNDING SELECTION AND CONTOUR GENERATION.
- THE INFORMATION DEPICTED ON THIS MAP REPRESENT THE RESULTS OF SURVEYS MADE ON THE DATES INDICATED AND CAN ONLY BE CONSIDERED AS INDICATING THE GENERAL CONDITIONS EXISTING AT THAT TIME.

- THE POSITIONS OF THE AIDS TO NAVIGATION ARE PROVIDED FOR INFORMATION ONLY, AND SHOULD NOT BE USED FOR NAVIGATION.
- THE LIMITS OF THE FEDERAL CHANNEL DEPICT THE MOST CURRENT CHANNEL FRAMEWORK AVAILABLE WHICH CAN ALSO BE DOWNLOADED HERE:  
<http://navigation.usace.army.mil/Survey/Framework>
- BASE MAPPING LINEWORK OR ORTHOPHOTOGRAPHY HAS BEEN COMPILED FROM A VARIETY OF SOURCES AND DATES AND IS INTENDED TO PORTRAY GENERAL CHARACTERISTICS OF THE SHORELINE AND OTHER FEATURES. TEMPORAL CHANGES MAY HAVE OCCURRED SINCE THIS DATA SET WAS COLLECTED AND SOME PARTS OF THE DATA MAY NO LONGER BE AN ACCURATE REPRESENTATION OF THE SURFACE CONDITIONS.



Shoalest Sounding per Quarter	40 - 56.3
CenterLine	39 - 40
ToeLine	37 - 38
QuarterLine	36 - 37
	35 - 36
	6.27 - 35