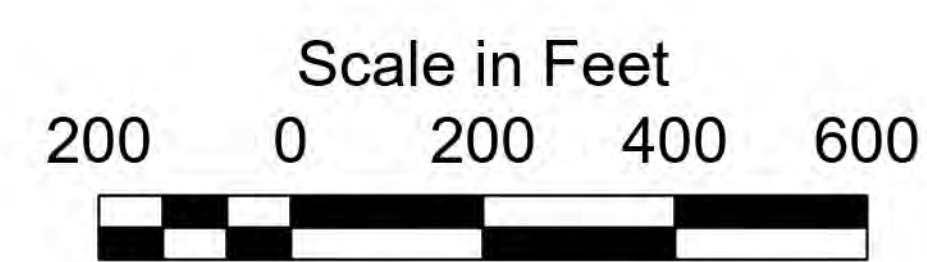


1. THIS SURVEY MEETS STANDARDS AS OUTLINED IN CORPS OF ENGINEERS' HYDROGRAPHIC SURVEY MANUAL EM1110-2-1003, DATED NOVEMBER 30, 2013 FOR NAVIGATION AND DREDGING SUPPORT SURVEYS.
2. HORIZONTAL REFERENCE - NAD 83, NEW JERSEY STATE PLANE, ZONE 2900, U.S. FOOT.
3. VERTICAL REFERENCE - MEAN LOWER LOW WATER, WHICH IS BELOW N.A.V.D. 88 BY THE FOLLOWING:
 3.21' from STA. 0+000 to STA. 6+138.54
 3.20' from STA. 6+138.54 to STA. 10+651.37
 3.19' from STA. 10+651.37 to STA. 79+508.34
4. GEOID 09 AND NOAA TIDAL EPOCH: 1983 - 2001 WERE USED. SOUNDINGS ARE EXPRESSED IN FEET AND TENTHS AND REFER TO MEAN LOWER LOW WATER.
5. SOUNDINGS WERE SELECTED FOR PLOTTING PURPOSES ONLY, USING THE MINIMUM DEPTH WITHIN A 30'X30' CELL SHIFTED TO THE CELL CENTER.

6. CONTOURS DEPICT ACTUAL LOCATION OF BATHYMETRY AND DO NOT NECESSARILY REFLECT PLOTTED SOUNDING LOCATIONS.
7. CONTOURS WERE GENERATED USING THE MINIMUM DEPTH WITHIN A 15'X15' CELL.
8. HYPACK, INC. SOFTWARE WAS USED TO PERFORM THE SOUNDING SELECTION AND CONTOUR GENERATION.
9. THE INFORMATION DEPICTED ON THIS MAP REPRESENT THE RESULTS OF SURVEYS MADE ON THE DATES INDICATED AND CAN ONLY BE CONSIDERED AS INDICATING THE GENERAL CONDITIONS EXISTING AT THAT TIME.

10. THE POSITIONS OF THE AIDS TO NAVIGATION ARE PROVIDED FOR INFORMATION ONLY, AND SHOULD NOT BE USED FOR NAVIGATION.
11. THE LIMITS OF THE FEDERAL CHANNEL DEPICT THE MOST CURRENT CHANNEL FRAMEWORK AVAILABLE WHICH CAN ALSO BE DOWNLOADED HERE:
<http://navigation.usace.army.mil/Survey/Framework>
12. BASE MAPPING LINWORK OR ORTHOPHOTOGRAPHY HAS BEEN COMPILED FROM A VARIETY OF SOURCES AND DATES AND IS INTENDED TO PORTRAY GENERAL CHARACTERISTICS OF THE SHORELINE AND OTHER FEATURES. TEMPORAL CHANGES MAY HAVE OCCURRED SINCE THIS DATA SET WAS COLLECTED AND SOME PARTS OF THE DATA MAY NO LONGER BE AN ACCURATE REPRESENTATION OF THE SURFACE CONDITIONS.



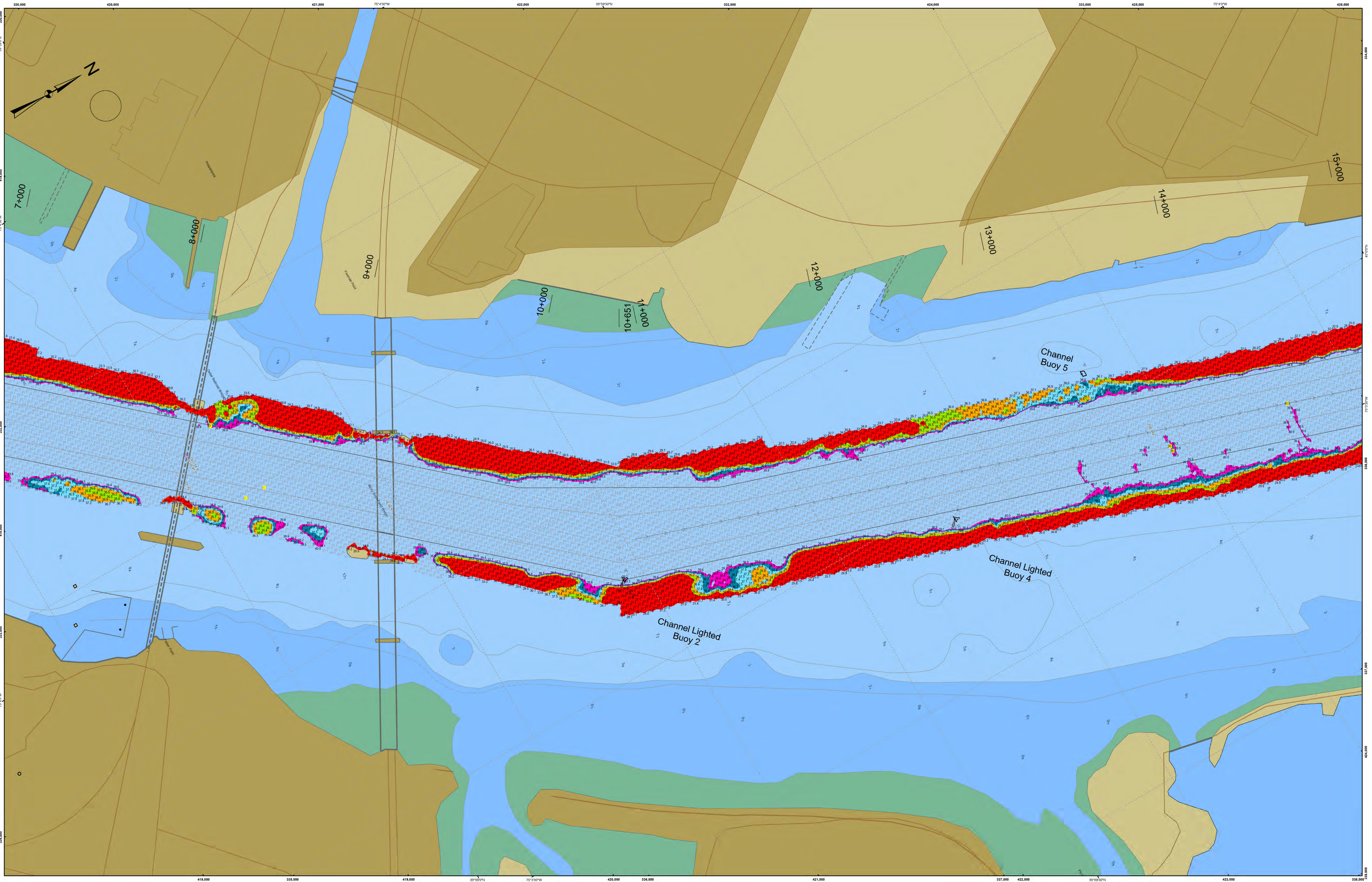
- Shoalest Sounding per Quarter
- CenterLine
- ToeLine
- QuarterLine
- StationLine
- 40 - 53.08
- 39 - 40
- 38 - 39
- 37 - 38
- 36 - 37
- 35 - 36
- 11.15 - 35

STA. 0+000 to STA. 4+375 - 17 MAR 25
 STA. 4+375 to STA. 10+651.37 - 10 MAR 25
 STA. 10+651.37 to STA. 18+478 - 20 MAR 25

DISCLAIMER
 The data is provided for general information only. It is not intended to be used for navigation. The data is provided as a service to the public and is not intended to be used for navigation. The data is provided as a service to the public and is not intended to be used for navigation. The data is provided as a service to the public and is not intended to be used for navigation.

U.S. ARMY CORPS OF ENGINEERS
 PHILADELPHIA DISTRICT
 Surveyed By: _____
 Plotted By: _____
 E. Anthony
 Checked By: _____
 Approved: _____
 Chief Survey Section

DELAWARE RIVER, PHILADELPHIA TO TRENTON HARBOR RANGE TO BRIDEBURG RANGE EXAMINATION
 STA. 0+000 to STA. 18+478



STA. 0+000 to STA. 4+975 - 17 MAR 25
 STA. 4+225 to STA. 10+651 - 19 MAR 25
 STA. 10+651 to STA. 18+478 - 20 MAR 25

DISCLAIMER
 The data is provided for general information only. The government makes no representation or warranty, expressed or implied, including but not limited to, accuracy, reliability, or completeness of the data provided. The government assumes no liability for the use of the data for purposes other than those intended. The government reserves the right to change the data without notice and without liability for damages or other consequences.

U.S. ARMY CORPS OF ENGINEERS
 PHILADELPHIA DISTRICT
 Drawing No. _____
 Plot Scale _____
 Approved: _____
 Checked By: _____

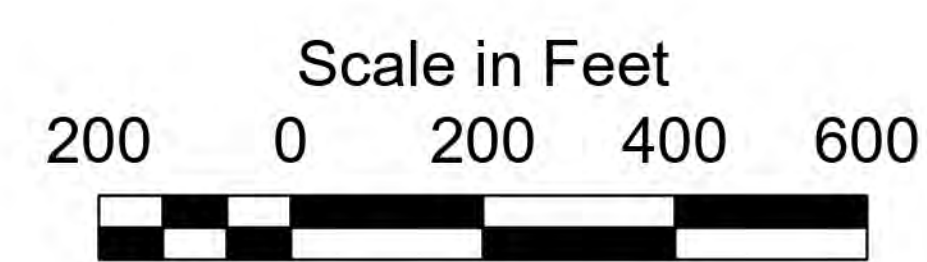
DELAWARE RIVER, PHILADELPHIA TO TRENTON
 HARBOR RANGE TO BRIDESTBURG RANGE
 EXAMINATION
 STA. 0+000 to STA. 18+478



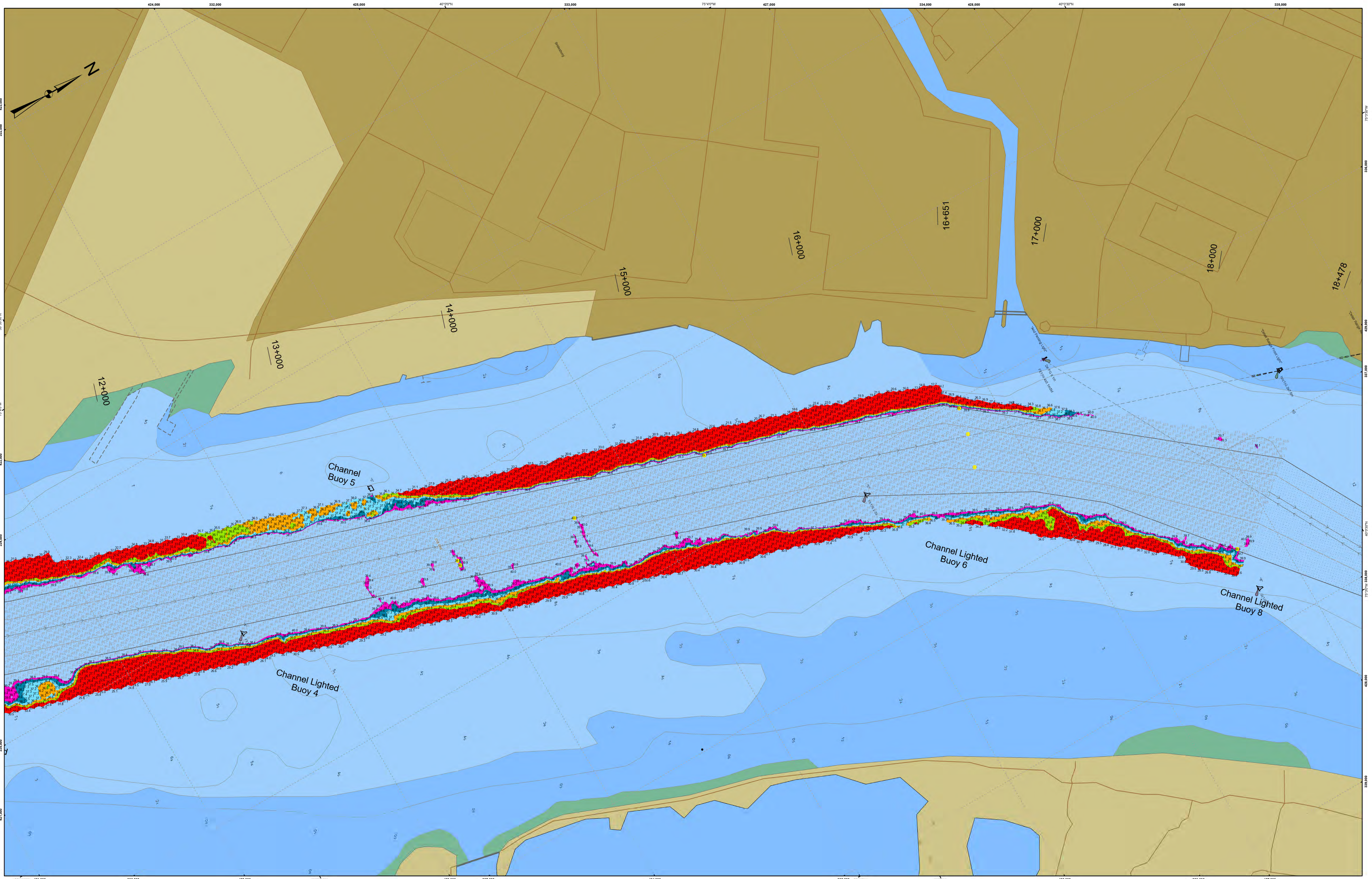
- THIS SURVEY MEETS STANDARDS AS OUTLINED IN CORPS OF ENGINEERS' HYDROGRAPHIC SURVEY MANUAL EM1110-2-1003, DATED NOVEMBER 30, 2013 FOR NAVIGATION AND DREDGING SUPPORT SURVEYS.
- HORIZONTAL REFERENCE - NAD 83, NEW JERSEY STATE PLANE, ZONE 2900, U.S. FOOT.
- VERTICAL REFERENCE - MEAN LOWER LOW WATER, WHICH IS BELOW N.A.V.D. 88 BY THE FOLLOWING:
 3.21' from STA. 0+000 to STA. 6+138.54
 3.20' from STA. 6+138.54 to STA. 10+651.37
 3.19' from STA. 10+651.37 to STA. 79+508.34
- GEOID 09 AND NOAA TIDAL EPOCH: 1983 - 2001 WERE USED. SOUNDINGS ARE EXPRESSED IN FEET AND TENTHS AND REFER TO MEAN LOWER LOW WATER.
- SOUNDINGS WERE SELECTED FOR PLOTTING PURPOSES ONLY, USING THE MINIMUM DEPTH WITHIN A 30'X30' CELL SHIFTED TO THE CELL CENTER.

- CONTOURS DEPICT ACTUAL LOCATION OF BATHYMETRY AND DO NOT NECESSARILY REFLECT PLOTTED SOUNDING LOCATIONS.
- CONTOURS WERE GENERATED USING THE MINIMUM DEPTH WITHIN A 15'X15' CELL.
- HYPACK, INC. SOFTWARE WAS USED TO PERFORM THE SOUNDING SELECTION AND CONTOUR GENERATION.
- THE INFORMATION DEPICTED ON THIS MAP REPRESENT THE RESULTS OF SURVEYS MADE ON THE DATES INDICATED AND CAN ONLY BE CONSIDERED AS INDICATING THE GENERAL CONDITIONS EXISTING AT THAT TIME.

- THE POSITIONS OF THE AIDS TO NAVIGATION ARE PROVIDED FOR INFORMATION ONLY, AND SHOULD NOT BE USED FOR NAVIGATION.
- THE LIMITS OF THE FEDERAL CHANNEL DEPICT THE MOST CURRENT CHANNEL FRAMEWORK AVAILABLE WHICH CAN ALSO BE DOWNLOADED HERE:
<http://navigation.usace.army.mil/Survey/Framework>
- BASE MAPPING LINEWORK OR ORTHOPHOTOGRAPHY HAS BEEN COMPILED FROM A VARIETY OF SOURCES AND DATES AND IS INTENDED TO PORTRAY GENERAL CHARACTERISTICS OF THE SHORELINE AND OTHER FEATURES. TEMPORAL CHANGES MAY HAVE OCCURRED SINCE THIS DATA SET WAS COLLECTED AND SOME PARTS OF THE DATA MAY NO LONGER BE AN ACCURATE REPRESENTATION OF THE SURFACE CONDITIONS.



- Shoalest Sounding per Quarter
- CenterLine
- ToeLine
- QuarterLine
- StationLine
- 40 - 53.08
- 39 - 40
- 38 - 39
- 37 - 38
- 36 - 37
- 35 - 36
- 11.15 - 35



STA. 0+000 to STA. 4+975 - 17 MAR 25
 STA. 4+225 to STA. 10+651 - 10 MAR 25
 STA. 10+651 to STA. 18+478 - 20 MAR 25

DISCLAIMER
 This data is provided for general information only. It is not intended for use in navigation. The user assumes all responsibility for the accuracy and completeness of the data provided. The government makes no warranty, guarantee, or representation as to the accuracy or completeness of the data provided. The government assumes no liability for the use of this data for purposes other than those intended by the government.

U.S. ARMY CORPS OF ENGINEERS
 PHILADELPHIA DISTRICT
 Surveyed By: _____
 Produced By: E. Anthony
 Checked By: _____
 Approved: _____
 Chief, Survey Section

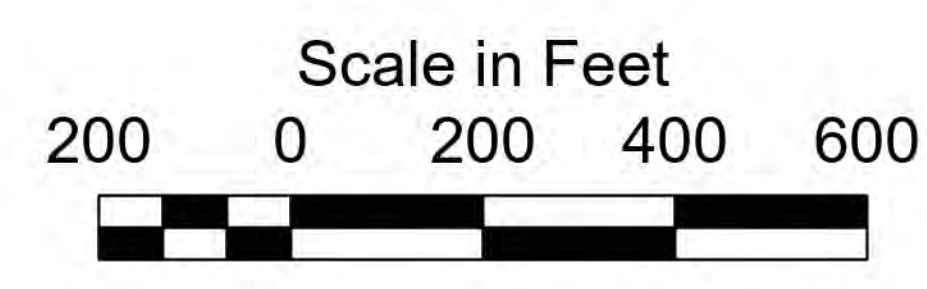
DELAWARE RIVER, PHILADELPHIA TO TRENTON
 HARBOR RANGE TO BRIDESTBURG RANGE
 EXAMINATION
 STA. 0+000 to STA. 18+478



1. THIS SURVEY MEETS STANDARDS AS OUTLINED IN CORPS OF ENGINEERS' HYDROGRAPHIC SURVEY MANUAL EM1110-2-1003, DATED NOVEMBER 30, 2013 FOR NAVIGATION AND DREDGING SUPPORT SURVEYS.
2. HORIZONTAL REFERENCE - NAD 83, NEW JERSEY STATE PLANE, ZONE 2900, U.S. FOOT.
3. VERTICAL REFERENCE - MEAN LOWER LOW WATER, WHICH IS BELOW N.A.V.D. 88 BY THE FOLLOWING:
 3.21' from STA. 0+000 to STA. 6+138.54
 3.20' from STA. 6+138.54 to STA. 10+651.37
 3.19' from STA. 10+651.37 to STA. 79+508.34
4. GEOID 09 AND NOAA TIDAL EPOCH: 1983 - 2001 WERE USED. SOUNDINGS ARE EXPRESSED IN FEET AND TENTHS AND REFER TO MEAN LOWER LOW WATER.
5. SOUNDINGS WERE SELECTED FOR PLOTTING PURPOSES ONLY, USING THE MINIMUM DEPTH WITHIN A 30'X30' CELL SHIFTED TO THE CELL CENTER.

6. CONTOURS DEPICT ACTUAL LOCATION OF BATHYMETRY AND DO NOT NECESSARILY REFLECT PLOTTED SOUNDING LOCATIONS.
7. CONTOURS WERE GENERATED USING THE MINIMUM DEPTH WITHIN A 15'X15' CELL.
8. HYPACK, INC. SOFTWARE WAS USED TO PERFORM THE SOUNDING SELECTION AND CONTOUR GENERATION.
9. THE INFORMATION DEPICTED ON THIS MAP REPRESENT THE RESULTS OF SURVEYS MADE ON THE DATES INDICATED AND CAN ONLY BE CONSIDERED AS INDICATING THE GENERAL CONDITIONS EXISTING AT THAT TIME.

10. THE POSITIONS OF THE AIDS TO NAVIGATION ARE PROVIDED FOR INFORMATION ONLY, AND SHOULD NOT BE USED FOR NAVIGATION.
11. THE LIMITS OF THE FEDERAL CHANNEL DEPICT THE MOST CURRENT CHANNEL FRAMEWORK AVAILABLE WHICH CAN ALSO BE DOWNLOADED HERE:
<http://navigation.usace.army.mil/Survey/Framework>
12. BASE MAPPING LINWORK OR ORTHOPHOTOGRAPHY HAS BEEN COMPILED FROM A VARIETY OF SOURCES AND DATES AND IS INTENDED TO PORTRAY GENERAL CHARACTERISTICS OF THE SHORELINE AND OTHER FEATURES. TEMPORAL CHANGES MAY HAVE OCCURRED SINCE THIS DATA SET WAS COLLECTED AND SOME PARTS OF THE DATA MAY NO LONGER BE AN ACCURATE REPRESENTATION OF THE SURFACE CONDITIONS.



- Shoalest Sounding per Quarter
- CenterLine
- ToeLine
- QuarterLine
- StationLine
- 40 - 53.08
- 39 - 40
- 38 - 39
- 37 - 38
- 36 - 37
- 35 - 36
- 11.15 - 35