

**U.S. Army Corps of Engineers,
Philadelphia District, Northern Area
PHOTO CONTEST 2023 CALENDAR**



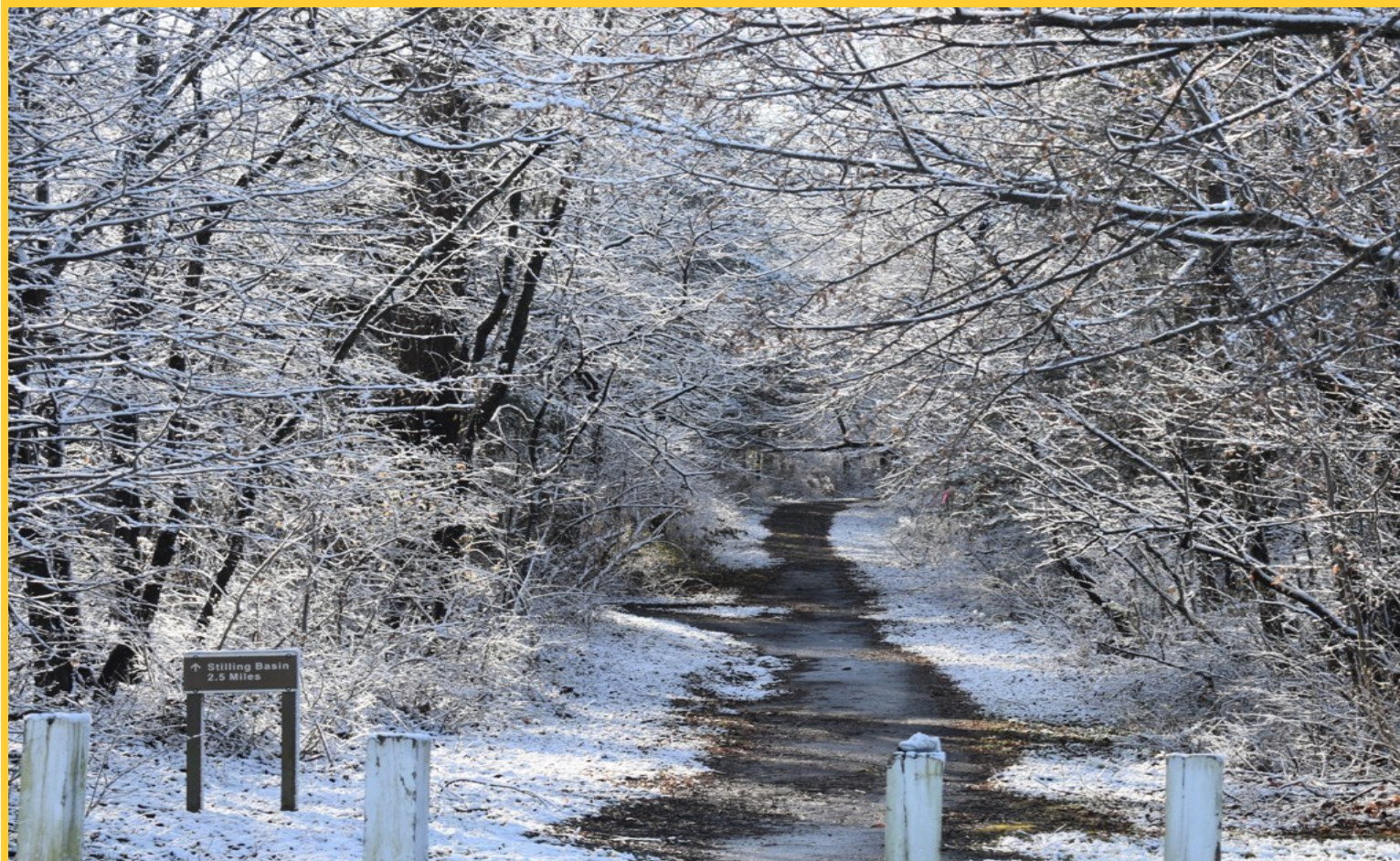
Winner Overall, *Red Skies*, Blue Marsh Lake, Photo by Carol Cole

In 2022, the U.S. Army Corps of Engineers Philadelphia District ran a social media based photo contest for the public. Participants were encouraged to submit their best photos of the District's 5 dams in Eastern Pennsylvania: Blue Marsh Lake, Beltzville Dam, Francis E. Water Dam, Prompton Dam, General Edgar Jadwin Dam and adjacent state park areas. Participants from across the region submitted photos. Then, the District invited the public to vote for their favorite photographs from each season.

We are pleased to present this downloadable calendar featuring the top 12 images. Thank you to all of the talented photographers for submitting photos and to the participants who voted!



**US Army Corps
of Engineers®**
Philadelphia District



January 2023

The Blue Marsh Lake Trail is a 30 mile trail that circumnavigates the Blue Marsh Lake Reservoir providing year-round enjoyment for visitors.

Sun	Mon	Tue	Wed	Thu	Fri	Sat
1 New Year's Day Kwanzaa Ends	2	3	4	5 National Bird Day	6	7
8	9	10	11	12	13	14
15 Chinese New Year	16 Martin Luther King Jr. Day	17	18	19	20	21 National Squirrel Appreciation Day
22	23	24	25	26	27	28
29	30	31				

Winter Category, Trails at Blue Marsh, Blue Marsh Lake, Photo by Sally Copeland



March 2023

Women's History Month

Female deer, known as a doe, in a high-quality habitat tend to produce more fawns than those residing in poor-quality habitat. Adult does (2.5 + years) usually produce twins, like this one spotted with her fawns at Prompton Dam & Reservoir.

Sun	Mon	Tue	Wed	Thu	Fri	Sat
			1	2	3	4
				Read Across America Day	World Wildlife Day	
			Invasive Species Awareness Week			
5	6	7	8	9	10	11
			International Women's Day			
12 Daylight Savings Begins National Girl Scout Day	13	14	15	16	17	18
					St. Patrick's Day	
19	20	21	22	23	24	25
	March Equinox	International Day of Forests	Ramadan Begins World Water Day	World Meteorological Day		
26	27	28	29	30	31	
				Take A Walk In The Park Day		

Spring Category, *Deer In The Creek*, Prompton Dam & Reservoir, Photo by Sarah Hine



April 2023

Keep America Beautiful Month
National Volunteer Month

The period of daytime shortly after sunrise and before sunset is known as the golden hour, or the 'magic hour', by photographers and cinematographers. The softer light creates beautiful landscapes, like this one captured at Blue Marsh Lake.

Sun	Mon	Tue	Wed	Thu	Fri	Sat
						1 <i>April Fool's Day</i>
2	3	4	5	6	7 <i>Good Friday</i>	8
9 <i>Easter Sunday</i>	10	11	12	13	14 <i>Look Up At The Sky Day</i>	15
16	17	18	19	20 <i>Volunteer Appreciation Day</i>	21 <i>Ramadan Ends</i>	22 <i>Earth Day</i>
<u>23</u> 30 <i>National Picnic Day</i>	24	25	26	27	28 <i>Arbor Day</i>	29

Spring Category, *Moody Skies*, Blue Marsh Lake, Photo by Carol Cole



May 2023

National Water Safety Awareness Month
National Lyme Disease Awareness Month

Sunflowers are a common resource used by natural resource managers to create food plots to provide additional food sources for wildlife. Sunflowers grow large seed heads during the summer providing an abundance of food for birds and small game species into the fall seasons. Sunflower fields for enhanced dove habitat can be seen throughout the Blue Marsh Lake property where the PA Game Commission leases and manages habitat for enhanced hunting opportunities.

Sun	Mon	Tue	Wed	Thu	Fri	Sat
	1	2	3	4	5 <i>Cinco De Mayo</i>	6
7	8	9	10	11	12	13 <i>World Migratory Bird Day</i>
14 <i>Mother's Day</i>	15	16	17	18	19 <i>National Endangered Species Day</i>	20 <i>Armed Forces Day</i>
21 <i>International Day for Biological Diversity</i>	22	23	24	25	26	27
28	29 <i>Memorial Day</i>	30	31 <i>National Dam Safety Awareness Day</i>			

Spring Category, Sunflower Field Sunset, Blue Marsh Lake, Photo by Sally Copeland



June 2023

National Safety Month
National Rivers Month
Pride Month

The Great Blue Heron is a common sight at all of the Northern Area Dam & Reservoir Projects' from headwaters to tailwaters. They are the largest of the dark herons measuring 38-53 inches long with a 70-inch wing-span!

Sun	Mon	Tue	Wed	Thu	Fri	Sat
				1	2	3 <i>World Bicycle Day</i> <i>National Trails Day</i>
4	5 <i>World Environment Day</i>	6 <i>D-Day</i>	7	8 <i>World Oceans Day</i>	9	10 <i>National Get Outdoors Day</i> <i>Francis E. Walter Dam Commissioned 1961</i>
11	12	13	14 <i>Flag Day</i> <i>Army Birthday</i>	15	16 <i>Army Corps of Engineers Birthday</i>	17
18 <i>National Go Fishing Day</i> <i>Father's Day</i>	19 <i>Juneteenth</i>	20 <i>American Eagle Day</i>	21 <i>June Solstice</i>	22	23	24
25	26	27	28	29	30	

Summer Category, Blue Marsh Lake, Photo by Stacey Hines



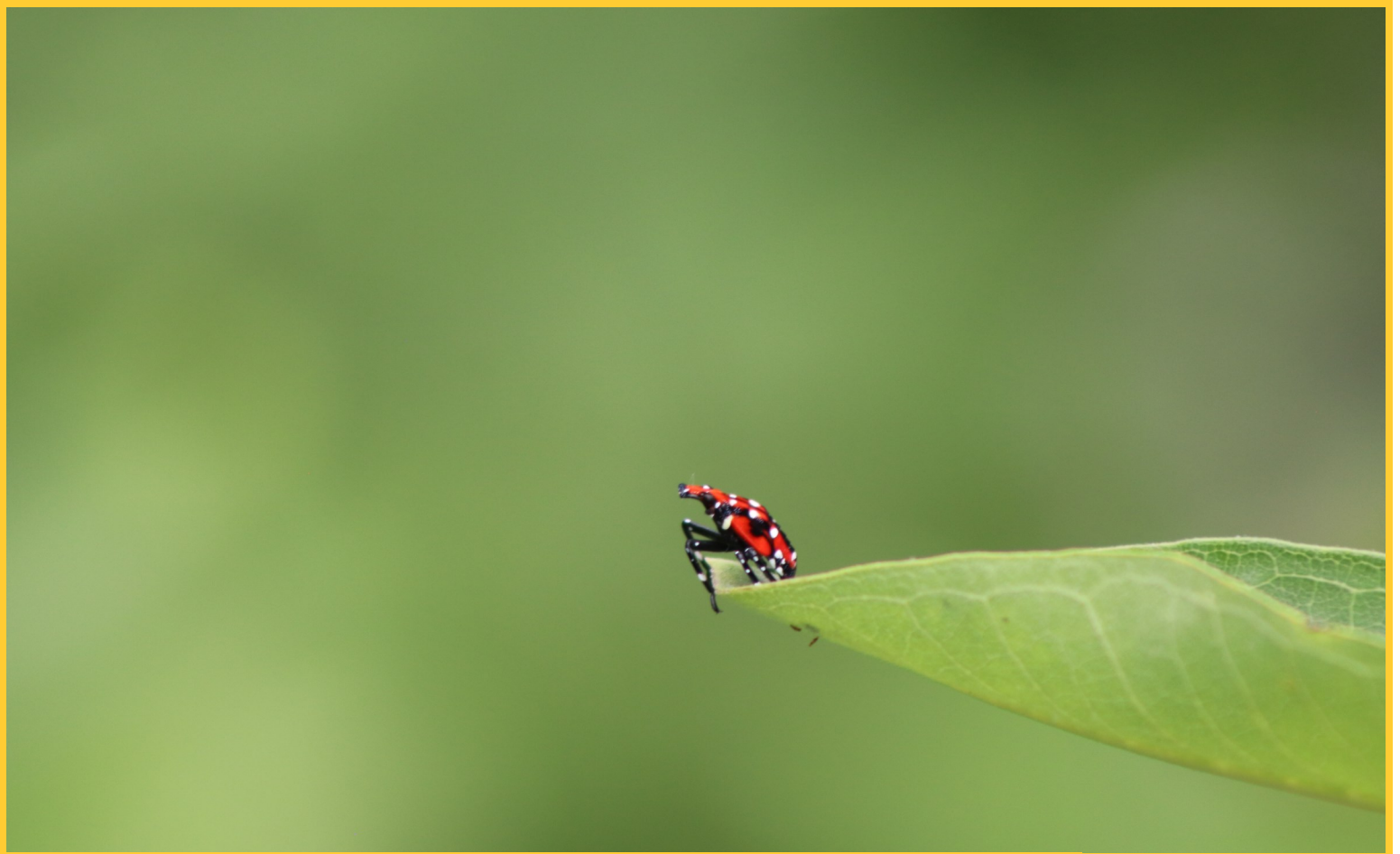
July 2023

National Lake Appreciation Month

Monarch butterflies conduct cross-continental journeys upwards of 3,000 miles every year to overwintering locations. Milkweed plants (Asclepias) are a vital host plant for Monarchs as they require the plant to provide food and shelter throughout all of their life stages.

Sun	Mon	Tue	Wed	Thu	Fri	Sat
						1 <i>Prompton Dam Commissioned 1960</i>
2	3	4 <i>Independence Day</i>	5	6	7	8
9	10	11	12	13	14	15 <i>Blue Marsh Lake Dam Commissioned 1979</i>
16	17	18	19	20	21 <i>Philadelphia District Established 1866</i>	22
$\frac{23}{30}$	$\frac{24}{31}$ <i>World Ranger Day</i>	25	26	27	28	29

Summer Category, Monarch and Milkweed, Blue Marsh Lake, Photo by Alexis Albu



August 2023

Sun	Mon	Tue	Wed	Thu	Fri	Sat
		1	2	3	4	5
					Coast Guard Birthday	
6	7	8	9	10	11	12
13	14	15	16	17	18	19
					Gen. E. Jadwin Dam Commissioned 1959	
20	21	22	23	24	25	26
					Women's Equality Day	
27	28	29	30	31		

The Spotted Lanternfly is an invasive species of great concern due to its appetite for a variety of native plant species, impacts to quality of life, and potential impacts to agricultural & forestry industries. The interestingly beautiful insect goes through multiple growth stages called instars. Here a 4th instar nymph boasts a bright red color with black and white markings.

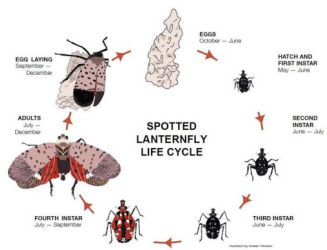


Image Credit:
extension.psu.edu/spotted-lanternfly
Illustration by Colleen Witkowski



September 2023

National Hispanic Heritage Month

The brilliant colors of sunrises and sunsets are caused by atmospheric particles refracting light through the atmosphere, called scattering. Blue and violet light "scatters" more easily, lending us to primarily see yellow, orange, and red.

Sun	Mon	Tue	Wed	Thu	Fri	Sat
Photographer's Note — "The night this photo was taken I almost did not go to the lake. I got out of work late and knew it was going to get dark in a half hour. However, my dogs love the outdoors and Blue Marsh is their favorite place to go. I figured the lake was just what I needed after a busy day; even if we could only spend a mere 15 minutes there. After arriving at the boat launch, I looked up and witnessed the most amazing sky I had ever seen. I tell this story often and advise people to get outdoors daily!" - Carol Cole					1	2
3	4 National Wildlife Day Labor Day	5	6	7	8	9
10 World Suicide Prevention Day	11 Patriot Day	12	13	14	15 ← Rosh Hashanah →	16
17 Beltzville Dam Commissioned 1971	18 Air Force Birthday	19	20	21	22	23 National Public Lands Day National Hunting & Fishing Day September Equinox
24 World Rivers Day ← Yom Kippur →	25	26	27	28	29	30

Fall Category, Red Skies, Blue Marsh Lake, Photo by Carol Cole



October 2023

Prompton Dam releases water into the Lackawaxen River, a 31.3 mile long tributary of the Delaware River situated in Northeast Pennsylvania amongst the Pocono Mountains. The 271 acre Prompton Reservoir captures water from the West Branch Lackawaxen, comprising 59.6 square miles of the 598 square mile Lackawaxen River Basin.

Sun	Mon	Tue	Wed	Thu	Fri	Sat
1	2 <i>World Habitat Day</i>	3	4	5	6	7
8	9 <i>Indigenous People's Day</i> <i>Columbus Day</i>	10	11	12 <i>Navy Birthday</i>	13 <i>International Day for Natural Disaster Reduction</i>	14
15	16	17	18	19	20	21
22	23	24	25	26	27	28
29	30	31 <i>Halloween</i>				

Fall Category, *Outlet of Dam*, Prompton Dam & Reservoir, Photo by Sarah Hine



November 2023

Native American Heritage Month

Mountain biking provides a variety of health, community and economic benefits. Blue Marsh Lake recently completed over 10 miles of enhanced trail projects in partnership with the Berks Area Mountain Biking Association. The trails create new opportunities for bikers and hikers to get outside and enjoy nature's benefits.

Sun	Mon	Tue	Wed	Thu	Fri	Sat
			1	2	3	4
5	6	7	8	9	10	11
Daylight Savings Ends					Marine Corps Birthday	Veterans Day
12	13	14	15	16	17	18
Diwali			National Recycling Day		National Hiking Day	
19	20	21	22	23	24	25
				Thanksgiving	Native American Heritage Day	
26	27	28	29	30		

Fall Category, Blue Marsh Lake, Photo by John Pacharis



December 2023

Sun	Mon	Tue	Wed	Thu	Fri	Sat
					1	2
3	4	5 <i>World Soil Day</i>	6	7 <i>Pearl Harbor Remembrance Day Hanukkah Begins</i>	8	9
10	11 <i>International Mountain Day</i>	12	13 <i>National Guard Birthday</i>	14	15 <i>Hanukkah Ends</i>	16
17	18	19	20	21 <i>December Solstice</i>	22	23
<u>24</u> 31 <i>Christmas Eve New Year's Eve</i>	25 Christmas	26 <i>Kwanzaa Begins</i>	27	28	29	30

The Dry Brooks Boat Launch at Blue Marsh Lake provides an ideal west facing views of the lake's landscape to capture sunsets.

No two sunsets are alike. Some are brilliantly vibrant while others exhibit soft and calming pastels. Ever-changing weather conditions, time of year, and time of day are all contributing factors to a sunset's appearance.