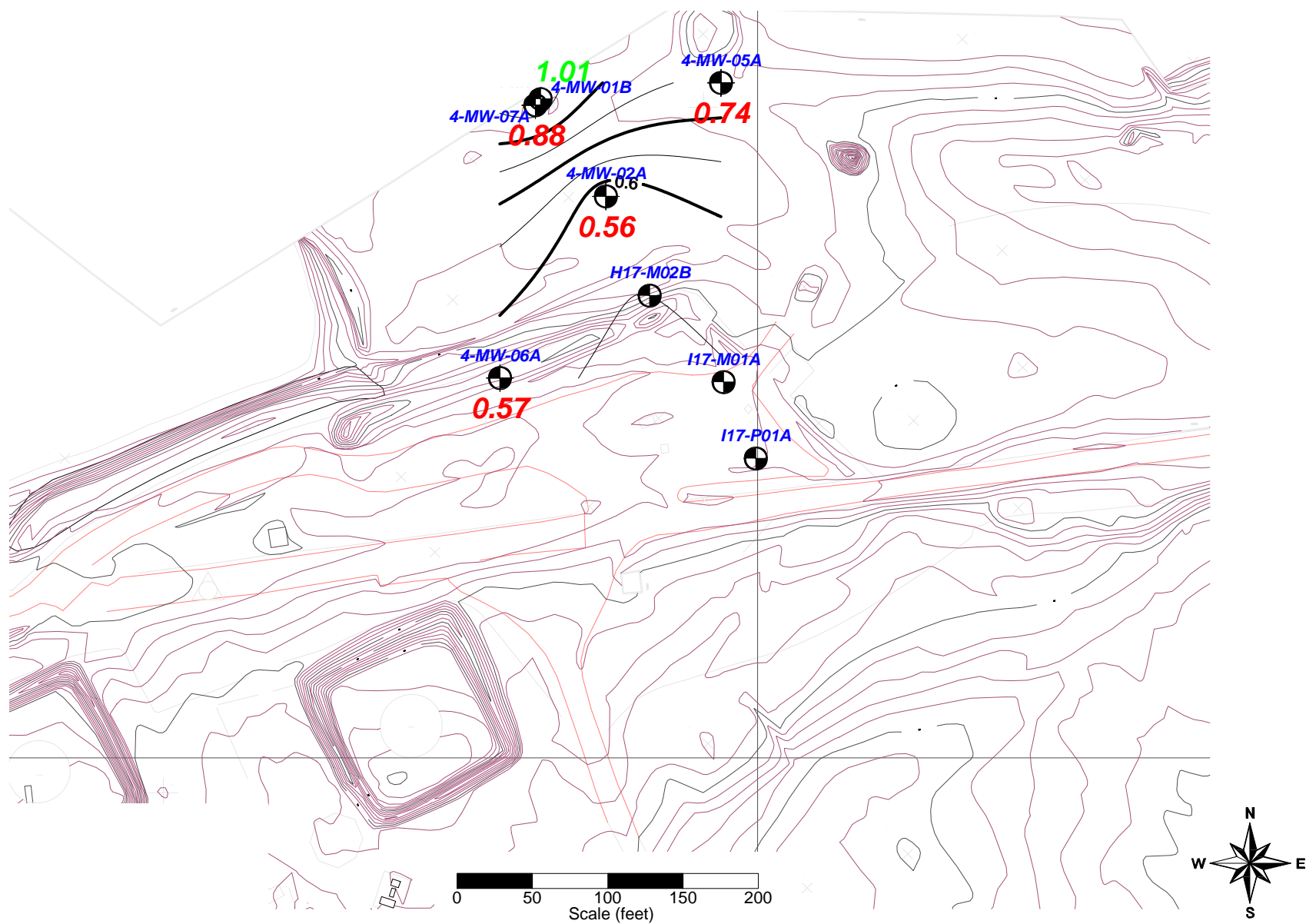


## **APPENDIX L**

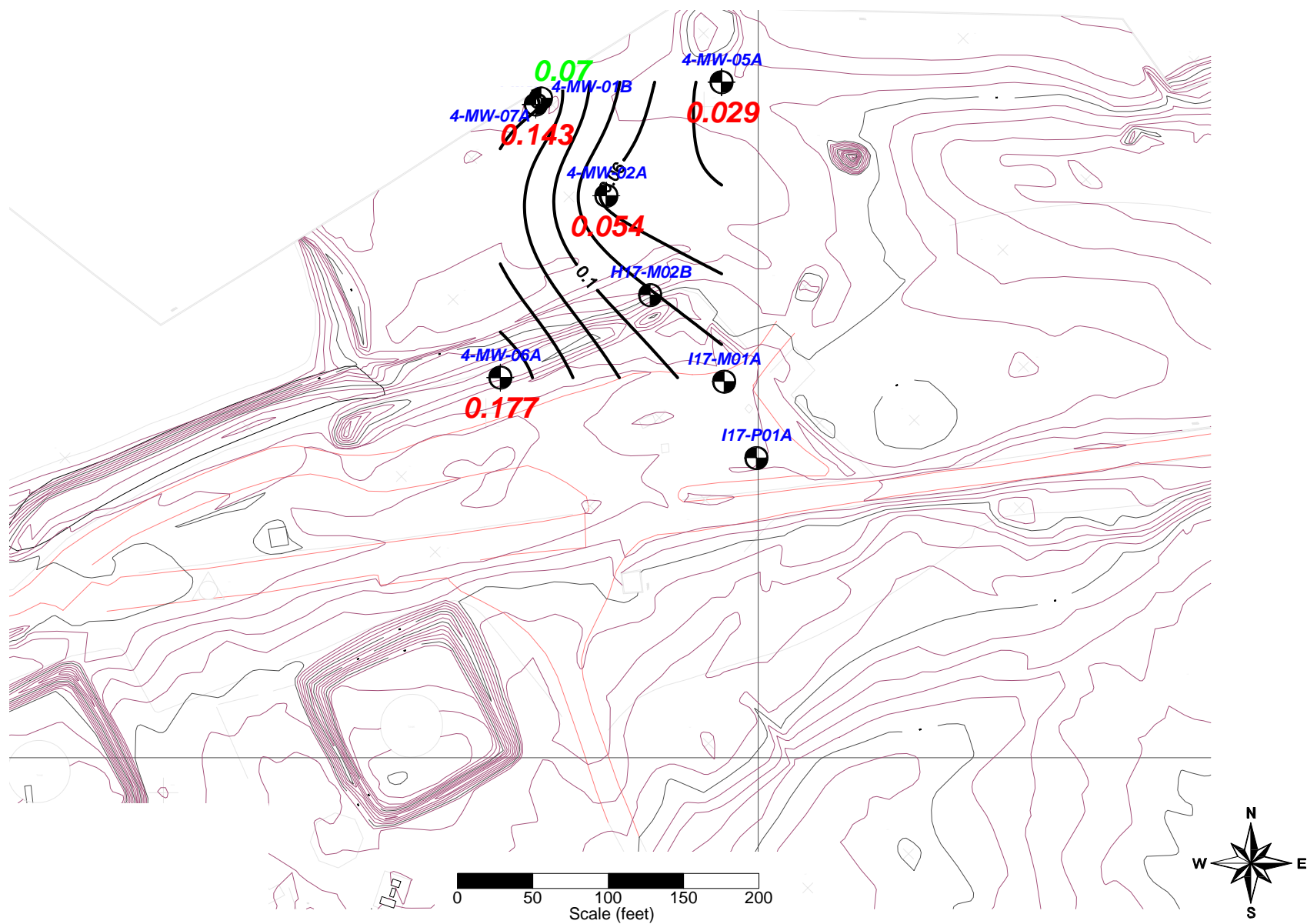
### **Water Quality Data Figures & Isopleths (Quarters1-6)**

Note: **1.01** = Utot Concentration for "B" Aquifer  
**0.28** = Utot Concentration for "A" Aquifer

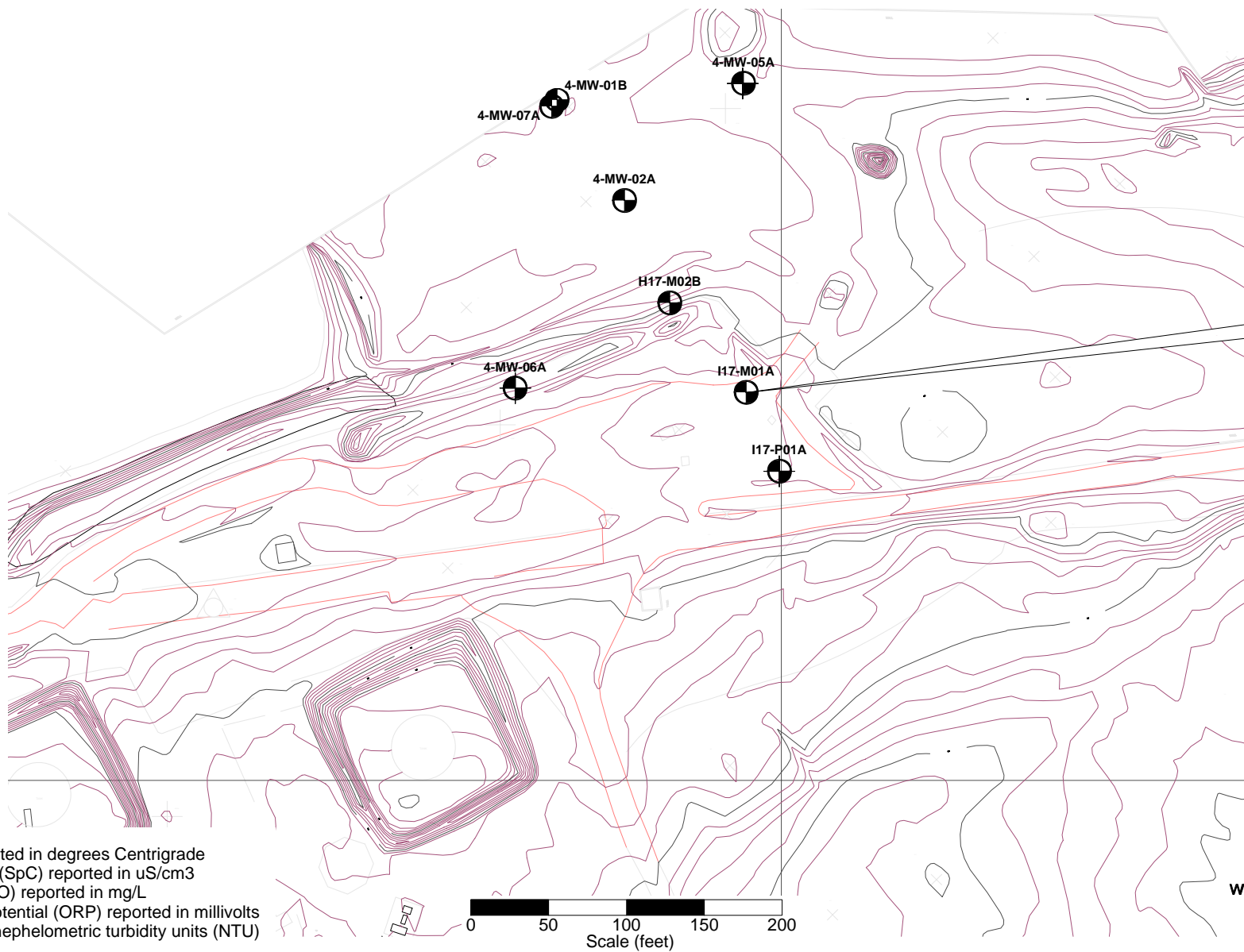


Note: Units are in pCi/L

Note: **0.07** = Utot Concentration for "B" Aquifer  
**0.28** = Utot Concentration for "A" Aquifer



Note: Units are in pCi/L



4-I17-M01A  
 T = 17.5  
 pH = 7.22  
 SpC = 3713  
 TURB = 0  
 DO = 0.22  
 ORP = -140.7

**Notes:**

1. Temperature (T) reported in degrees Centigrade
2. Specific Conductivity (SpC) reported in uS/cm3
3. Dissolved Oxygen (DO) reported in mg/L
4. Oxygen Reduction Potential (ORP) reported in millivolts
5. Turbidity reported in nephelometric turbidity units (NTU)
6. NM = not measured



**CABRERA SERVICES**  
 RADIOLOGICAL • ENVIRONMENTAL • REMEDIATION  
[WWW.CABRERASERVICES.COM](http://WWW.CABRERASERVICES.COM)

Long-Term Groundwater Monitoring Program, May/June 2006 - Q4  
 DuPont Chambers Works, Deepwater, NJ

Groundwater Stabilization Parameters  
 AOC 4

