

BELTZVILLE LAKE MASTER PLAN REVISION

Public Involvement Presentation
October 10, 2024



US Army Corps
of Engineers®

U.S. ARMY



U.S. ARMY



US Army Corps
of Engineers®

PURPOSE OF THE PRESENTATION

- **Inform the public and stakeholders** that a master plan revision has started
- **Define** a master plan
- **Describe** the master plan **revision process**
- **Provide instructions** on how to participate in the revision process
- **Encourage** participation
- **Provide links** to documents



U.S. ARMY



US Army Corps
of Engineers®

PRESENTATION TOPICS

- ▶ What is a *Master Plan*?
- ▶ Why do a revision?
- ▶ What is the revision process?
- ▶ What about the current (1971) Master Plan?
- ▶ What about NEPA compliance?
- ▶ What is NOT part of a Master Plan?
- ▶ What is changing in the Master Plan?
- ▶ How can I participate?
- ▶ Who can I talk to about the plan?
- ▶ When will the Master Plan be completed?



Photo: Stacey Hines



U.S. ARMY



US Army Corps
of Engineers®

WHAT IS A MASTER PLAN?

4

The Corps defines a Master Plan as...

“The strategic land use management document that guides the comprehensive management and development of all project recreational, natural and cultural resources throughout the life of the water resource development project.”

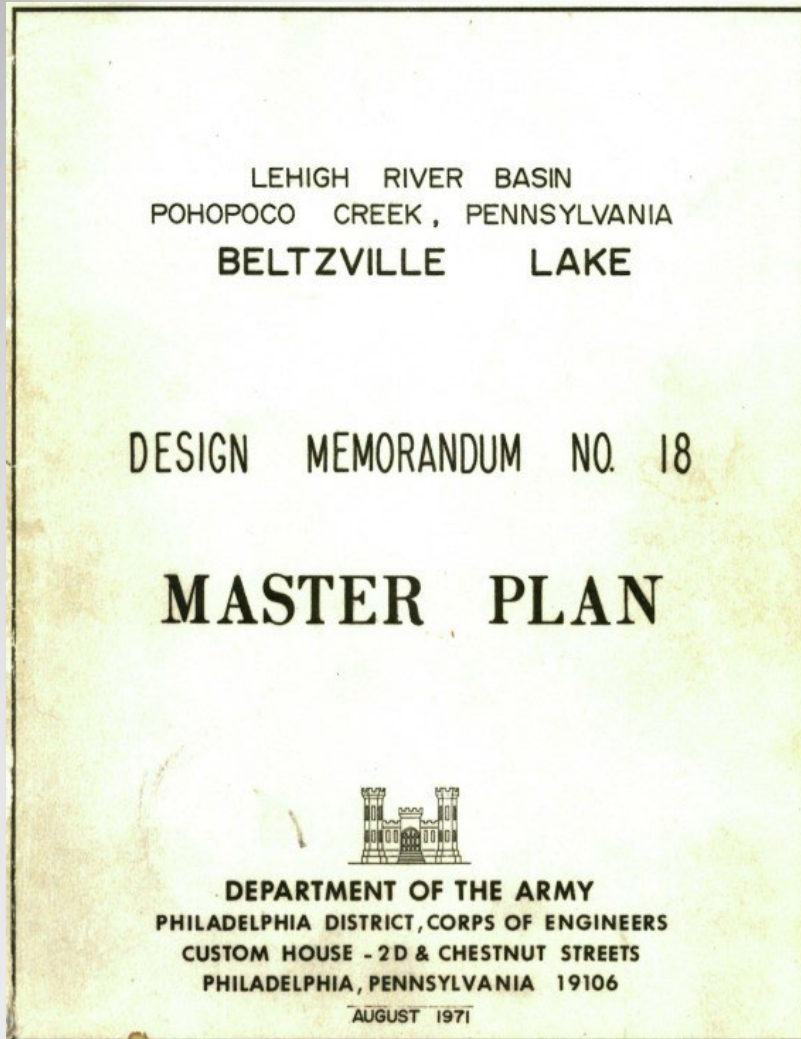
Source: Chapter 3 of EP 1130-2-550 available at
www.usace.army.mil/library/publications



U.S. ARMY

US Army Corps
of Engineers®

WHAT IS A MASTER PLAN?



- The Master Plan (MP) is a **25-year comprehensive land use management guide** for recreational, natural, and cultural resources
- **Adheres to Federal laws** to preserve, conserve, restore, maintain, manage, and develop project lands, waters, and associated resources, including the National Environmental Policy Act (NEPA) for environmental stewardship and outdoor recreation
- Provides **land classifications** and **resource management objectives** that are broad and adaptive over time
- Requires and encourages **public involvement**

See Engineering Regulation (ER) and Engineering Pamphlet (EP) 1130-2-550 for regulations and policy guidance related to the MP



U.S. ARMY



US Army Corps
of Engineers®

WHY DO A REVISION?

- The current master plan is **out of date** and is **no longer compliant** with existing laws and regulations
- **Substantial changes in** environmental, cultural, social, and recreational **conditions have occurred** since the current master plan was approved
- **Re-examine land classification** due to these substantial changes
- The master plan **provides long-term goals** and **consistent management objectives** to guide balanced management of resources and public recreation

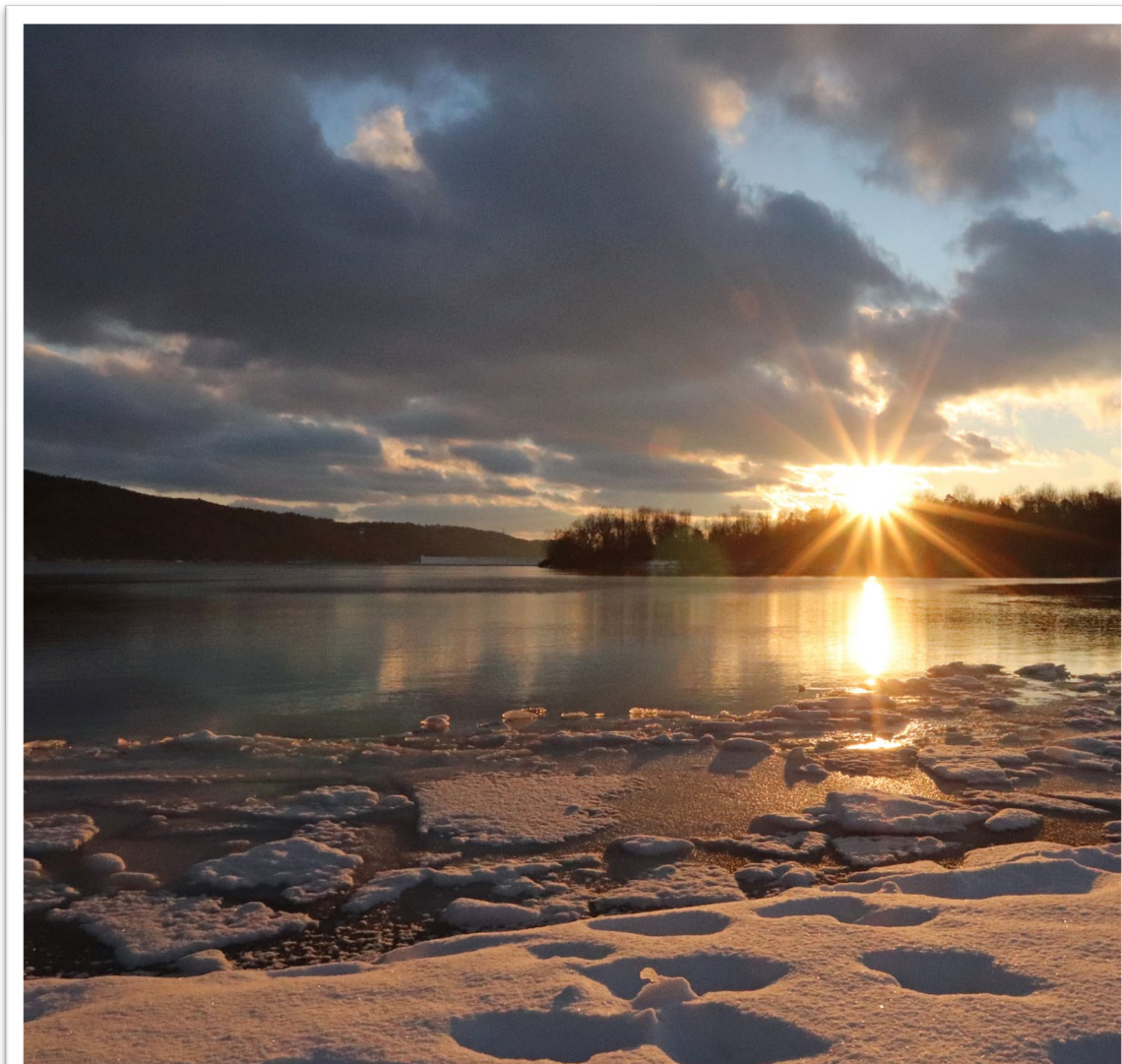


Photo: Stacey Hines



U.S. ARMY



US Army Corps
of Engineers®

WHAT IS THE REVISION PROCESS?

The process is a cover-to-cover **review and revision of the entire plan** and is accomplished by:

- **A team of Corps employees** including Operations, Real Estate, Master Planning, and Environmental Compliance subject matter experts
- **Receive input from** and **collaboration with** partners, neighbors, stakeholders, elected officials, resource agencies, and the public
- A thorough review and update of **land and water surface classifications**
- Developing appropriate **NEPA compliance** documents



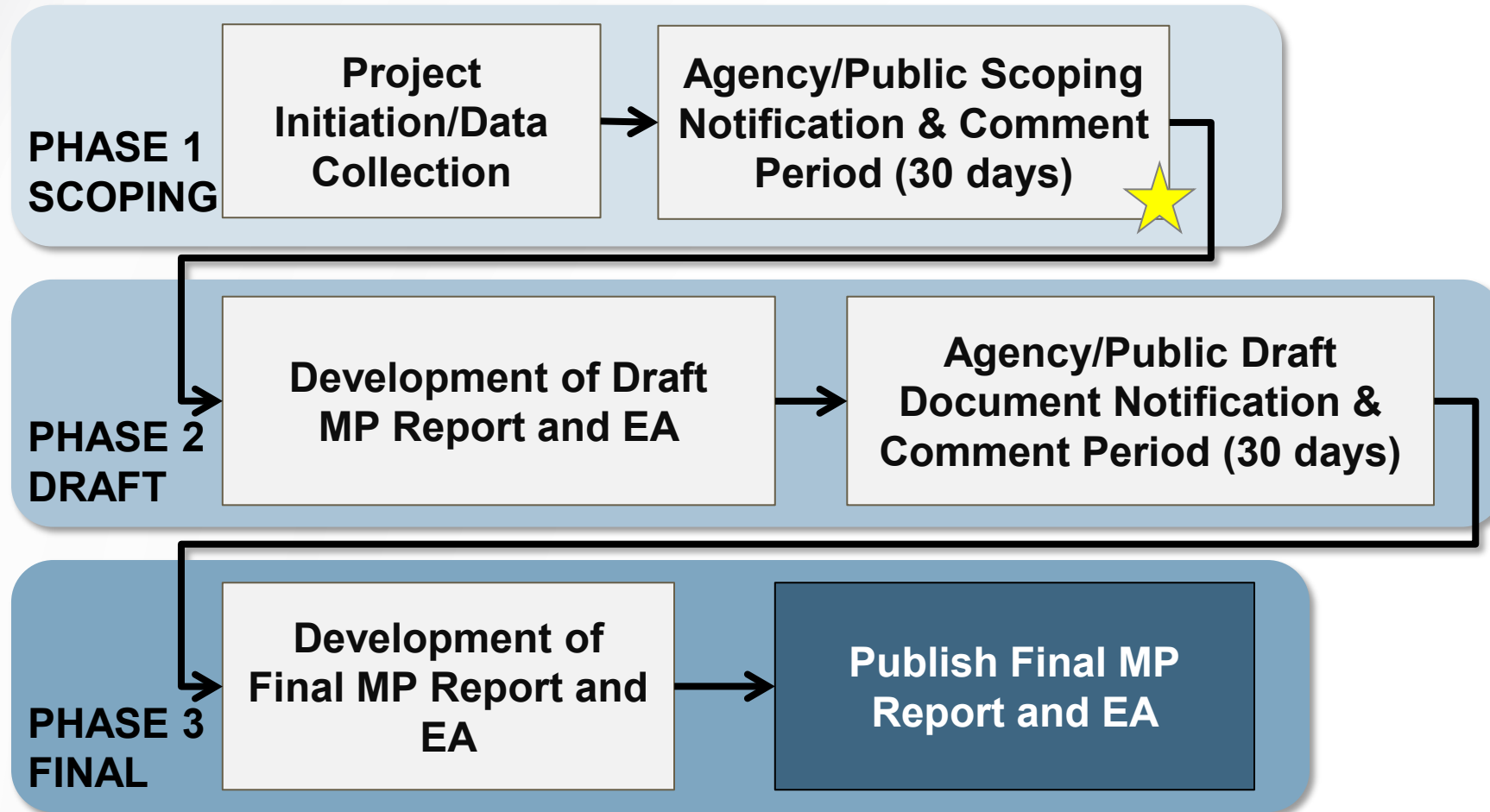


U.S. ARMY



US Army Corps
of Engineers®

WHERE ARE WE IN THE REVISION PROCESS?



Where we are today



U.S. ARMY



US Army Corps
of Engineers®

WHAT IS THE REVISION PROCESS?

LAND CLASSIFICATIONS

9

Source: Engineering Pamphlet (EP) 1130-2-550

Land Classification	Definition
Project Operations	Lands required for the dam, spillway, levees, office, maintenance facilities and other areas that are used solely for project operations.
High Density Recreation	Land developed for intensive recreational activities for the visiting public, including day use areas and campground areas for commercial concessions, and quasi-public development.
Multiple Resource Management Lands	Low Density Recreation: Lands with minimal development or infrastructure that support passive public recreational use (e.g., trails, primitive camping, wildlife observation, fishing and hunting).
	Wildlife Management: Lands designated for the stewardship of fish and wildlife resources.
	Vegetative Management: Lands designated for the stewardship of forest, prairie, and other native vegetative cover.
	Inactive and/or Future Recreation Areas: Recreation areas planned for the future or that have been temporarily closed.
Environmentally Sensitive Areas	Areas where scientific, ecological, cultural or aesthetic features have been identified. These areas must be considered by management to ensure they are not adversely impacted.
Mitigation	Lands acquired or designated specifically for offsetting losses associated with development of the project. Lands allocated as separable mitigation lands can only be given this classification.



U.S. ARMY



US Army Corps
of Engineers®

WHAT IS THE REVISION PROCESS?

WATER SURFACE CLASSIFICATIONS

10

Source: Engineering Pamphlet (EP) 1130-2-550

Water Surface Classification	Definition
Open Recreation	Those waters available for year-round or seasonal water-based recreational use.
Restricted	Water areas restricted for project operations, safety, and security purposes.
Designated No-Wake	To protect environmentally sensitive shoreline areas, recreational water access areas from disturbance, and for public safety.
Fish and Wildlife Sanctuary	Annual or seasonal restrictions on areas to protect fish and wildlife species during periods of migration, resting, feeding, nesting, and/or spawning.

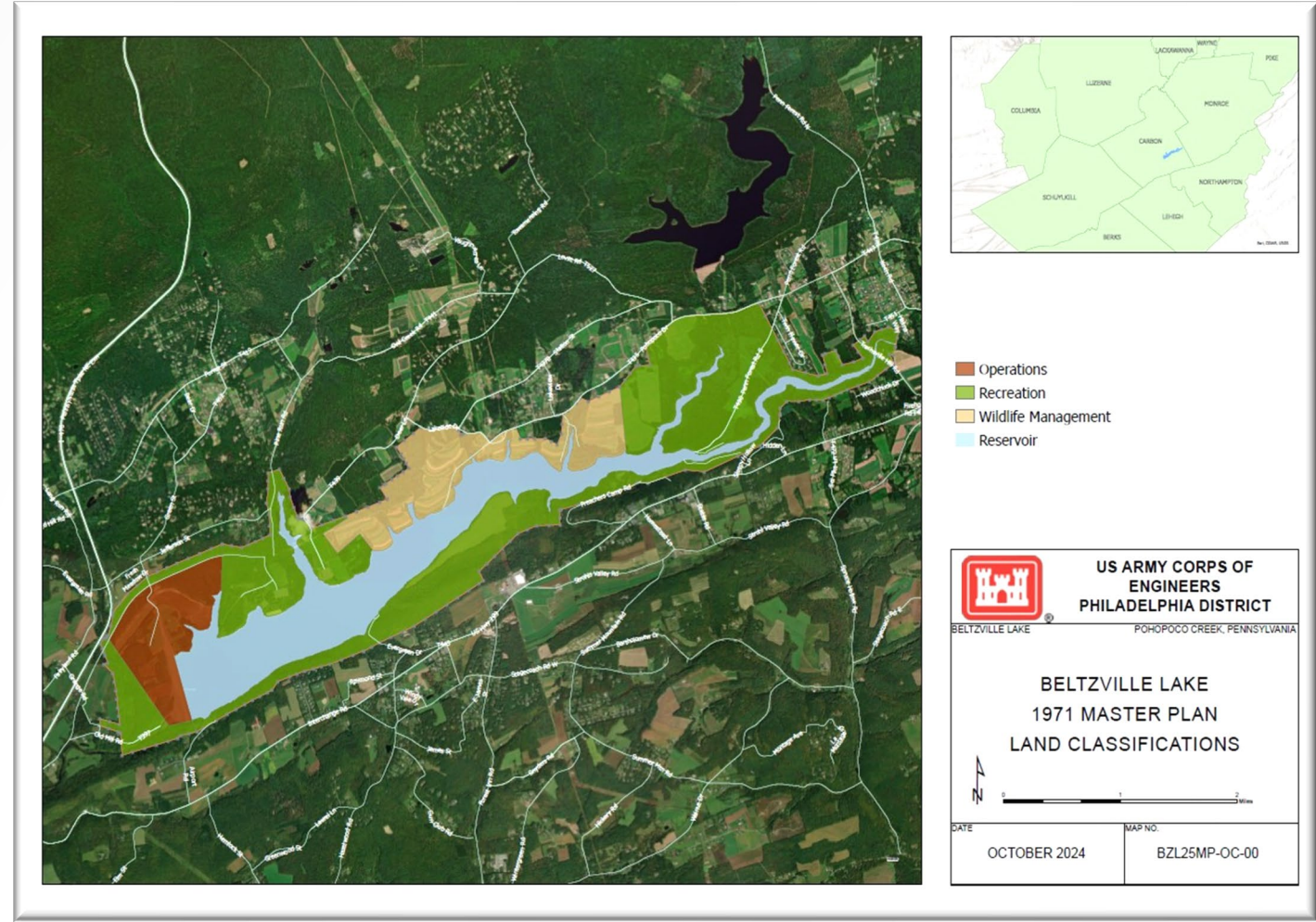


US Army Corps
of Engineers®

WHAT IS IN THE CURRENT MASTER PLAN?

11

- The most recent **approved** Master Plan with land and water classifications was in **1971**.
- The Master Plan and map can be **downloaded from the website** at the link provided.
- The plan includes a site history and description, natural and cultural resources, and **factors affecting management** in 1971.
- The previous plan included detailed facility plans that are now part of other operational plans.





US Army Corps
of Engineers®

WHAT ABOUT NEPA COMPLIANCE? THE ENVIRONMENTAL ASSESSMENT

12

National Environmental Policy Act (NEPA)

Purpose of NEPA is to:

- Ensure federal agencies give proper **consideration to the environmental and cultural resources** prior to undertaking a federal action
- **Involve the Public** and stakeholders in the decision-making process
- **Document the process** by which agencies make informed decisions

NEPA **Process**:

- Opportunity for **public comments and questions** on the potential impacts of proposed federal actions
- Includes comments from other federal, state, and local governments, and Tribal Nations



U.S. ARMY



US Army Corps
of Engineers®

WHAT IS NOT PART OF A MASTER PLAN?



- Facility **design details**
- Details of **daily project administration**
- Technical aspects of:
 - Water management for **flood risk management**
 - Regional **water quality**
 - **Water supply**
 - **Water level management**
 - **Hydropower**
 - **Navigation**
- Management of **Flowage Easement** lands

See Engineering Regulation (ER) and Engineering Pamphlet (EP) 1130-2-550 for regulations and policy guidance related to the MP



US Army Corps
of Engineers®

WHAT IS CHANGING OR PROPOSED IN THE MP?

At this point in the revision process there are no proposed changes

The Corps is **requesting written comments for RECOMMENDED changes** to the existing master plan

Possible Changes to the Revised Master Plan Could Include:

- Change Land and Water Classification
- Change Resource Goals and Objectives
- Create Utility Corridors





U.S. ARMY



US Army Corps
of Engineers®

HOW CAN I PARTICIPATE?

Submit written comments!

Review all documents available on the USACE website:
www.nap.usace.army.mil/Missions/Civil-Works/Beltzville-Dam/Beltzville-Dam-Master-Plan/

Documents available on the website include:

- Previous Master Plan
- Project map
- Comment form
- Copy of this presentation

Spread the word by telling your colleagues, friends, and neighbors to participate



SCAN QR CODE



U.S. ARMY



US Army Corps
of Engineers®

HOW CAN I PARTICIPATE?

Comments will be accepted only in writing, some of the methods for submitting a comment include:

- You may **download the comment form** provided on the website, fill it out electronically, and email it to the Corps
- Or you may **print the comment form** provided on the website, fill it out by hand, and mail it to the Corps at the address on the comment form
- Or you may **write a comment or send an email without using the comment form**, and mail or email it to the Corps at the address provided on the website
- **Comments are due** by close of business on November 9, 2024

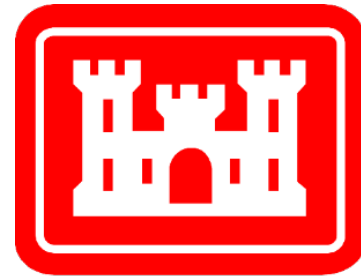


US Army Corps
of Engineers®

WHO CAN I TALK TO ABOUT THE PLAN?

Talk to **anyone from the USACE at the meeting** to answer your questions.

- **Call** the Beltzville Lake Office at: (610) 377-0332
- **Visit** the Beltzville Lake at:
2145 Pohopoco Drive
Lehigh, PA 18235
- **Email** us your questions or comments at:
PDPA-NAP@usace.army.mil



**US Army Corps
of Engineers®**



US Army Corps
of Engineers®

WHEN WILL THE FINAL MP BE COMPLETED?

18

- The Master Plan typically take **18-24 months** to complete
- Projected milestones/schedule

Milestones	Schedule
Public Notification for Scoping	10 Oct 2024
Public Comment Period (30 days)	09 Nov 2024
Draft Master Plan/EA Public Notification	Oct 2025 (anticipated)
Public Comment Period (30 days)	Nov 2025 (anticipated)
Final Master Plan/EA Approved	Apr 2026 (anticipated)



U.S. ARMY



US Army Corps
of Engineers®

THANK YOU!

19

Thank you for viewing this presentation and participating in the master plan revision process for Beltzville Lake.

Website address: www.nap.usace.army.mil/Missions/Civil-Works/Beltzville-Dam/Beltzville-Dam-Master-Plan/

Email: PDPA-NAP@usace.army.mil

Mail:

U.S. Army Corps of Engineers
Beltzville Lake
Attn: Josh Dinko, Facility Operations Specialist
2145 Pohopoco Drive
Lehigh, PA 18235



SCAN QR CODE