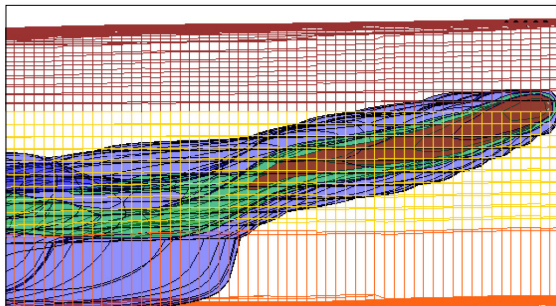


What We Do

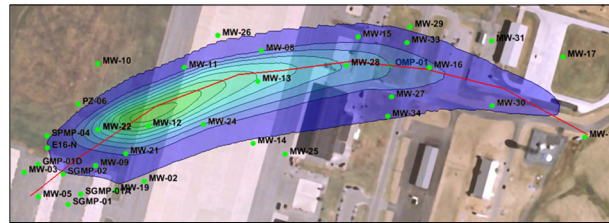
The North Atlantic Division Regional Center of Expertise (RCX) for Groundwater Modeling provides full-service solutions for groundwater related issues. Although the RCX was officially recognized in 2009, the team has been solving groundwater problems since 1994. Some past projects include:

- Everglades restoration density-dependent models to evaluate aquifer storage and recovery (ASR)
- Joint Base Cape Cod flow and transport models of munitions constituents in the saturated and unsaturated zones
- Groundwater models to evaluate Herbert Hoover Dike cut-off walls at Lake Okeechobee (a DSAC1 impoundment) in Florida
- Afghanistan base water supply evaluation using a groundwater model
- HTRW modeling for DOD installations, FUSRAP, FUDS, IRP, BRAC, Superfund and RCRA sites in EPA Regions I, II, and III



Professional Reputation

In addition to technical expertise, the groundwater modeling team has earned a reputation for responsiveness and customer service that rivals the best of the private sector. We are committed to providing our customers the information and services they need, when and where they need it.



Contact Information:

Laura Bittner

Philadelphia District
Co-Lead GW RCX
215.656.6688
laura.d.bittner@usace.army.mil
100 Penn Square East
Philadelphia PA 19107

Rose Schmidt

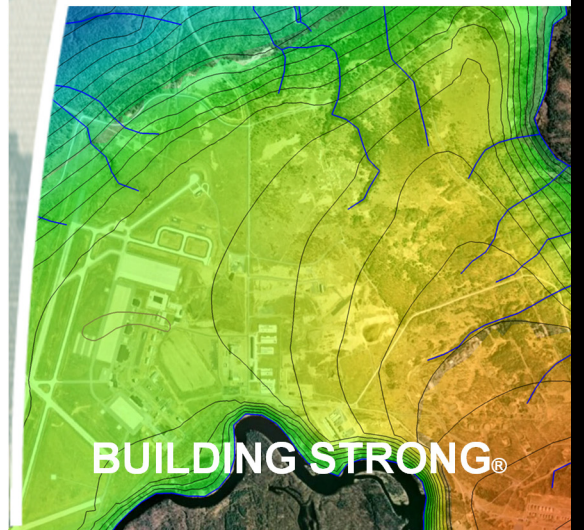
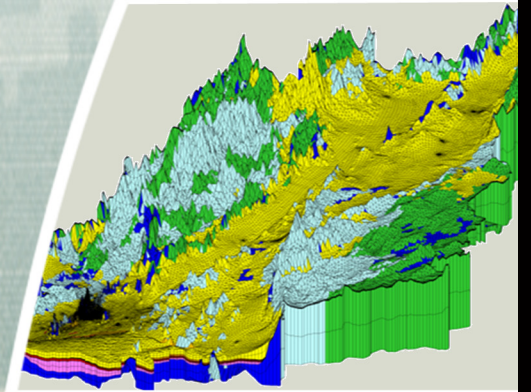
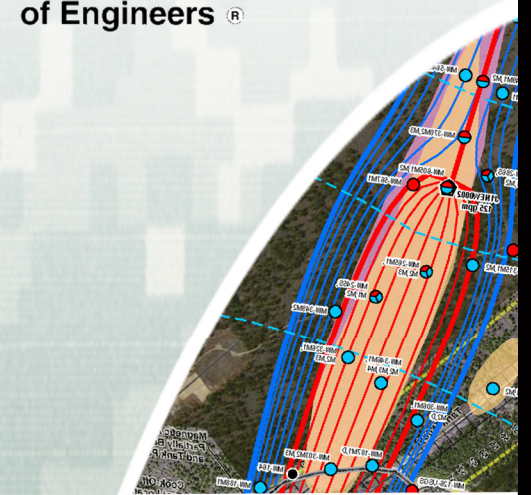
New England District
Co-Lead GW RCX
978.318.8345
rosemary.a.schmidt@usace.army.mil
696 Virginia Rd
Concord, MA 01742

Website:

<http://www.nad.usace.army.mil/About/RegionalCentersofExpertise/GroundwaterModeling.aspx>



US Army Corps
of Engineers



BUILDING STRONG®

Who We Are

The Regional Center of Expertise (RCX) for Groundwater Modeling is a multidisciplinary group of modelers, hydrogeologists, geologists, chemists, risk assessors, GIS experts, and engineers.

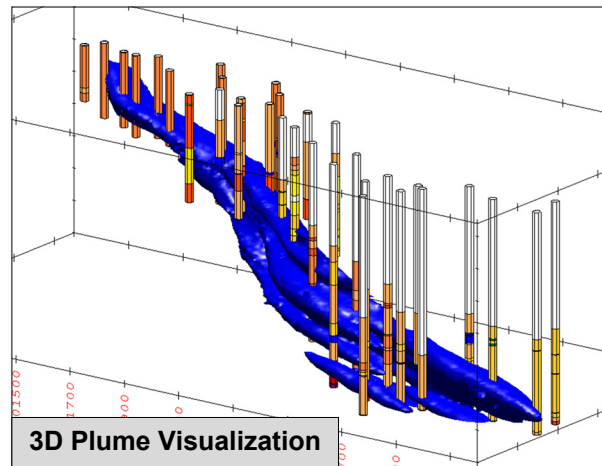
Specific Expertise Includes:

- Groundwater Flow Conceptualization and 3-D Visualization
- Contaminant Fate and Transport Modeling
- Groundwater Remediation Selection, Pilot Testing and Design
- Capture Zone Analysis
- Pumping Test Analysis
- Long-Term Monitoring Optimization
- Groundwater-Surface Water Interaction Modeling
- Unsaturated Zone Contaminant Fate and Transport Modeling (Leaching and Vapor Intrusion)
- Mine Tailings and Landfill Leachate Modeling
- Dam/Levee Safety Modeling and Seepage Analysis
- Wetlands Impact Evaluations
- Navigation Project Impact Modeling
- Saltwater Intrusion Modeling
- Water Supply Modeling and Wellhead Protection

We support Civil Works, Military and Interagency and International Services (IIS) mission areas.

Our Services Include:

- Groundwater investigations and models ranging from simple data visualizations to complex regional models in various geologic settings
- Preparation and review of scopes, schedules and government cost estimates
- Agency Technical Reviews (ATR) and Independent External Peer Reviews (IEPR)



Why Work with Us?

- Multi-disciplinary team of experts with decades of combined experience
- Experience with commercially available and USACE-developed software, models and tools
- Full knowledge of USACE, EPA and ASTM guidance for groundwater modeling; close association with ERDC, USGS
- Access to DoD High Performance Super-computers

