



**US Army Corps
of Engineers**

Philadelphia District

Public Notice

Public Notice No. Date:
CENAP-PLE-25-01 January 2, 2025

In Reply Refer to:
Environmental Resources Branch

Environmental Assessment of the Emergency Streambank and Shoreline Erosion, Protection of Public Works and Historic Structures, Section 14, Feasibility Study, Township of Delran, New Jersey

Notice is hereby given that the U.S. Army Corps of Engineers (USACE), Philadelphia District is initiating the scoping phase for an environmental assessment (EA) and feasibility study to investigate shoreline erosion on the Rancocas Creek near its confluence with the Delaware River in Delran Township (Delran), Burlington County, NJ (see Figures 1, 2, and 3).

The investigation is being conducted under the Continuing Authorities Program (CAP), Section 14 of the 1946 Flood Control Act (33 U.S.C. 701r), as amended. The purpose of the Section 14 authority is to protect public works and non-profit public facilities from streambank and shoreline erosion. Federal funding for each Section 14 project is limited to \$10,000,000 (as amended by Section 8138 of the Water Resources Development Act of 2022, P.L. 117-263). Section 14 authorizes the USACE to plan, design, and construct projects to manage risk to public works and non-profit public facilities from shoreline erosion. Section 14 authorizes the least cost alternative if the total cost of the proposed alternative is less than the cost to relocate the threatened infrastructure and public facilities.

The purpose of the study is to evaluate the erosion occurring along the Rancocas Creek shoreline, adjacent to River Drive in Delran, and investigate possible measures to manage risk to Delran's public utilities at this location. A strong tidal range influence of four to six feet, combined with stormwater runoff, has extensively scoured the banks of the creek north of River Drive, resulting in a substantial loss of sediment, trees, and vegetation along the embankment, leaving it vulnerable to continued erosion. If erosion is allowed to continue it would threaten River Drive, storm water infrastructure, electrical utility poles, and the Delran sewage treatment plant. The Philadelphia District is preparing an EA to assess potential environmental, cultural, and socioeconomic effects associated with alternatives to address the erosion, in accordance with the NEPA regulations. The alternatives currently under consideration include: gabion baskets, rip rap, sheet pile bulkhead, living shoreline, ecologically enhanced rock revetment, breakwater, and relocation of public facilities.

The USACE and Delran Township are currently in the early stages of planning for the study and are seeking input on potential environmental impacts that could be

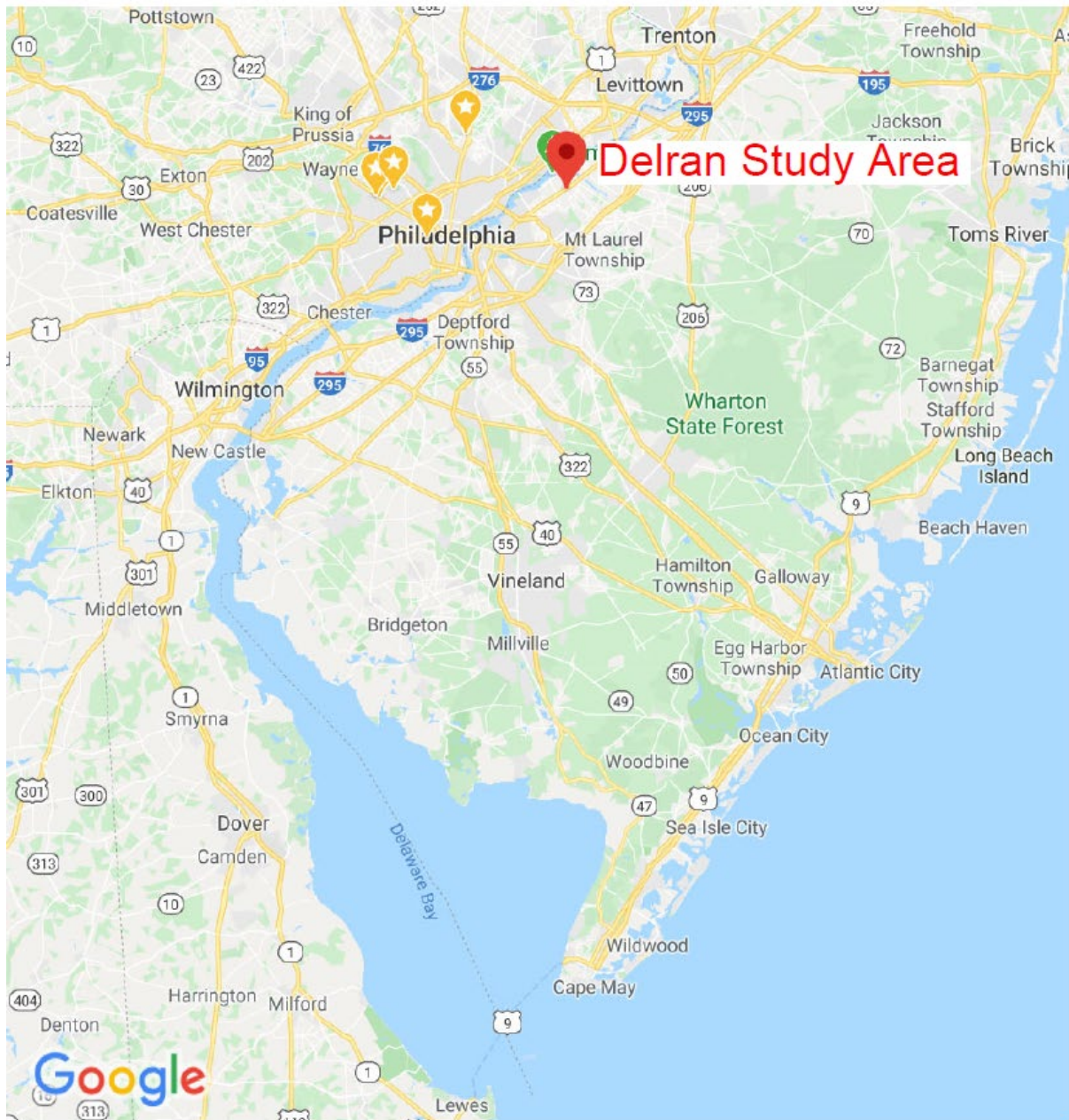
associated with a project along the Delran shoreline. This notice initiates scoping procedures as outlined in 33 CFR Part 230.12. Scoping is an early and open process for identifying any significant issues related to the proposed Federal action. Participation by the general public and other interested parties and stakeholders in identifying significant issues and alternatives is being solicited by means of this public notice. The public and other interested parties are invited to participate in the project scoping by providing written comments, questions, and concerns to this office within 30 days from the date of this notice.

For further information on this assessment, please contact:

Mr. Stephen Rochette
U.S. Army Corps of Engineers
ATTN: CENAP
1650 Arch Street
Philadelphia, PA 19103-2004
e-mail: Stephen.Rochette@usace.army.mil

FOR

Adrian Leary
Chief, Planning Division
Philadelphia District
U.S. Army Corps of Engineers



Map data ©2020 Google 10 mi

Figure 1: Regional Map with the Delran Study Area.

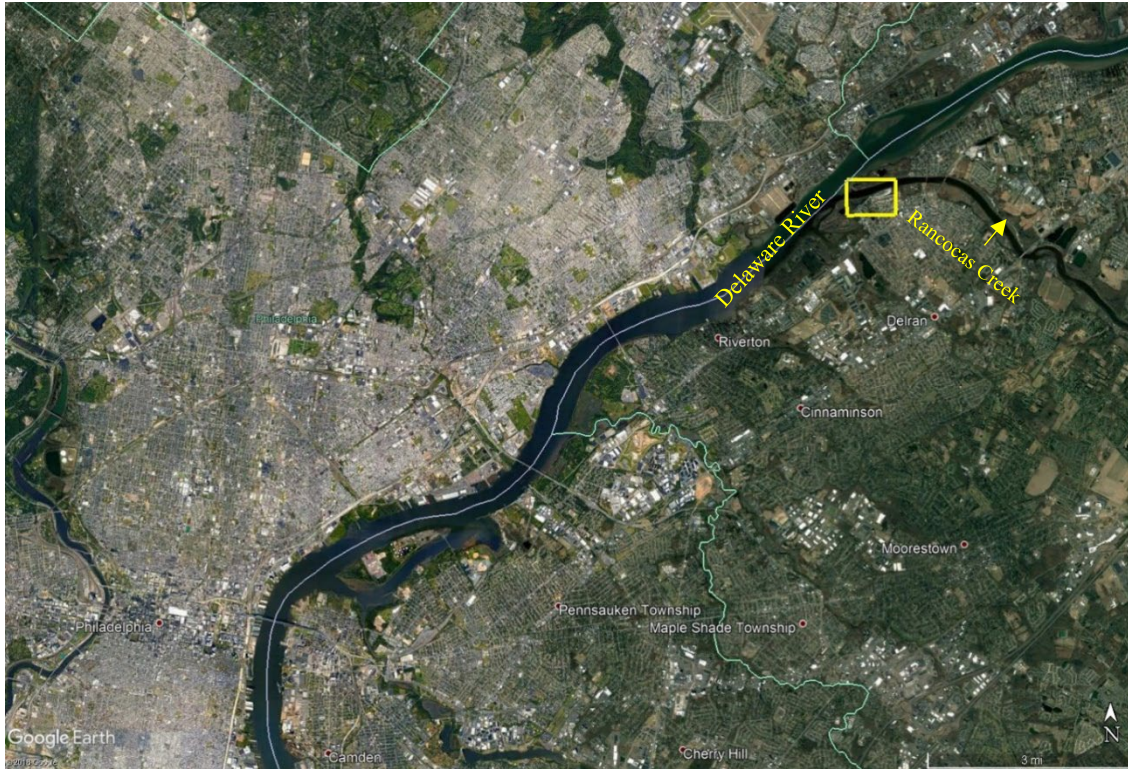


Figure 2: Vicinity of Study Area in Delran, New Jersey.



Figure 3: Location of the Study Area within the Township of Delran, New Jersey.