



U.S. ARMY CORPS OF ENGINEERS

BUILDING STRONG®

# Public Notice

Contact: USACE Philadelphia District  
E-mail: [PDPA-NAP@usace.army.mil](mailto:PDPA-NAP@usace.army.mil)

## Prompton Dam & Reservoir Master Plan Revision

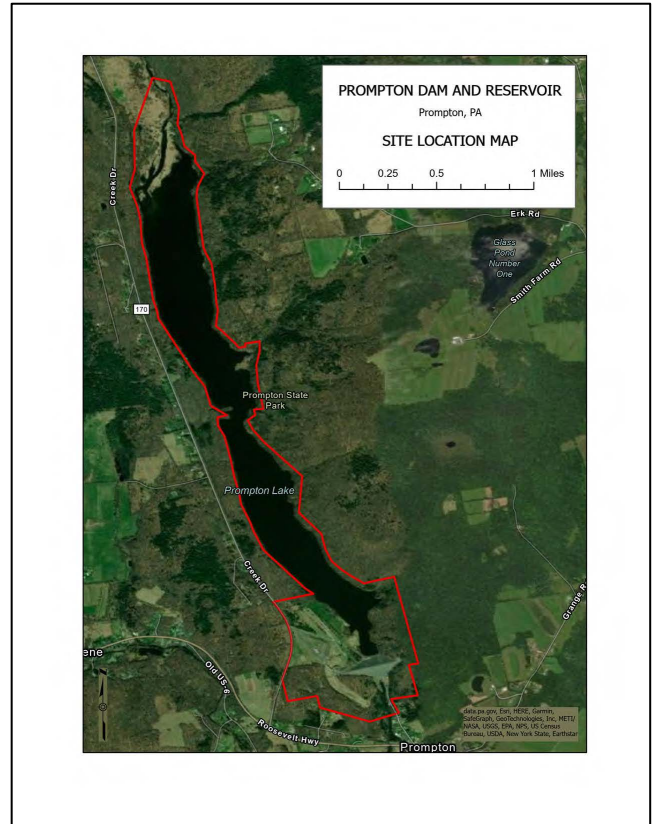
Pursuant to the National Environmental Policy Act (NEPA) of 1969, notice is hereby given that the U.S. Army Corps of Engineers Philadelphia District has completed a draft revision of the Prompton Dam and Reservoir Master Plan, which was last updated in 1971. The master plan update is considered a federal action and must comply with the National Environmental Policy Act. The draft document is available for review and public comment through January 6, 2023 (45 days). More information on the public comment process is listed below.

### Master Plan Overview

The Master Plan is the strategic land use management document that guides the comprehensive management and development of all project resources throughout the life of a Corps project. The Master Plan guides efficient and cost-effective management, development and use of project lands. It is a vital tool for the responsible stewardship and sustainability of project resources for the benefit of present and future generations. The Master Plan guides and articulates the Corps responsibilities, pursuant to Federal laws to preserve, conserve, restore, maintain, manage, and develop project lands and waters and associated resources. The intent of an updated Master Plan is to present a current inventory and assessment of resources, provide an analysis of resource use, and evaluate existing and future needs required to protect and improve the value of resources at a project.

### Prompton Dam Background

The Prompton Dam and Reservoir was authorized, as part of the Lackawaxen River Flood Control Project, by Public Law 858, 80th Congress. It is located on the West Branch Lackawaxen River, a tributary of the Lackawaxen River, approximately 4.7 miles upstream of Honesdale, PA and a half mile upstream of the village of Prompton, PA (site location map attached). The Prompton Dam project is part of an integrated reservoir flood control system. In conjunction with General Edgar Jadwin Dam, it provides flood control protection in varying



degrees, to the Boroughs of Prompton, Honesdale, Hawley, and smaller downstream communities.

Completed in 1960, the dam itself is a 1230-foot long, 140-foot-high zoned earth fill embankment with a 22.5-foot-wide crest at elevation 1227 ft. NGVD29 (National Geodetic Vertical Datum of 1929) or elevation 1226.37 ft. NAVD88 (North American Vertical Datum of 1988). To correct a hydrologic deficiency, modifications to the project were completed in two phases. In 2008 a concrete inverted T wall was constructed across the top of the dam increasing its elevation to 1233 ft. NGVD29/1232.37 NAVD88 along with spillway modifications. In 2012 further modifications to the emergency spillway were completed to increase spillway discharge capacity along with a spillway bridge and a relocated operations building. A Semi Quantitative Risk Analysis was performed in 2021-2022, resulting in a redesignation of Prompton Dam to a Dam Safety Action Classification Rating of 4, meaning the dam was found to present a low risk. Other smaller project features have been modified or constructed over the life of the project including but not limited to a disc golf course, hiking trails, interior storm water drainage system, and parking areas. The project contains approximately 1,500 acres of public lands including the area owned by the State of Pennsylvania and managed as Prompton State Park, in addition to the real estate and permanent reservoir owned and managed by the Federal government. Prompton Lake maintains 271 surface water acres at a recreational pool elevation of 1125 ft. NGVD29/1124.37 NAVD88. Project lands and waters provide natural resources and recreational opportunities for the public.

### **Public Comment Processes**

The U.S. Army Corps of Engineers, Philadelphia District has completed the draft revision of the Master Plan and Integrated Environmental Assessment for the USACE Prompton Dam and Reservoir located in Wayne County, Pennsylvania, which was last updated in 1971. Pursuant to the National Environmental Policy Act (NEPA) of 1969 an Environmental Assessment has been integrated into the Master Plan as a single document to assess the potential of impacts associated with the Master Plan revision. As part of the USACE planning and NEPA process, this notice of availability serves to notify you of the release and availability for review and comment of the draft Prompton Dam and Reservoir Master Plan and Integrated Environmental Assessment. This announcement provides the public, federal, state, local agencies and officials, Tribal Nations, and other interested parties the opportunity to consider and comment on the findings of potential effects, if any, of this proposed activity.

The comment period extends from November 21, 2022 through January 6, 2023 (45 days). The draft document with appendices can be downloaded from our District website: <http://www.nap.usace.army.mil/Missions/CivilWorks/PublicNoticesReports.aspx> or if you have trouble accessing the document, please contact us for an electronic copy. If you have any further questions regarding this notice, please contact the project biologist Gregory Wacik at [Gregory.A.Wacik@usace.army.mil](mailto:Gregory.A.Wacik@usace.army.mil) or (215) 656-6561 or Steve Rochette of the USACE Philadelphia District Public Affairs Office at [stephen.rochette@usace.army.mil](mailto:stephen.rochette@usace.army.mil)

For additional information regarding the proposed project or to submit comments, visit the project web page at: <https://www.nap.usace.army.mil/Missions/Civil-Works/Prompton-Jadwin-Dam/Prompton-Dam-Reservoir-Master-Plan/>