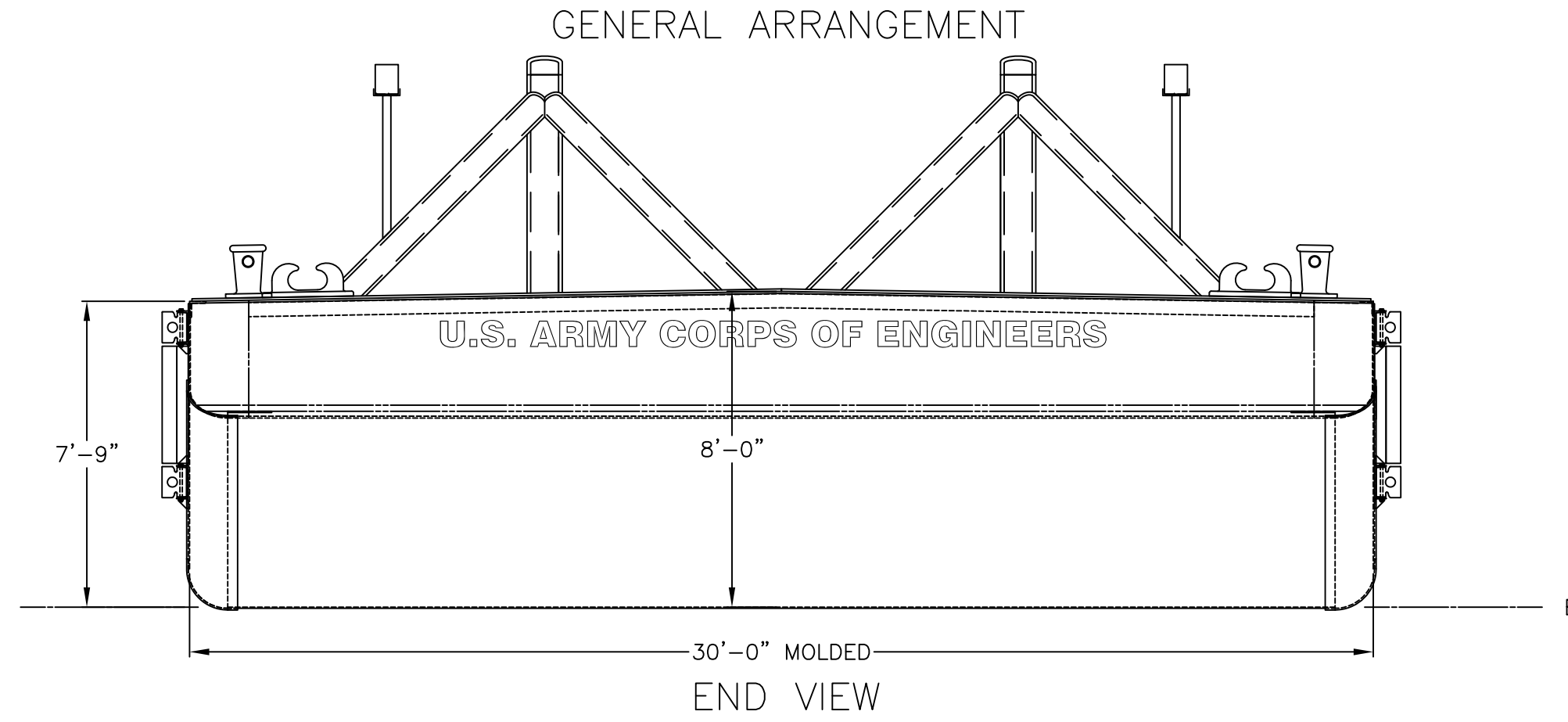
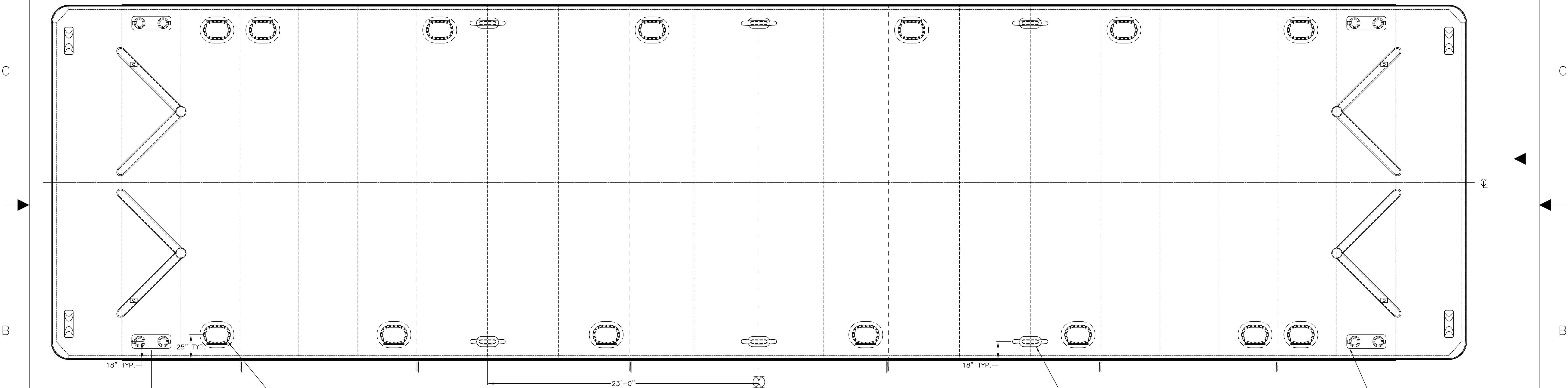
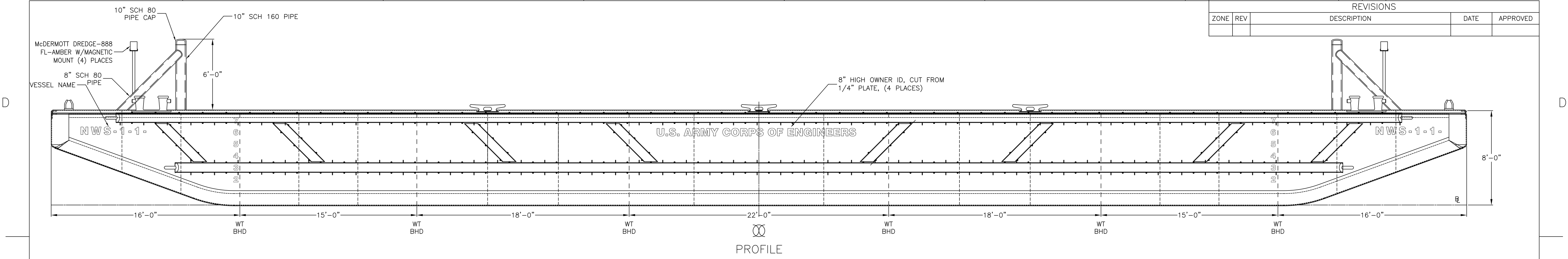


DRAWING NUMBER		SHEET REV		1	
REVISIONS					
ZONE	REV	DESCRIPTION	DATE	APPROVED	



PRINCIPAL CHARACTERISTICS

MOLDED LENGTH	119'-10-3/4"
MOLDED BEAM	30'-0"
MOLDED DEPTH AT CENTERLINE	8'-0"
MOLDED DEPTH AT SIDE	7'-9"
DESIGN DECK LOAD	2000 PSF

TO CLASS: MALTESE CROSS A1 BARGE, FOR SERVICE ON RIVERS AND INTRACOASTAL WATERWAYS

DEPARTMENT OF THE ARMY
MARINE DESIGN CENTER
CORPS OF ENGINEERS

SEATTLE DISTRICT - DEBRIS BARGE
120'-0" x 30'-0" x 8'
US Army Corps of Engineers
OUTBOARD PROFILE AND GENERAL ARRANGEMENT

SIZE	MDC PROJECT	DRAWING NUMBER	REV.
D	2916	799-C205-01	-
SCALE: 1/4" = 1'-0"			SHEET: 1 OF 1