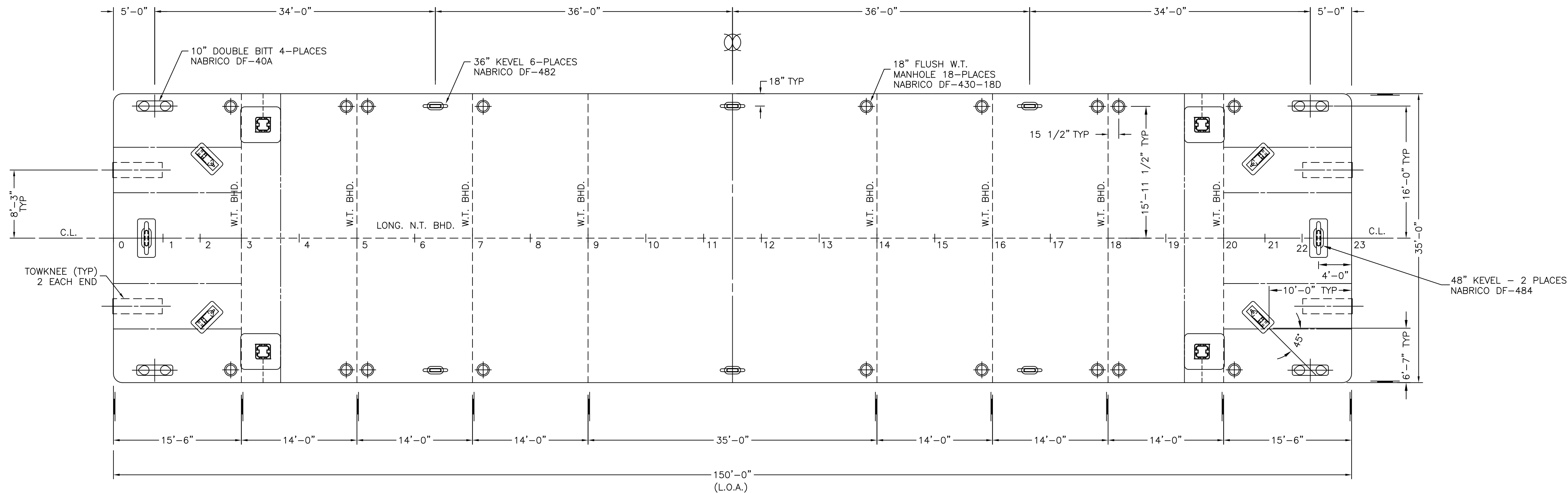
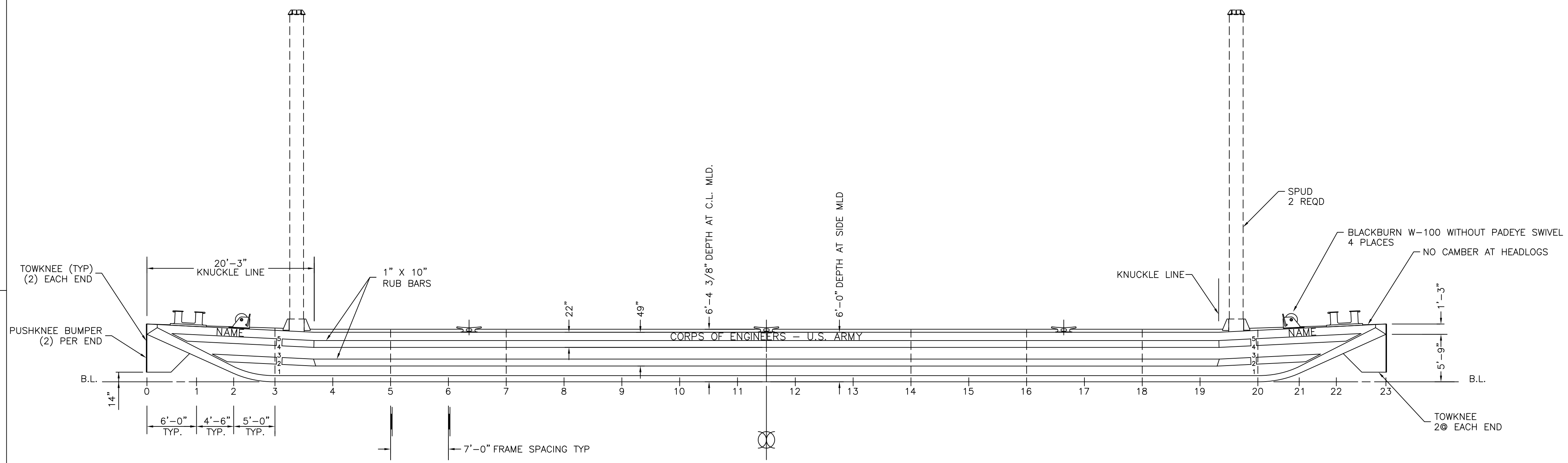
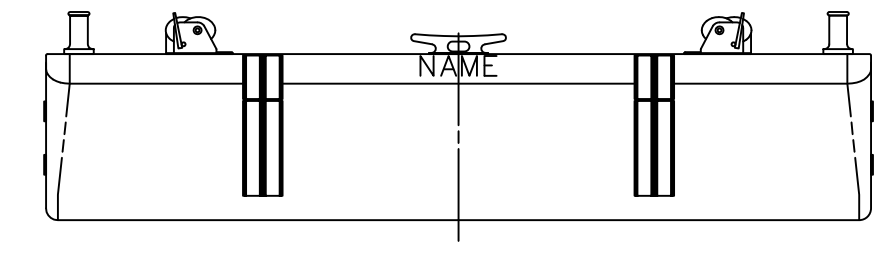


DRAWING NUMBER 537-D215-01		SHEET 1 OF 1	REV -	1
REVISIONS				
ZONE	REV	DESCRIPTION	DATE	APPROVED
ALL	-	FIRST ISSUE - "AS-BUILT" CHANGED DRAWING NUMBER "C" REV 1 TO "D" REV - ADDED VESSEL NAMES TO TABLE ADDED LEVELS AT ENDS RELOCATE WINCHES	09/02/97	



PLAN



PROFILE

PRINCIPAL CHARACTERISTICS

L.O.A.	150'-0"
LENGTH (MOLDED)	149'-10 3/4"
BEAM (OVERALL)	35'-0"
BEAM (MOLDED)	34'-9 1/4"
DEPTH (MOLDED)	6'-0" (AT SIDE)
DEPTH (MOLDED)	6'-4 3/8" (AT C.L.)
DRAFT (LIGHT, MOLDED, F.W.)	1'-3.24"
DRAFT (LOADED, MOLDED, F.W.)	4'-1"
DISPLACEMENT (LIGHTSHIP)	154.32 L.T.
DISPLACEMENT (FULL LOAD)	527.37 L.T.
DECK CARGO	373.05 L.T.
DECK LOADING	1000 p.s.f. (MAXIMUM)
DESIGN KG.	10'-0"
MARGIN LINE	MAIN DECK EDGE
SUBDIVISION	ONE COMPARTMENT
CLASSED A.B.S. + A1 BARGE, DECK CARGO, RIVER SERVICE WITH REINFORCEMENT "B".	

BMI HULL NUMBER	MDC HULL NUMBER	MDC PROJECT NUMBER	VESSEL NAME
96	537	2319	914
97	538	2319	916
101	568	2409	918

BASIC MARINE, INC. P.O. BOX 548 ESCANABA, MI. 49829 (906) 786-7120		DEPARTMENT OF THE ARMY MARINE DESIGN CENTER CORPS OF ENGINEERS	
BMI HULL No. 96, 97 & 101		DECK CARGO BARGE 150'-0" x 35'-0" x 6'-0"	
DRAWN BY: W.G. HITT		GENERAL ARRANGEMENT	
DATE: 22 AUGUST 1997			
APPROVED BY:			
DACW61-96-C-0046	SIZE	MDC PROJECT	DRAWING NUMBER
	D	2319	537-D215-01
TGMD 96063A/D215011-	SCALE: 1/8" = 1'-0"	SHEET: 1 OF 1	