

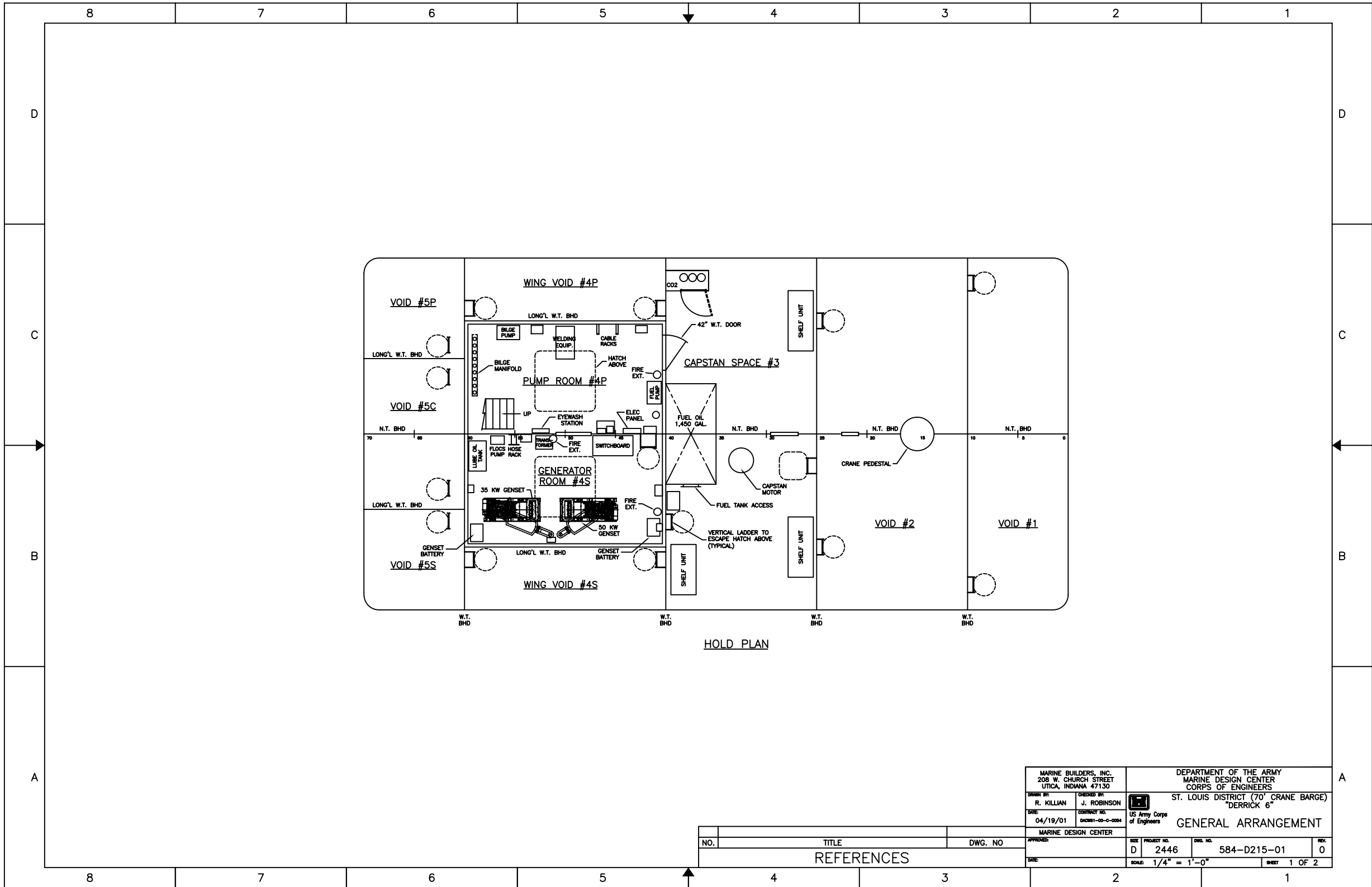
PROFILE

CHARACTERISTICS

LENGTH, MOULDED	70'-0"
BEAM, MOULDED	35'-0"
DEPTH @ CENTERLINE	6'-3"
DEPTH @ SIDE	6'-0"
DESIGN WATERLINE	3'-0"
FUEL OIL CAPACITY	1,450 GALLONS
LUBE OIL CAPACITY	120 GALLONS
WASTE OIL CAPACITY	55 GALLONS
GENERATORS	JOHN DEERE 50 KW JOHN DEERE 35 KW
CAPSTAN	SCHOELLHORN-ALBRECHT 25 H.P.
CRANE	MANTIS 14010

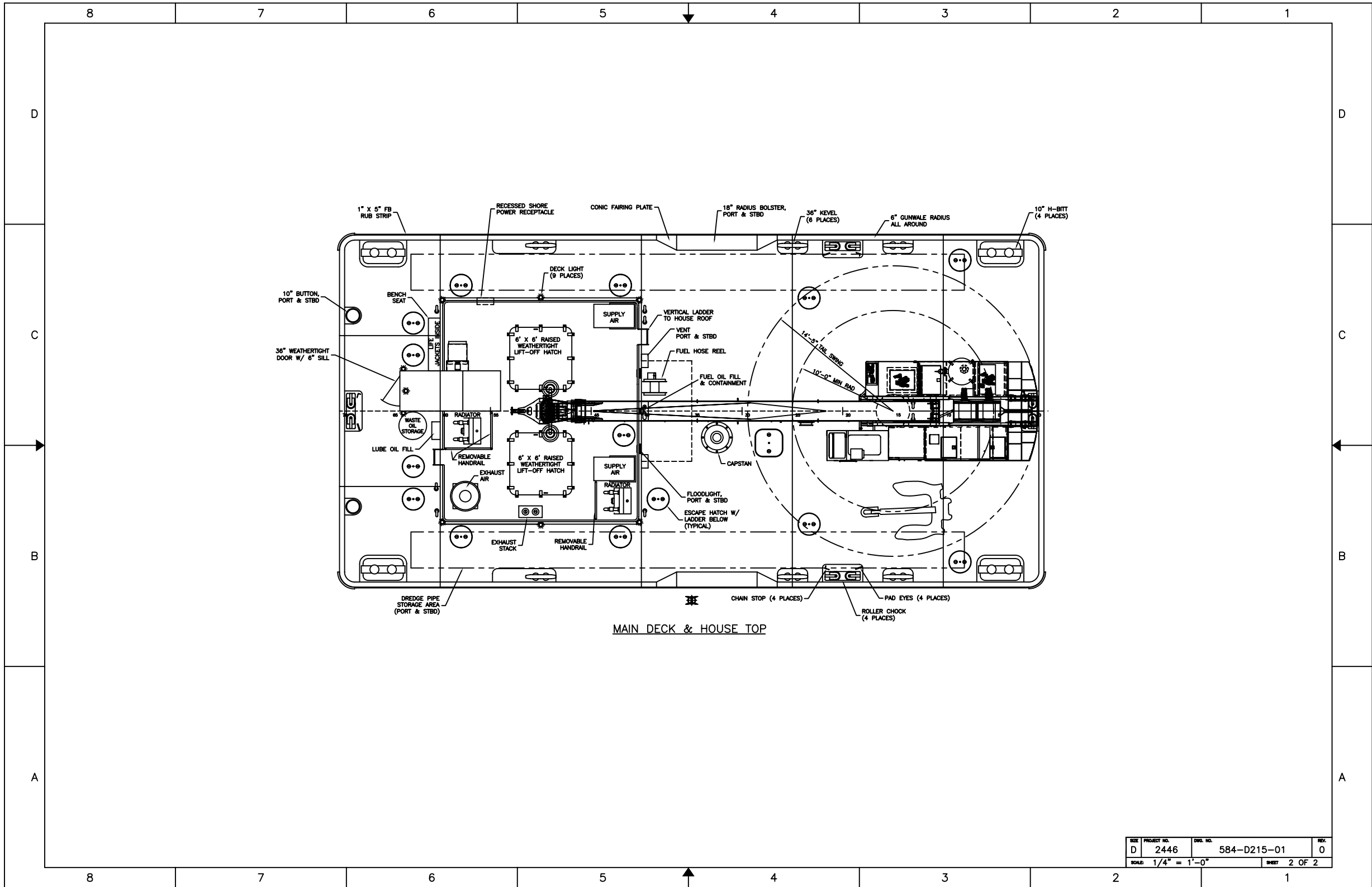
NO.	TITLE	DWG. NO.
REFERENCES		

MARINE BUILDERS, INC. 208 W. CHURCH STREET UTICA, INDIANA 47130		DEPARTMENT OF THE ARMY MARINE DESIGN CENTER CORPS OF ENGINEERS	
DRAWN BY: R. KILLIAN	CHECKED BY: J. ROBINSON	ST. LOUIS DISTRICT (70' CRANE BARGE) "DERRICK 6"	
DATE: 04/19/01	CONTRACT NO. DACW61-00-C-0004	US Army Corps of Engineers	
MARINE DESIGN CENTER		OUTBOARD PROFILE	
APPROVED:	SIZE PROJECT NO. D 2446	DWG. NO. 584-D205-01	REV. 0
DATE:	SCALE: 3/8" = 1'-0"		SHEET 1 OF 1



HOLD PLAN

MARINE BUILDERS, INC. 208 W. CHURCH STREET UTICA, INDIANA 47130		DEPARTMENT OF THE ARMY MARINE DESIGN CENTER CORPS OF ENGINEERS	
DESIGN BY: R. KILLIAN	CHECKED BY: J. ROBINSON	ST. LOUIS DISTRICT (70' CRANE BARGE) "DERRICK 6"	
DATE: 04/19/01	CONTRACT NO.: DACW61-00-C-0064	US Army Corps of Engineers	
MARINE DESIGN CENTER		GENERAL ARRANGEMENT	
NO.	TITLE	DWG. NO.	REV.
	REFERENCES		
		SIZE PROJECT NO. DWG. NO.	REV.
		D 2446 584-D215-01	0
		SCALE: 1/4" = 1'-0"	SHEET 1 OF 2



SIZE	PROJECT NO.	DRW. NO.	REV.
D	2446	584-D215-01	0
SCALE: 1/4" = 1'-0"		SHEET 2 OF 2	