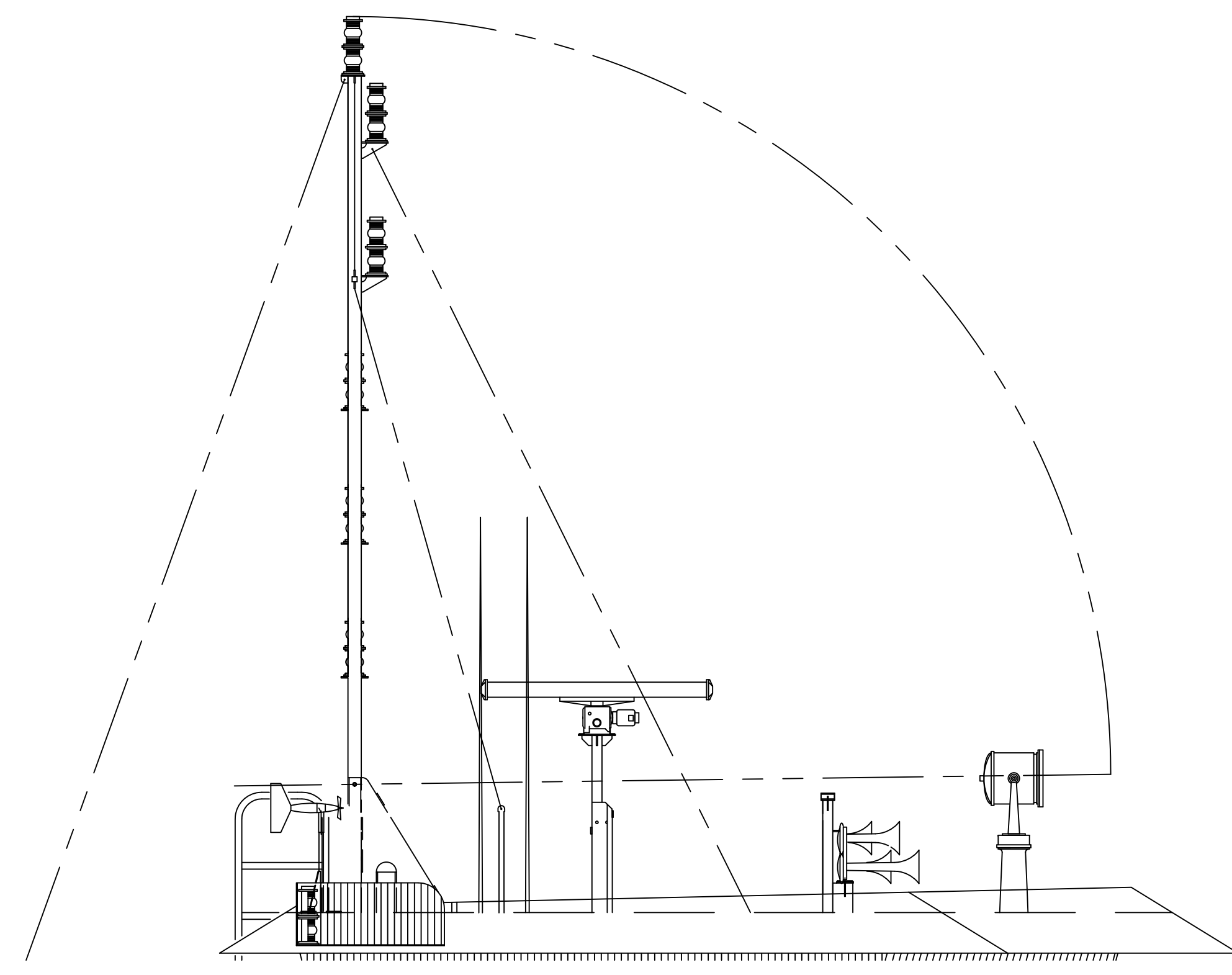
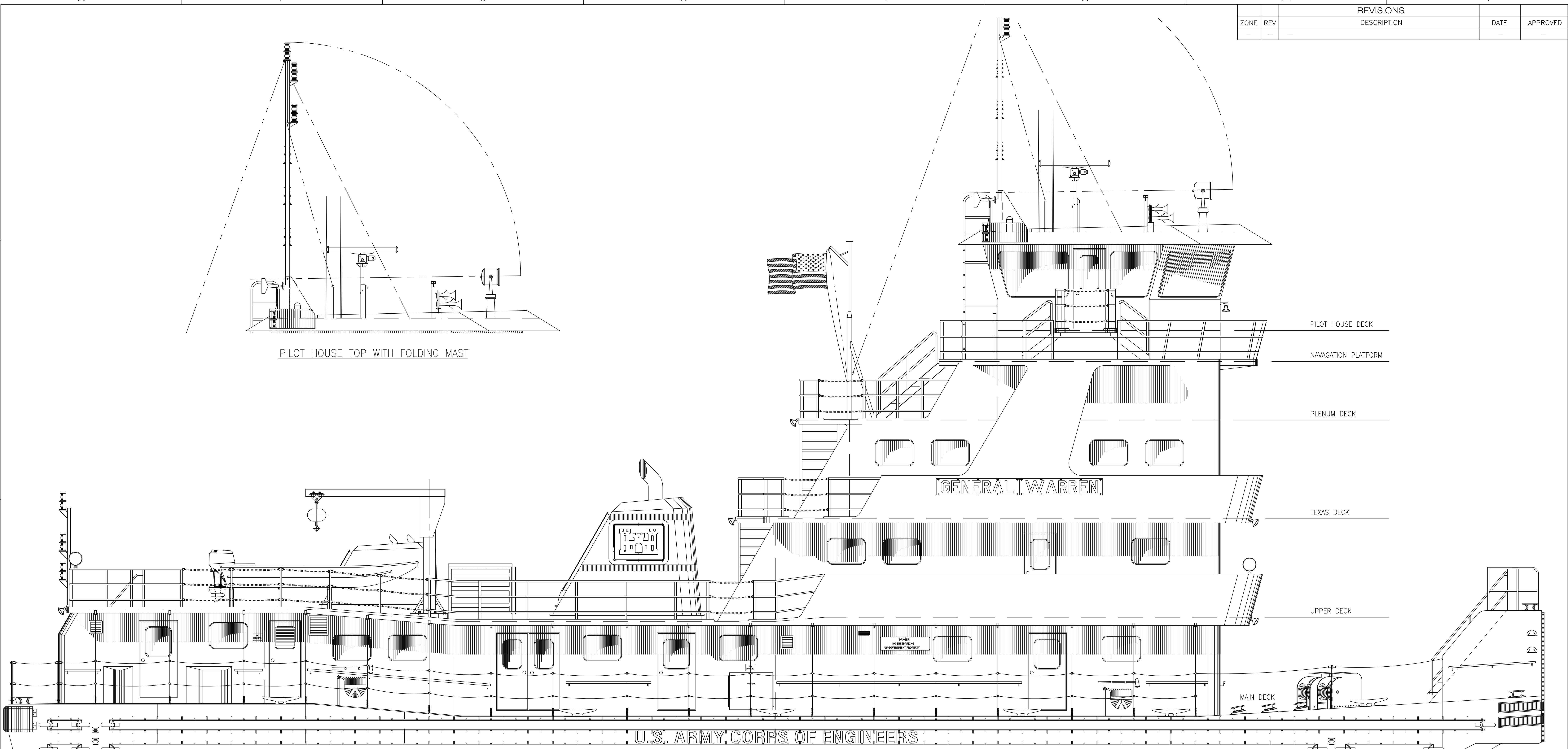


ZONE		REV		REVISIONS		DATE	APPROVED
				DESCRIPTION			
-	-	-	-			-	-



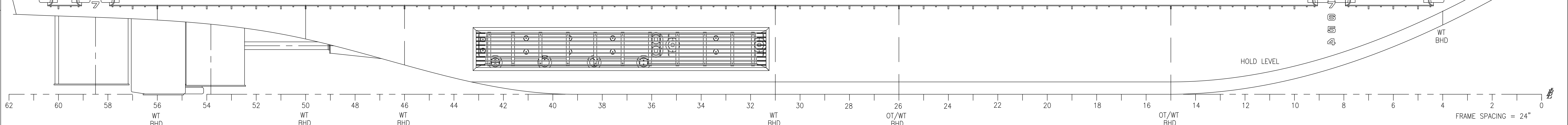
PILOT HOUSE TOP WITH FOLDING MAST



- PILOT HOUSE DECK
- NAVIGATION PLATFORM
- PLENUM DECK
- TEXAS DECK
- UPPER DECK
- MAIN DECK

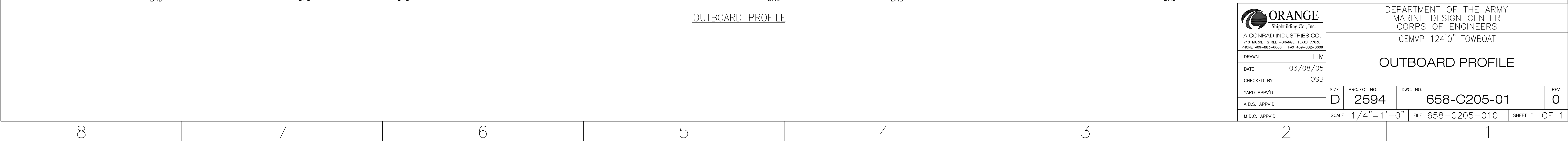
GENERAL I. WARREN

U.S. ARMY CORPS OF ENGINEERS



OUTBOARD PROFILE

<p>ORANGE Shipbuilding Co., Inc. A CONRAD INDUSTRIES CO. 710 MARKET STREET-ORANGE, TEXAS 77630 PHONE: 409-883-8866 FAX: 409-883-0508</p>	DEPARTMENT OF THE ARMY MARINE DESIGN CENTER CORPS OF ENGINEERS CEMVP 124'0" TOWBOAT		
	<b>OUTBOARD PROFILE</b>		
DRAWN: TTM DATE: 03/08/05 CHECKED BY: OSB YARD APPV'D: A.B.S. APPV'D: M.D.C. APPV'D:	SIZE: D PROJECT NO.: 2594 SCALE: 1/4" = 1'-0"	DWG. NO.: 658-C205-01 FILE: 658-C205-010	REV: 0 SHEET 1 OF 1



FRAME SPACING = 24"

WT BHD  
OT/WT BHD

HOLD LEVEL

8 7 6 5 4 3 2 1

8 7 6 5 4 3 2 1