

STA. 184+126 to STA. 194+000 -- 31 MAR 25
 STA. 194+000 to STA. 197+000 -- 17 APR 25
 STA. 197+000 to STA. 203+000 -- 15 APR 25
 STA. 203+000 to STA. 213+000 -- 04 APR 25

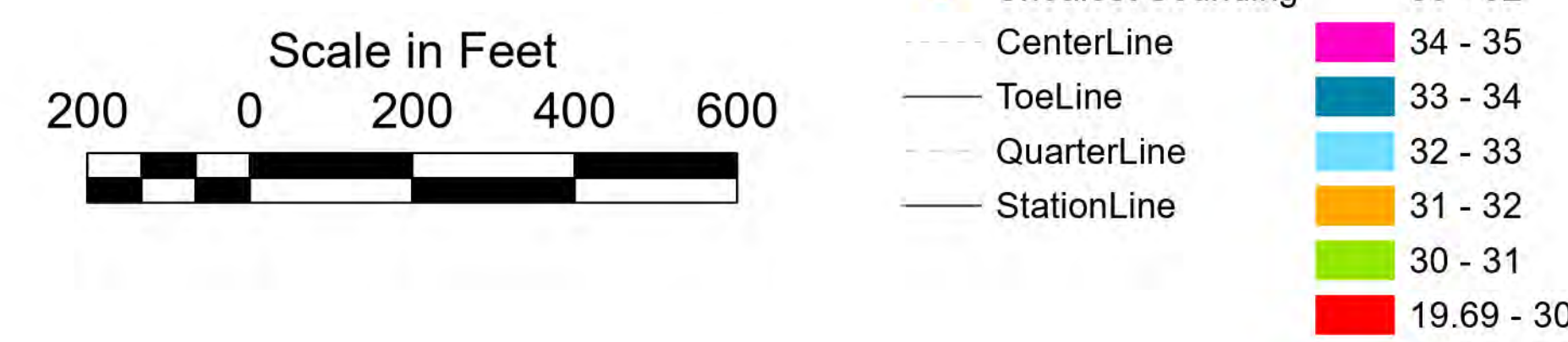
THE DATA... This data is provided for general information only. It is not intended for navigation. The data was collected using a single beam echosounder and is subject to measurement errors. The data is not intended for use in any legal proceedings. The data is provided as a courtesy and is not a warranty. The data is provided as a courtesy and is not a warranty. The data is provided as a courtesy and is not a warranty.

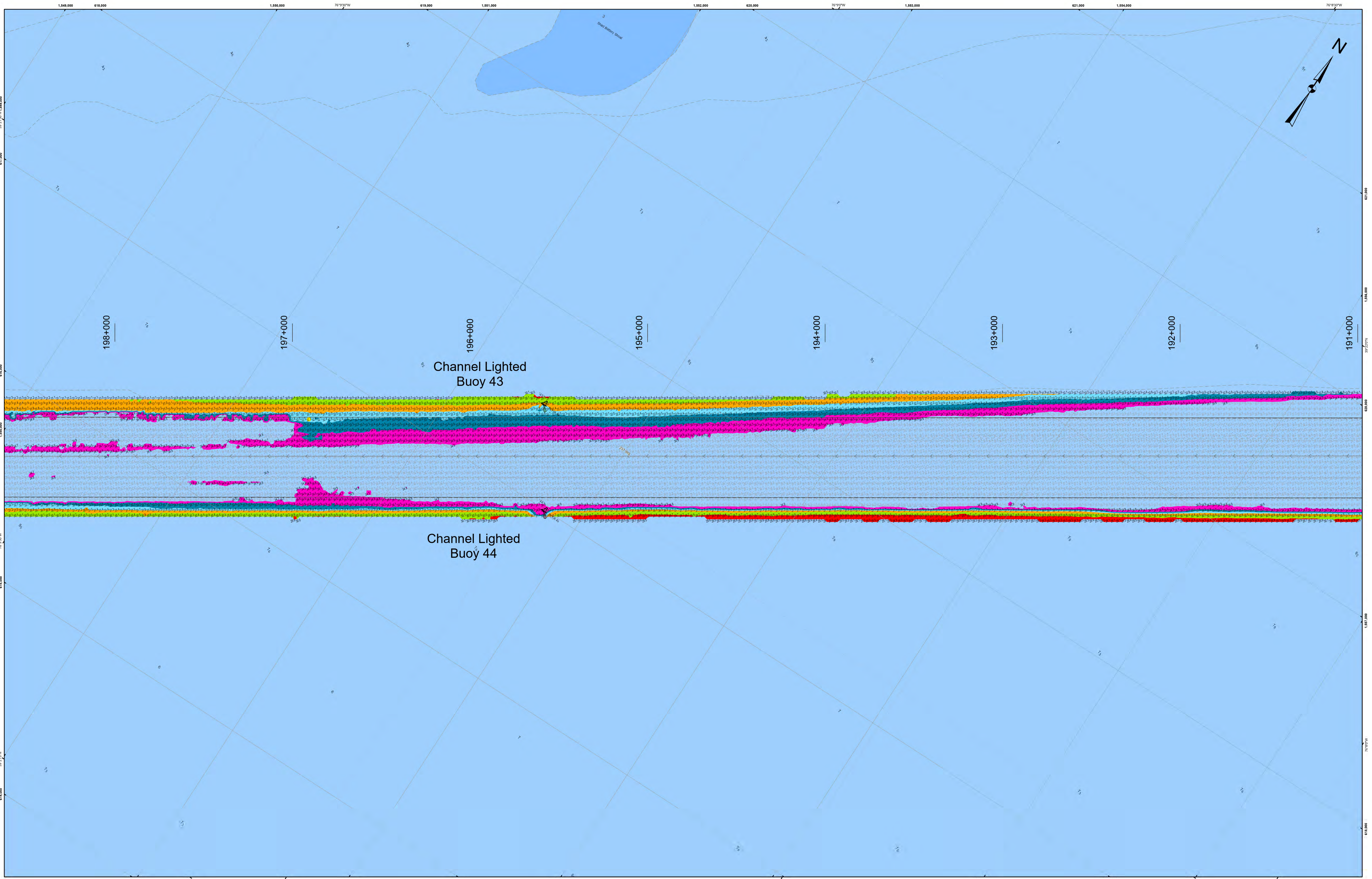
Surveyed By	Philadelphia District
Drawn By	
Plotted By	
Checked By	
Approved By	

Chesapeake Bay Approach Channel
Howell Point to
Worton Point
Examination
STA. 184+125 to STA. 211+000



- THIS SURVEY MEETS STANDARDS AS OUTLINED IN CORPS OF ENGINEERS' HYDROGRAPHIC SURVEY MANUAL EM1110-2-1003, DATED NOVEMBER 30, 2013 FOR NAVIGATION AND DREDGING SUPPORT SURVEYS.
- HORIZONTAL REFERENCE - NAD 83, MARYLAND STATE PLANE, ZONE 1900, U.S. FOOT.
- VERTICAL REFERENCE - MEAN LOWER LOW WATER, WHICH IS BELOW N.A.D. 88 BY THE FOLLOWING:
 0.98' FROM STA. 183+000 TO STA. 203+154.89
 0.99' FROM STA. 203+154.89 TO STA. 211+000
- GEOID 12b AND NOAA TIDAL EPOCH: 1983 - 2001 WERE USED. SOUNDINGS ARE EXPRESSED IN FEET AND TENTHS AND REFER TO MEAN LOWER LOW WATER.
- SOUNDINGS WERE SELECTED FOR PLOTTING PURPOSES ONLY, USING THE MINIMUM DEPTH WITHIN A 30'X30' CELL SHIFTED TO THE CELL CENTER.
- CONTOURS DEPICT ACTUAL LOCATION OF BATHYMETRY AND DO NOT NECESSARILY REFLECT PLOTTED SOUNDING LOCATIONS.
- CONTOURS WERE GENERATED USING THE MINIMUM DEPTH WITHIN A 15'X15' CELL.
- HYPACK, INC. SOFTWARE WAS USED TO PERFORM THE SOUNDING SELECTION AND CONTOUR GENERATION.
- THE INFORMATION DEPICTED ON THIS MAP REPRESENT THE RESULTS OF SURVEYS MADE ON THE DATES INDICATED AND CAN ONLY BE CONSIDERED AS INDICATING THE GENERAL CONDITIONS EXISTING AT THAT TIME.
- THE POSITIONS OF THE AIDS TO NAVIGATION ARE PROVIDED FOR INFORMATION ONLY, AND SHOULD NOT BE USED FOR NAVIGATION.
- THE LIMITS OF THE FEDERAL CHANNEL DEPICT THE MOST CURRENT CHANNEL FRAMEWORK AVAILABLE WHICH CAN ALSO BE DOWNLOADED HERE:
<http://navigation.usace.army.mil/Survey/Framework>
- BASE MAPPING LINEWORK OR ORTHOPHOTOGRAPHY HAS BEEN COMPILED FROM A VARIETY OF SOURCES AND DATES AND IS INTENDED TO PORTRAY GENERAL CHARACTERISTICS OF THE SHORELINE AND OTHER FEATURES. TEMPORAL CHANGES MAY HAVE OCCURRED SINCE THIS DATA SET WAS COLLECTED AND SOME PARTS OF THE DATA MAY NO LONGER BE AN ACCURATE REPRESENTATION OF THE SURFACE CONDITIONS.



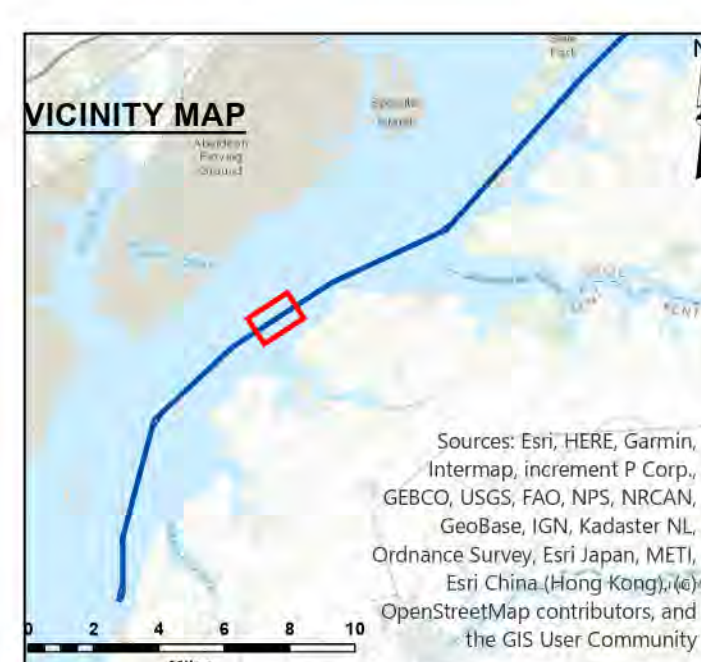


STA. 184+126 to STA. 194+000 -- 31 MAR 25
 STA. 194+000 to STA. 197+000 -- 17 APR 25
 STA. 197+000 to STA. 203+000 -- 15 APR 25
 STA. 203+000 to STA. 213+000 -- 04 APR 25

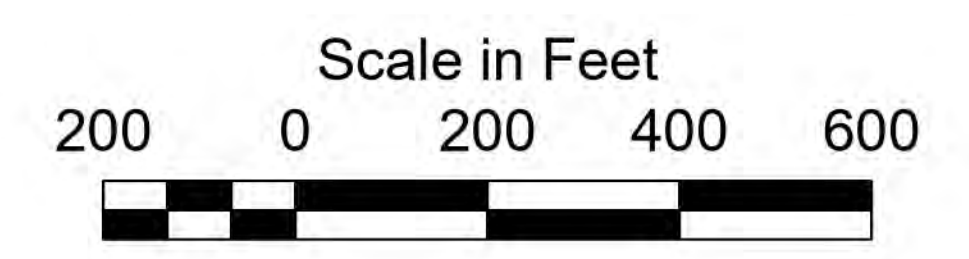
This data is provided for general information only. It is not intended for use in navigation. The data was collected using a hypack system and is subject to the accuracy of the data collection process. The data is provided as-is and the user assumes all responsibility for its use. The data is not to be used for any purpose other than that for which it was collected.

Surveyed By:	U.S. ARMY CORPS OF ENGINEERS Philadelphia District
Traced By:	
Plot Scale:	
Approved:	Chief Survey Station

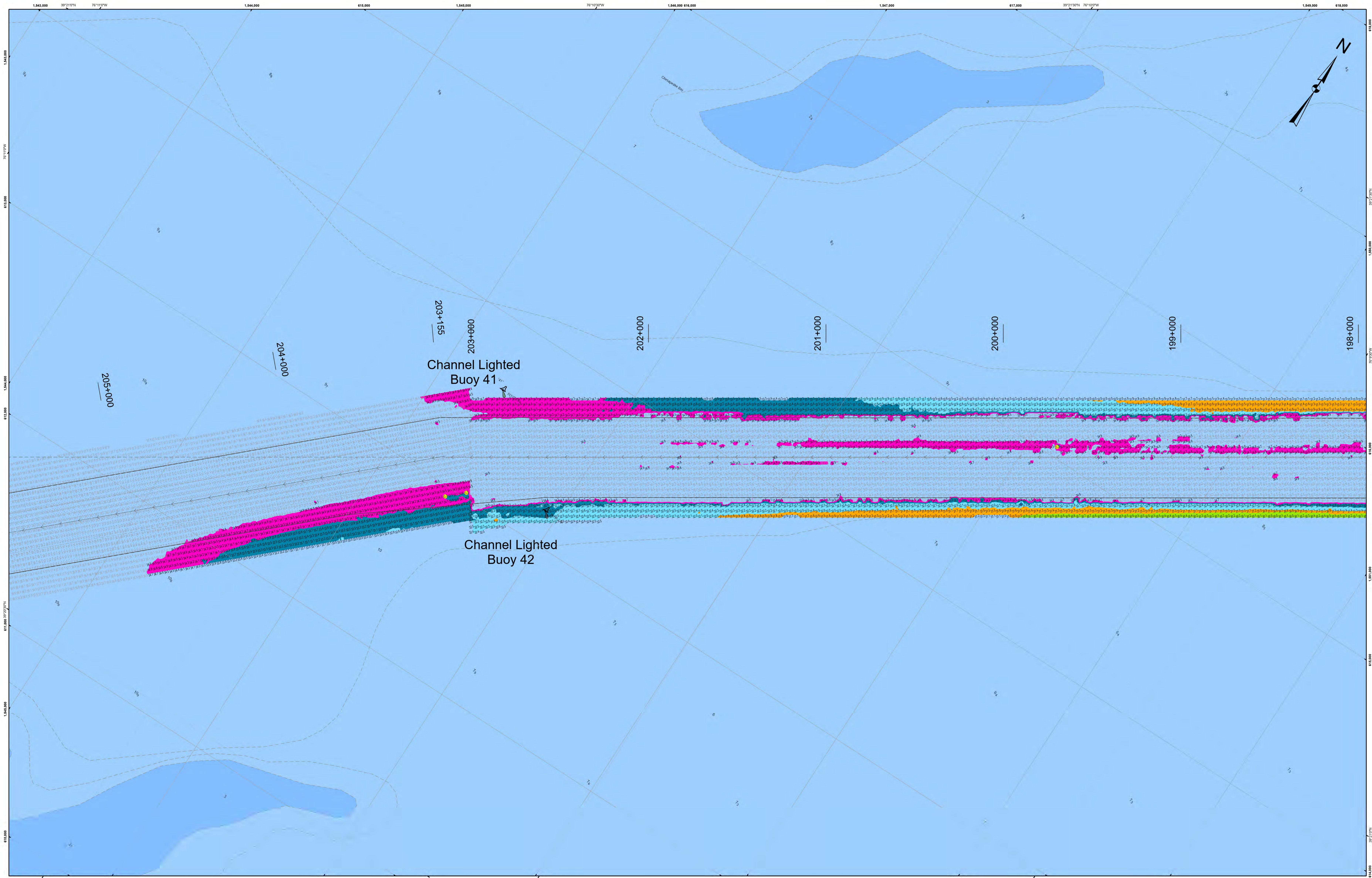
Chesapeake Bay Approach Channel
 Howell Point to
 Worton Point
 Examination
 STA. 184+126 to STA. 211+000



- THIS SURVEY MEETS STANDARDS AS OUTLINED IN CORPS OF ENGINEERS' HYDROGRAPHIC SURVEY MANUAL EM1110-2-1003, DATED NOVEMBER 30, 2013 FOR NAVIGATION AND DREDGING SUPPORT SURVEYS.
- HORIZONTAL REFERENCE - NAD 83, MARYLAND STATE PLANE, ZONE 1900, U.S. FOOT.
- VERTICAL REFERENCE - MEAN LOWER LOW WATER, WHICH IS BELOW N.A.V.D. 88 BY THE FOLLOWING:
 0.98' FROM STA. 183+000 TO STA. 203+154.89
 0.99' FROM STA. 203+154.89 TO STA. 211+000
- GEOID 12b AND NOAA TIDAL EPOCH: 1983 - 2001 WERE USED. SOUNDINGS ARE EXPRESSED IN FEET AND TENTHS AND REFER TO MEAN LOWER LOW WATER.
- SOUNDINGS WERE SELECTED FOR PLOTTING PURPOSES ONLY, USING THE MINIMUM DEPTH WITHIN A 30'X30' CELL SHIFTED TO THE CELL CENTER.
- CONTOURS DEPICT ACTUAL LOCATION OF BATHYMETRY AND DO NOT NECESSARILY REFLECT PLOTTED SOUNDING LOCATIONS.
- CONTOURS WERE GENERATED USING THE MINIMUM DEPTH WITHIN A 15'X15' CELL.
- HYPACK, INC. SOFTWARE WAS USED TO PERFORM THE SOUNDING SELECTION AND CONTOUR GENERATION.
- THE INFORMATION DEPICTED ON THIS MAP REPRESENT THE RESULTS OF SURVEYS MADE ON THE DATES INDICATED AND CAN ONLY BE CONSIDERED AS INDICATING THE GENERAL CONDITIONS EXISTING AT THAT TIME.
- THE POSITIONS OF THE AIDS TO NAVIGATION ARE PROVIDED FOR INFORMATION ONLY, AND SHOULD NOT BE USED FOR NAVIGATION.
- THE LIMITS OF THE FEDERAL CHANNEL DEPICT THE MOST CURRENT CHANNEL FRAMEWORK AVAILABLE WHICH CAN ALSO BE DOWNLOADED HERE:
<http://navigation.usace.army.mil/Survey/Framework>
- BASE MAPPING LINENWORK OR ORTHOPHOTOGRAPHY HAS BEEN COMPILED FROM A VARIETY OF SOURCES AND DATES AND IS INTENDED TO PORTRAY GENERAL CHARACTERISTICS OF THE SHORELINE AND OTHER FEATURES. TEMPORAL CHANGES MAY HAVE OCCURRED SINCE THIS DATA SET WAS COLLECTED AND SOME PARTS OF THE DATA MAY NO LONGER BE AN ACCURATE REPRESENTATION OF THE SURFACE CONDITIONS.



Shoalest Sounding	35 - 52
CenterLine	34 - 35
ToeLine	33 - 34
QuarterLine	32 - 33
StationLine	31 - 32
	30 - 31
	19.69 - 30



STA. 184+126 to STA. 194+000 -- 31 MAR 25
 STA. 194+000 to STA. 197+000 -- 17 APR 25
 STA. 197+000 to STA. 203+000 -- 15 APR 25
 STA. 203+000 to STA. 213+000 -- 04 APR 25

This data is provided for general information only. It is not intended for use in navigation. The data was collected using a surveying instrument and is subject to the accuracy of the instrument and the skill of the operator. The data is not intended for use in navigation and should not be used for navigation purposes. The data is provided for informational purposes only and should not be used for navigation purposes.

Surveyed By:	Philadelphia District
Drawn By:	
Checked By:	
Approved:	Chief Survey Station

Chesapeake Bay Approach Channel
 Howell Point to Worton Point Examination
 STA. 184+126 to STA. 211+000

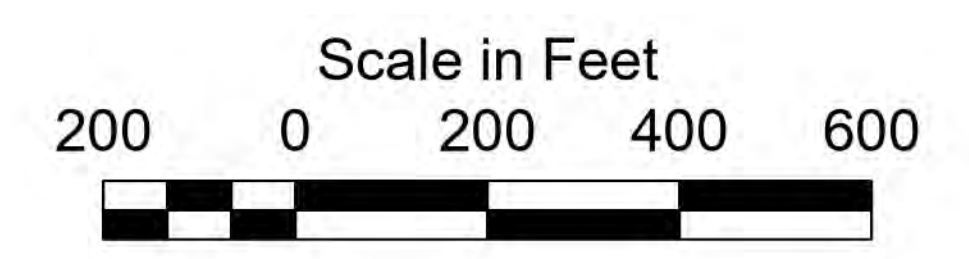


- THIS SURVEY MEETS STANDARDS AS OUTLINED IN CORPS OF ENGINEERS' HYDROGRAPHIC SURVEY MANUAL EM1110-2-1003, DATED NOVEMBER 30, 2013 FOR NAVIGATION AND DREDGING SUPPORT SURVEYS.
- HORIZONTAL REFERENCE - NAD 83, MARYLAND STATE PLANE, ZONE 1900, U.S. FOOT.
- VERTICAL REFERENCE - MEAN LOWER LOW WATER, WHICH IS BELOW N.A.V.D. 88 BY THE FOLLOWING:
 0.98' FROM STA. 183+000 TO STA. 203+154.89
 0.99' FROM STA. 203+154.89 TO STA. 211+000
- GEOID 12b AND NOAA TIDAL EPOCH: 1983 - 2001 WERE USED. SOUNDINGS ARE EXPRESSED IN FEET AND TENTHS AND REFER TO MEAN LOWER LOW WATER.

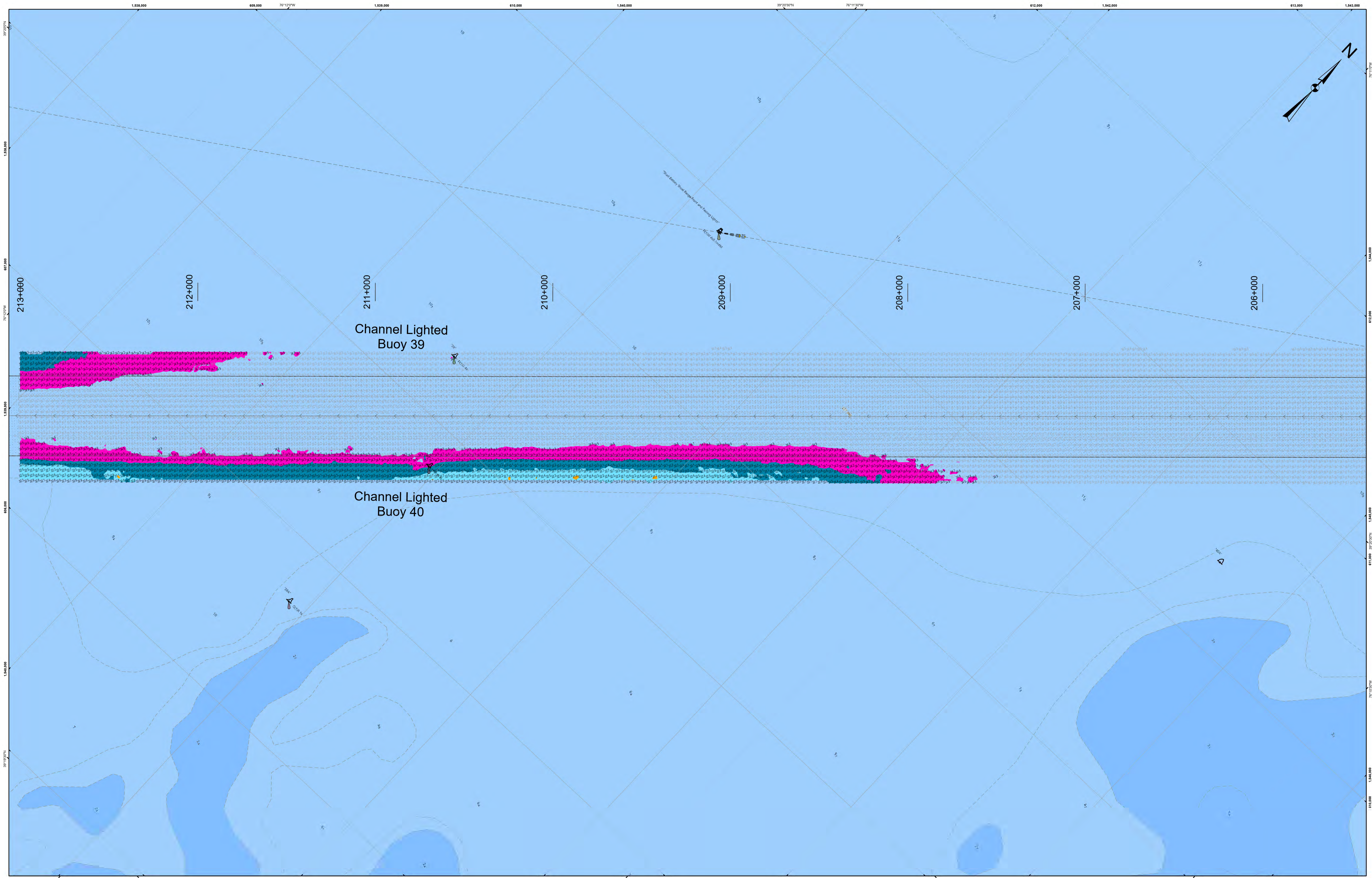
- SOUNDINGS WERE SELECTED FOR PLOTTING PURPOSES ONLY, USING THE MINIMUM DEPTH WITHIN A 30'X30' CELL, SHIFTED TO THE CELL CENTER.
- CONTOURS DEPICT ACTUAL LOCATION OF BATHYMETRY AND DO NOT NECESSARILY REFLECT PLOTTED SOUNDING LOCATIONS.
- CONTOURS WERE GENERATED USING THE MINIMUM DEPTH WITHIN A 15'X15' CELL.
- HYPACK, INC. SOFTWARE WAS USED TO PERFORM THE SOUNDING SELECTION AND CONTOUR GENERATION.
- THE INFORMATION DEPICTED ON THIS MAP REPRESENT THE RESULTS OF SURVEYS MADE ON THE DATES INDICATED AND CAN ONLY BE CONSIDERED AS INDICATING THE GENERAL CONDITIONS EXISTING AT THAT TIME.

- THE POSITIONS OF THE AIDS TO NAVIGATION ARE PROVIDED FOR INFORMATION ONLY, AND SHOULD NOT BE USED FOR NAVIGATION.
- THE LIMITS OF THE FEDERAL CHANNEL DEPICT THE MOST CURRENT CHANNEL FRAMEWORK AVAILABLE WHICH CAN ALSO BE DOWNLOADED HERE:
<http://navigation.usace.army.mil/Survey/Framework>

12. BASE MAPPING LINEWORK OR ORTHOPHOTOGRAPHY HAS BEEN COMPILED FROM A VARIETY OF SOURCES AND DATES AND IS INTENDED TO PORTRAY GENERAL CHARACTERISTICS OF THE SHORELINE AND OTHER FEATURES. TEMPORAL CHANGES MAY HAVE OCCURRED SINCE THIS DATA SET WAS COLLECTED AND SOME PARTS OF THE DATA MAY NO LONGER BE AN ACCURATE REPRESENTATION OF THE SURFACE CONDITIONS.



Shoalest Sounding	35 - 52
CenterLine	34 - 35
ToeLine	33 - 34
QuarterLine	32 - 33
StationLine	31 - 32
	30 - 31
	19.69 - 30



STA. 184+126 to STA. 194+000 -- 31 MAR 25
 STA. 194+000 to STA. 197+000 -- 17 APR 25
 STA. 197+000 to STA. 203+000 -- 15 APR 25
 STA. 203+000 to STA. 213+000 -- 04 APR 25

This data is provided for general information only. It is not intended for use in navigation. The Corps of Engineers does not warrant the accuracy of the data for any purpose other than that for which it was collected. The Corps of Engineers is not responsible for any errors or omissions in this data. The user assumes all liability for the use of this data.

Drawn By:	Surveyed By:
Phil Scale:	Philadelphia District
Approved:	
Chief, Survey Section:	

Chesapeake Bay Approach Channel
Howell Point to
Worton Point
Examination
STA. 184+126 to STA. 211+000

E-CD-134



- THIS SURVEY MEETS STANDARDS AS OUTLINED IN CORPS OF ENGINEERS' HYDROGRAPHIC SURVEY MANUAL EM1110-2-1003, DATED NOVEMBER 30, 2013 FOR NAVIGATION AND DREDGING SUPPORT SURVEYS.
- HORIZONTAL REFERENCE - NAD 83, MARYLAND STATE PLANE, ZONE 1900, U.S. FOOT.
- VERTICAL REFERENCE - MEAN LOWER LOW WATER, WHICH IS BELOW N.A.V.D. 88 BY THE FOLLOWING:
 0.98' FROM STA. 183+000 TO STA. 203+154.89
 0.99' FROM STA. 203+154.89 TO STA. 211+000
- GEOD 12b AND NOAA TIDAL EPOCH: 1983 - 2001 WERE USED. SOUNDINGS ARE EXPRESSED IN FEET AND TENTHS AND REFER TO MEAN LOWER LOW WATER.
- SOUNDINGS WERE SELECTED FOR PLOTTING PURPOSES ONLY, USING THE MINIMUM DEPTH WITHIN A 30'X30' CELL, SHIFTED TO THE CELL CENTER.
- CONTOURS DEPICT ACTUAL LOCATION OF BATHYMETRY AND DO NOT NECESSARILY REFLECT PLOTTED SOUNDING LOCATIONS.
- CONTOURS WERE GENERATED USING THE MINIMUM DEPTH WITHIN A 15'X15' CELL.
- HYPACK, INC. SOFTWARE WAS USED TO PERFORM THE SOUNDING SELECTION AND CONTOUR GENERATION.
- THE INFORMATION DEPICTED ON THIS MAP REPRESENT THE RESULTS OF SURVEYS MADE ON THE DATES INDICATED AND CAN ONLY BE CONSIDERED AS INDICATING THE GENERAL CONDITIONS EXISTING AT THAT TIME.
- THE POSITIONS OF THE AIDS TO NAVIGATION ARE PROVIDED FOR INFORMATION ONLY, AND SHOULD NOT BE USED FOR NAVIGATION.
- THE LIMITS OF THE FEDERAL CHANNEL DEPICT THE MOST CURRENT CHANNEL FRAMEWORK AVAILABLE WHICH CAN ALSO BE DOWNLOADED HERE:
<http://navigation.usace.army.mil/Survey/Framework>
- BASE MAPPING LINEWORK OR ORTHOPHOTOGRAPHY HAS BEEN COMPILED FROM A VARIETY OF SOURCES AND DATES AND IS INTENDED TO PORTRAY GENERAL CHARACTERISTICS OF THE SHORELINE AND OTHER FEATURES. TEMPORAL CHANGES MAY HAVE OCCURRED SINCE THIS DATA SET WAS COLLECTED AND SOME PARTS OF THE DATA MAY NO LONGER BE AN ACCURATE REPRESENTATION OF THE SURFACE CONDITIONS.

