

HORIZONTAL REFERENCE - NAD 83, DELAWARE STATE PLANE, ZONE 0700, U.S. FOOT.

VERTICAL REFERENCE - MEAN LOWER LOW WATER, WHICH IS BELOW N.A.V.D. 88 BY THE FOLLOWING:

2.63' FROM 19+586 TO 26+500
2.40' FROM 26+500 TO 30+500
2.30' FROM 30+500 TO 34+500
2.20' FROM 34+500 TO 37+500
2.00' FROM 37+500 TO 40+500
1.80' FROM 40+500 TO 44+500
1.70' FROM 44+500 TO 47+500
1.50' FROM 47+500 TO 51+000
1.20' FROM 51+000 TO 54+500
1.00' FROM 54+500 TO 59+082

GEOD 12B AND NOAA TIDAL EPOCH: 1983 - 2001 WERE USED. SOUNDINGS ARE EXPRESSED IN FEET AND TENTHS AND REFER TO MEAN LOWER LOW WATER.

CONTOURS DEPICT ACTUAL LOCATION OF BATHYMETRY AND DO NOT NECESSARILY REFLECT PLOTTED SOUNDING LOCATIONS.

CONTOURS WERE GENERATED USING THE MINIMUM DEPTH WITHIN SEARCH RADIUS OF 8'.

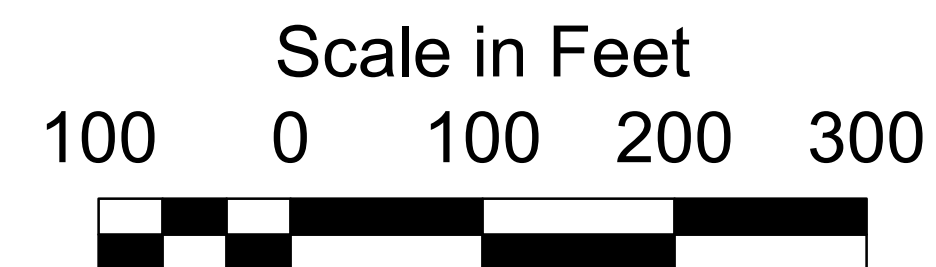
THE INFORMATION DEPICTED ON THIS MAP REPRESENT THE RESULTS OF SURVEYS MADE ON THE DATES INDICATED AND CAN ONLY BE CONSIDERED AS INDICATING THE GENERAL CONDITIONS EXISTING AT THAT TIME.

THE POSITIONS OF THE AIDS TO NAVIGATION ARE PROVIDED FOR INFORMATION ONLY, AND SHOULD NOT BE USED FOR NAVIGATION.

THE LIMITS OF THE FEDERAL CHANNEL DEPICT THE MOST CURRENT CHANNEL FRAMEWORK AVAILABLE WHICH CAN ALSO BE DOWNLOADED HERE:

<http://navigation.usace.army.mil/Survey/Framework>

BASE MAPPING LINEWORK OR ORTHOPHOTOGRAPHY HAS BEEN COMPILED FROM A VARIETY OF SOURCES AND DATES AND IS INTENDED TO PORTRAY GENERAL CHARACTERISTICS OF THE SHORELINE AND OTHER FEATURES. TEMPORAL CHANGES MAY HAVE OCCURRED SINCE THIS DATA SET WAS COLLECTED AND SOME PARTS OF THE DATA MAY NO LONGER BE AN ACCURATE REPRESENTATION OF THE SURFACE CONDITIONS.



- Shoalest Sounding
- 6' Curve of Depth
- CenterLine
- ToeLine
- StationLine

US Army Corps of Engineers
Philadelphia District

STA. 19+586 to STA. 59+082 -- 27, 28 & 29 FEB 24

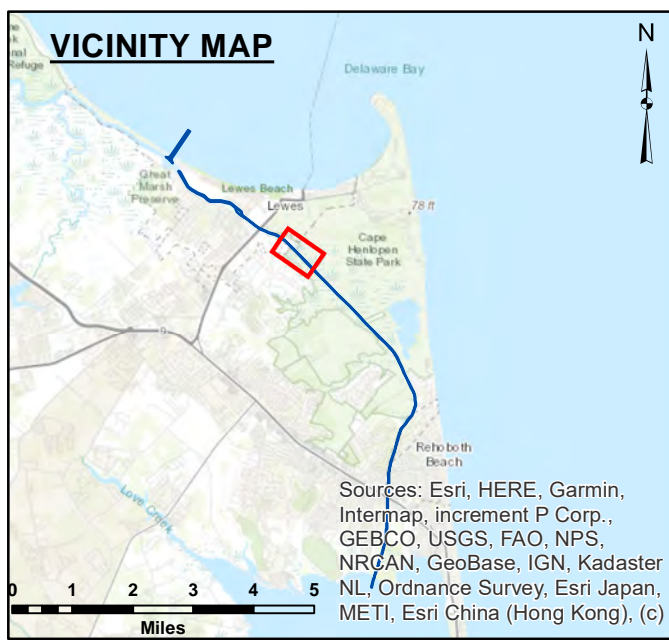
The information provided is for informational purposes only. It is not intended to be used for navigation. The information is provided as a service to the public and is not intended to be used for navigation. The information is provided as a service to the public and is not intended to be used for navigation.

U.S. ARMY CORPS OF ENGINEERS
PHILADELPHIA DISTRICT

Drawn By: _____
Checked By: _____
E. Anthony

INLAND WATERWAY
SAVANNAH ROAD BRIDGE TO REHOBOTH BAY
LEWES AND REHOBOTH CANAL, DELAWARE

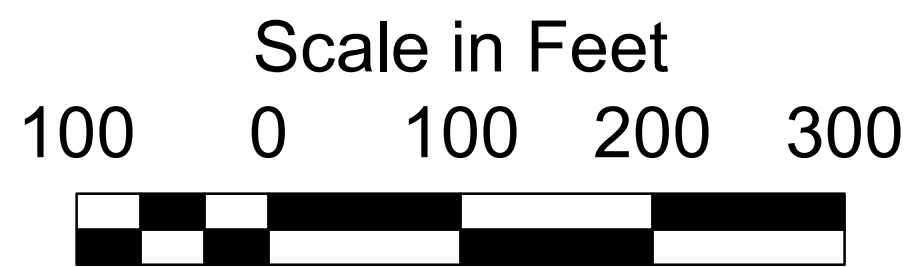
E-LR-07



HORIZONTAL REFERENCE - NAD 83, DELAWARE STATE PLANE, ZONE 0700, U.S. FOOT.
VERTICAL REFERENCE - MEAN LOWER LOW WATER, WHICH IS BELOW N.A.V.D. 88 BY THE FOLLOWING:
2.63' FROM 19+586 TO 26+500
2.40' FROM 26+500 TO 30+500
2.30' FROM 30+500 TO 34+000
2.20' FROM 34+000 TO 37+500
2.00' FROM 37+500 TO 40+500
1.80' FROM 40+500 TO 44+500
1.70' FROM 44+500 TO 47+500
1.50' FROM 47+500 TO 51+000
1.20' FROM 51+000 TO 54+500
1.00' FROM 54+500 TO 59+082
GEOID 12B AND NOAA TIDAL EPOCH: 1983 - 2001 WERE USED. SOUNDINGS ARE EXPRESSED IN FEET AND TENTHS AND REFER TO MEAN LOWER LOW WATER.

CONTOURS DEPICT ACTUAL LOCATION OF BATHYMETRY AND DO NOT NECESSARILY REFLECT PLOTTED SOUNDING LOCATIONS.
CONTOURS WERE GENERATED USING THE MINIMUM DEPTH WITHIN SEARCH RADIUS OF 8'.
THE INFORMATION DEPICTED ON THIS MAP REPRESENT THE RESULTS OF SURVEYS MADE ON THE DATES INDICATED AND CAN ONLY BE CONSIDERED AS INDICATING THE GENERAL CONDITIONS EXISTING AT THAT TIME.

THE POSITIONS OF THE AIDS TO NAVIGATION ARE PROVIDED FOR INFORMATION ONLY, AND SHOULD NOT BE USED FOR NAVIGATION.
THE LIMITS OF THE FEDERAL CHANNEL DEPICT THE MOST CURRENT CHANNEL FRAMEWORK AVAILABLE WHICH CAN ALSO BE DOWNLOADED HERE:
<http://navigation.usace.army.mil/Survey/Framework>
BASE MAPPING LINEWORK OR ORTHOPHOTOGRAPHY HAS BEEN COMPILED FROM A VARIETY OF SOURCES AND DATES AND IS INTENDED TO PORTRAY GENERAL CHARACTERISTICS OF THE SHORELINE AND OTHER FEATURES. TEMPORAL CHANGES MAY HAVE OCCURRED SINCE THIS DATA SET WAS COLLECTED AND SOME PARTS OF THE DATA MAY NO LONGER BE AN ACCURATE REPRESENTATION OF THE SURFACE CONDITIONS.



- Shoalest Sounding
- 6' Curve of Depth
- CenterLine
- ToeLine
- StationLine

US Army Corps of Engineers
Philadelphia District

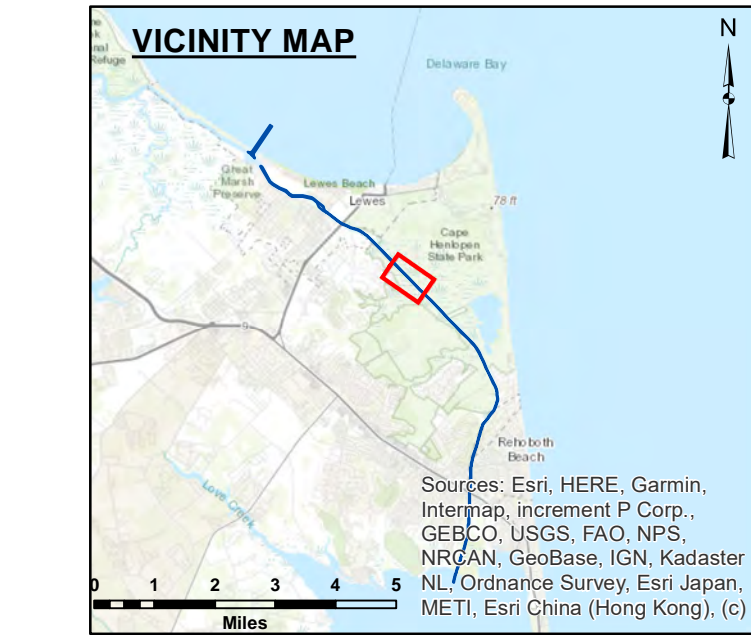
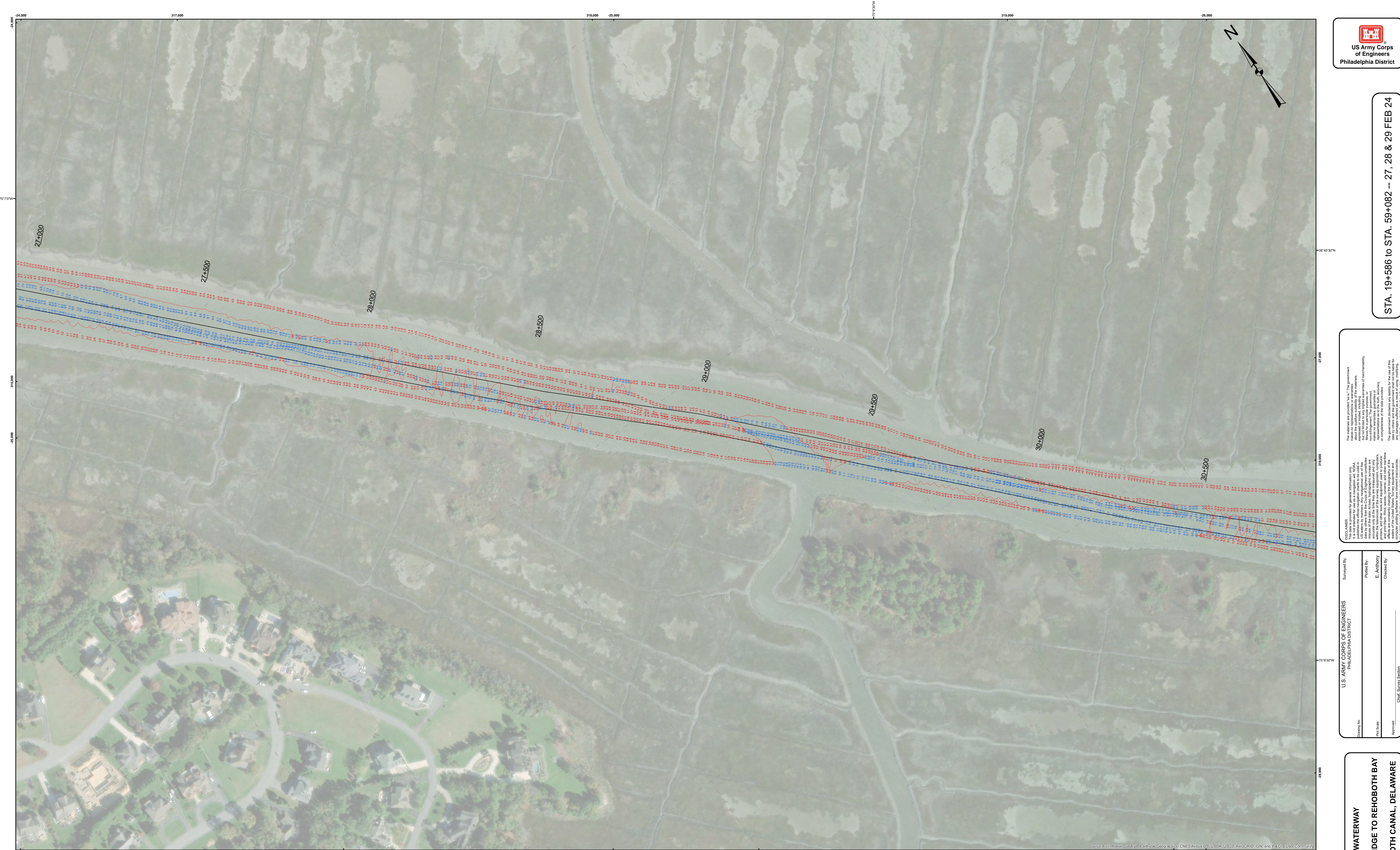
STA. 19+586 to STA. 59+082 -- 27, 28 & 29 FEB 24

The information provided is for informational purposes only. It is not intended to be used for navigation or other purposes. The government disclaims any liability for the use of this information. The government disclaims any liability for the use of this information. The government disclaims any liability for the use of this information.

Surveyed By: _____
Checked By: _____
E. Anthony

INLAND WATERWAY
SAVANNAH ROAD BRIDGE TO REHOBOTH BAY
LEWES AND REHOBOTH CANAL, DELAWARE

E-LR-07



HORIZONTAL REFERENCE - NAD 83, DELAWARE STATE PLANE, ZONE 0700, U.S. FOOT.

VERTICAL REFERENCE - MEAN LOWER LOW WATER, WHICH IS BELOW N.A.V.D. 88 BY THE FOLLOWING:

- 2.63' FROM 19+586 TO 26+500
- 2.40' FROM 26+500 TO 30+500
- 2.30' FROM 30+500 TO 34+000
- 2.20' FROM 34+000 TO 37+500
- 2.00' FROM 37+500 TO 40+500
- 1.80' FROM 40+500 TO 44+500
- 1.70' FROM 44+500 TO 47+500
- 1.50' FROM 47+500 TO 51+000
- 1.20' FROM 51+000 TO 54+500
- 1.00' FROM 54+500 TO 59+082

GEOID 12B AND NOAA TIDAL EPOCH: 1983 - 2001 WERE USED. SOUNDINGS ARE EXPRESSED IN FEET AND TENTHS AND REFER TO MEAN LOWER LOW WATER.

CONTOURS DEPICT ACTUAL LOCATION OF BATHYMETRY AND DO NOT NECESSARILY REFLECT PLOTTED SOUNDING LOCATIONS.

CONTOURS WERE GENERATED USING THE MINIMUM DEPTH WITHIN SEARCH RADIUS OF 8'.

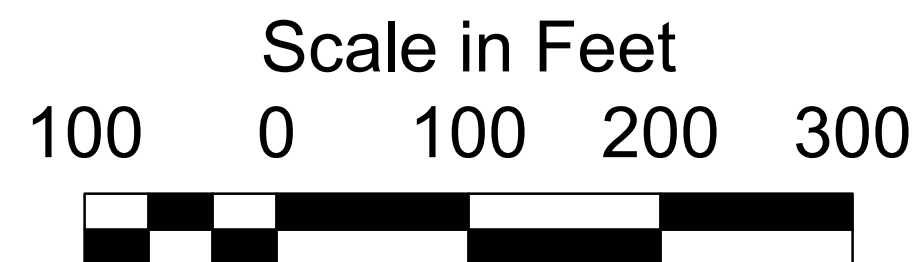
THE INFORMATION DEPICTED ON THIS MAP REPRESENT THE RESULTS OF SURVEYS MADE ON THE DATES INDICATED AND CAN ONLY BE CONSIDERED AS INDICATING THE GENERAL CONDITIONS EXISTING AT THAT TIME.

THE POSITIONS OF THE AIDS TO NAVIGATION ARE PROVIDED FOR INFORMATION ONLY, AND SHOULD NOT BE USED FOR NAVIGATION.

THE LIMITS OF THE FEDERAL CHANNEL DEPICT THE MOST CURRENT CHANNEL FRAMEWORK AVAILABLE WHICH CAN ALSO BE DOWNLOADED HERE:

<http://navigation.usace.army.mil/Survey/FrameWork>

BASE MAPPING LINEWORK OR ORTHOPHOTOGRAPHY HAS BEEN COMPILED FROM A VARIETY OF SOURCES AND DATES AND IS INTENDED TO PORTRAY GENERAL CHARACTERISTICS OF THE SHORELINE AND OTHER FEATURES. TEMPORAL CHANGES MAY HAVE OCCURRED SINCE THIS DATA SET WAS COLLECTED AND SOME PARTS OF THE DATA MAY NO LONGER BE AN ACCURATE REPRESENTATION OF THE SURFACE CONDITIONS.



- Shoalest Sounding
- 6' Curve of Depth
- CenterLine
- ToeLine
- StationLine



STA. 19+586 to STA. 59+082 -- 27, 28 & 29 FEB 24

The information provided is for informational purposes only. It is not intended to be used for navigation or other purposes. The government disclaims any liability for the use of this information. The government disclaims any liability for the use of this information. The government disclaims any liability for the use of this information.

U.S. ARMY CORPS OF ENGINEERS
PHILADELPHIA DISTRICT
Surveyed By: _____
Checked By: _____
E. Anthony

INLAND WATERWAY
SAVANNAH ROAD BRIDGE TO REHOBOTH BAY
LEWES AND REHOBOTH CANAL, DELAWARE

E-LR-07



STA. 19+586 to STA. 59+082 -- 27, 28 & 29 FEB 24

[illegible]

U.S. ARMY CORPS OF ENGINEERS

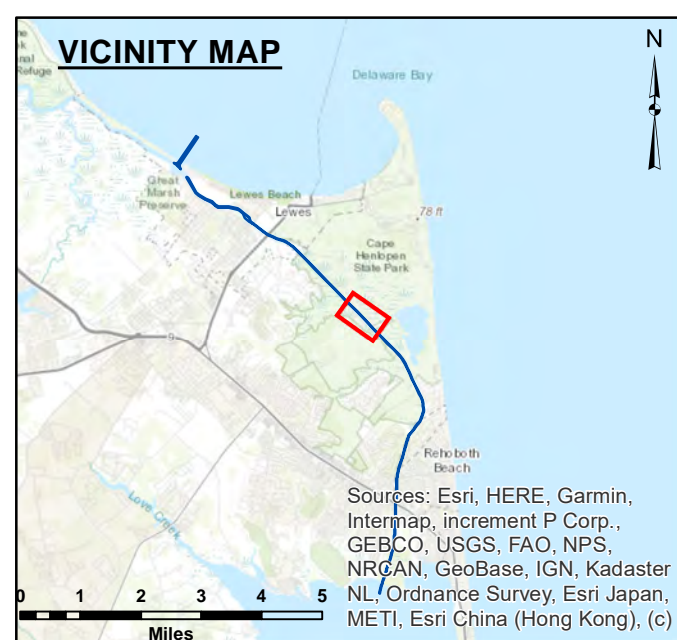
Plotted By:

Plot Scale

E. Anthony

INLAND WATERWAY
SAVANNAH ROAD BRIDGE TO REHOBOTH BAY
LEWES AND REHOBOTH CANAL, DELAWARE

E-LR-07



HORIZONTAL REFERENCE - NAD 83, DELAWARE STATE PLANE, ZONE 0700, U.S. FOOT.

VERTICAL REFERENCE – MEAN LOWER LOW WATER, WHICH IS BELOW N.A.V.D. 88 BY THE FOLLOWING:

2.63' FROM 19+586 TO 26+500
2.40' FROM 26+500 TO 30+500
2.30' FROM 30+500 TO 34+000
2.20' FROM 34+000 TO 37+500
2.00' FROM 37+500 TO 40+500
1.80' FROM 40+500 TO 44+500
1.70' FROM 44+500 TO 47+500
1.50' FROM 47+500 TO 51+000
1.20' FROM 51+000 TO 54+500
1.00' FROM 54+500 TO 59+082

GEOID 12B AND NOAA TIDAL EPOCH: 1983 – 2001 WERE USED. SOUNDINGS ARE EXPRESSED IN FEET AND TENTHS AND REFER TO MEAN LOWER LOW WATER.

CONTOURS DEPICT ACTUAL LOCATION OF BATHYMETRY AND
DO NOT NECESSARILY REFLECT PLOTTED SOUNDING LOCATIONS

CONTOURS WERE GENERATED USING THE MINIMUM DEPTH WITHIN SEARCH RADIUS OF 8"

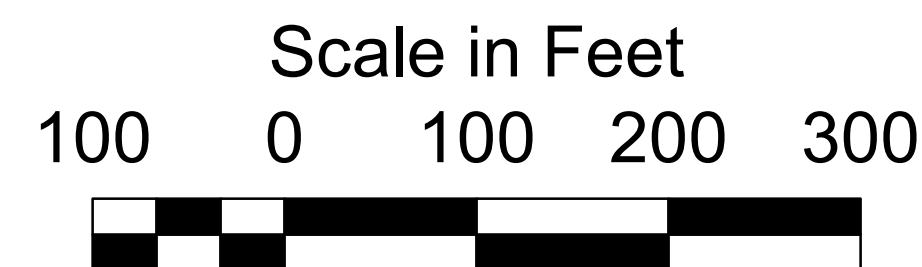
THE INFORMATION DEPICTED ON THIS MAP REPRESENT THE RESULTS OF
SURVEYS MADE ON THE DATES INDICATED
AND CAN ONLY BE CONSIDERED AS INDICATING THE GENERAL CONDITIONS
EXISTING AT THAT TIME.

THE POSITIONS OF THE AIDS TO NAVIGATION ARE PROVIDED FOR INFORMATION ONLY, AND SHOULD NOT BE USED FOR NAVIGATION.

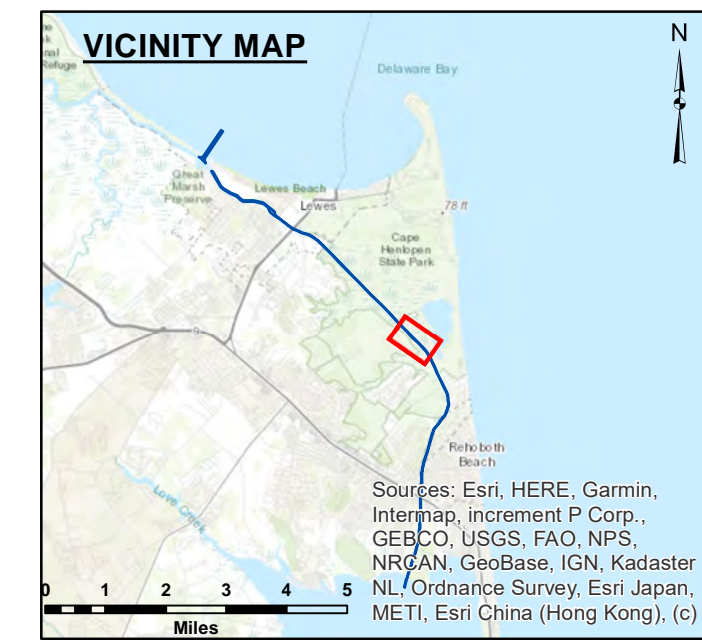
THE LIMITS OF THE FEDERAL CHANNEL
DEPICT THE MOST CURRENT CHANNEL
FRAMEWORK AVAILABLE WHICH CAN ALSO BE DOWNLOADED HERE:

<http://navigation.usace.army.mil/Survey/Framework>

BASE MAPPING LINEWORK OR ORTHOPHOTOGRAPHY HAS BEEN COMPILED FROM A VARIETY OF SOURCES AND DATES AND IS INTENDED TO PORTRAY GENERAL CHARACTERISTICS OF THE SHORELINE AND OTHER FEATURES. TEMPORAL CHANGES MAY HAVE OCCURRED SINCE THIS DATA SET WAS COLLECTED AND SOME PARTS OF THE DATA MAY NO LONGER BE AN ACCURATE REPRESENTATION OF THE SURFACE CONDITIONS.



- Shoalest Sounding
- 6' Curve of Depth
- - - CenterLine
- ToeLine
- StationLine



HORIZONTAL REFERENCE - NAD 83, DELAWARE STATE PLANE, ZONE 0700, U.S. FOOT.

VERTICAL REFERENCE - MEAN LOWER LOW WATER, WHICH IS BELOW N.A.V.D. 88 BY THE FOLLOWING:

- 2.63' FROM 19+586 TO 26+500
- 2.40' FROM 26+500 TO 30+500
- 2.30' FROM 30+500 TO 34+000
- 2.20' FROM 34+000 TO 37+500
- 2.00' FROM 37+500 TO 40+500
- 1.80' FROM 40+500 TO 44+500
- 1.70' FROM 44+500 TO 47+500
- 1.50' FROM 47+500 TO 51+000
- 1.20' FROM 51+000 TO 54+500
- 1.00' FROM 54+500 TO 59+082

GEOID 12B AND NOAA TIDAL EPOCH: 1983 - 2001 WERE USED. SOUNDINGS ARE EXPRESSED IN FEET AND TENTHS AND REFER TO MEAN LOWER LOW WATER.

CONTOURS DEPICT ACTUAL LOCATION OF BATHYMETRY AND DO NOT NECESSARILY REFLECT PLOTTED SOUNDING LOCATIONS.

CONTOURS WERE GENERATED USING THE MINIMUM DEPTH WITHIN SEARCH RADIUS OF 8'.

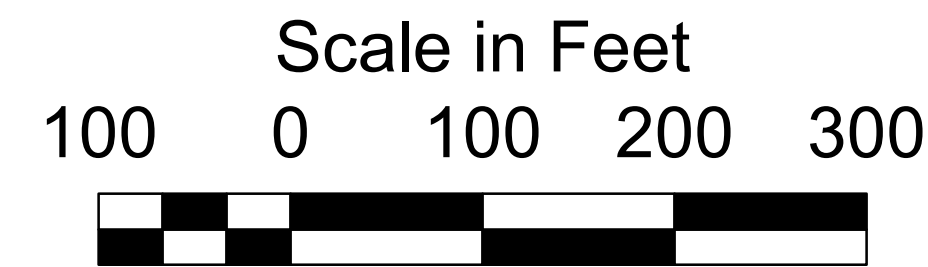
THE INFORMATION DEPICTED ON THIS MAP REPRESENT THE RESULTS OF SURVEYS MADE ON THE DATES INDICATED AND CAN ONLY BE CONSIDERED AS INDICATING THE GENERAL CONDITIONS EXISTING AT THAT TIME.

THE POSITIONS OF THE AIDS TO NAVIGATION ARE PROVIDED FOR INFORMATION ONLY, AND SHOULD NOT BE USED FOR NAVIGATION.

THE LIMITS OF THE FEDERAL CHANNEL DEPICT THE MOST CURRENT CHANNEL FRAMEWORK AVAILABLE WHICH CAN ALSO BE DOWNLOADED HERE:

<http://navigation.usace.army.mil/Survey/Framework>

BASE MAPPING LINEWORK OR ORTHOPHOTOGRAPHY HAS BEEN COMPILED FROM A VARIETY OF SOURCES AND DATES AND IS INTENDED TO PORTRAY GENERAL CHARACTERISTICS OF THE SHORELINE AND OTHER FEATURES. TEMPORAL CHANGES MAY HAVE OCCURRED SINCE THIS DATA SET WAS COLLECTED AND SOME PARTS OF THE DATA MAY NO LONGER BE AN ACCURATE REPRESENTATION OF THE SURFACE CONDITIONS.



- Shoalest Sounding
- 6' Curve of Depth
- CenterLine
- ToeLine
- StationLine



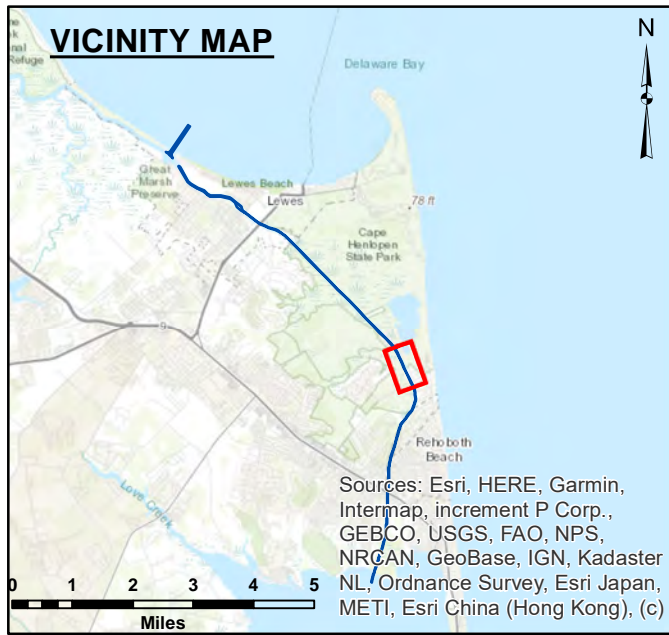
STA. 19+586 to STA. 59+082 -- 27, 28 & 29 FEB 24

The information provided is for informational purposes only. It is not intended to be used for navigation or other purposes. The information is provided as is, without warranty. The user assumes all responsibility for the use of the information. The information is not to be used for navigation or other purposes. The information is provided as is, without warranty. The user assumes all responsibility for the use of the information.

U.S. ARMY CORPS OF ENGINEERS
PHILADELPHIA DISTRICT
Surveyed By: _____
Checked By: E. Anthony
Approved: _____
Chief, Survey Section

INLAND WATERWAY
SAVANNAH ROAD BRIDGE TO REHOBOTH BAY
LEWES AND REHOBOTH CANAL, DELAWARE

E-LR-07



HORIZONTAL REFERENCE - NAD 83, DELAWARE STATE PLANE, ZONE 0700, U.S. FOOT.

VERTICAL REFERENCE - MEAN LOWER LOW WATER, WHICH IS BELOW N.A.V.D. 88 BY THE FOLLOWING:

- 2.63' FROM 19+586 TO 26+500
- 2.40' FROM 26+500 TO 30+500
- 2.30' FROM 30+500 TO 34+000
- 2.20' FROM 34+000 TO 37+500
- 2.00' FROM 37+500 TO 40+500
- 1.80' FROM 40+500 TO 44+500
- 1.70' FROM 44+500 TO 47+500
- 1.50' FROM 47+500 TO 51+000
- 1.20' FROM 51+000 TO 54+500
- 1.00' FROM 54+500 TO 59+082

GEOID 12B AND NOAA TIDAL EPOCH: 1983 - 2001 WERE USED. SOUNDINGS ARE EXPRESSED IN FEET AND TENTHS AND REFER TO MEAN LOWER LOW WATER.

CONTOURS DEPICT ACTUAL LOCATION OF BATHYMETRY AND DO NOT NECESSARILY REFLECT PLOTTED SOUNDING LOCATIONS.

CONTOURS WERE GENERATED USING THE MINIMUM DEPTH WITHIN SEARCH RADIUS OF 8'.

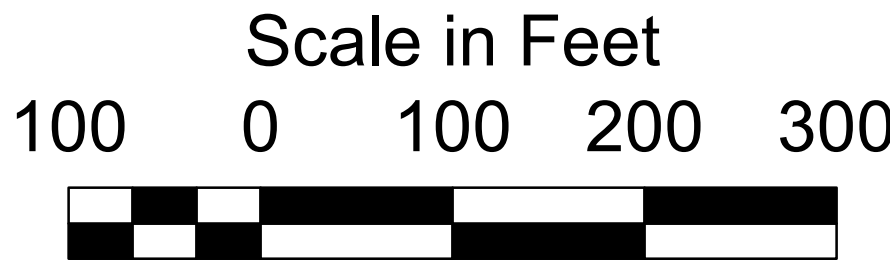
THE INFORMATION DEPICTED ON THIS MAP REPRESENT THE RESULTS OF SURVEYS MADE ON THE DATES INDICATED AND CAN ONLY BE CONSIDERED AS INDICATING THE GENERAL CONDITIONS EXISTING AT THAT TIME.

THE POSITIONS OF THE AIDS TO NAVIGATION ARE PROVIDED FOR INFORMATION ONLY, AND SHOULD NOT BE USED FOR NAVIGATION.

THE LIMITS OF THE FEDERAL CHANNEL DEPICT THE MOST CURRENT CHANNEL FRAMEWORK AVAILABLE WHICH CAN ALSO BE DOWNLOADED HERE:

<http://navigation.usace.army.mil/Survey/Framework>

BASE MAPPING LINEWORK OR ORTHOPHOTOGRAPHY HAS BEEN COMPILED FROM A VARIETY OF SOURCES AND DATES AND IS INTENDED TO PORTRAY GENERAL CHARACTERISTICS OF THE SHORELINE AND OTHER FEATURES. TEMPORAL CHANGES MAY HAVE OCCURRED SINCE THIS DATA SET WAS COLLECTED AND SOME PARTS OF THE DATA MAY NO LONGER BE AN ACCURATE REPRESENTATION OF THE SURFACE CONDITIONS.



- Shoalest Sounding
- 6' Curve of Depth
- CenterLine
- ToeLine
- StationLine



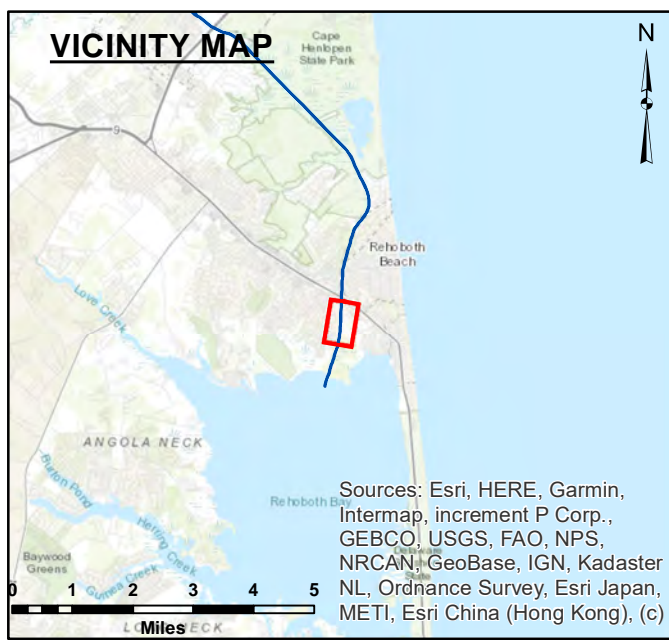
STA. 19+586 to STA. 59+082 -- 27, 28 & 29 FEB 24

The information is provided "as is". The government does not warrant the accuracy, completeness, or reliability of the information. The government is not responsible for any errors or omissions, or for any consequences arising from the use of the information. The government disclaims any liability for the use of this information.

Drawn By	Surveyed By
PHILADELPHIA DISTRICT	PHILADELPHIA DISTRICT
Point By	Checked By
E. Anthony	
Approved	Chief, Survey Section

INLAND WATERWAY
SAVANNAH ROAD BRIDGE TO REHOBOTH BAY
LEWES AND REHOBOTH CANAL, DELAWARE

E-LR-07



HORIZONTAL REFERENCE - NAD 83, DELAWARE STATE PLANE, ZONE 0700, U.S. FOOT.

VERTICAL REFERENCE - MEAN LOWER LOW WATER, WHICH IS BELOW N.A.V.D. 88 BY THE FOLLOWING:

- 2.63' FROM 19+586 TO 26+500
- 2.40' FROM 26+500 TO 30+500
- 2.30' FROM 30+500 TO 34+500
- 2.20' FROM 34+500 TO 37+500
- 2.00' FROM 37+500 TO 40+500
- 1.80' FROM 40+500 TO 44+500
- 1.70' FROM 44+500 TO 47+500
- 1.50' FROM 47+500 TO 51+000
- 1.20' FROM 51+000 TO 54+500
- 1.00' FROM 54+500 TO 59+082

GEOD 12B AND NOAA TIDAL EPOCH: 1983 - 2001 WERE USED. SOUNDINGS ARE EXPRESSED IN FEET AND TENTHS AND REFER TO MEAN LOWER LOW WATER.

CONTOURS DEPICT ACTUAL LOCATION OF BATHYMETRY AND DO NOT NECESSARILY REFLECT PLOTTED SOUNDING LOCATIONS.

CONTOURS WERE GENERATED USING THE MINIMUM DEPTH WITHIN SEARCH RADIUS OF 8'.

THE INFORMATION DEPICTED ON THIS MAP REPRESENT THE RESULTS OF SURVEYS MADE ON THE DATES INDICATED AND CAN ONLY BE CONSIDERED AS INDICATING THE GENERAL CONDITIONS EXISTING AT THAT TIME.

THE POSITIONS OF THE AIDS TO NAVIGATION ARE PROVIDED FOR INFORMATION ONLY, AND SHOULD NOT BE USED FOR NAVIGATION.

THE LIMITS OF THE FEDERAL CHANNEL DEPICT THE MOST CURRENT CHANNEL FRAMEWORK AVAILABLE WHICH CAN ALSO BE DOWNLOADED HERE:

<http://navigation.usace.army.mil/Survey/Framework>

BASE MAPPING LINEWORK OR ORTHOPHOTOGRAPHY HAS BEEN COMPILED FROM A VARIETY OF SOURCES AND DATES AND IS INTENDED TO PORTRAY GENERAL CHARACTERISTICS OF THE SHORELINE AND OTHER FEATURES. TEMPORAL CHANGES MAY HAVE OCCURRED SINCE THIS DATA SET WAS COLLECTED AND SOME PARTS OF THE DATA MAY NO LONGER BE AN ACCURATE REPRESENTATION OF THE SURFACE CONDITIONS.



- Shoalest Sounding
- 6' Curve of Depth
- CenterLine
- ToeLine
- StationLine



STA. 19+586 to STA. 59+082 -- 27, 28 & 29 FEB 24

The information provided is for informational purposes only. The government does not warrant the accuracy or completeness of the information. The government is not responsible for any errors or omissions. The government is not responsible for any damages or losses resulting from the use of this information. The government is not responsible for any claims or liabilities resulting from the use of this information. The government is not responsible for any claims or liabilities resulting from the use of this information.

Drawing No.	U.S. ARMY CORPS OF ENGINEERS PHILADELPHIA DISTRICT	Surveyed By:
Plot Scale		Point By: E. Anthony
Approved:	Chief, Survey Section	Checked By:

INLAND WATERWAY
SAVANNAH ROAD BRIDGE TO REHOBOTH BAY
LEWES AND REHOBOTH CANAL, DELAWARE

E-LR-07

