

HORIZONTAL REFERENCE - NAD 83, DELAWARE STATE PLANE, ZONE 0700, U.S. FOOT.

VERTICAL REFERENCE - MEAN LOWER LOW WATER, WHICH IS 1.49' BELOW N.A.V.D. 88.

GEOID 12B AND NOAA TIDAL EPOCH: 1983 - 2001 WERE USED. SOUNDINGS ARE EXPRESSED IN FEET AND TENTHS AND REFER TO MEAN LOWER LOW WATER.

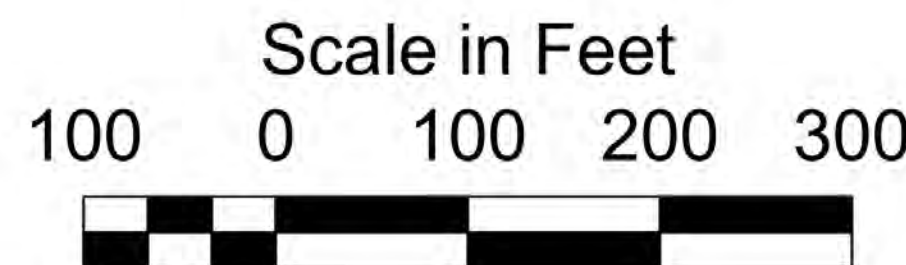
THE INFORMATION DEPICTED ON THIS MAP REPRESENT THE RESULTS OF SURVEYS MADE ON THE DATES INDICATED AND CAN ONLY BE CONSIDERED AS INDICATING THE GENERAL CONDITIONS EXISTING AT THAT TIME.

THE POSITIONS OF THE AIDS TO NAVIGATION ARE PROVIDED FOR INFORMATION ONLY, AND SHOULD NOT BE USED FOR NAVIGATION.

THE LIMITS OF THE FEDERAL CHANNEL
DEPICT THE MOST CURRENT CHANNEL
FRAMEWORK AVAILABLE WHICH CAN ALSO BE DOWNLOADED HERE:

<http://navigation.usace.army.mil/Survey/Framework>

BASE MAPPING LINEWORK OR ORTHOPHOTOGRAPHY HAS BEEN COMPILED FROM A VARIETY OF SOURCES AND DATES AND IS INTENDED TO PORTRAY GENERAL CHARACTERISTICS OF THE SHORELINE AND OTHER FEATURES. TEMPORAL CHANGES MAY HAVE OCCURRED SINCE THIS DATA SET WAS COLLECTED AND SOME PARTS OF THE DATA MAY NO LONGER BE AN ACCURATE REPRESENTATION OF THE SURFACE CONDITIONS.



- 6' Curve of Depth
- CenterLine
- ToeLine
- CenterLine
- StationLine

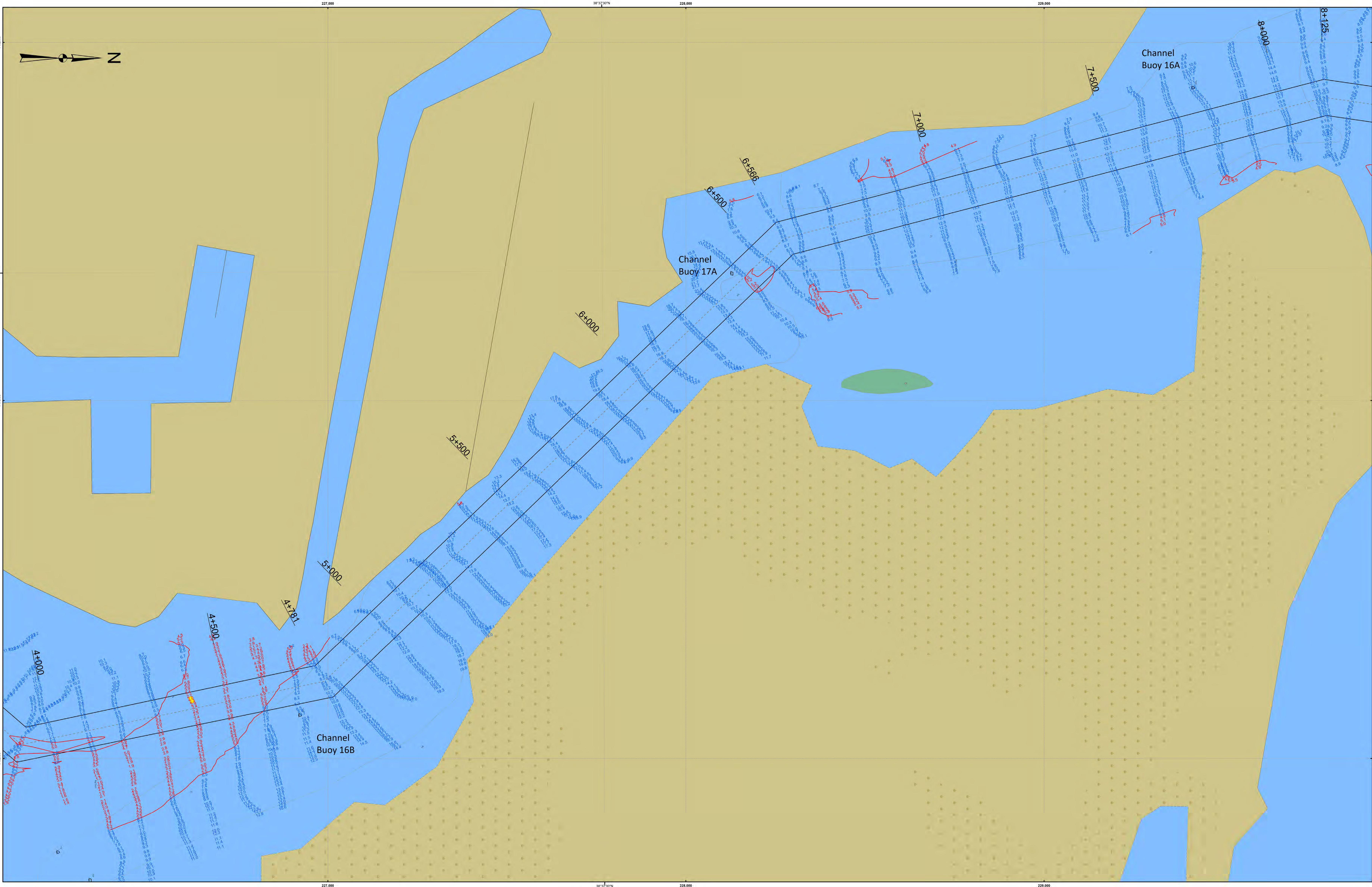


DISCLAIMER: This map was prepared by the U.S. Army Corps of Engineers, Philadelphia District, for the purpose of providing information to the public. It is not intended for use as a navigational aid. The map is based on data provided by the U.S. Army Corps of Engineers, Philadelphia District, and is not intended to be used for navigation. The map is not a substitute for a survey or other official document. The map is not a substitute for a survey or other official document. The map is not a substitute for a survey or other official document.

| | | |
|---|--------------|-----------------------|
| Surveyed By: | Produced By: | Checked By: |
| U.S. ARMY CORPS OF ENGINEERS PHILADELPHIA DISTRICT | E. Anthony | |
| Drawing No: | Per Scale: | Approval: |
| | | Chief, Survey Section |

MASSEY'S DITCH
DELAWARE
15 APR 24

E-MD-02



HORIZONTAL REFERENCE - NAD 83, DELAWARE STATE PLANE, ZONE 0700, U.S. FOOT.

VERTICAL REFERENCE - MEAN LOWER LOW WATER, WHICH IS 1.49' BELOW N.A.V.D. 88.

GEOD 12B AND NOAA TIDAL EPOCH: 1983 - 2001 WERE USED. SOUNDINGS ARE EXPRESSED IN FEET AND TENTHS AND REFER TO MEAN LOWER LOW WATER.

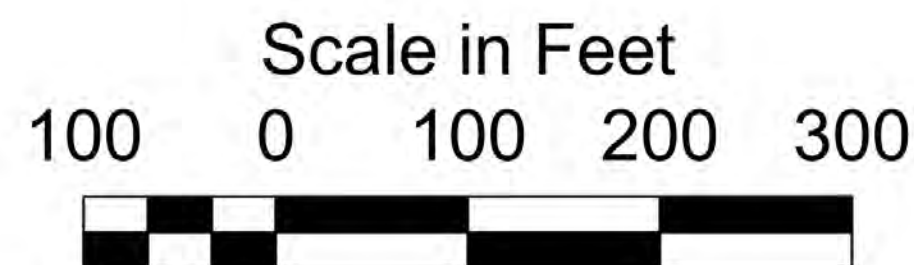
THE INFORMATION DEPICTED ON THIS MAP REPRESENT THE RESULTS OF SURVEYS MADE ON THE DATES INDICATED AND CAN ONLY BE CONSIDERED AS INDICATING THE GENERAL CONDITIONS EXISTING AT THAT TIME.

THE POSITIONS OF THE AIDS TO NAVIGATION ARE PROVIDED FOR INFORMATION ONLY, AND SHOULD NOT BE USED FOR NAVIGATION.

THE LIMITS OF THE FEDERAL CHANNEL DEPICT THE MOST CURRENT CHANNEL FRAMEWORK AVAILABLE WHICH CAN ALSO BE DOWNLOADED HERE:

<http://navigation.usace.army.mil/Survey/Framework>

BASE MAPPING LINEWORK OR ORTHOPHOTOGRAPHY HAS BEEN COMPILED FROM A VARIETY OF SOURCES AND DATES AND IS INTENDED TO PORTRAY GENERAL CHARACTERISTICS OF THE SHORELINE AND OTHER FEATURES. TEMPORAL CHANGES MAY HAVE OCCURRED SINCE THIS DATA SET WAS COLLECTED AND SOME PARTS OF THE DATA MAY NO LONGER BE AN ACCURATE REPRESENTATION OF THE SURFACE CONDITIONS.



- 6' Curve of Depth
- CenterLine
- ToeLine
- CenterLine
- StationLine

