

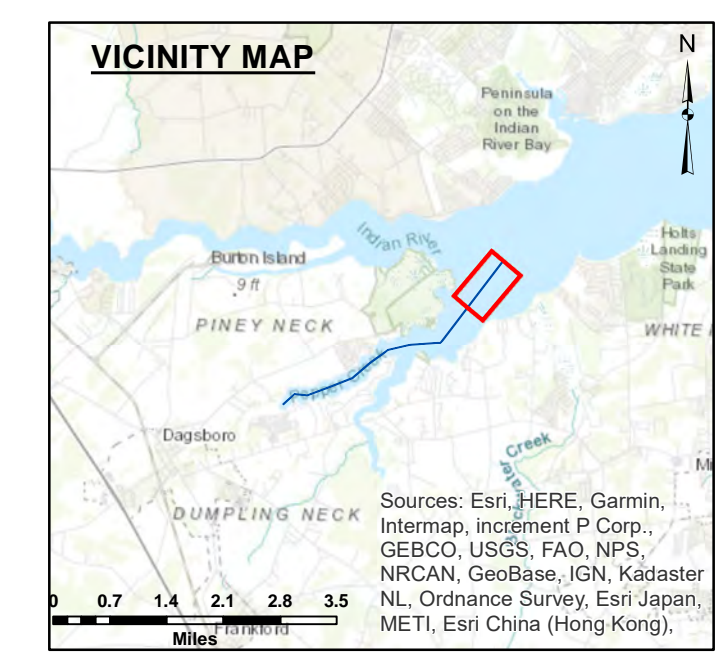
The information provided is for general information only. It is not intended to be used for navigation. The government disclaims any liability for the use of the information. The government disclaims any liability for the use of the information. The government disclaims any liability for the use of the information.

U.S. ARMY CORPS OF ENGINEERS
PHILADELPHIA DISTRICT

Surveyed By: _____
 Drawn By: _____
 Published By: E. Anthony
 Plan Scale: _____
 Checked By: _____
 Approved: _____
 Chief, Survey Section

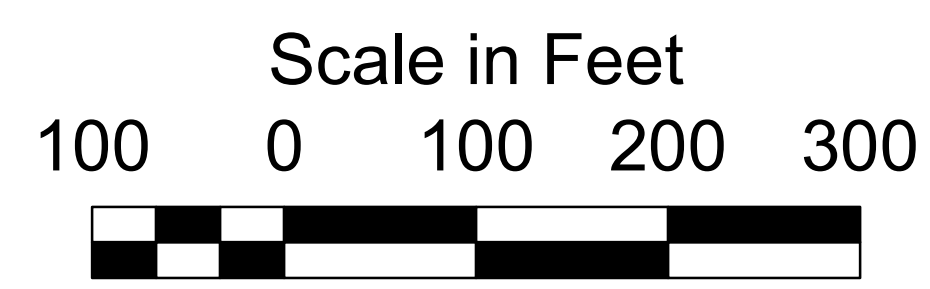
PEPPER CREEK
DELAWARE
16 MAY 24

E-PC-02

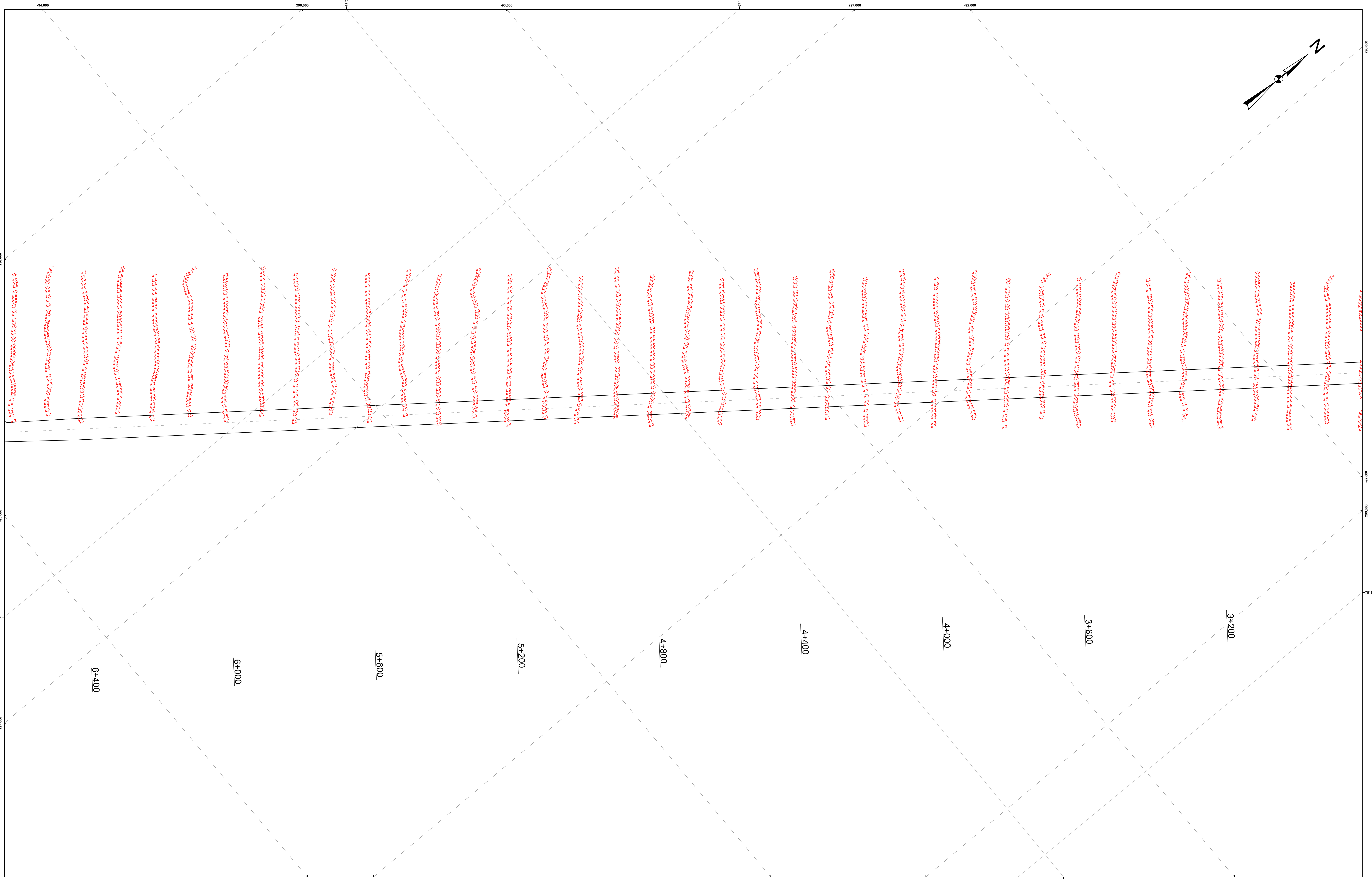


HORIZONTAL REFERENCE - NAD 83, DELAWARE STATE PLANE, ZONE 0700, U.S. FOOT.
 VERTICAL REFERENCE - MEAN LOWER LOW WATER, WHICH IS 1.49' BELOW N.A.V.D. 88.
 GEOID 12B AND NOAA TIDAL EPOCH: 1983 - 2001 WERE USED. SOUNDINGS ARE EXPRESSED IN FEET AND TENTHS AND REFER TO MEAN LOWER LOW WATER.
 THE INFORMATION DEPICTED ON THIS MAP REPRESENT THE RESULTS OF SURVEYS MADE ON THE DATES INDICATED AND CAN ONLY BE CONSIDERED AS INDICATING THE GENERAL CONDITIONS EXISTING AT THAT TIME.

THE POSITIONS OF THE AIDS TO NAVIGATION ARE PROVIDED FOR INFORMATION ONLY, AND SHOULD NOT BE USED FOR NAVIGATION.
 THE LIMITS OF THE FEDERAL CHANNEL DEPICT THE MOST CURRENT CHANNEL FRAMEWORK AVAILABLE WHICH CAN ALSO BE DOWNLOADED HERE:
<http://navigation.usace.army.mil/Survey/Framework>
 BASE MAPPING LINEWORK OR ORTHOPHOTOGRAPHY HAS BEEN COMPILED FROM A VARIETY OF SOURCES AND DATES AND IS INTENDED TO PORTRAY GENERAL CHARACTERISTICS OF THE SHORELINE AND OTHER FEATURES. TEMPORAL CHANGES MAY HAVE OCCURRED SINCE THIS DATA SET WAS COLLECTED AND SOME PARTS OF THE DATA MAY NO LONGER BE AN ACCURATE REPRESENTATION OF THE SURFACE CONDITIONS.



- 6' Curve of Depth
- ToeLine
- - - CenterLine
- StationLine

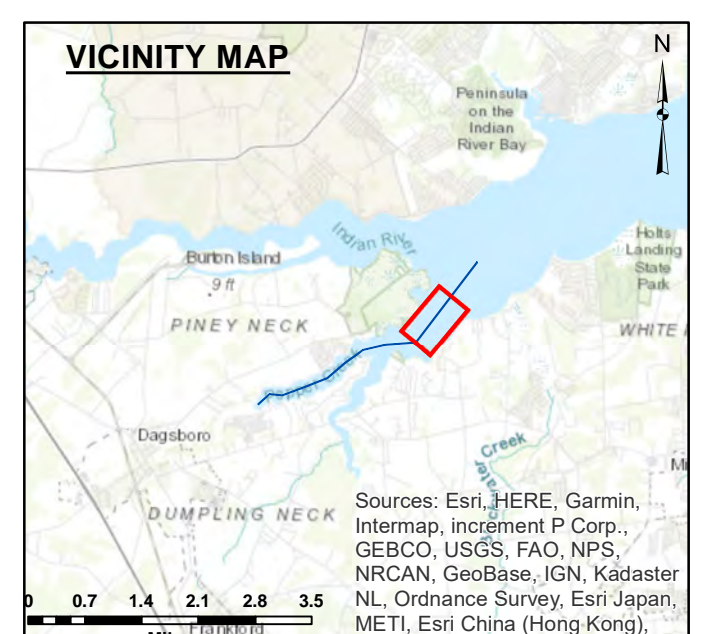


The information provided is for general information only. It is not intended to be used for navigation. The information is provided as a service to the public and is not a guarantee of accuracy. The information is provided as a service to the public and is not a guarantee of accuracy. The information is provided as a service to the public and is not a guarantee of accuracy.

Surveyed By:	U.S. ARMY CORPS OF ENGINEERS PHILADELPHIA DISTRICT
Published By:	E. Anthony
Checked By:	
Approval:	Chief, Survey Section

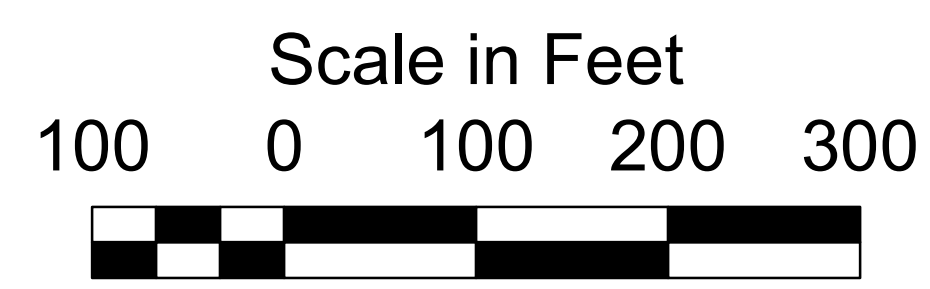
PEPPER CREEK
DELAWARE
16 MAY 24

E-PC-02

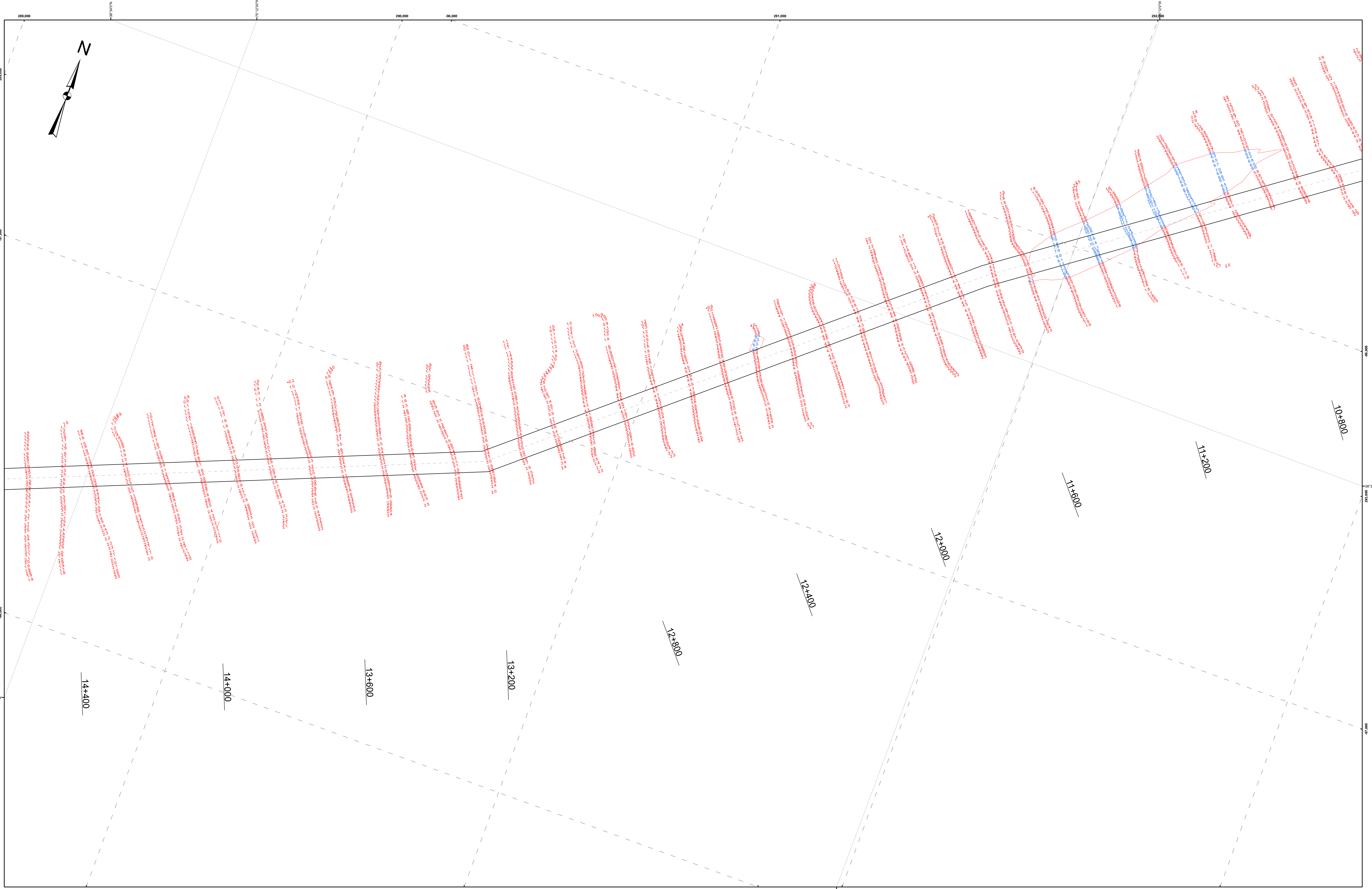


HORIZONTAL REFERENCE - NAD 83, DELAWARE STATE PLANE, ZONE 0700, U.S. FOOT.
VERTICAL REFERENCE - MEAN LOWER LOW WATER, WHICH IS 1.49' BELOW N.A.V.D. 88.
GEOID 12B AND NOAA TIDAL EPOCH: 1983 - 2001 WERE USED. SOUNDINGS ARE EXPRESSED IN FEET AND TENTHS AND REFER TO MEAN LOWER LOW WATER.
THE INFORMATION DEPICTED ON THIS MAP REPRESENT THE RESULTS OF SURVEYS MADE ON THE DATES INDICATED AND CAN ONLY BE CONSIDERED AS INDICATING THE GENERAL CONDITIONS EXISTING AT THAT TIME.

THE POSITIONS OF THE AIDS TO NAVIGATION ARE PROVIDED FOR INFORMATION ONLY, AND SHOULD NOT BE USED FOR NAVIGATION.
THE LIMITS OF THE FEDERAL CHANNEL DEPICT THE MOST CURRENT CHANNEL FRAMEWORK AVAILABLE WHICH CAN ALSO BE DOWNLOADED HERE:
<http://navigation.usace.army.mil/Survey/Framework>
BASE MAPPING LINEWORK OR ORTHOPHOTOGRAPHY HAS BEEN COMPILED FROM A VARIETY OF SOURCES AND DATES AND IS INTENDED TO PORTRAY GENERAL CHARACTERISTICS OF THE SHORELINE AND OTHER FEATURES. TEMPORAL CHANGES MAY HAVE OCCURRED SINCE THIS DATA SET WAS COLLECTED AND SOME PARTS OF THE DATA MAY NO LONGER BE AN ACCURATE REPRESENTATION OF THE SURFACE CONDITIONS.



- 6' Curve of Depth
- ToeLine
- - - CenterLine
- StationLine

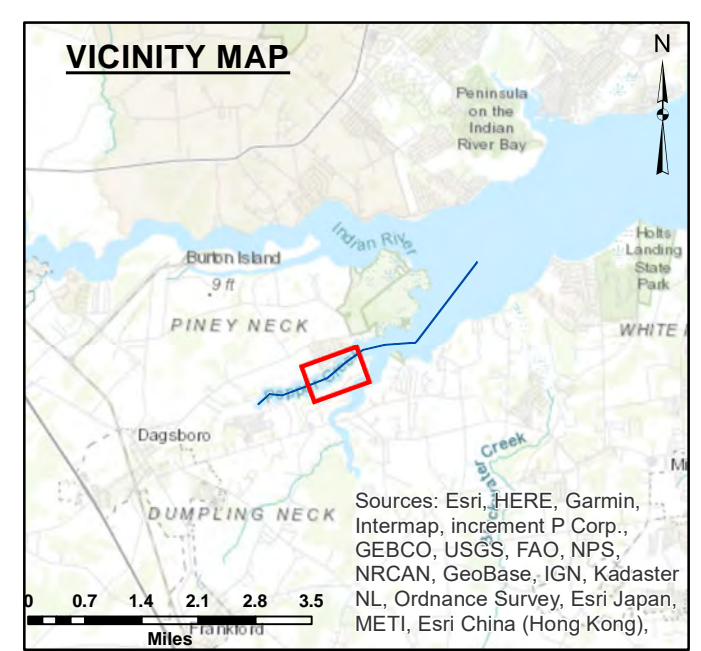


The information provided is for general information only. It is not intended for use in navigation. The government disclaims any liability for the use of this information. The government disclaims any liability for the use of this information. The government disclaims any liability for the use of this information.

U.S. ARMY CORPS OF ENGINEERS PHILADELPHIA DISTRICT
 Surveyed By: _____
 Plotted By: E. Anthony
 Checked By: _____
 Approved: _____
 Chief, Survey Section

PEPPER CREEK DELAWARE 16 MAY 24

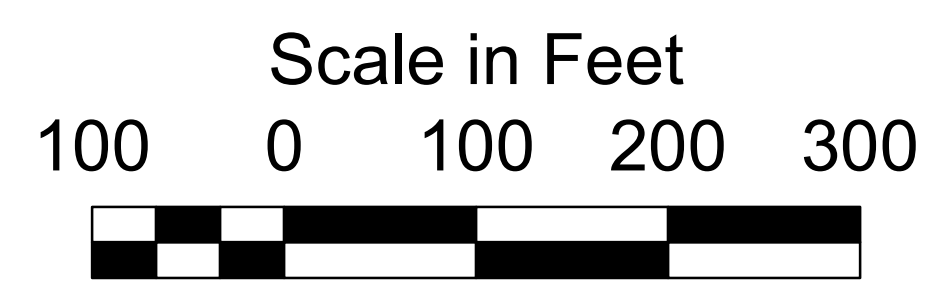
E-PC-02



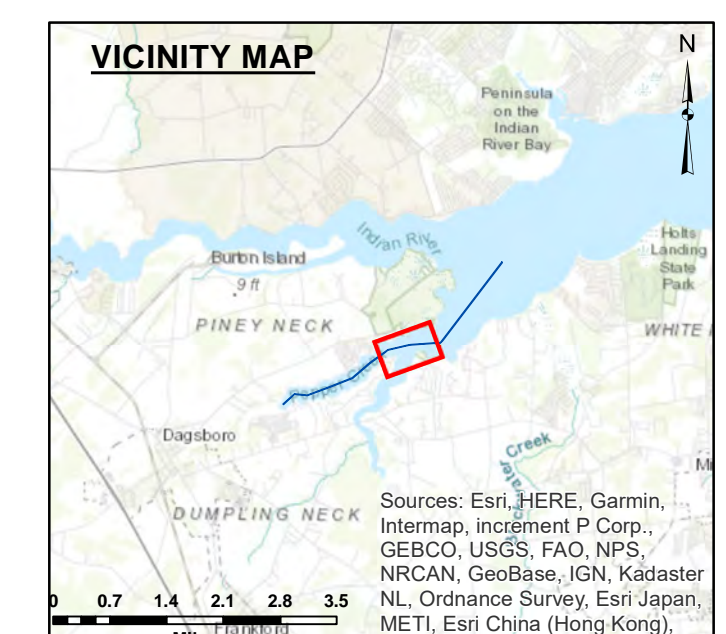
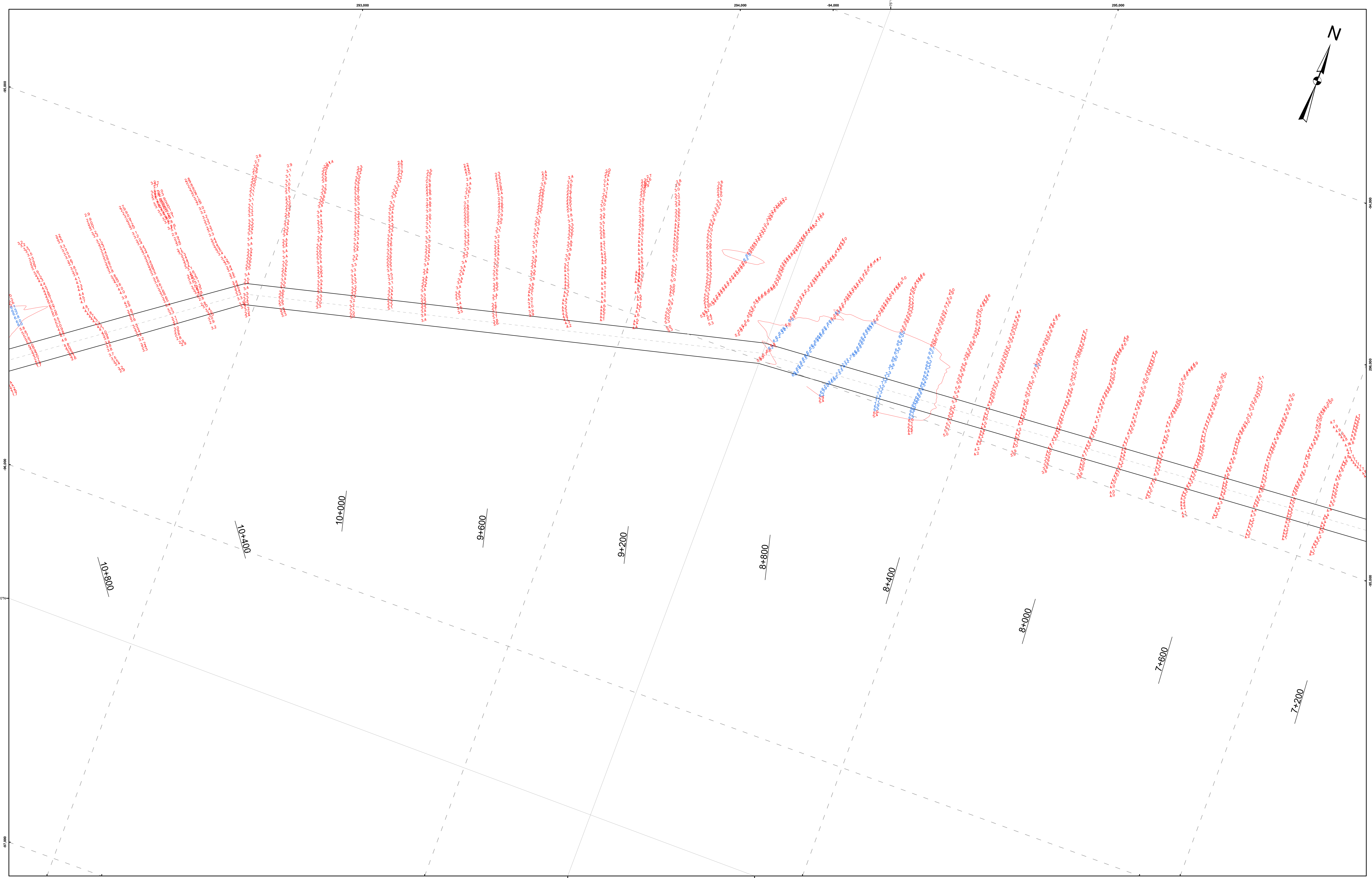
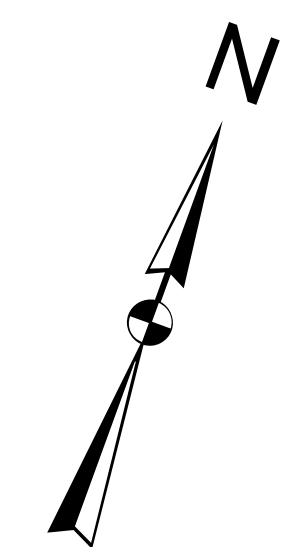
HORIZONTAL REFERENCE - NAD 83, DELAWARE STATE PLANE, ZONE 0700, U.S. FOOT.
 VERTICAL REFERENCE - MEAN LOWER LOW WATER, WHICH IS 1.49' BELOW N.A.V.D. 88.
 GEOID 12B AND NOAA TIDAL EPOCH: 1983 - 2001 WERE USED. SOUNDINGS ARE EXPRESSED IN FEET AND TENTHS AND REFER TO MEAN LOWER LOW WATER.
 THE INFORMATION DEPICTED ON THIS MAP REPRESENT THE RESULTS OF SURVEYS MADE ON THE DATES INDICATED AND CAN ONLY BE CONSIDERED AS INDICATING THE GENERAL CONDITIONS EXISTING AT THAT TIME.

THE POSITIONS OF THE AIDS TO NAVIGATION ARE PROVIDED FOR INFORMATION ONLY, AND SHOULD NOT BE USED FOR NAVIGATION.
 THE LIMITS OF THE FEDERAL CHANNEL DEPICT THE MOST CURRENT FRAMEWORK AVAILABLE WHICH CAN ALSO BE DOWNLOADED HERE:
<http://navigation.usace.army.mil/Survey/Framework>

BASE MAPPING LINEWORK OR ORTHOPHOTOGRAPHY HAS BEEN COMPILED FROM A VARIETY OF SOURCES AND DATES AND IS INTENDED TO PORTRAY GENERAL CHARACTERISTICS OF THE SHORELINE AND OTHER FEATURES. TEMPORAL CHANGES MAY HAVE OCCURRED SINCE THIS DATA SET WAS COLLECTED AND SOME PARTS OF THE DATA MAY NO LONGER BE AN ACCURATE REPRESENTATION OF THE SURFACE CONDITIONS.



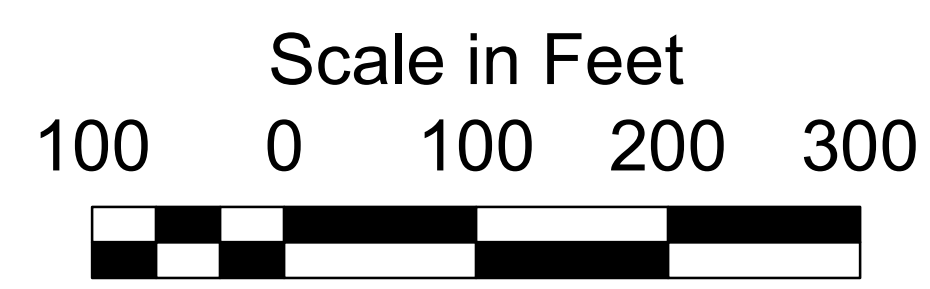
- 6' Curve of Depth
- ToeLine
- - - CenterLine
- StationLine



HORIZONTAL REFERENCE - NAD 83, DELAWARE STATE PLANE, ZONE 0700, U.S. FOOT.
 VERTICAL REFERENCE - MEAN LOWER LOW WATER, WHICH IS 1.49' BELOW N.A.V.D. 88.
 GEOID 12B AND NOAA TIDAL EPOCH: 1983 - 2001 WERE USED. SOUNDINGS ARE EXPRESSED IN FEET AND TENTHS AND REFER TO MEAN LOWER LOW WATER.
 THE INFORMATION DEPICTED ON THIS MAP REPRESENT THE RESULTS OF SURVEYS MADE ON THE DATES INDICATED AND CAN ONLY BE CONSIDERED AS INDICATING THE GENERAL CONDITIONS EXISTING AT THAT TIME.

THE POSITIONS OF THE AIDS TO NAVIGATION ARE PROVIDED FOR INFORMATION ONLY, AND SHOULD NOT BE USED FOR NAVIGATION.
 THE LIMITS OF THE FEDERAL CHANNEL DEPICT THE MOST CURRENT CHANNEL FRAMEWORK AVAILABLE WHICH CAN ALSO BE DOWNLOADED HERE:
<http://navigation.usace.army.mil/Survey/Framework>

BASE MAPPING LINEWORK OR ORTHOPHOTOGRAPHY HAS BEEN COMPILED FROM A VARIETY OF SOURCES AND DATES AND IS INTENDED TO PORTRAY GENERAL CHARACTERISTICS OF THE SHORELINE AND OTHER FEATURES. TEMPORAL CHANGES MAY HAVE OCCURRED SINCE THIS DATA SET WAS COLLECTED AND SOME PARTS OF THE DATA MAY NO LONGER BE AN ACCURATE REPRESENTATION OF THE SURFACE CONDITIONS.



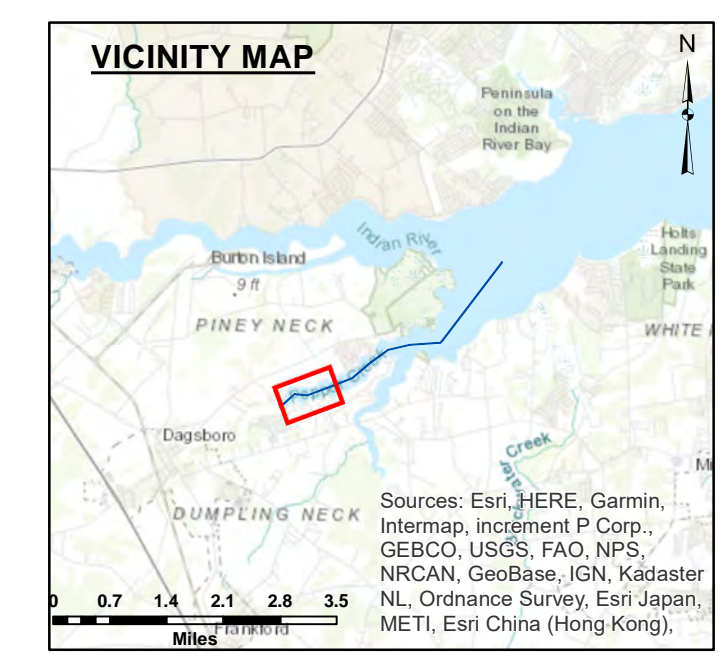
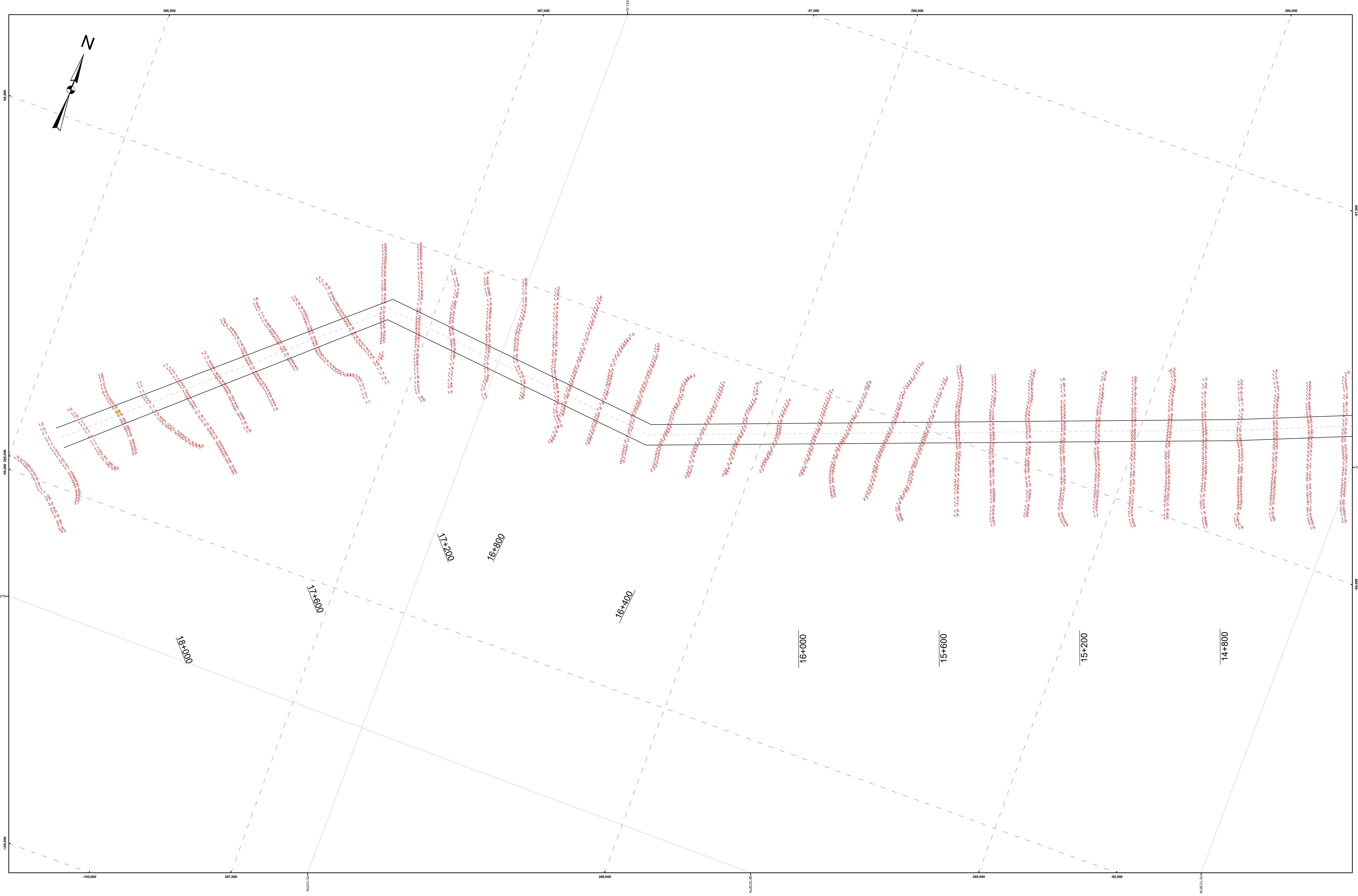
- 6' Curve of Depth
- ToeLine
- - - CenterLine
- StationLine

The information provided is for general information only. It is not intended to be used for navigation. The government disclaims any liability for the use of the information for any purpose other than that for which it was provided. The government disclaims any liability for the use of the information for any purpose other than that for which it was provided.

Surveyed By:	U.S. ARMY CORPS OF ENGINEERS PHILADELPHIA DISTRICT
Published By:	E. Anthony
Checked By:	
Approval:	Chief, Survey Section

PEPPER CREEK
DELAWARE
16 MAY 24

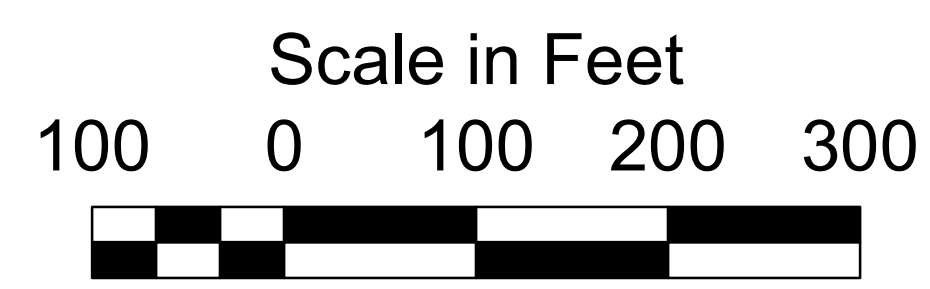
E-PC-02



HORIZONTAL REFERENCE - NAD 83, DELAWARE STATE PLANE, ZONE 0700, U.S. FOOT.
 VERTICAL REFERENCE - MEAN LOWER LOW WATER, WHICH IS 1.49' BELOW N.A.V.D. 88.
 GEOID 12B AND NOAA TIDAL EPOCH: 1983 - 2001 WERE USED. SOUNDINGS ARE EXPRESSED IN FEET AND TENTHS AND REFER TO MEAN LOWER LOW WATER.
 THE INFORMATION DEPICTED ON THIS MAP REPRESENT THE RESULTS OF SURVEYS MADE ON THE DATES INDICATED AND CAN ONLY BE CONSIDERED AS INDICATING THE GENERAL CONDITIONS EXISTING AT THAT TIME.

THE POSITIONS OF THE AIDS TO NAVIGATION ARE PROVIDED FOR INFORMATION ONLY, AND SHOULD NOT BE USED FOR NAVIGATION.
 THE LIMITS OF THE FEDERAL CHANNEL DEPICT THE MOST CURRENT CHANNEL FRAMEWORK AVAILABLE WHICH CAN ALSO BE DOWNLOADED HERE:
<http://navigation.usace.army.mil/Survey/Framework>

BASE MAPPING LINEWORK OR ORTHOPHOTOGRAPHY HAS BEEN COMPILED FROM A VARIETY OF SOURCES AND DATES AND IS INTENDED TO PORTRAY GENERAL CHARACTERISTICS OF THE SHORELINE AND OTHER FEATURES. TEMPORAL CHANGES MAY HAVE OCCURRED SINCE THIS DATA SET WAS COLLECTED AND SOME PARTS OF THE DATA MAY NO LONGER BE AN ACCURATE REPRESENTATION OF THE SURFACE CONDITIONS.



- 6' Curve of Depth
- ToeLine
- - - CenterLine
- StationLine

The information provided is for general information only. It is not intended to be used for navigation. The government disclaims any liability for the use of this information. The government disclaims any liability for the use of this information, including any damages, direct or indirect, arising from the use of this information.

Surveyed By:	
Published By:	E. Anthony
Checked By:	
Approved:	Chief, Survey Section

PEPPER CREEK
 DELAWARE
 16 MAY 24

E-PC-02