

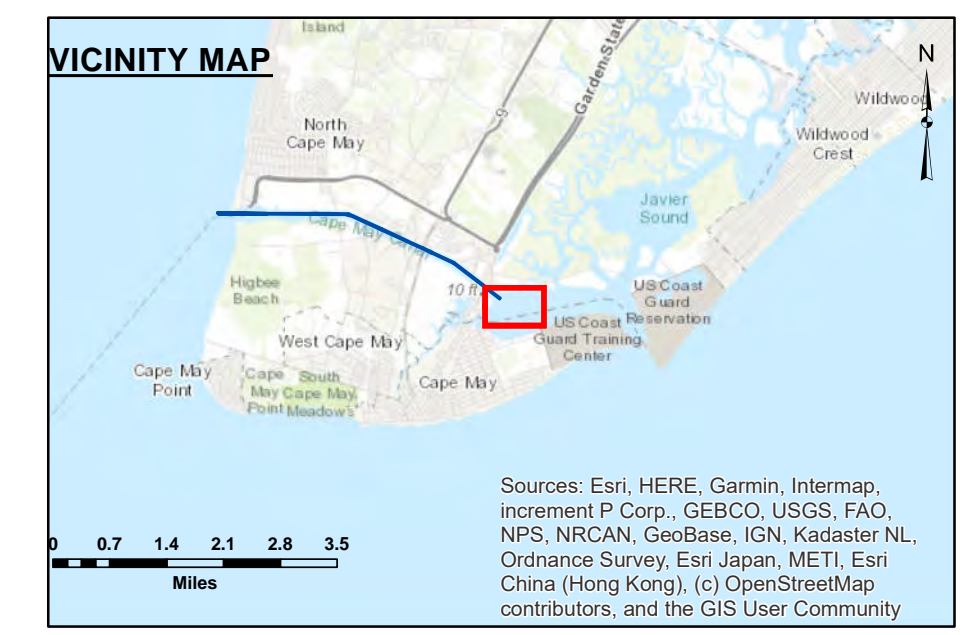
STA. -15+00 TO STA. 20+00 -- 30 JAN 24
 STA. 20+00 TO STA. 120+00 -- 29 JAN 24
 STA. 120+00 TO STA. 202+00 -- 31 JAN 24

DISCLAIMER
 This data is provided for general information only. It is not intended for use in navigation. The Corps of Engineers is not responsible for any errors or omissions in this data. Users should verify the accuracy of this data before using it for any purpose. The Corps of Engineers is not responsible for any damage or loss resulting from the use of this data. The Corps of Engineers is not responsible for any changes in the data over time. The Corps of Engineers is not responsible for any changes in the data over time.

U.S. ARMY CORPS OF ENGINEERS
 PHILADELPHIA DISTRICT

Surveyed By: _____
 Created By: _____
 Plotted By: E. Anthony
 Checked By: _____
 Approved: _____
 Chief, Survey Section

Cape May Canal
 STA. -15+00 TO STA. 186+00
 EXAMINATION

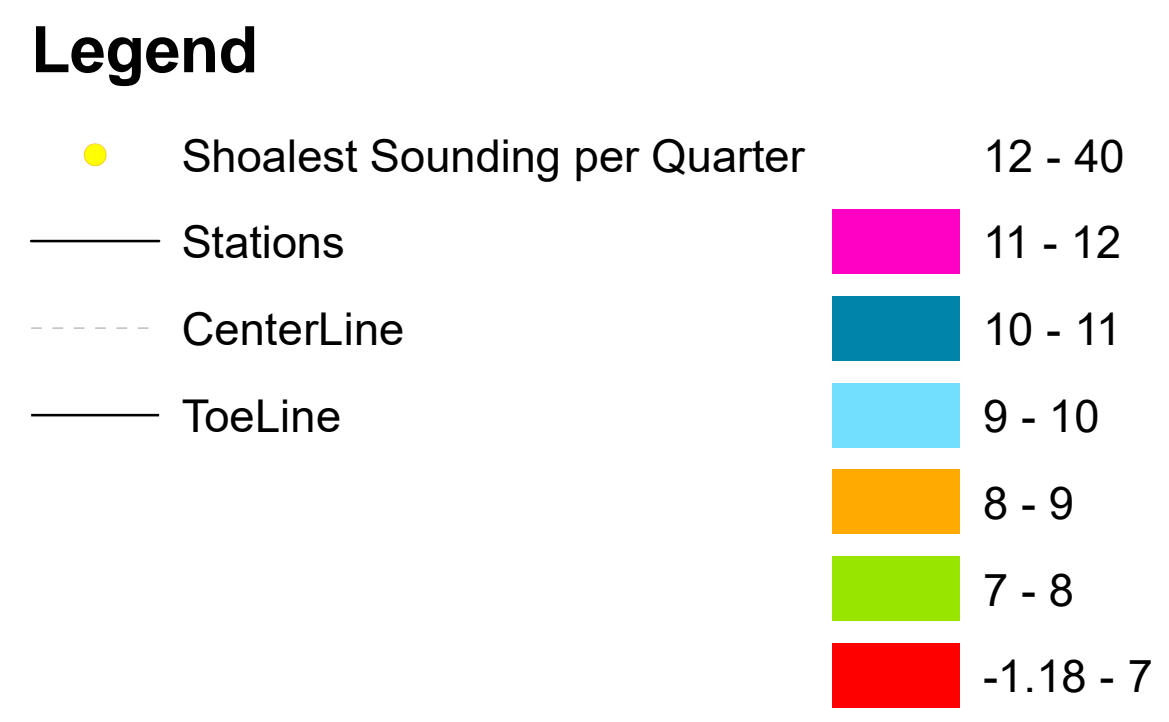
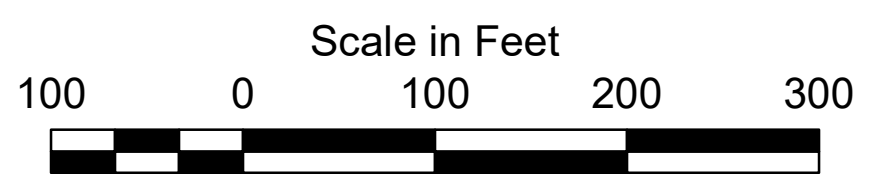


1. THIS SURVEY MEETS STANDARDS AS OUTLINED IN CORPS OF ENGINEERS' HYDROGRAPHIC SURVEY MANUAL EM1110-2-1003, DATED NOVEMBER 30, 2013 FOR NAVIGATION AND DREDGING SUPPORT SURVEYS.
2. HORIZONTAL REFERENCE - NAD 83, NEW JERSEY STATE PLANE, ZONE 2900, U.S. FOOT.
3. VERTICAL REFERENCE - MEAN LOWER LOW WATER, WHICH IS 3.02' BELOW N.A.V.D. 88.
4. NOAA TIDAL EPOCH: 1983 - 2001 WAS USED. SOUNDINGS ARE EXPRESSED IN FEET AND TENTHS AND REFER TO MEAN LOWER LOW WATER.

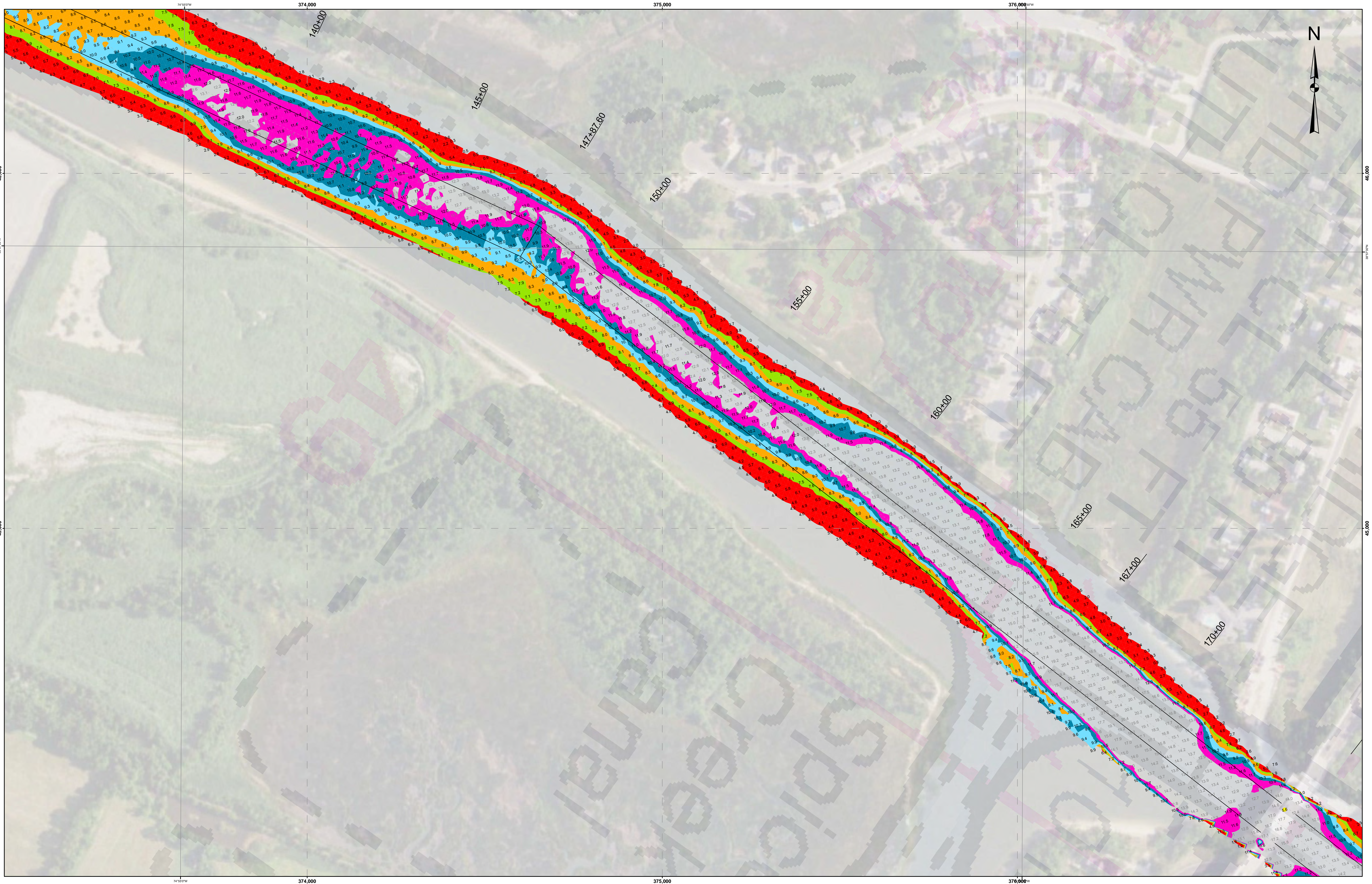
5. HYPACK, INC. SOFTWARE WAS USED TO PERFORM THE SOUNDING SELECTION AND CONTOUR GENERATION.
6. THE INFORMATION DEPICTED ON THIS MAP REPRESENT THE RESULTS OF SURVEYS MADE ON THE DATES INDICATED AND CAN ONLY BE CONSIDERED AS INDICATING THE GENERAL CONDITIONS EXISTING AT THAT TIME.

7. THE POSITIONS OF THE AIDS TO NAVIGATION ARE PROVIDED FOR INFORMATION ONLY, AND SHOULD NOT BE USED FOR NAVIGATION.
8. THE LIMITS OF THE FEDERAL CHANNEL DEPICT THE MOST CURRENT CHANNEL FRAMEWORK AVAILABLE WHICH CAN ALSO BE DOWNLOADED HERE:
<http://navigation.usace.army.mil/Survey/Framework>

9. BASE MAPPING LINEWORK OR ORTHOPHOTOGRAPHY HAS BEEN COMPILED FROM A VARIETY OF SOURCES AND DATES AND IS INTENDED TO PORTRAY GENERAL CHARACTERISTICS OF THE SHORELINE AND OTHER FEATURES. TEMPORAL CHANGES MAY HAVE OCCURRED SINCE THIS DATA SET WAS COLLECTED AND SOME PARTS OF THE DATA MAY NO LONGER BE AN ACCURATE REPRESENTATION OF THE SURFACE CONDITIONS.



E-CM-15



STA. -15+00 to STA. 20+00 -- 30 JAN 24
 STA. 20+00 to STA. 120+00 -- 29 JAN 24
 STA. 120+00 to STA. 202+00 -- 31 JAN 24

The materials and products on this page are provided for informational purposes only. They are not intended to be used for navigation or other purposes. The user assumes all responsibility for the accuracy and completeness of the data provided. The user agrees to hold the U.S. Army Corps of Engineers and its personnel harmless for any damages, claims, or liabilities resulting from the use of these materials and products.

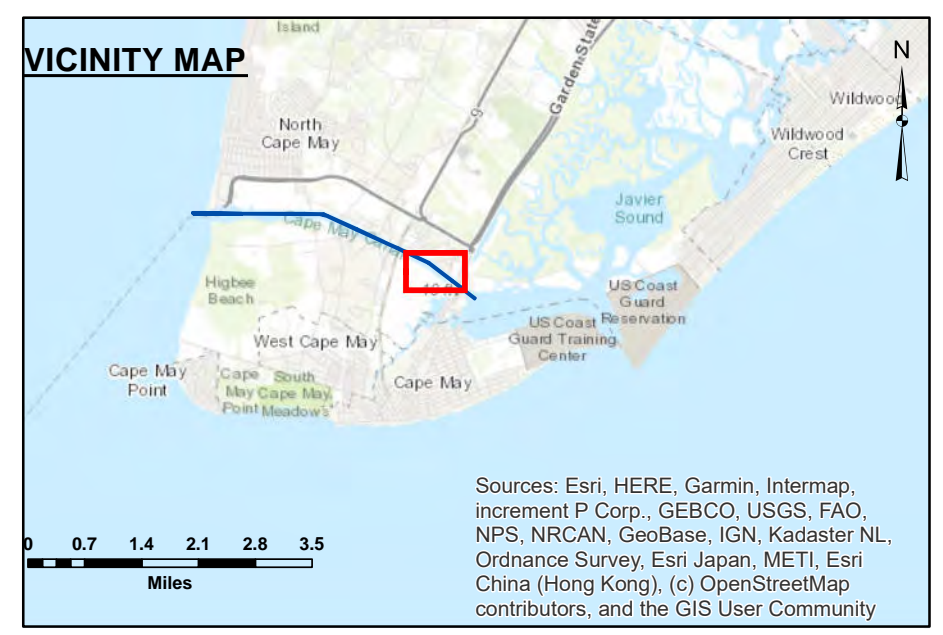
DISCLAIMER: This data is provided for general information only. It is not intended to be used for navigation or other purposes. The user assumes all responsibility for the accuracy and completeness of the data provided. The user agrees to hold the U.S. Army Corps of Engineers and its personnel harmless for any damages, claims, or liabilities resulting from the use of these materials and products.

U.S. ARMY CORPS OF ENGINEERS
 PHILADELPHIA DISTRICT

Surveyed By: _____
 Checked By: E. Anthony

Cape May Canal
 STA. -15+00 TO STA. 186+00
 EXAMINATION

E-CM-15

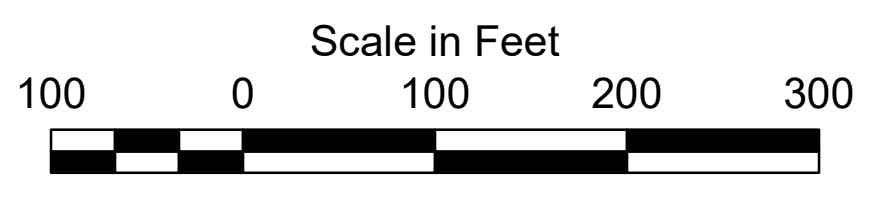


1. THIS SURVEY MEETS STANDARDS AS OUTLINED IN CORPS OF ENGINEERS' HYDROGRAPHIC SURVEY MANUAL EM1110-2-1003, DATED NOVEMBER 30, 2013 FOR NAVIGATION AND DREDGING SUPPORT SURVEYS.
2. HORIZONTAL REFERENCE - NAD 83, NEW JERSEY STATE PLANE, ZONE 2900, U.S. FOOT.
3. VERTICAL REFERENCE - MEAN LOWER LOW WATER, WHICH IS 3.02' BELOW N.A.V.D. 88.
4. NOAA TIDAL EPOCH: 1983 - 2001 WAS USED. SOUNDINGS ARE EXPRESSED IN FEET AND TENTHS AND REFER TO MEAN LOWER LOW WATER.

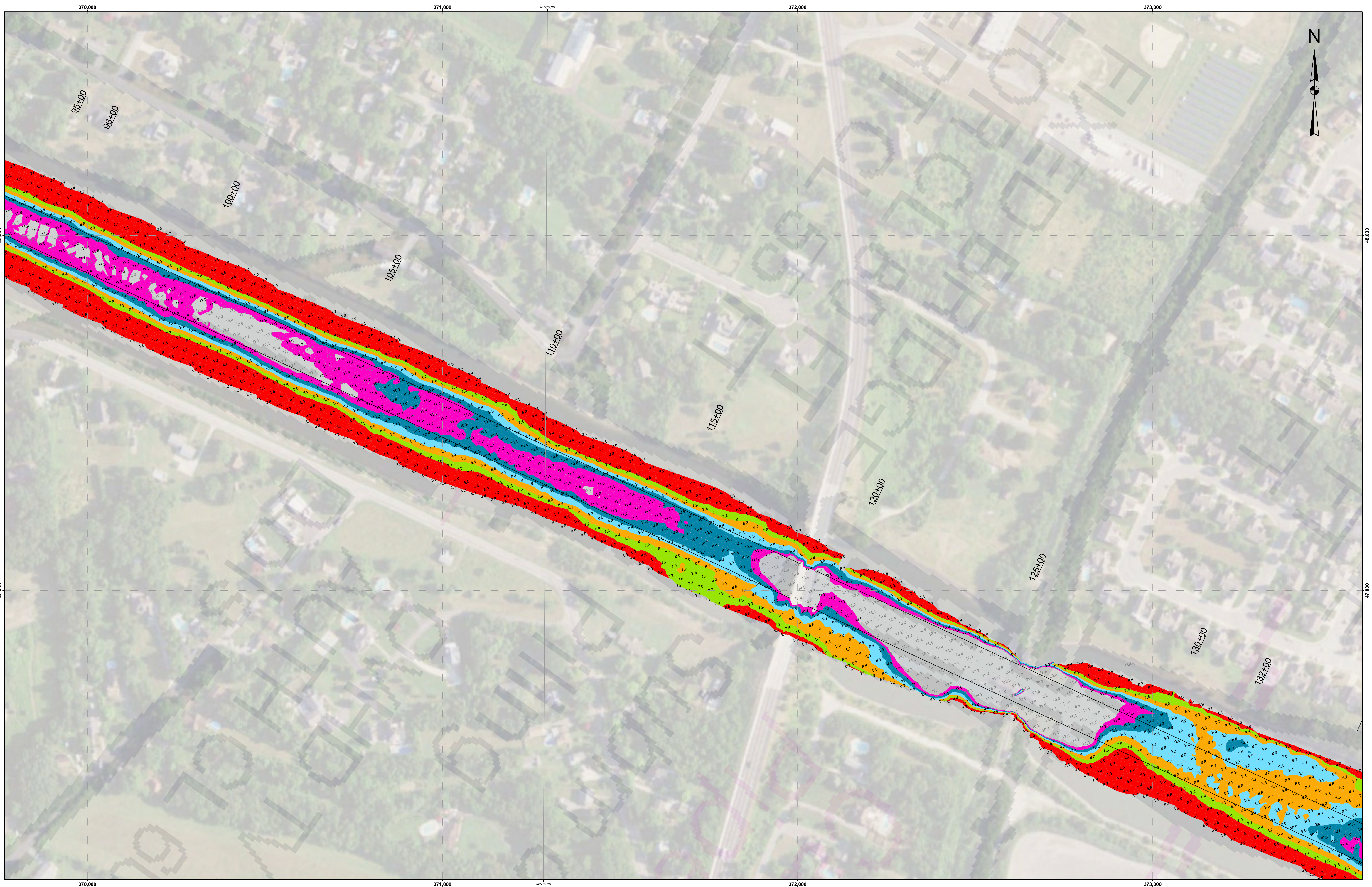
5. HYPACK, INC. SOFTWARE WAS USED TO PERFORM THE SOUNDING SELECTION AND CONTOUR GENERATION.
6. THE INFORMATION DEPICTED ON THIS MAP REPRESENT THE RESULTS OF SURVEYS MADE ON THE DATES INDICATED AND CAN ONLY BE CONSIDERED AS INDICATING THE GENERAL CONDITIONS EXISTING AT THAT TIME.

7. THE POSITIONS OF THE AIDS TO NAVIGATION ARE PROVIDED FOR INFORMATION ONLY, AND SHOULD NOT BE USED FOR NAVIGATION.
8. THE LIMITS OF THE FEDERAL CHANNEL DEPICT THE MOST CURRENT CHANNEL FRAMEWORK AVAILABLE WHICH CAN ALSO BE DOWNLOADED HERE:
<http://navigation.usace.army.mil/Survey/Framework>

9. BASE MAPPING LINEWORK OR ORTHOPHOTOGRAPHY HAS BEEN COMPILED FROM A VARIETY OF SOURCES AND DATES AND IS INTENDED TO PORTRAY GENERAL CHARACTERISTICS OF THE SHORELINE AND OTHER FEATURES. TEMPORAL CHANGES MAY HAVE OCCURRED SINCE THIS DATA SET WAS COLLECTED AND SOME PARTS OF THE DATA MAY NO LONGER BE AN ACCURATE REPRESENTATION OF THE SURFACE CONDITIONS.



Legend	
● Shoalest Sounding per Quarter	12 - 40
— Stations	11 - 12
— CenterLine	10 - 11
— ToeLine	9 - 10
	8 - 9
	7 - 8
	-1.18 - 7



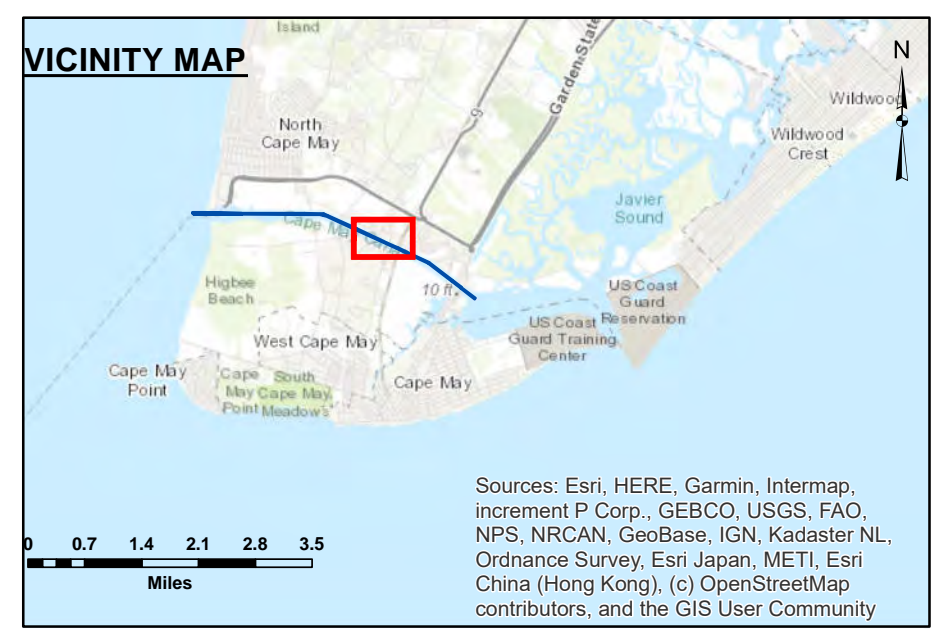
STA. -15+00 to STA. 20+00 -- 30 JAN 24
 STA. 20+00 to STA. 120+00 -- 29 JAN 24
 STA. 120+00 to STA. 202+00 -- 31 JAN 24

DISCLAIMER: This data is provided for general information only. It is not intended for use in navigation. The user assumes all responsibility for the use of this data. The Corps of Engineers is not responsible for any errors or omissions in this data. The Corps of Engineers is not responsible for any damage or injury resulting from the use of this data. The Corps of Engineers is not responsible for any loss of property or data resulting from the use of this data. The Corps of Engineers is not responsible for any other consequences resulting from the use of this data.

U.S. ARMY CORPS OF ENGINEERS
 PHILADELPHIA DISTRICT

Surveyed By: _____
 Checked By: _____

Cape May Canal
STA. -15+00 TO STA. 186+00
EXAMINATION

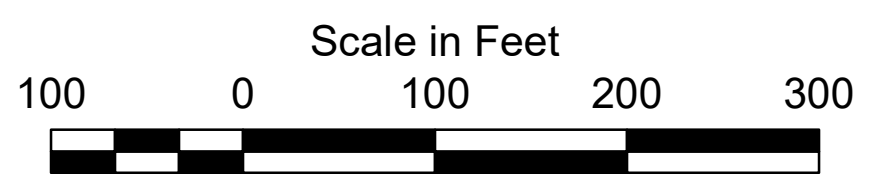


1. THIS SURVEY MEETS STANDARDS AS OUTLINED IN CORPS OF ENGINEERS' HYDROGRAPHIC SURVEY MANUAL EM1110-2-1003, DATED NOVEMBER 30, 2013 FOR NAVIGATION AND DREDGING SUPPORT SURVEYS.
2. HORIZONTAL REFERENCE - NAD 83, NEW JERSEY STATE PLANE, ZONE 2900, U.S. FOOT.
3. VERTICAL REFERENCE - MEAN LOWER LOW WATER, WHICH IS 3.02' BELOW N.A.V.D. 88.
4. NOAA TIDAL EPOCH: 1983 - 2001 WAS USED. SOUNDINGS ARE EXPRESSED IN FEET AND TENTHS AND REFER TO MEAN LOWER LOW WATER.

5. HYPACK, INC. SOFTWARE WAS USED TO PERFORM THE SOUNDING SELECTION AND CONTOUR GENERATION.
6. THE INFORMATION DEPICTED ON THIS MAP REPRESENT THE RESULTS OF SURVEYS MADE ON THE DATES INDICATED AND CAN ONLY BE CONSIDERED AS INDICATING THE GENERAL CONDITIONS EXISTING AT THAT TIME.

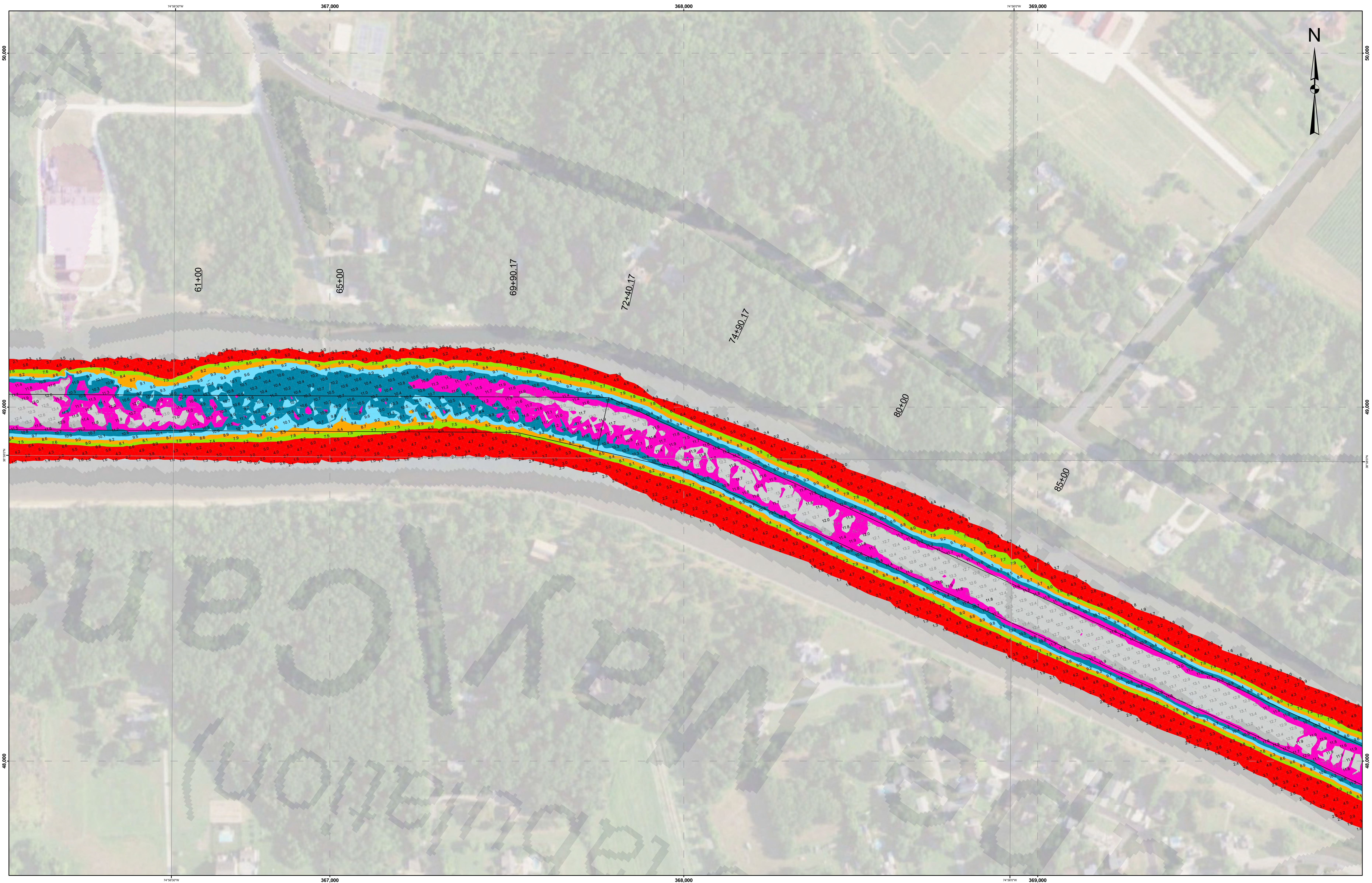
7. THE POSITIONS OF THE AIDS TO NAVIGATION ARE PROVIDED FOR INFORMATION ONLY, AND SHOULD NOT BE USED FOR NAVIGATION.
8. THE LIMITS OF THE FEDERAL CHANNEL DEPICT THE MOST CURRENT CHANNEL FRAMEWORK AVAILABLE WHICH CAN ALSO BE DOWNLOADED HERE:
<http://navigation.usace.army.mil/Survey/Framework>

9. BASE MAPPING LINEWORK OR ORTHOPHOTOGRAPHY HAS BEEN COMPILED FROM A VARIETY OF SOURCES AND DATES AND IS INTENDED TO PORTRAY GENERAL CHARACTERISTICS OF THE SHORELINE AND OTHER FEATURES. TEMPORAL CHANGES MAY HAVE OCCURRED SINCE THIS DATA SET WAS COLLECTED AND SOME PARTS OF THE DATA MAY NO LONGER BE AN ACCURATE REPRESENTATION OF THE SURFACE CONDITIONS.



Legend	
● Shoalest Sounding per Quarter	12 - 40
— Stations	11 - 12
— CenterLine	10 - 11
— ToeLine	9 - 10
	8 - 9
	7 - 8
	-1.18 - 7

E-CM-15

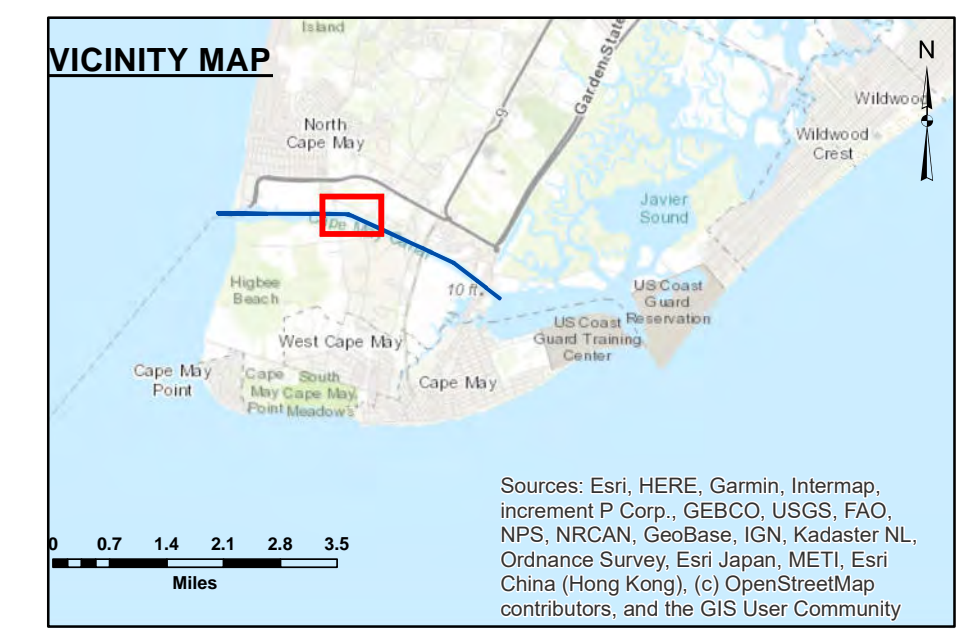


STA. -15+00 TO STA. 20+00 -- 30 JAN 24
 STA. 20+00 TO STA. 120+00 -- 29 JAN 24
 STA. 120+00 TO STA. 202+00 -- 31 JAN 24

DISCLAIMER
 This data is provided for general information only. It is not intended for use in navigation. The data was collected using a variety of methods and may not be as accurate as other data. The data is provided as is and the user assumes all responsibility for its use. The data is not to be used for navigation or other purposes without the express written consent of the U.S. Army Corps of Engineers Philadelphia District. The data is not to be used for navigation or other purposes without the express written consent of the U.S. Army Corps of Engineers Philadelphia District. The data is not to be used for navigation or other purposes without the express written consent of the U.S. Army Corps of Engineers Philadelphia District.

Surveyed By: _____
 Checked By: _____
 U.S. ARMY CORPS OF ENGINEERS
 PHILADELPHIA DISTRICT

**Cape May Canal
 STA. -15+00 TO STA. 186+00
 EXAMINATION**

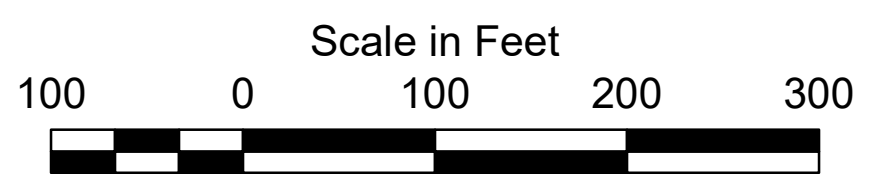


1. THIS SURVEY MEETS STANDARDS AS OUTLINED IN CORPS OF ENGINEERS' HYDROGRAPHIC SURVEY MANUAL EM1110-2-1003, DATED NOVEMBER 30, 2013 FOR NAVIGATION AND DREDGING SUPPORT SURVEYS.
2. HORIZONTAL REFERENCE - NAD 83, NEW JERSEY STATE PLANE, ZONE 2900, U.S. FOOT.
3. VERTICAL REFERENCE - MEAN LOWER LOW WATER, WHICH IS 3.02' BELOW N.A.V.D. 88.
4. NOAA TIDAL EPOCH: 1983 - 2001 WAS USED. SOUNDINGS ARE EXPRESSED IN FEET AND TENTHS AND REFER TO MEAN LOWER LOW WATER.

5. HYPACK, INC. SOFTWARE WAS USED TO PERFORM THE SOUNDING SELECTION AND CONTOUR GENERATION.
6. THE INFORMATION DEPICTED ON THIS MAP REPRESENT THE RESULTS OF SURVEYS MADE ON THE DATES INDICATED AND CAN ONLY BE CONSIDERED AS INDICATING THE GENERAL CONDITIONS EXISTING AT THAT TIME.

7. THE POSITIONS OF THE AIDS TO NAVIGATION ARE PROVIDED FOR INFORMATION ONLY, AND SHOULD NOT BE USED FOR NAVIGATION.
8. THE LIMITS OF THE FEDERAL CHANNEL DEPICT THE MOST CURRENT CHANNEL FRAMEWORK AVAILABLE WHICH CAN ALSO BE DOWNLOADED HERE:
<http://navigation.usace.army.mil/Survey/Framework>

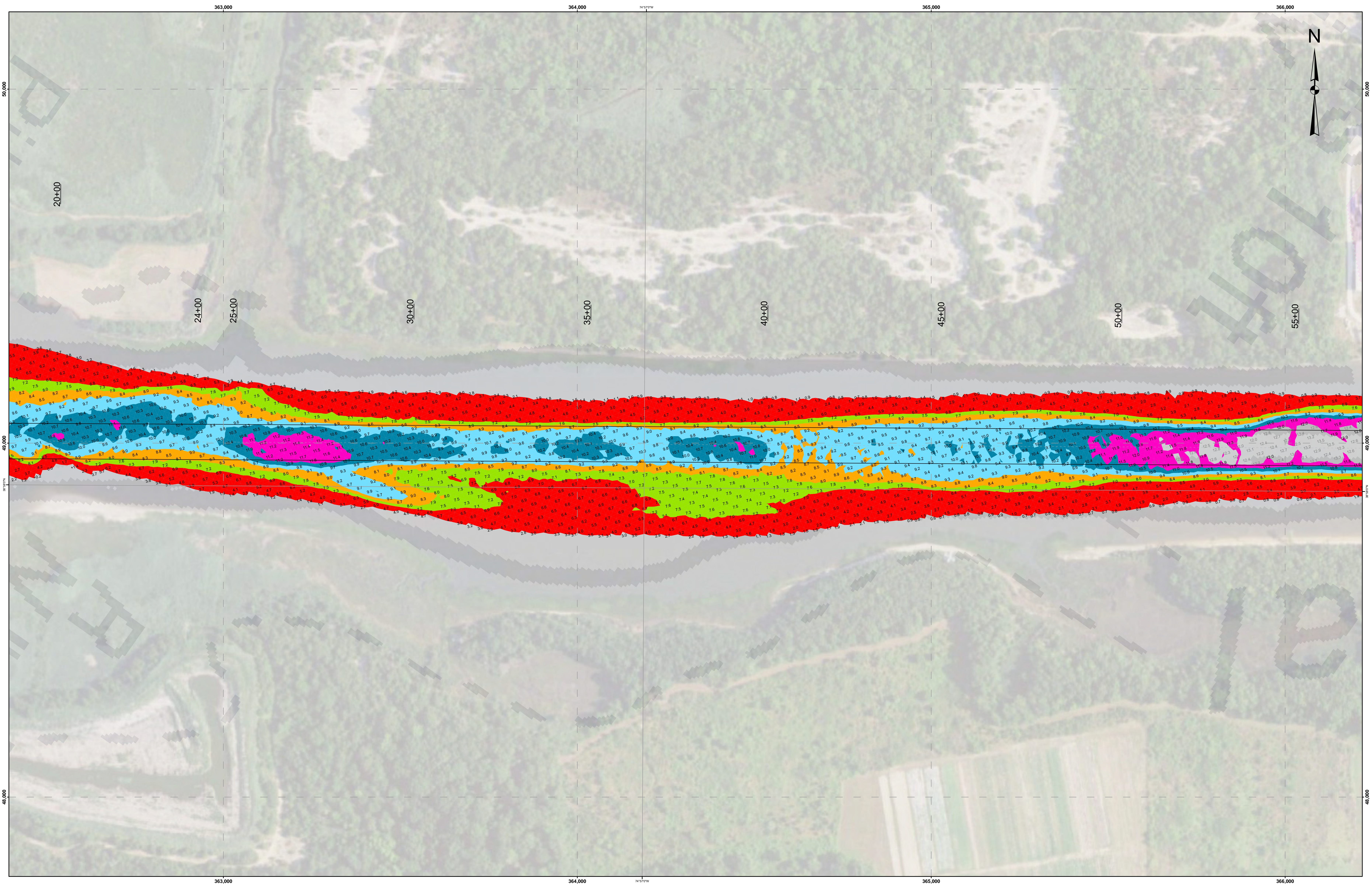
9. BASE MAPPING LINEWORK OR ORTHOPHOTOGRAPHY HAS BEEN COMPILED FROM A VARIETY OF SOURCES AND DATES AND IS INTENDED TO PORTRAY GENERAL CHARACTERISTICS OF THE SHORELINE AND OTHER FEATURES. TEMPORAL CHANGES MAY HAVE OCCURRED SINCE THIS DATA SET WAS COLLECTED AND SOME PARTS OF THE DATA MAY NO LONGER BE AN ACCURATE REPRESENTATION OF THE SURFACE CONDITIONS.



Legend

- Shoalest Sounding per Quarter 12 - 40
- Stations 11 - 12
- CenterLine 10 - 11
- ToeLine 9 - 10
- 8 - 9
- 7 - 8
- 6 - 7
- 5 - 6
- 4 - 5
- 3 - 4
- 2 - 3
- 1 - 2
- 0 - 1
- 1.18 - 0

E-CM-15



STA. -15+00 TO STA. 20+00 -- 30 JAN 24
 STA. 20+00 TO STA. 120+00 -- 29 JAN 24
 STA. 120+00 TO STA. 202+00 -- 31 JAN 24

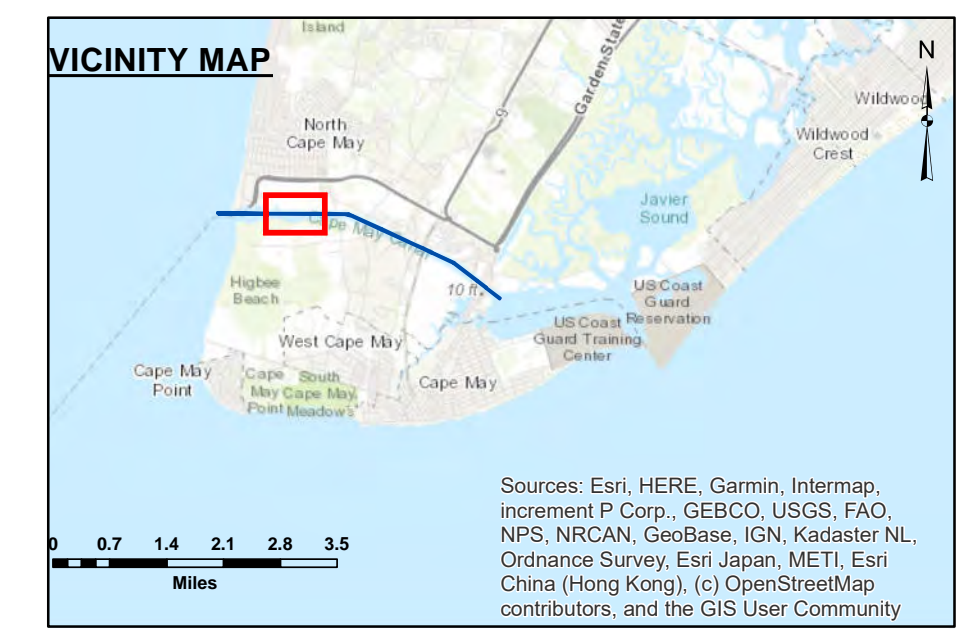
The materials are provided "as is." The government makes no representation or warranty, either expressed or implied, including but not limited to, the accuracy, completeness, or timeliness of the data provided. The government shall not be liable for any errors or omissions in the data provided, or for any consequences arising from the use of the data provided, or for any damages, including consequential, special, or incidental damages, or for any loss of profits or business, or for any other damages, or for any other consequences arising from the use of the data provided.

This data is provided for general information only. It is not intended for use in navigation. The data is based on a variety of sources and dates and is intended to portray general characteristics of the shoreline and other features. Temporal changes may have occurred since this data set was collected and some parts of the data may no longer be an accurate representation of the surface conditions.

Surveyed By: _____
 Checked By: _____
 U.S. ARMY CORPS OF ENGINEERS
 PHILADELPHIA DISTRICT
 Prepared By: E. Anthony
 Approved: _____
 Chief, Survey Section

Cape May Canal
 STA. -15+00 TO STA. 186+00
 EXAMINATION

E-CM-15

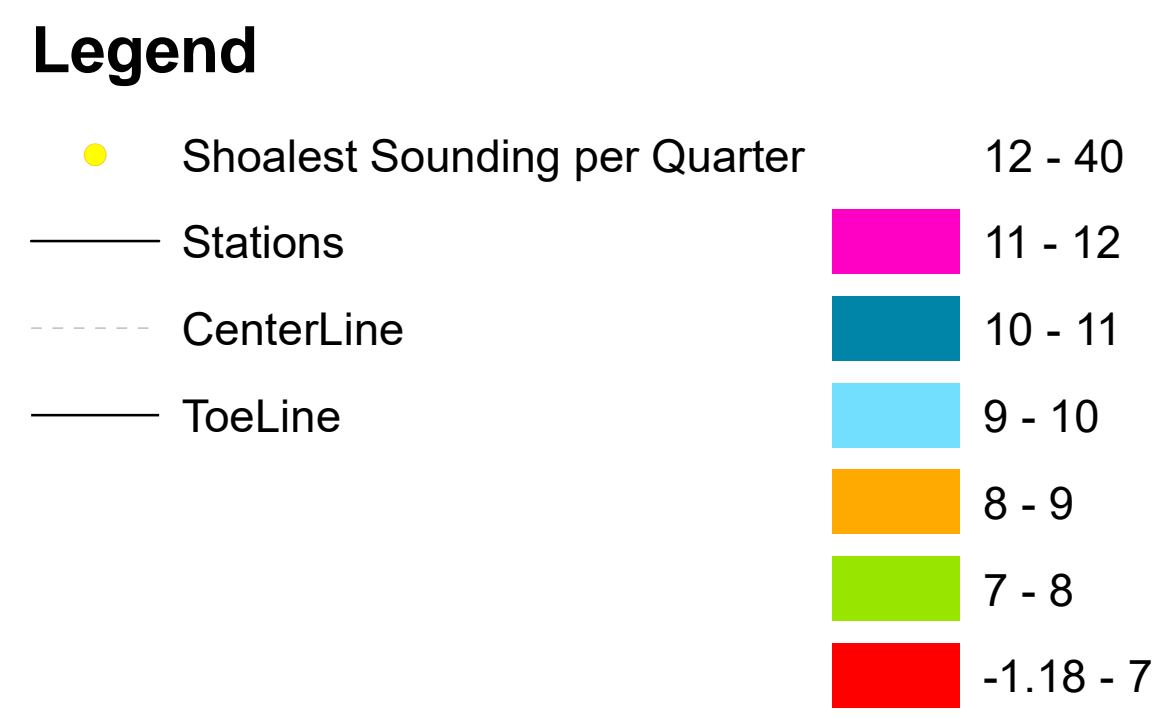
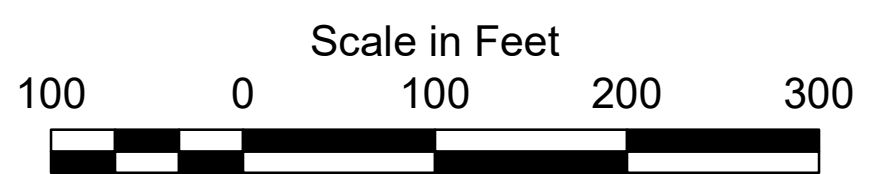


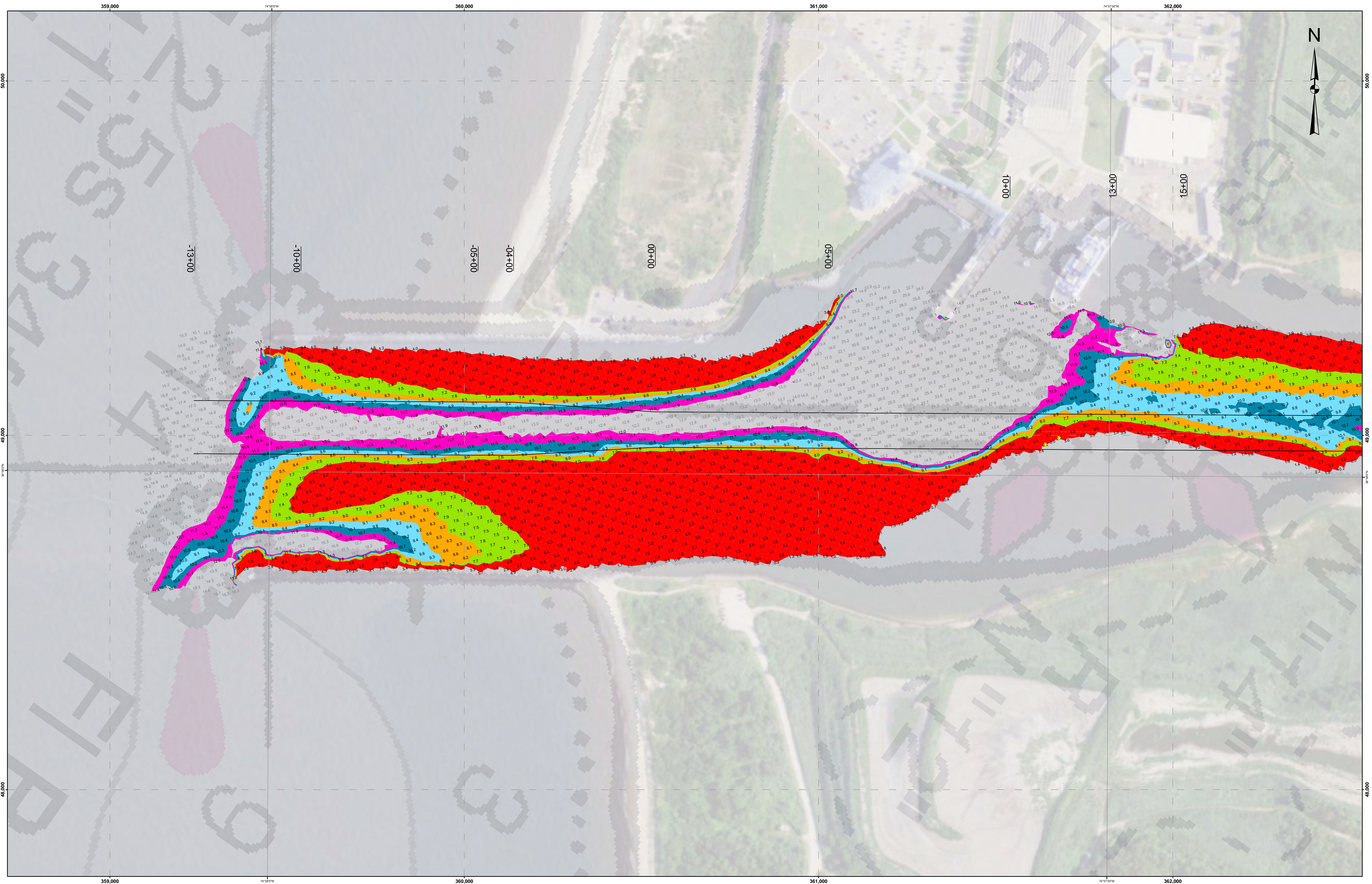
1. THIS SURVEY MEETS STANDARDS AS OUTLINED IN CORPS OF ENGINEERS' HYDROGRAPHIC SURVEY MANUAL EM1110-2-1003, DATED NOVEMBER 30, 2013 FOR NAVIGATION AND DREDGING SUPPORT SURVEYS.
2. HORIZONTAL REFERENCE - NAD 83, NEW JERSEY STATE PLANE, ZONE 2900, U.S. FOOT.
3. VERTICAL REFERENCE - MEAN LOWER LOW WATER, WHICH IS 3.02' BELOW N.A.V.D. 88.
4. NOAA TIDAL EPOCH: 1983 - 2001 WAS USED. SOUNDINGS ARE EXPRESSED IN FEET AND TENTHS AND REFER TO MEAN LOWER LOW WATER.

5. HYPACK, INC. SOFTWARE WAS USED TO PERFORM THE SOUNDING SELECTION AND CONTOUR GENERATION.
6. THE INFORMATION DEPICTED ON THIS MAP REPRESENT THE RESULTS OF SURVEYS MADE ON THE DATES INDICATED AND CAN ONLY BE CONSIDERED AS INDICATING THE GENERAL CONDITIONS EXISTING AT THAT TIME.

7. THE POSITIONS OF THE AIDS TO NAVIGATION ARE PROVIDED FOR INFORMATION ONLY, AND SHOULD NOT BE USED FOR NAVIGATION.
8. THE LIMITS OF THE FEDERAL CHANNEL DEPICT THE MOST CURRENT CHANNEL FRAMEWORK AVAILABLE WHICH CAN ALSO BE DOWNLOADED HERE:
<http://navigation.usace.army.mil/Survey/Framework>

9. BASE MAPPING LINEWORK OR ORTHOPHOTOGRAPHY HAS BEEN COMPILED FROM A VARIETY OF SOURCES AND DATES AND IS INTENDED TO PORTRAY GENERAL CHARACTERISTICS OF THE SHORELINE AND OTHER FEATURES. TEMPORAL CHANGES MAY HAVE OCCURRED SINCE THIS DATA SET WAS COLLECTED AND SOME PARTS OF THE DATA MAY NO LONGER BE AN ACCURATE REPRESENTATION OF THE SURFACE CONDITIONS.





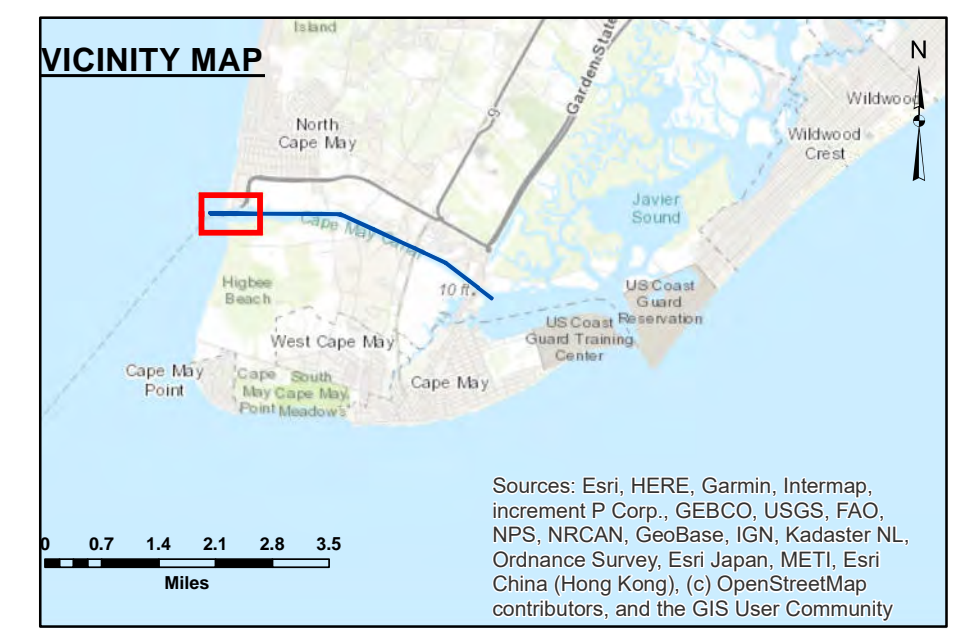
STA. -15+00 to STA. 20+00 -- 30 JAN 24
 STA. 20+00 to STA. 120+00 -- 29 JAN 24
 STA. 120+00 to STA. 202+00 -- 31 JAN 24

DISCLAIMER
 This data is provided for general information only. It is not intended for use in navigation or for any other purpose. The Corps of Engineers is not responsible for any errors or omissions in this data. Users should verify the accuracy of this data before using it for any purpose. The Corps of Engineers is not responsible for any damage or injury resulting from the use of this data.

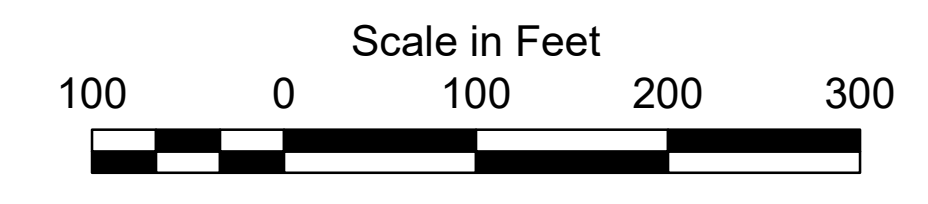
Surveyed By: _____
 Checked By: _____
 U.S. ARMY CORPS OF ENGINEERS PHILADELPHIA DISTRICT

Cape May Canal
 STA. -15+00 TO STA. 186+00
 EXAMINATION

E-CM-15



- THIS SURVEY MEETS STANDARDS AS OUTLINED IN CORPS OF ENGINEERS' HYDROGRAPHIC SURVEY MANUAL EM1110-2-1003, DATED NOVEMBER 30, 2013 FOR NAVIGATION AND DREDGING SUPPORT SURVEYS.
- HORIZONTAL REFERENCE - NAD 83, NEW JERSEY STATE PLANE, ZONE 2900, U.S. FOOT.
- VERTICAL REFERENCE - MEAN LOWER LOW WATER, WHICH IS 3.02' BELOW N.A.V.D. 88.
- NOAA TIDAL EPOCH: 1983 - 2001 WAS USED. SOUNDINGS ARE EXPRESSED IN FEET AND TENTHS AND REFER TO MEAN LOWER LOW WATER.
- HYPACK, INC. SOFTWARE WAS USED TO PERFORM THE SOUNDING SELECTION AND CONTOUR GENERATION.
- THE INFORMATION DEPICTED ON THIS MAP REPRESENT THE RESULTS OF SURVEYS MADE ON THE DATES INDICATED AND CAN ONLY BE CONSIDERED AS INDICATING THE GENERAL CONDITIONS EXISTING AT THAT TIME.
- THE POSITIONS OF THE AIDS TO NAVIGATION ARE PROVIDED FOR INFORMATION ONLY, AND SHOULD NOT BE USED FOR NAVIGATION.
- THE LIMITS OF THE FEDERAL CHANNEL DEPICT THE MOST CURRENT CHANNEL FRAMEWORK AVAILABLE WHICH CAN ALSO BE DOWNLOADED HERE: <http://navigation.usace.army.mil/Survey/Framework>
- BASE MAPPING LINEWORK OR ORTHOPHOTOGRAPHY HAS BEEN COMPILED FROM A VARIETY OF SOURCES AND DATES AND IS INTENDED TO PORTRAY GENERAL CHARACTERISTICS OF THE SHORELINE AND OTHER FEATURES. TEMPORAL CHANGES MAY HAVE OCCURRED SINCE THIS DATA SET WAS COLLECTED AND SOME PARTS OF THE DATA MAY NO LONGER BE AN ACCURATE REPRESENTATION OF THE SURFACE CONDITIONS.



Legend

● Shoalest Sounding per Quarter	12 - 40
— Stations	11 - 12
— CenterLine	10 - 11
— ToeLine	9 - 10
	8 - 9
	7 - 8
	-1.18 - 7