

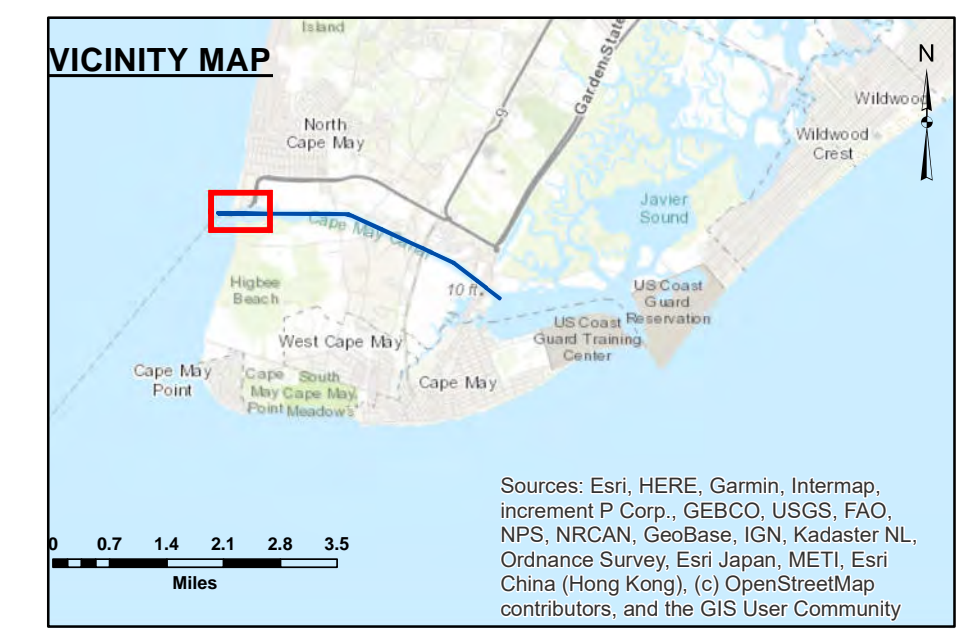
CAPE MAY FERRY AREA -- 29 APR 24

**DISCLAIMER:**  
This data is provided for general information only. It is not intended for use in navigation. The Corps of Engineers and its contractors make no warranty, expressed or implied, for the use of this data for any purpose other than that for which it was collected. The Corps of Engineers and its contractors are not responsible for any errors or omissions in this data, or for any consequences arising from the use of this data. The user assumes all liability for any use of this data.

**U.S. ARMY CORPS OF ENGINEERS PHILADELPHIA DISTRICT**  
 Surveyed By: \_\_\_\_\_  
 Plotted By: E. Anthony  
 Checked By: \_\_\_\_\_  
 Approved: \_\_\_\_\_  
 Chief, Surveying Section

**Cape May Canal STA. -15+00 TO STA. 186+00 AFTER DREDGE**

E-CM-17



1. THIS SURVEY MEETS STANDARDS AS OUTLINED IN CORPS OF ENGINEERS' HYDROGRAPHIC SURVEY MANUAL EM1110-2-1003, DATED NOVEMBER 30, 2013 FOR NAVIGATION AND DREDGING SUPPORT SURVEYS.
2. HORIZONTAL REFERENCE - NAD 83, NEW JERSEY STATE PLANE, ZONE 2900, U.S. FOOT.
3. VERTICAL REFERENCE - MEAN LOWER LOW WATER, WHICH IS 3.02' BELOW N.A.V.D. 88.
4. NOAA TIDAL EPOCH: 1983 - 2001 WAS USED. SOUNDINGS ARE EXPRESSED IN FEET AND TENTHS AND REFER TO MEAN LOWER LOW WATER.
5. HYPACK, INC. SOFTWARE WAS USED TO PERFORM THE SOUNDING SELECTION AND CONTOUR GENERATION.
6. THE INFORMATION DEPICTED ON THIS MAP REPRESENT THE RESULTS OF SURVEYS MADE ON THE DATES INDICATED AND CAN ONLY BE CONSIDERED AS INDICATING THE GENERAL CONDITIONS EXISTING AT THAT TIME.
7. THE POSITIONS OF THE AIDS TO NAVIGATION ARE PROVIDED FOR INFORMATION ONLY, AND SHOULD NOT BE USED FOR NAVIGATION.
8. THE LIMITS OF THE FEDERAL CHANNEL DEPICT THE MOST CURRENT CHANNEL FRAMEWORK AVAILABLE WHICH CAN ALSO BE DOWNLOADED HERE: <http://navigation.usace.army.mil/Survey/Framework>
9. BASE MAPPING LINEWORK OR ORTHOPHOTOGRAPHY HAS BEEN COMPILED FROM A VARIETY OF SOURCES AND DATES AND IS INTENDED TO PORTRAY GENERAL CHARACTERISTICS OF THE SHORELINE AND OTHER FEATURES. TEMPORAL CHANGES MAY HAVE OCCURRED SINCE THIS DATA SET WAS COLLECTED AND SOME PARTS OF THE DATA MAY NO LONGER BE AN ACCURATE REPRESENTATION OF THE SURFACE CONDITIONS.

**Legend**

- Shoalest Sounding per Quarter
- ◆ Red Buoy
- Stations
- 12' Curve of Depth
- - - 13' Curve of Depth
- CenterLine
- ToeLine

Scale in Feet  
 100 0 100 200 300