

-1+000 to 0+000 -- 14 FEB 25
0+000 to 5+000 -- 11 FEB 25

The information provided on this map is for informational purposes only. It is not intended to be used as a navigational aid. The user is responsible for determining the accuracy and reliability of the information. The Corps of Engineers is not liable for any errors or omissions in this information. This information is provided as a service to the public and is not to be construed as an offer of insurance or any other financial product. The Corps of Engineers is not a financial institution and does not provide financial services. This information is provided as a service to the public and is not to be construed as an offer of insurance or any other financial product. The Corps of Engineers is not a financial institution and does not provide financial services.

U.S. ARMY CORPS OF ENGINEERS PHILADELPHIA DISTRICT
 Surveyed By: _____
 Checked By: _____
 E. Authority: _____
 Checked By: _____

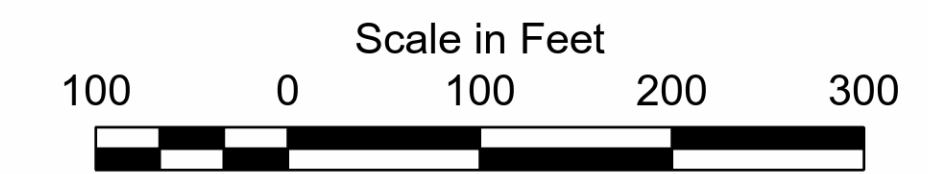
CAPE MAY COUNTY, N.J.
 CAPE MAY INLET
 BETWEEN JETTIES
 STA. 0+000 TO STA. 5+000

E-CS-28

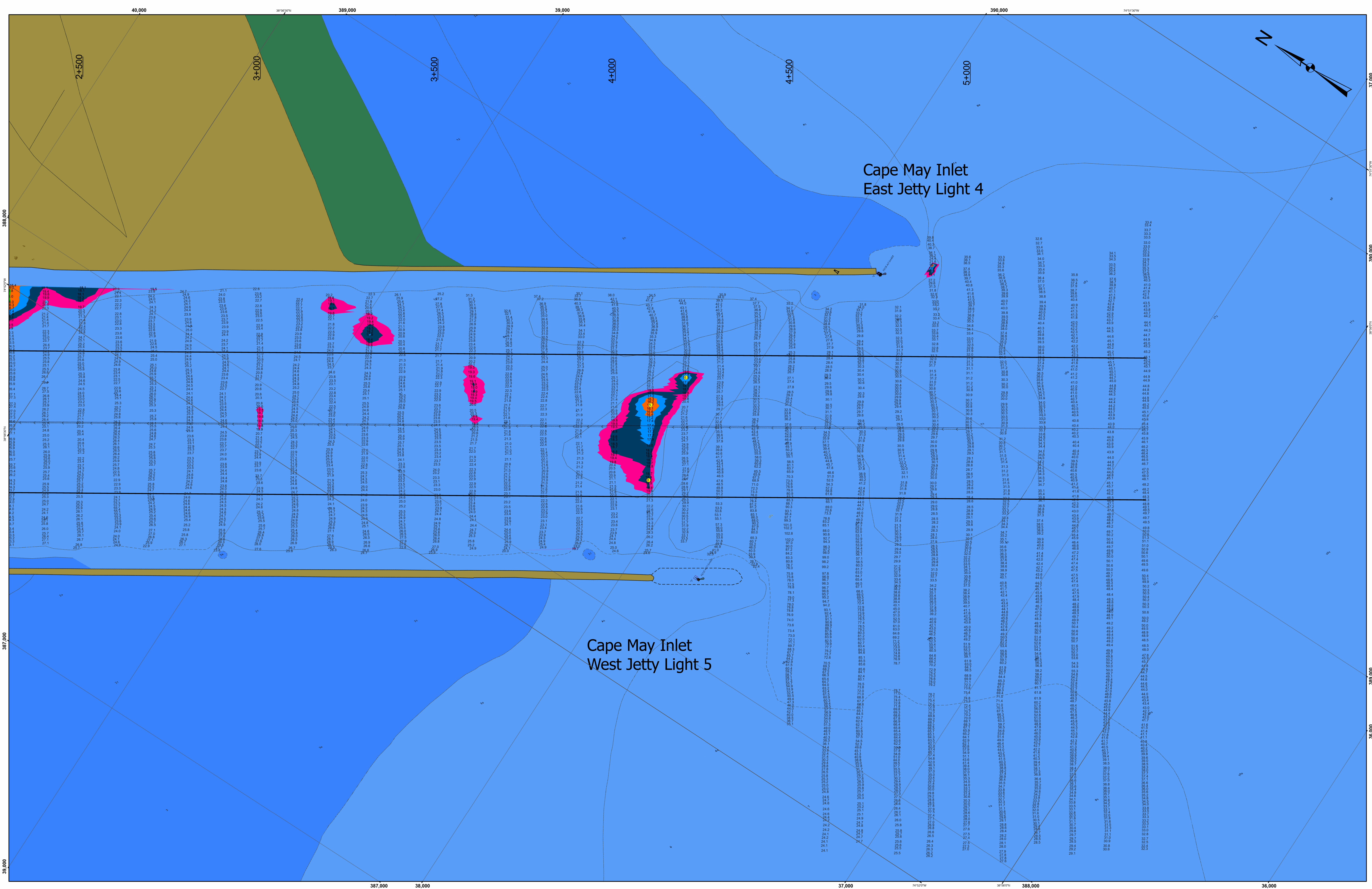


THIS SURVEY MEETS STANDARDS AS OUTLINED IN CORPS OF ENGINEERS' HYDROGRAPHIC SURVEY MANUAL EM1110-2-1003, DATED NOVEMBER 30, 2013 FOR NAVIGATION AND DREDGING SUPPORT SURVEYS.
 HORIZONTAL REFERENCE - NAD 83, NEW JERSEY STATE PLANE, ZONE 2900, U.S. FOOT.
 VERTICAL REFERENCE - MEAN LOWER LOW WATER, WHICH IS 2.70' BELOW N.A.V.D. 88.
 GEOID 18 AND NOAA TIDAL EPOCH: 1983 - 2001 WERE USED. SOUNDINGS ARE EXPRESSED IN FEET AND TENTHS AND REFER TO MEAN LOWER LOW WATER.
 THE INFORMATION DEPICTED ON THIS MAP REPRESENT THE RESULTS OF SURVEYS MADE ON THE DATES INDICATED AND CAN ONLY BE CONSIDERED AS INDICATING THE GENERAL CONDITIONS EXISTING AT THAT TIME.

THE POSITIONS OF THE AIDS TO NAVIGATION ARE PROVIDED FOR INFORMATION ONLY, AND SHOULD NOT BE USED FOR NAVIGATION.
 THE LIMITS OF THE FEDERAL CHANNEL DEPICT THE MOST CURRENT CHANNEL FRAMEWORK AVAILABLE WHICH CAN ALSO BE DOWNLOADED HERE:
<http://navigation.usace.army.mil/Survey/Framework>
 BASE MAPPING LINEWORK OR ORTHOPHOTOGRAPHY HAS BEEN COMPILED FROM A VARIETY OF SOURCES AND DATES AND IS INTENDED TO PORTRAY GENERAL CHARACTERISTICS OF THE SHORELINE AND OTHER FEATURES. TEMPORAL CHANGES MAY HAVE OCCURRED SINCE THIS DATA SET WAS COLLECTED AND SOME PARTS OF THE DATA MAY NO LONGER BE AN ACCURATE REPRESENTATION OF THE SURFACE CONDITIONS.



- Legend**
- Shoalest Sounding per Quarter 20 - 105
 - Center Line
 - Toe Line
 - Station Line
 - 19 - 20
 - 18 - 19
 - 17 - 18
 - 16 - 17
 - 15 - 16
 - 2.41 - 15

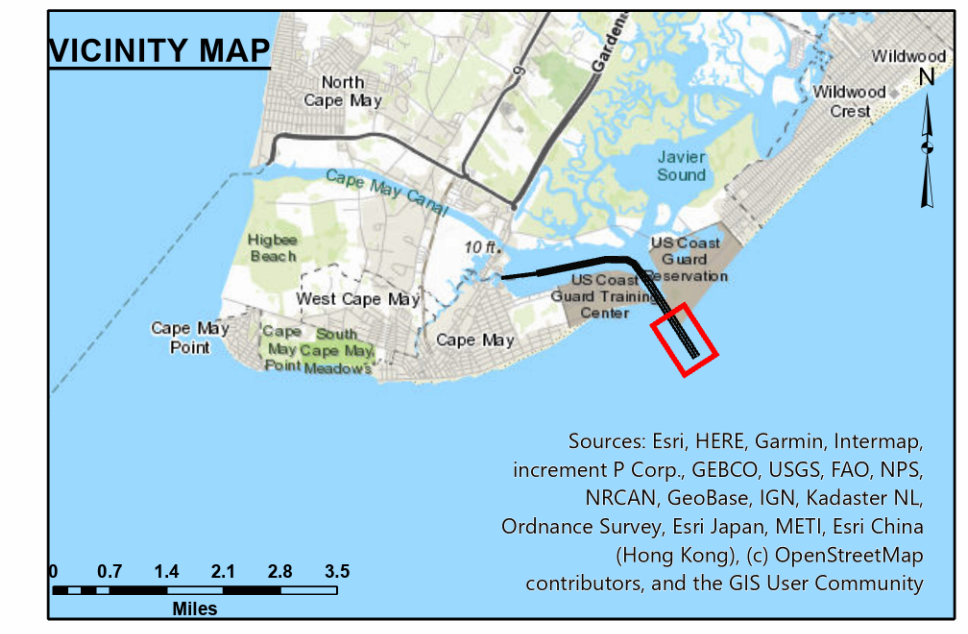


-1+000 to 0+000 -- 14 FEB 25
0+000 to 5+000 -- 11 FEB 25

The information provided in this document is for informational purposes only. It is not intended to be used as a basis for any legal or financial decisions. The user assumes all responsibility for the use of this information. The Corps of Engineers makes no warranty, expressed or implied, for the accuracy or completeness of the data provided. The Corps of Engineers is not responsible for any errors or omissions in this document. The Corps of Engineers is not responsible for any damage or injury resulting from the use of this information.

Surveyed By: E. Auditory
Checked By: Chief, Survey Station

CAPE MAY COUNTY, N.J.
CAPE MAY INLET
BETWEEN JETTIES
STA. 0+000 TO STA. 5+000



THIS SURVEY MEETS STANDARDS AS OUTLINED IN CORPS OF ENGINEERS' HYDROGRAPHIC SURVEY MANUAL EM1110-2-1003, DATED NOVEMBER 30, 2013 FOR NAVIGATION AND DREDGING SUPPORT SURVEYS.

HORIZONTAL REFERENCE - NAD 83, NEW JERSEY STATE PLANE, ZONE 2900, U.S. FOOT.

VERTICAL REFERENCE - MEAN LOWER LOW WATER, WHICH IS 2.70' BELOW N.A.V.D. 88.

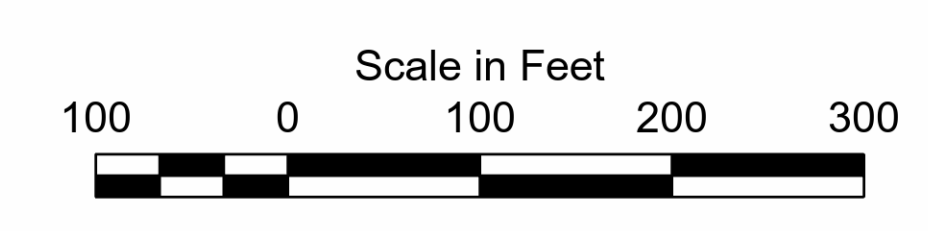
GEOD 18 AND NOAA TIDAL EPOCH: 1983 - 2001 WERE USED. SOUNDINGS ARE EXPRESSED IN FEET AND TENTHS AND REFER TO MEAN LOWER LOW WATER.

THE INFORMATION DEPICTED ON THIS MAP REPRESENT THE RESULTS OF SURVEYS MADE ON THE DATES INDICATED AND CAN ONLY BE CONSIDERED AS INDICATING THE GENERAL CONDITIONS EXISTING AT THAT TIME.

THE POSITIONS OF THE AIDS TO NAVIGATION ARE PROVIDED FOR INFORMATION ONLY, AND SHOULD NOT BE USED FOR NAVIGATION.

THE LIMITS OF THE FEDERAL CHANNEL DEPICT THE MOST CURRENT CHANNEL FRAMEWORK AVAILABLE WHICH CAN ALSO BE DOWNLOADED HERE:
<http://navigation.usace.army.mil/Survey/Framework>

BASE MAPPING LINEWORK OR ORTHOPHOGRAPHY HAS BEEN COMPILED FROM A VARIETY OF SOURCES AND DATES AND IS INTENDED TO PORTRAY GENERAL CHARACTERISTICS OF THE SHORLINE AND OTHER FEATURES. TEMPORAL CHANGES MAY HAVE OCCURRED SINCE THIS DATA SET WAS COLLECTED AND SOME PARTS OF THE DATA MAY NO LONGER BE AN ACCURATE REPRESENTATION OF THE SURFACE CONDITIONS.



- Legend**
- Shoalest Sounding per Quarter 20 - 105
 - Center Line
 - Toe Line
 - Station Line
 - 19 - 20
 - 18 - 19
 - 17 - 18
 - 16 - 17
 - 15 - 16
 - 2.41 - 15

E-CS-28