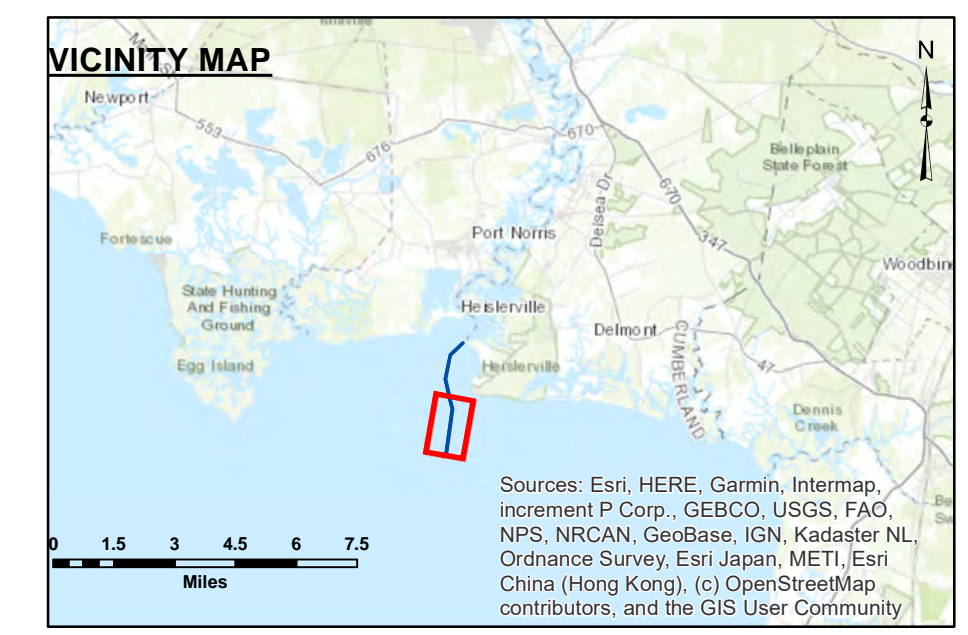


STA. 0+000 (approach) to STA. 2+400 (approach) - 02 APR 24
 STA. 2+400 (approach) to STA. 14+200 (approach) - 04 APR 24
 STA. 14+200 (approach) to STA. 15+528 (approach) - 02 APR 24

DISCLAIMER:
 This data was collected using a surveying instrument that is subject to the same limitations as any other surveying instrument. The data is provided for general information only and should not be used for navigation. The Corps of Engineers makes no representation or warranty, expressed or implied, regarding the accuracy, reliability, or completeness of the data provided. The user assumes all liability for any use of the data for purposes not intended by the Corps of Engineers.

Surveyed By: _____
 Checked By: _____
 U.S. ARMY CORPS OF ENGINEERS PHILADELPHIA DISTRICT

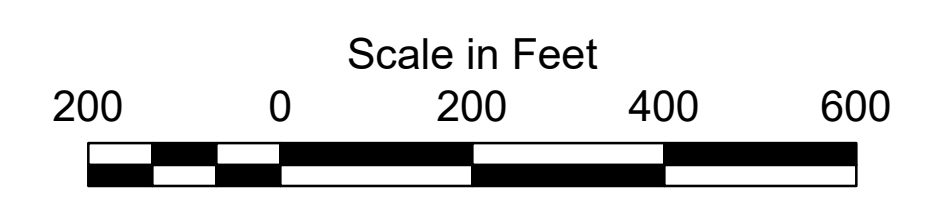


1. THIS SURVEY MEETS STANDARDS AS OUTLINED IN CORPS OF ENGINEERS' HYDROGRAPHIC SURVEY MANUAL EM1110-2-1003, DATED NOVEMBER 30, 2013 FOR NAVIGATION AND DREDGING SUPPORT SURVEYS.
2. HORIZONTAL REFERENCE - NAD 83, NEW JERSEY STATE PLANE, ZONE 2900, U.S. FOOT.
3. VERTICAL REFERENCE - MEAN LOWER LOW WATER, WHICH IS 3.41' BELOW N.A.V.D. 88.
4. GEOID 12B AND NOAA TIDAL EPOCH: 1983 - 2001 WERE USED. SOUNDINGS ARE EXPRESSED IN FEET AND TENTHS AND REFER TO MEAN LOWER LOW WATER.

5. CONTOURS WERE GENERATED USING THE MINIMUM DEPTH WITHIN SEARCH RADIUS OF 18'.
6. HYPACK, INC. SOFTWARE WAS USED TO PERFORM THE SOUNDING SELECTION AND CONTOUR GENERATION.
7. THE INFORMATION DEPICTED ON THIS MAP REPRESENT THE RESULTS OF SURVEYS MADE ON THE DATES INDICATED AND CAN ONLY BE CONSIDERED AS INDICATING THE GENERAL CONDITIONS EXISTING AT THAT TIME.

8. THE POSITIONS OF THE AIDS TO NAVIGATION ARE PROVIDED FOR INFORMATION ONLY, AND SHOULD NOT BE USED FOR NAVIGATION.
9. THE LIMITS OF THE FEDERAL CHANNEL DEPICT THE MOST CURRENT CHANNEL FRAMEWORK AVAILABLE WHICH CAN ALSO BE DOWNLOADED HERE:
<http://navigation.usace.army.mil/Survey/Framework>

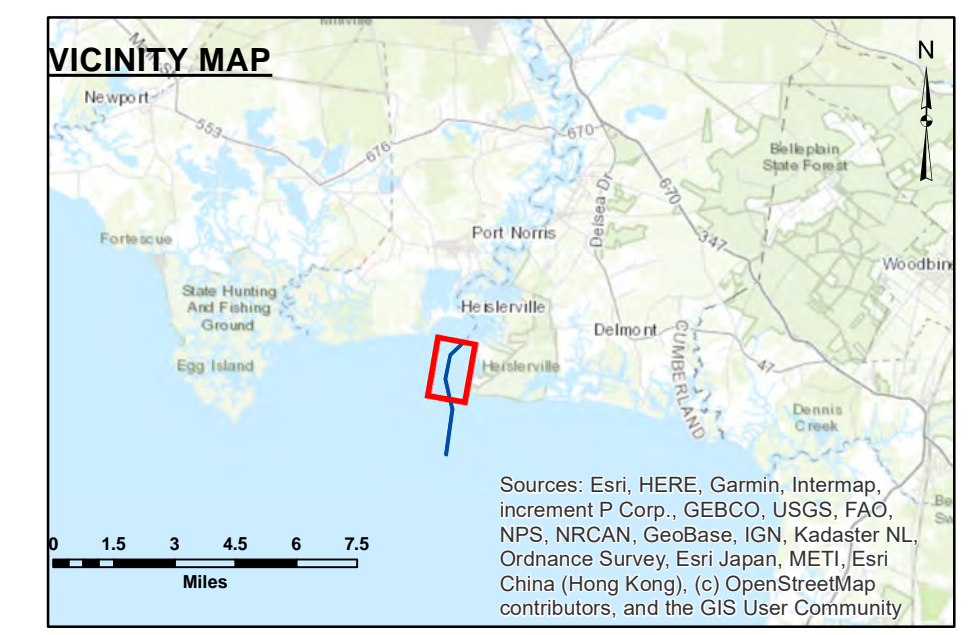
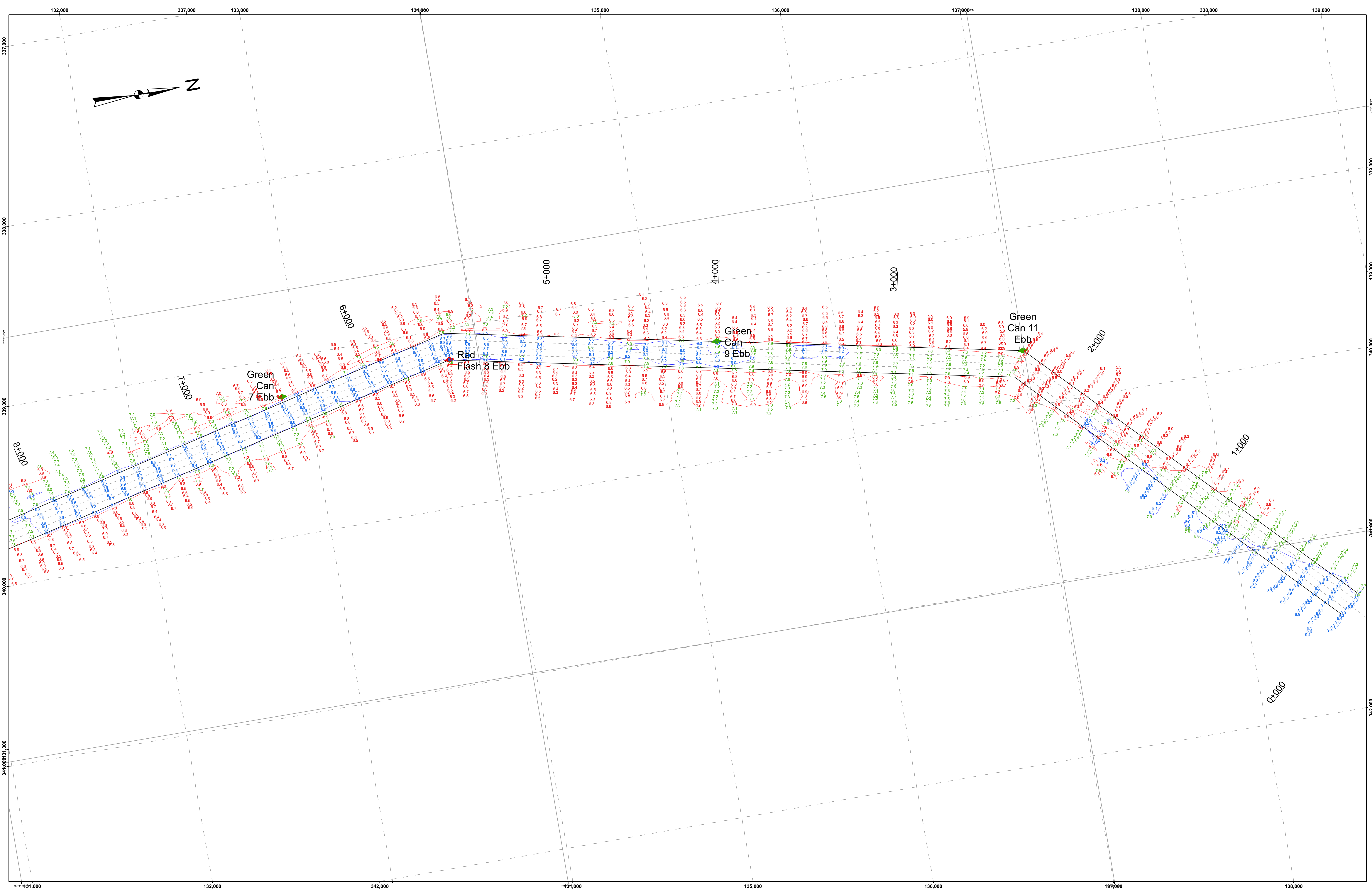
10. BASE MAPPING LINEWORK OR ORTHOPHOTOGRAPHY HAS BEEN COMPILED FROM A VARIETY OF SOURCES AND DATES AND IS INTENDED TO PORTRAY GENERAL CHARACTERISTICS OF THE SHORELINE AND OTHER FEATURES. TEMPORAL CHANGES MAY HAVE OCCURRED SINCE THIS DATA SET WAS COLLECTED AND SOME PARTS OF THE DATA MAY NO LONGER BE AN ACCURATE REPRESENTATION OF THE SURFACE CONDITIONS.



- 7' Curve of Depth
- 8' Curve of Depth
- CenterLine
- ToeLine
- QuarterLine
- StationLine

Maurice River, NJ Examination

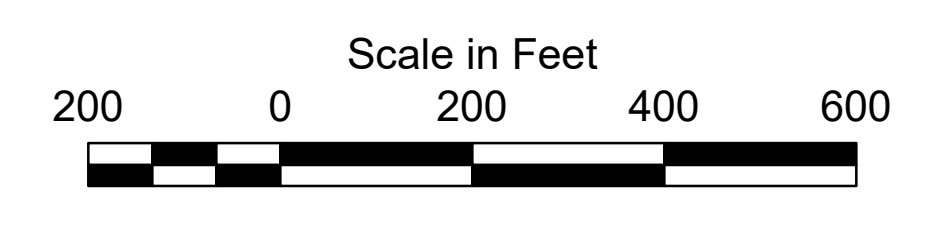
E-MA-06



1. THIS SURVEY MEETS STANDARDS AS OUTLINED IN CORPS OF ENGINEERS' HYDROGRAPHIC SURVEY MANUAL EM1110-2-1003, DATED NOVEMBER 30, 2013 FOR NAVIGATION AND DREDGING SUPPORT SURVEYS.
2. HORIZONTAL REFERENCE - NAD 83, NEW JERSEY STATE PLANE, ZONE 2900, U.S. FOOT.
3. VERTICAL REFERENCE - MEAN LOWER LOW WATER, WHICH IS 3.41' BELOW N.A.V.D. 88.
4. GEOID 12B AND NOAA TIDAL EPOCH: 1983 - 2001 WERE USED. SOUNDINGS ARE EXPRESSED IN FEET AND TENTHS AND REFER TO MEAN LOWER LOW WATER.

5. CONTOURS WERE GENERATED USING THE MINIMUM DEPTH WITHIN SEARCH RADIUS OF 18'.
6. HYPACK, INC. SOFTWARE WAS USED TO PERFORM THE SOUNDING SELECTION AND CONTOUR GENERATION.
7. THE INFORMATION DEPICTED ON THIS MAP REPRESENT THE RESULTS OF SURVEYS MADE ON THE DATES INDICATED AND CAN ONLY BE CONSIDERED AS INDICATING THE GENERAL CONDITIONS EXISTING AT THAT TIME.

8. THE POSITIONS OF THE AIDS TO NAVIGATION ARE PROVIDED FOR INFORMATION ONLY, AND SHOULD NOT BE USED FOR NAVIGATION.
9. THE LIMITS OF THE FEDERAL CHANNEL DEPICT THE MOST CURRENT CHANNEL FRAMEWORK AVAILABLE WHICH CAN ALSO BE DOWNLOADED HERE:
<http://navigation.usace.army.mil/Survey/Framework>



- 7' Curve of Depth
- 8' Curve of Depth
- CenterLine
- ToeLine
- QuarterLine
- StationLine

STA. 0+000 (approach) to STA. 2+400 (approach) - 02 APR 24
 STA. 2+400 (approach) to STA. 14+200 (approach) - 04 APR 24
 STA. 14+200 (approach) to STA. 15+528 (approach) - 02 APR 24

DISCLAIMER
 This data is provided for general information only. It is not intended for use in any project or for any purpose other than that for which it was collected. The user assumes all responsibility for the accuracy and completeness of the data provided. The user also assumes all responsibility for the accuracy and completeness of the data provided. The user also assumes all responsibility for the accuracy and completeness of the data provided.

Surveyed By: _____
 Checked By: _____
 U.S. ARMY CORPS OF ENGINEERS PHILADELPHIA DISTRICT

Maurice River, NJ Examination

E-MA-06