

THIS SURVEY MEETS STANDARDS AS OUTLINED IN CORPS OF ENGINEERS' HYDROGRAPHIC SURVEY MANUAL EM1110-2-1003, DATED NOVEMBER 30, 2013 FOR NAVIGATION AND DREDGING SUPPORT SURVEYS.

HORIZONTAL REFERENCE - NAD 83, NEW JERSEY STATE PLANE, ZONE 2900, U.S. FOOT.

VERTICAL REFERENCE - MEAN LOWER LOW WATER, WHICH IS 0.36' BELOW N.A.V.D. 88.

GEOID 18 AND NOAA TIDAL EPOCH: 1983 - 2001 WERE USED. SOUNDINGS ARE EXPRESSED IN FEET AND TENTHS AND REFER TO MEAN LOWER LOW WATER.

HYPACK, INC. SOFTWARE WAS USED TO PERFORM THE SOUNDING SELECTION AND CONTOUR GENERATION.

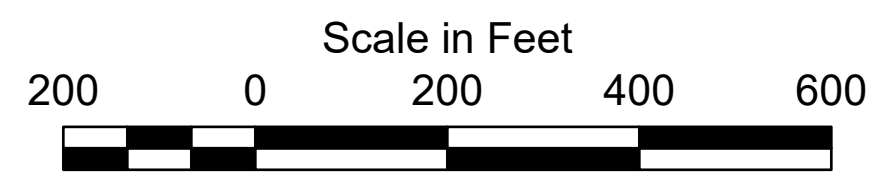
THE INFORMATION DEPICTED ON THIS MAP REPRESENT THE RESULTS OF SURVEYS MADE ON THE DATES INDICATED AND CAN ONLY BE CONSIDERED AS INDICATING THE GENERAL CONDITIONS EXISTING AT THAT TIME.

THE POSITIONS OF THE AIDS TO NAVIGATION ARE PROVIDED FOR INFORMATION ONLY, AND SHOULD NOT BE USED FOR NAVIGATION.

THE LIMITS OF THE FEDERAL CHANNEL DEPICT THE MOST CURRENT CHANNEL FRAMEWORK AVAILABLE WHICH CAN ALSO BE DOWNLOADED HERE:

<http://navigation.usace.army.mil/Survey/Framework>

BASE MAPPING LINEWORK OR ORTHOPHOTOGRAPHY HAS BEEN COMPILED FROM A VARIETY OF SOURCES AND DATES AND IS INTENDED TO PORTRAY GENERAL CHARACTERISTICS OF THE SHORELINE AND OTHER FEATURES. TEMPORAL CHANGES MAY HAVE OCCURRED SINCE THIS DATA SET WAS COLLECTED AND SOME PARTS OF THE DATA MAY NO LONGER BE AN ACCURATE REPRESENTATION OF THE SURFACE CONDITIONS.



### Legend

- Green Buoy
  - Red Buoy
  - Shoalest
  - Sounding per Quarter
  - Channel Framework
- 8 - 70
  - 7 - 8
  - 6 - 7
  - 5 - 6
  - 4 - 5
  - 3 - 4
  - 0 - 3



BI to BI 30 -- 16 DEC 24  
BI 30 to BI 19 -- 09 DEC 24  
BI 19 to BI 14 -- 10 DEC 24

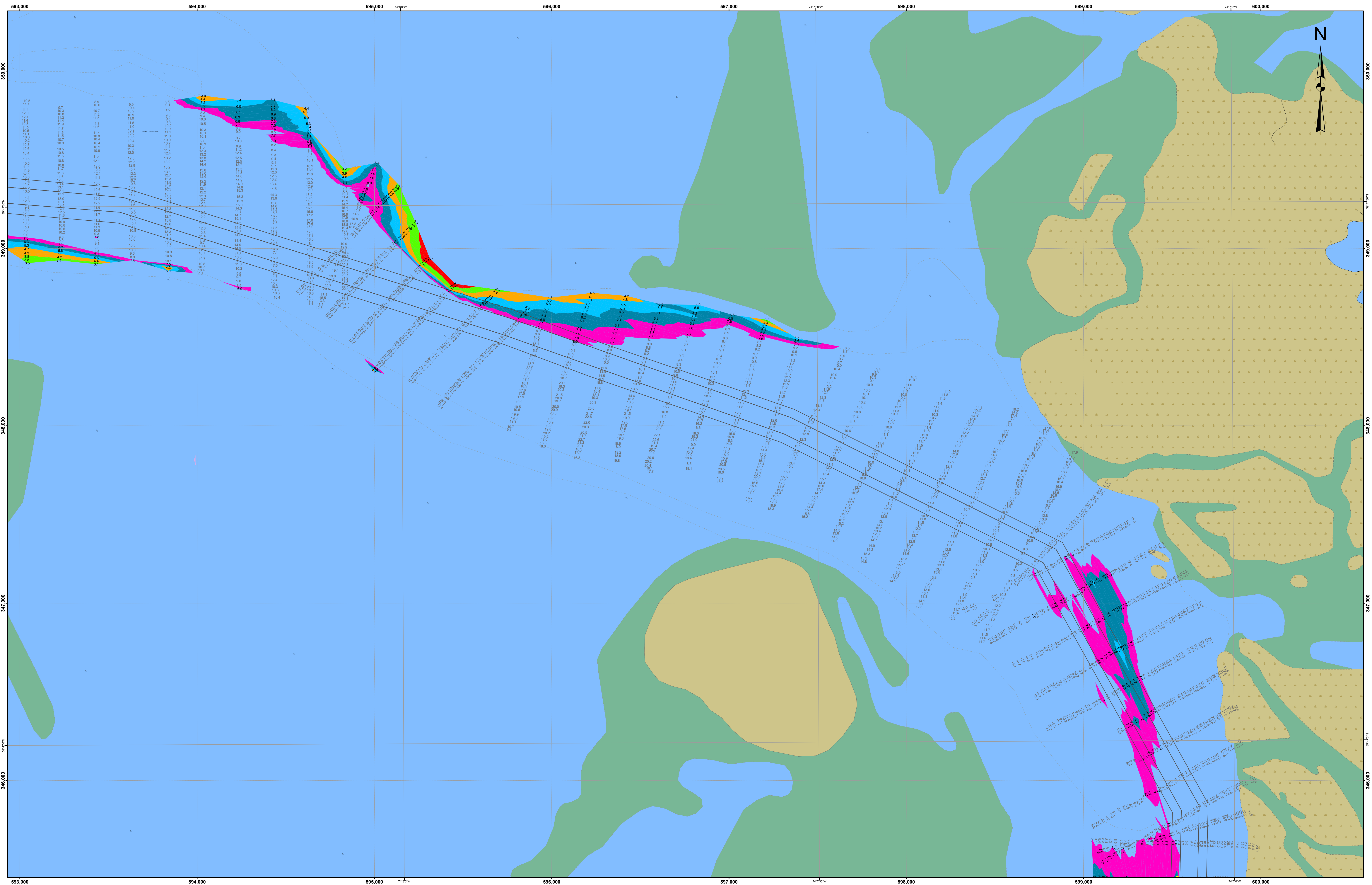
DISCLAIMER: This data is provided for general information only. It is not intended for use in navigation. The official navigational charts to be used in navigation are those published by the U.S. Coast and Geodetic Survey. This data is not a substitute for the official navigational charts. The data is provided for general information only and is not intended for use in navigation. The official navigational charts to be used in navigation are those published by the U.S. Coast and Geodetic Survey. This data is not a substitute for the official navigational charts.

U.S. ARMY CORPS OF ENGINEERS PHILADELPHIA DISTRICT	
Drawn By: E. Anthony	Plotted By: E. Anthony
Checked By: E. Anthony	Checked By: E. Anthony

BARNEGAT INLET  
BARNEGAT LIGHT, NEW JERSEY  
OYSTER CREEK CHANNEL  
EXAMINATION

E-BI-27





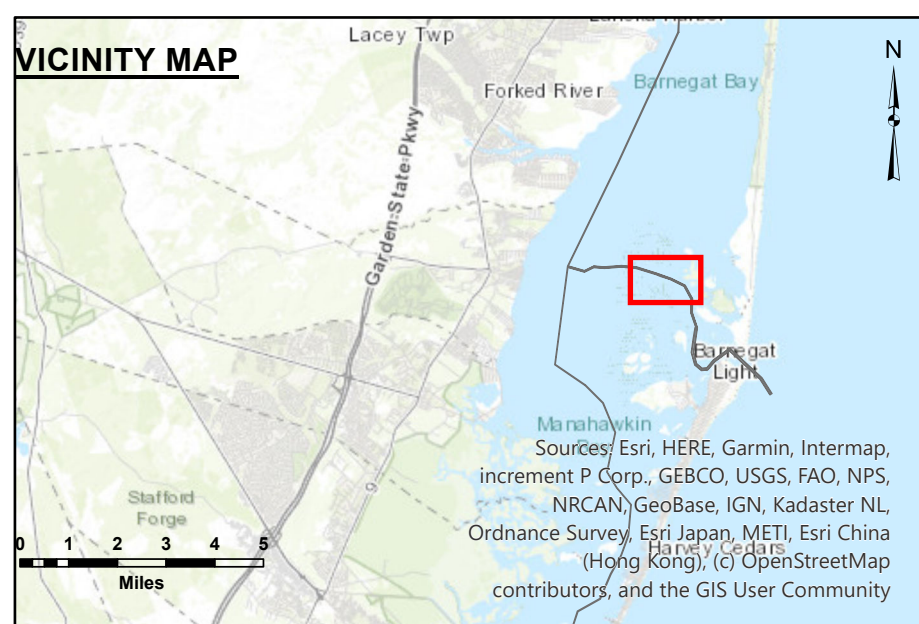
BI to BI 30 -- 16 DEC 24  
BI 30 to BI 19 -- 09 DEC 24  
BI 19 to BI 14 -- 10 DEC 24

It is not surprising that a new regulation, NAMA, penalizes the official inflation calculator to be used in the US states by markets. Any hypothetical use of this measure of inflation is not allowed. The new regulation of the US states is that, at least, hypothetical surveys are accurate only at the time they are measured and only for the purpose of measuring inflation. The new regulation, and other tools and equipment used to produce and print them, will drive waves, currents, and other maritime phenomena in the US states. The new regulation of the US states of the United States, using equipment and computer printing software have inherent inaccuracies, and printers and displays can also create inaccuracies.

Drawing No:	Plotted By:
Plot Scale	E. Anthony
Approved	Checked By:
	Chief, Survey Section

# ARNEGAT INLET AT LIGHT, NEW JERSEY RIVER CREEK CHANNEL EXAMINATION

E-BI-27



THIS SURVEY MEETS STANDARDS AS OUTLINED IN CORPS OF ENGINEERS' HYDROGRAPHIC SURVEY MANUAL EM1110-2-1.003, DATED NOVEMBER 30, 2013 FOR NAVIGATION AND DREDGING SUPPORT SURVEYS

HORIZONTAL REFERENCE - NAD 83, NEW JERSEY STATE PLANE, ZONE 2900, U.S. FOOT.

VERTICAL REFERENCE - MEAN LOWER LOW WATER, WHICH IS 0.36' BELOW N.A.V.D. 88.

GEOID 18 AND NOAA TIDAL EPOCH: 1983 - 2001 WERE USED. SOUNDINGS ARE EXPRESSED IN FEET AND TENTHS AND REFER TO MEAN LOWER LOW WATER.

HYPACK, INC. SOFTWARE WAS USED TO PERFORM THE SOUNDING SELECTION AND CONTOUR GENERATION.

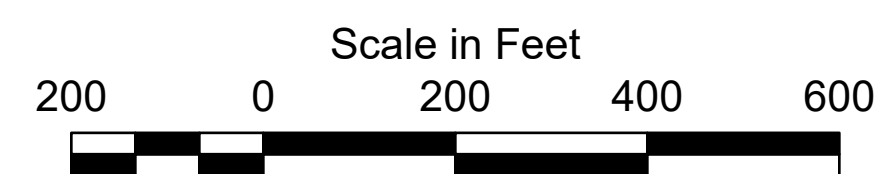
THE INFORMATION DEPICTED ON THIS MAP REPRESENT THE RESULTS OF  
SURVEYS MADE ON THE DATES INDICATED  
AND CAN ONLY BE CONSIDERED AS INDICATING THE GENERAL CONDITIONS  
EXISTING AT THAT TIME.

THE POSITIONS OF THE AIDS TO NAVIGATION ARE PROVIDED FOR INFORMATION ONLY, AND SHOULD NOT BE USED FOR NAVIGATION.



THE LIMITS OF THE FEDERAL CHANNEL  
DEPICT THE MOST CURRENT CHANNEL  
FRAMEWORK AVAILABLE WHICH CAN ALSO BE DOWNLOADED HERE:

<http://navigation.usace.army.mil/Survey/Framework>

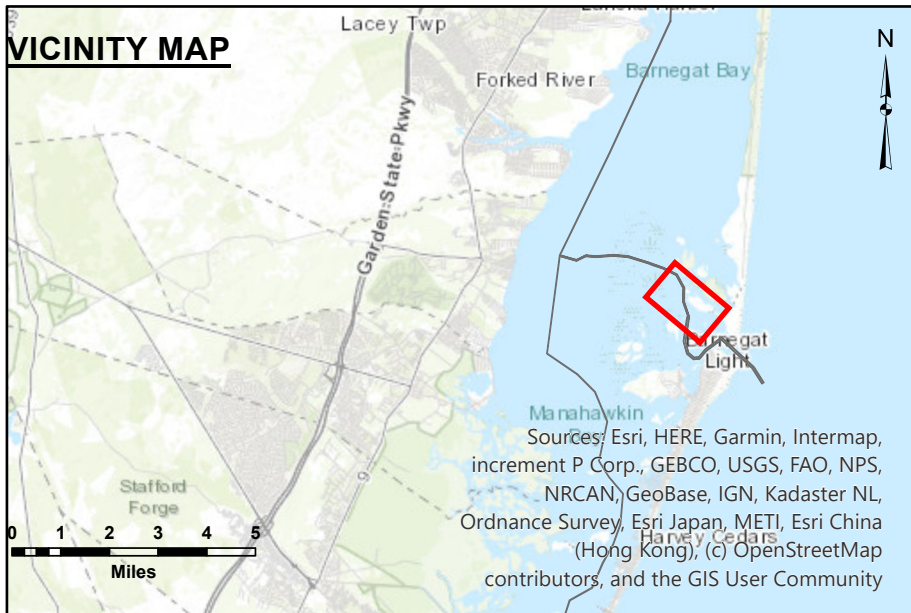
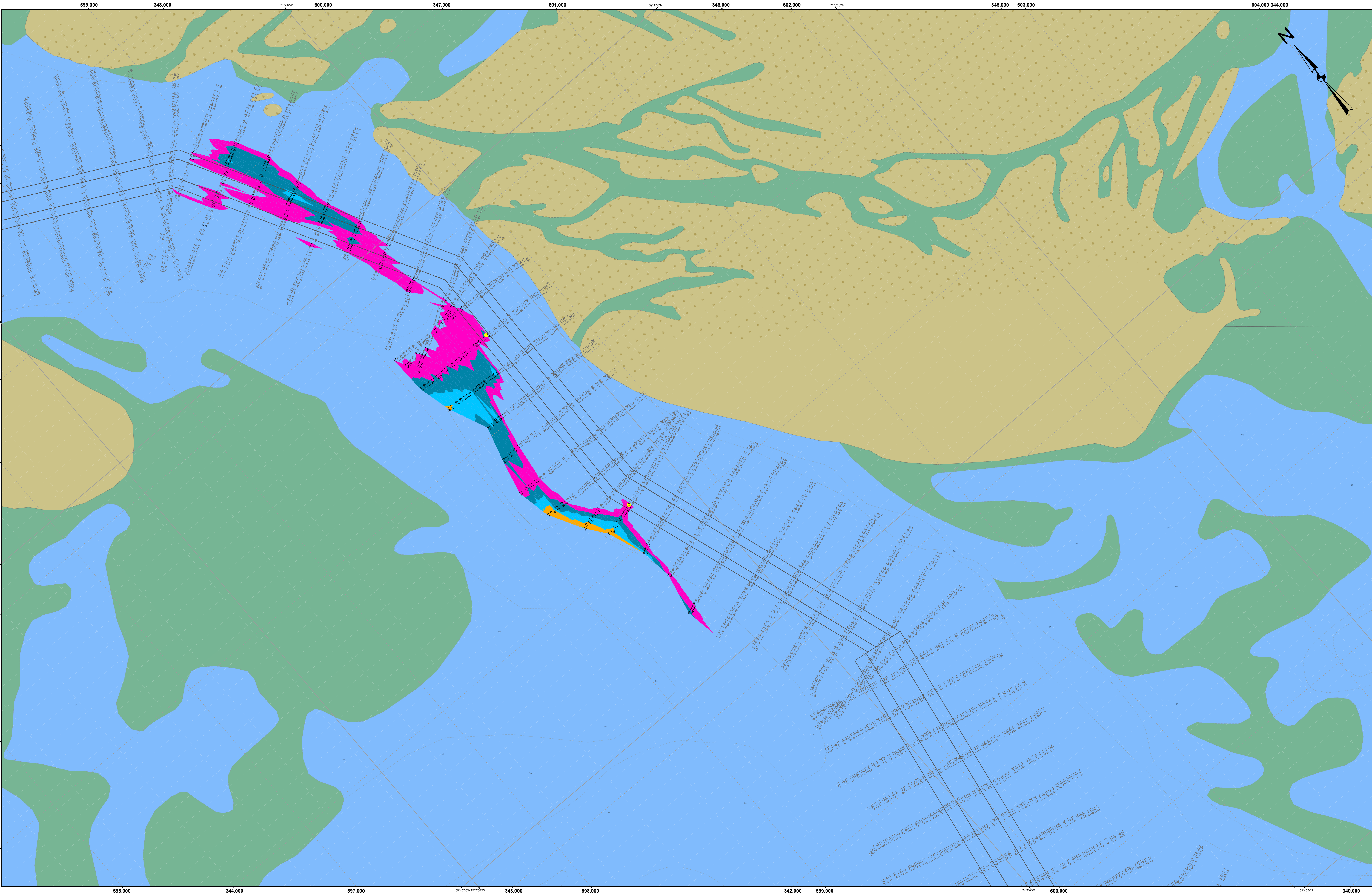
BASE MAPPING LINEWORK OR ORTHOPHOTOGRAPHY HAS BEEN COMPILED FROM A VARIETY OF SOURCES AND DATES AND IS INTENDED TO PORTRAY GENERAL CHARACTERISTICS OF THE SHORELINE AND OTHER FEATURES. TEMPORAL CHANGES MAY HAVE OCCURRED SINCE THIS DATA SET WAS COLLECTED AND SOME PARTS OF THE DATA MAY NO LONGER BE AN ACCURATE REPRESENTATION OF THE SURFACE CONDITIONS.



### Legend

- |   |                      |        |
|---|----------------------|--------|
|  | Green Buoy           | 8 - 70 |
|  | Red Buoy             | 7 - 8  |
|   | Shoalest             | 6 - 7  |
|  | Sounding per Quarter | 5 - 6  |
|   |                      | 4 - 5  |
|  | Channel Framework    | 3 - 4  |
|   |                      | 0 - 3  |





THIS SURVEY MEETS STANDARDS AS OUTLINED IN CORPS OF ENGINEERS' HYDROGRAPHIC SURVEY MANUAL EM1110-2-1003, DATED NOVEMBER 30, 2013 FOR NAVIGATION AND DREDGING SUPPORT SURVEYS.

HORIZONTAL REFERENCE - NAD 83, NEW JERSEY STATE PLANE, ZONE 2900, U.S. FOOT.

VERTICAL REFERENCE - MEAN LOWER LOW WATER, WHICH IS 0.36' BELOW N.A.V.D. 88.

GEOID 18 AND NOAA TIDAL EPOCH: 1983 - 2001 WERE USED. SOUNDINGS ARE EXPRESSED IN FEET AND TENTHS AND REFER TO MEAN LOWER LOW WATER.

HYPACK, INC. SOFTWARE WAS USED TO PERFORM THE SOUNDING SELECTION AND CONTOUR GENERATION.

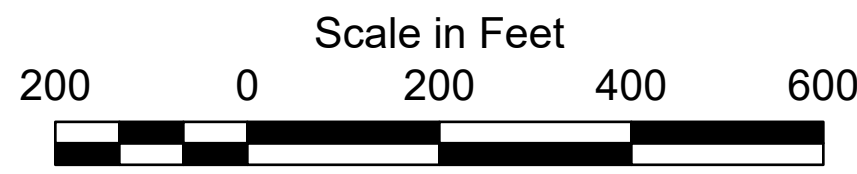
THE INFORMATION DEPICTED ON THIS MAP REPRESENT THE RESULTS OF SURVEYS MADE ON THE DATES INDICATED AND CAN ONLY BE CONSIDERED AS INDICATING THE GENERAL CONDITIONS EXISTING AT THAT TIME.

THE POSITIONS OF THE AIDS TO NAVIGATION ARE PROVIDED FOR INFORMATION ONLY, AND SHOULD NOT BE USED FOR NAVIGATION.

THE LIMITS OF THE FEDERAL CHANNEL DEPICT THE MOST CURRENT CHANNEL FRAMEWORK AVAILABLE WHICH CAN ALSO BE DOWNLOADED HERE:

<http://navigation.usace.army.mil/Survey/Framework>

BASE MAPPING LINEWORK OR ORTHOPHOTOGRAPHY HAS BEEN COMPILED FROM A VARIETY OF SOURCES AND DATES AND IS INTENDED TO PORTRAY GENERAL CHARACTERISTICS OF THE SHORELINE AND OTHER FEATURES. TEMPORAL CHANGES MAY HAVE OCCURRED SINCE THIS DATA SET WAS COLLECTED AND SOME PARTS OF THE DATA MAY NO LONGER BE AN ACCURATE REPRESENTATION OF THE SURFACE CONDITIONS.



- Legend**
- Green Buoy
  - Red Buoy
  - Shoalest
  - Sounding per Quarter
  - Channel Framework
- |        |       |
|--------|-------|
| 8 - 70 | 7 - 8 |
| 6 - 7  | 5 - 6 |
| 4 - 5  | 3 - 4 |
| 0 - 3  |       |



BI to BI 30 -- 16 DEC 24  
BI 30 to BI 19 -- 09 DEC 24  
BI 19 to BI 14 -- 10 DEC 24

DISCLAIMER: This data is provided for general information only. It is not intended for use in any project or project, including but not limited to, navigation, dredging, or other engineering purposes. The data is provided as is, without warranty of any kind, express or implied. The user assumes all responsibility for the use of the data. The data is provided for informational purposes only and should not be used for navigation or other engineering purposes. The data is provided for informational purposes only and should not be used for navigation or other engineering purposes.

Surveyed By:	PHILADELPHIA DISTRICT
Checked By:	E. Anthony
Drawn By:	E. Anthony
Approved:	Chief, Survey Station

**BARNEGAT INLET, NEW JERSEY OYSTER CREEK CHANNEL EXAMINATION**

E-BI-27



