

THIS SURVEY MEETS STANDARDS AS OUTLINED IN CORPS OF ENGINEERS' HYDROGRAPHIC SURVEY MANUAL EM1110-2-1003, DATED NOVEMBER 30, 2013 FOR NAVIGATION AND DREDGING SUPPORT SURVEYS.

HORIZONTAL REFERENCE - NAD 83, NEW JERSEY STATE PLANE, ZONE 2900, U.S. FOOT.

VERTICAL REFERENCE - MEAN LOWER LOW WATER, WHICH IS 1.69' BELOW N.A.V.D. 88.

NOAA TIDAL EPOCH: 1983 - 2001 WERE USED. SOUNDINGS ARE EXPRESSED IN FEET AND TENTHS AND REFER TO MEAN LOWER LOW WATER.

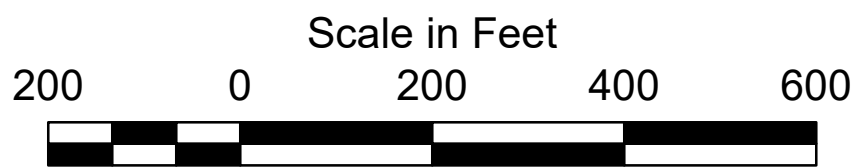
HYPACK, INC. SOFTWARE WAS USED TO PERFORM THE SOUNDING SELECTION AND CONTOUR GENERATION.

THE INFORMATION DEPICTED ON THIS MAP REPRESENT THE RESULTS OF SURVEYS MADE ON THE DATES INDICATED AND CAN ONLY BE CONSIDERED AS INDICATING THE GENERAL CONDITIONS EXISTING AT THAT TIME.

THE POSITIONS OF THE AIDS TO NAVIGATION ARE PROVIDED FOR INFORMATION ONLY, AND SHOULD NOT BE USED FOR NAVIGATION.

THE LIMITS OF THE FEDERAL CHANNEL DEPICT THE MOST CURRENT CHANNEL FRAMEWORK AVAILABLE WHICH CAN ALSO BE DOWNLOADED HERE:
<http://navigation.usace.army.mil/Survey/Framework>

BASE MAPPING LINEWORK OR ORTHOPHOTOGRAPHY HAS BEEN COMPILED FROM A VARIETY OF SOURCES AND DATES AND IS INTENDED TO PORTRAY GENERAL CHARACTERISTICS OF THE SHORELINE AND OTHER FEATURES. TEMPORAL CHANGES MAY HAVE OCCURRED SINCE THIS DATA SET WAS COLLECTED AND SOME PARTS OF THE DATA MAY NO LONGER BE AN ACCURATE REPRESENTATION OF THE SURFACE CONDITIONS.



- Legend**
- Shoalest Sounding per Quarter
 - 3' Curve of Depth
 - 5' Curve of Depth
 - 6' Curve of Depth
 - ToeLine



DISCLAIMER: This data is provided for general information only. It is not intended for use in navigation. The government makes no representation or warranty, expressed or implied, including but not limited to, accuracy, completeness, or reliability. The data is provided "as is" and the user assumes all responsibility for its use. The government makes no warranty, guarantee, or representation of any kind, including but not limited to, accuracy, completeness, or reliability. The data is provided "as is" and the user assumes all responsibility for its use.

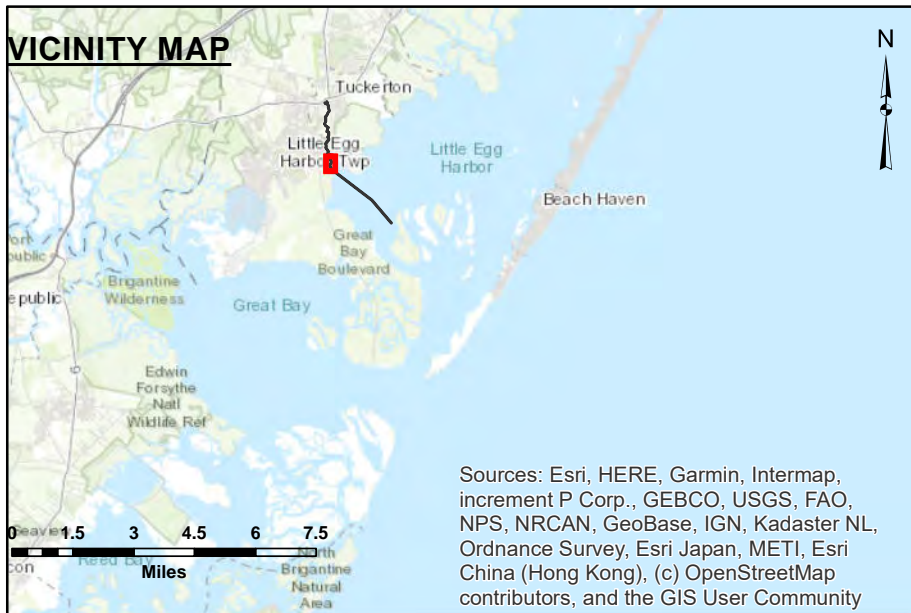
U.S. ARMY CORPS OF ENGINEERS PHILADELPHIA DISTRICT		Surveyed By:
Drawing No:		Plotted By:
Field Scale:		E. Anthony
Approved:	Chief, Survey Station	Checked By:

TUCKERTON CREEK

21 & 23 JUNE 2023

EXAMINATION

E-TC-02



THIS SURVEY MEETS STANDARDS AS OUTLINED IN CORPS OF ENGINEERS' HYDROGRAPHIC SURVEY MANUAL EM1110-2-1003, DATED NOVEMBER 30, 2013 FOR NAVIGATION AND DREDGING SUPPORT SURVEYS.

HORIZONTAL REFERENCE - NAD 83, NEW JERSEY STATE PLANE, ZONE 2900, U.S. FOOT.

VERTICAL REFERENCE - MEAN LOWER LOW WATER, WHICH IS 1.69' BELOW N.A.V.D. 88.

NOAA TIDAL EPOCH: 1983 - 2001 WERE USED. SOUNDINGS ARE EXPRESSED IN FEET AND TENTHS AND REFER TO MEAN LOWER LOW WATER.

HYPACK, INC. SOFTWARE WAS USED TO PERFORM THE SOUNDING SELECTION AND CONTOUR GENERATION.

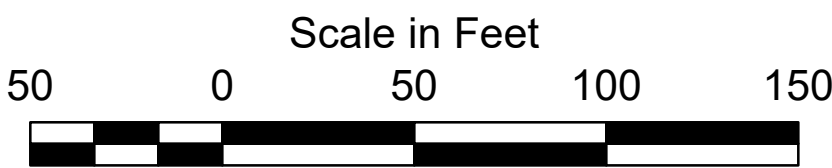
THE INFORMATION DEPICTED ON THIS MAP REPRESENT THE RESULTS OF SURVEYS MADE ON THE DATES INDICATED AND CAN ONLY BE CONSIDERED AS INDICATING THE GENERAL CONDITIONS EXISTING AT THAT TIME.

THE POSITIONS OF THE AIDS TO NAVIGATION ARE PROVIDED FOR INFORMATION ONLY, AND SHOULD NOT BE USED FOR NAVIGATION.

THE LIMITS OF THE FEDERAL CHANNEL DEPICT THE MOST CURRENT CHANNEL FRAMEWORK AVAILABLE WHICH CAN ALSO BE DOWNLOADED HERE:

<http://navigation.usace.army.mil/Survey/Framework>

BASE MAPPING LINEWORK OR ORTHOPHOTOGRAPHY HAS BEEN COMPILED FROM A VARIETY OF SOURCES AND DATES AND IS INTENDED TO PORTRAY GENERAL CHARACTERISTICS OF THE SHORELINE AND OTHER FEATURES. TEMPORAL CHANGES MAY HAVE OCCURRED SINCE THIS DATA SET WAS COLLECTED AND SOME PARTS OF THE DATA MAY NO LONGER BE AN ACCURATE REPRESENTATION OF THE SURFACE CONDITIONS.



- Legend**
- Shoalest Sounding per Quarter
 - 3' Curve of Depth
 - 5' Curve of Depth
 - 6' Curve of Depth
 - ToeLine

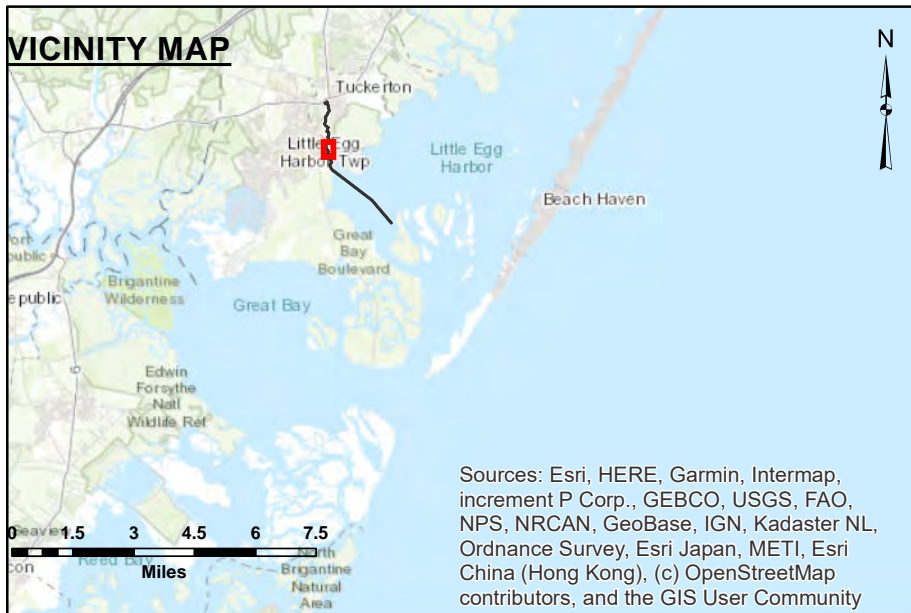


DISCLAIMER: This data is provided for general information only. It is not intended to be used for navigation or other purposes. The data is provided as is, without warranty. The user assumes all liability for any use of the data. The data is not to be used for navigation or other purposes. The data is provided as is, without warranty. The user assumes all liability for any use of the data.

U.S. ARMY CORPS OF ENGINEERS PHILADELPHIA DISTRICT	
Drawing No.	Surveyed By
Sheet No.	Plotted By
Scale	E. Anthony
Approved:	Checked By
Chief, Survey Station	

TUCKERTON CREEK
21 & 23 JUNE 2023
EXAMINATION

E-TC-02



THIS SURVEY MEETS STANDARDS AS OUTLINED IN CORPS OF ENGINEERS' HYDROGRAPHIC SURVEY MANUAL EM1110-2-1003, DATED NOVEMBER 30, 2013 FOR NAVIGATION AND DREDGING SUPPORT SURVEYS.

HORIZONTAL REFERENCE - NAD 83, NEW JERSEY STATE PLANE, ZONE 2900, U.S. FOOT.

VERTICAL REFERENCE - MEAN LOWER LOW WATER, WHICH IS 1.69' BELOW N.A.V.D. 88.

NOAA TIDAL EPOCH: 1983 - 2001 WERE USED. SOUNDINGS ARE EXPRESSED IN FEET AND TENTHS AND REFER TO MEAN LOWER LOW WATER.

HYPACK, INC. SOFTWARE WAS USED TO PERFORM THE SOUNDING SELECTION AND CONTOUR GENERATION.

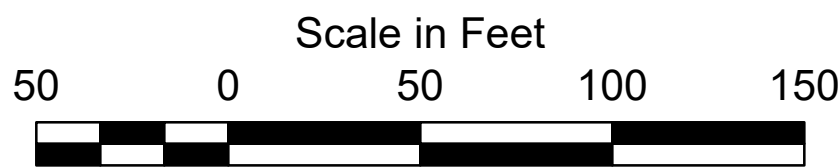
THE INFORMATION DEPICTED ON THIS MAP REPRESENT THE RESULTS OF SURVEYS MADE ON THE DATES INDICATED AND CAN ONLY BE CONSIDERED AS INDICATING THE GENERAL CONDITIONS EXISTING AT THAT TIME.

THE POSITIONS OF THE AIDS TO NAVIGATION ARE PROVIDED FOR INFORMATION ONLY, AND SHOULD NOT BE USED FOR NAVIGATION.

THE LIMITS OF THE FEDERAL CHANNEL DEPICT THE MOST CURRENT CHANNEL FRAMEWORK AVAILABLE WHICH CAN ALSO BE DOWNLOADED HERE:

<http://navigation.usace.army.mil/Survey/Framework>

BASE MAPPING LINEWORK OR ORTHOPHOTOGRAPHY HAS BEEN COMPILED FROM A VARIETY OF SOURCES AND DATES AND IS INTENDED TO PORTRAY GENERAL CHARACTERISTICS OF THE SHORELINE AND OTHER FEATURES. TEMPORAL CHANGES MAY HAVE OCCURRED SINCE THIS DATA SET WAS COLLECTED AND SOME PARTS OF THE DATA MAY NO LONGER BE AN ACCURATE REPRESENTATION OF THE SURFACE CONDITIONS.



- Legend**
- Shoalest Sounding per Quarter
 - 3' Curve of Depth
 - 5' Curve of Depth
 - 6' Curve of Depth
 - ToeLine



DISCLAIMER: This data is provided for general information only. It is not intended for use in navigation. The data is not a representation of a warranty, and the Corps of Engineers does not make any representation or warranty of accuracy, completeness, or timeliness of the data provided. The data is provided as is, without any representation or warranty of accuracy, completeness, or timeliness of the data provided. The data is provided as is, without any representation or warranty of accuracy, completeness, or timeliness of the data provided. The data is provided as is, without any representation or warranty of accuracy, completeness, or timeliness of the data provided.

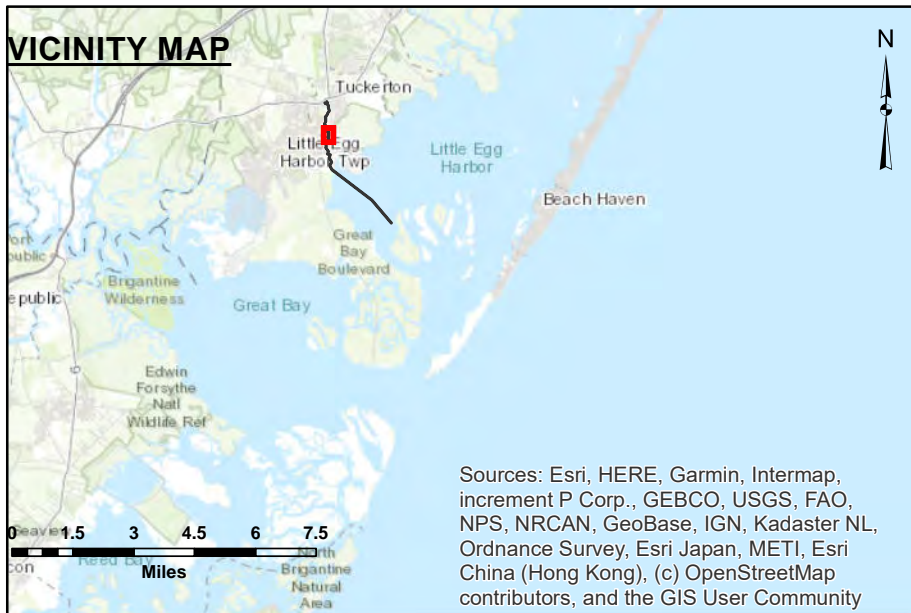
Surveyed By:	Surveyed By:
Drawn By:	Drawn By:
Field Scale:	Field Scale:
Approved:	Approved:
Chief, Survey Station	Chief, Survey Station

TUCKERTON CREEK

21 & 23 JUNE 2023

EXAMINATION

E-TC-02



THIS SURVEY MEETS STANDARDS AS OUTLINED IN CORPS OF ENGINEERS' HYDROGRAPHIC SURVEY MANUAL EM1110-2-1003, DATED NOVEMBER 30, 2013 FOR NAVIGATION AND DREDGING SUPPORT SURVEYS.

HORIZONTAL REFERENCE - NAD 83, NEW JERSEY STATE PLANE, ZONE 2900, U.S. FOOT.

VERTICAL REFERENCE - MEAN LOWER LOW WATER, WHICH IS 1.69' BELOW N.A.V.D. 88.

NOAA TIDAL EPOCH: 1983 - 2001 WERE USED. SOUNDINGS ARE EXPRESSED IN FEET AND TENTHS AND REFER TO MEAN LOWER LOW WATER.

HYPACK, INC. SOFTWARE WAS USED TO PERFORM THE SOUNDING SELECTION AND CONTOUR GENERATION.

THE INFORMATION DEPICTED ON THIS MAP REPRESENT THE RESULTS OF SURVEYS MADE ON THE DATES INDICATED AND CAN ONLY BE CONSIDERED AS INDICATING THE GENERAL CONDITIONS EXISTING AT THAT TIME.

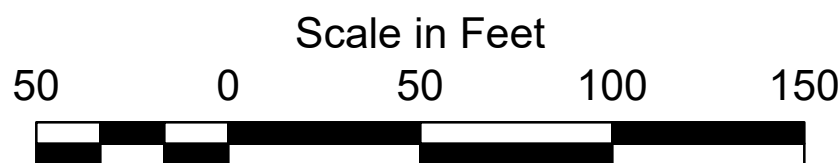
THE POSITIONS OF THE AIDS TO NAVIGATION ARE PROVIDED FOR INFORMATION ONLY, AND SHOULD NOT BE USED FOR NAVIGATION.

THE LIMITS OF THE FEDERAL CHANNEL DEPICT THE MOST CURRENT CHANNEL FRAMEWORK AVAILABLE WHICH CAN ALSO BE DOWNLOADED HERE:

<http://navigation.usace.army.mil/Survey/Framework>

BASE MAPPING LINEWORK OR ORTHOPHOTOGRAPHY HAS BEEN COMPILED FROM A VARIETY OF SOURCES AND DATES AND IS INTENDED TO PORTRAY GENERAL CHARACTERISTICS OF THE SHORELINE AND OTHER FEATURES.

TEMPORAL CHANGES MAY HAVE OCCURRED SINCE THIS DATA SET WAS COLLECTED AND SOME PARTS OF THE DATA MAY NO LONGER BE AN ACCURATE REPRESENTATION OF THE SURFACE CONDITIONS.



- Legend**
- Shoalest Sounding per Quarter
 - 3' Curve of Depth
 - 5' Curve of Depth
 - 6' Curve of Depth
 - ToeLine

US Army Corps of Engineers
Philadelphia District

DISCLAIMER

This data is provided for general information only. It is not intended for use in navigation. The data is provided as is, without warranty. The user assumes all responsibility for the use of the data. The data is not to be used for any purpose other than that for which it was collected. The data is not to be used for any purpose other than that for which it was collected. The data is not to be used for any purpose other than that for which it was collected.

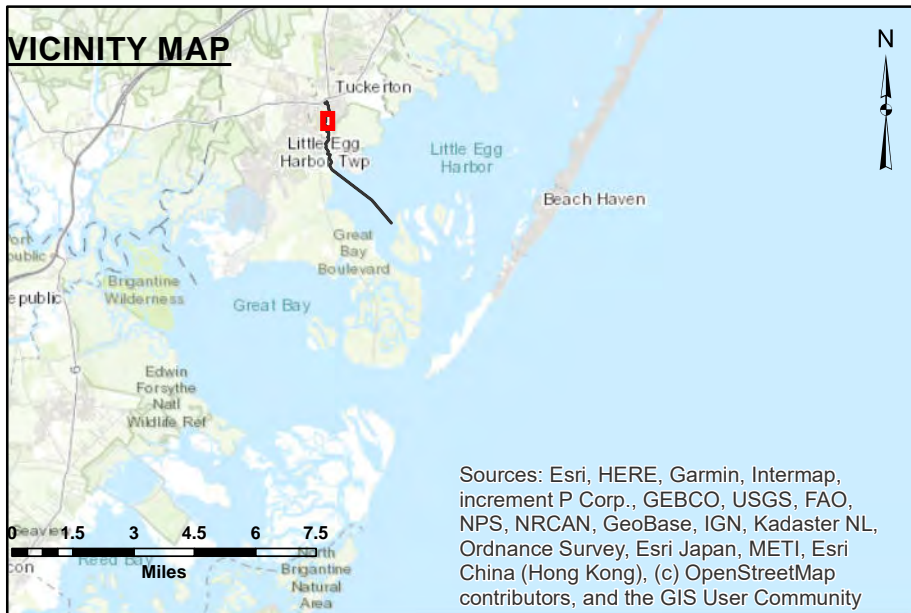
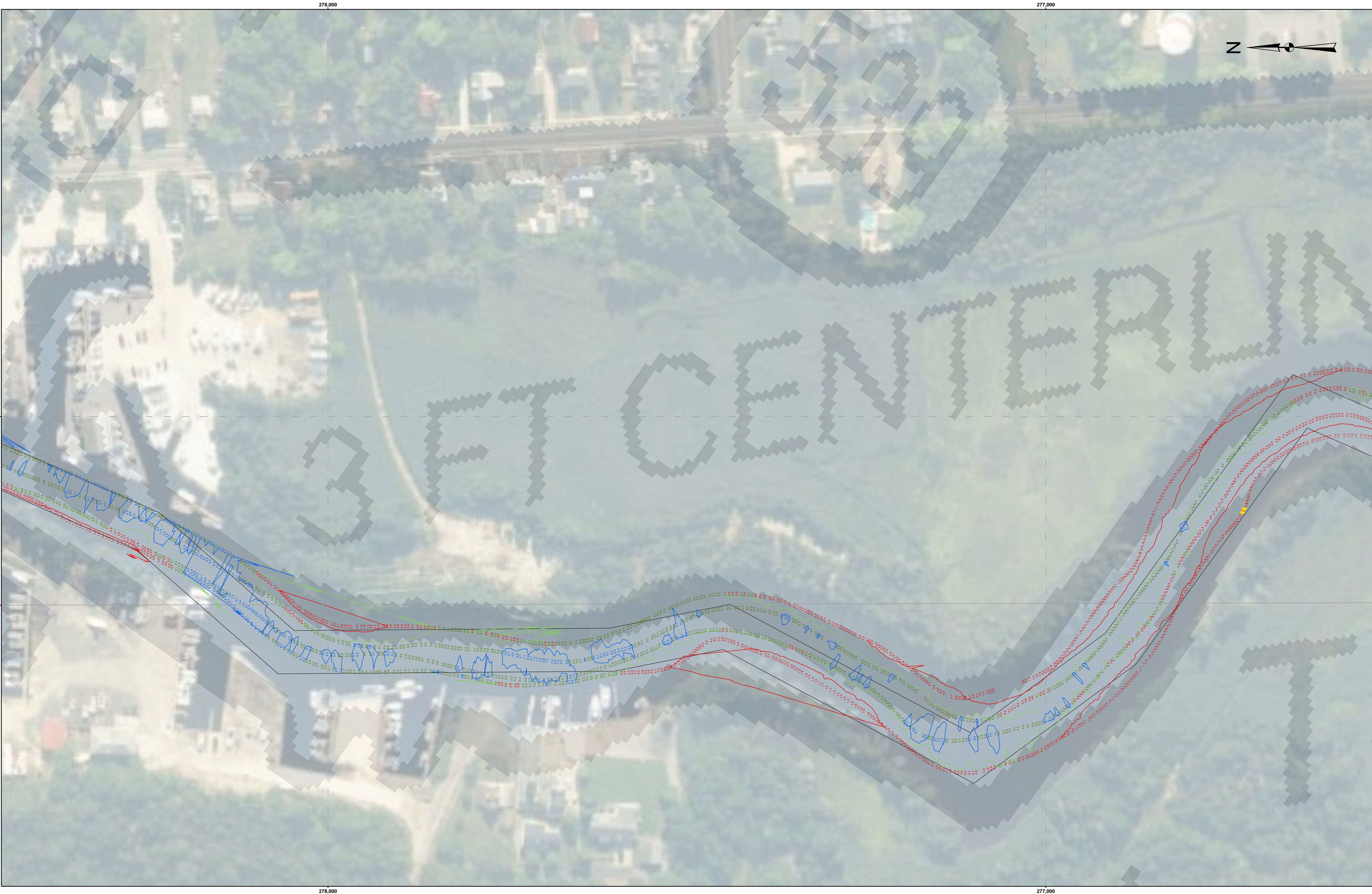
Surveyed By:	Surveyed By:
Checked By:	Checked By:
Drawn By:	Drawn By:
Field Scale:	Field Scale:
Approved:	Approved:
Chief, Survey Station	Chief, Survey Station

TUCKERTON CREEK

21 & 23 JUNE 2023

EXAMINATION

E-TC-02



THIS SURVEY MEETS STANDARDS AS OUTLINED IN CORPS OF ENGINEERS' HYDROGRAPHIC SURVEY MANUAL EM1110-2-1003, DATED NOVEMBER 30, 2013 FOR NAVIGATION AND DREDGING SUPPORT SURVEYS.

HORIZONTAL REFERENCE - NAD 83, NEW JERSEY STATE PLANE, ZONE 2900, U.S. FOOT.

VERTICAL REFERENCE - MEAN LOWER LOW WATER, WHICH IS 1.69' BELOW N.A.V.D. 88.

NOAA TIDAL EPOCH: 1983 - 2001 WERE USED. SOUNDINGS ARE EXPRESSED IN FEET AND TENTHS AND REFER TO MEAN LOWER LOW WATER.

HYPACK, INC. SOFTWARE WAS USED TO PERFORM THE SOUNDING SELECTION AND CONTOUR GENERATION.

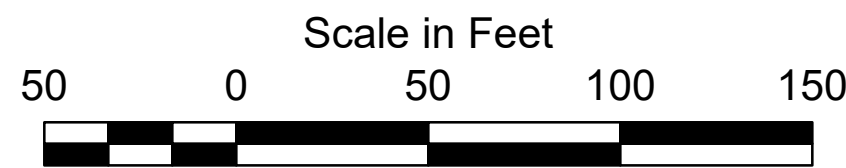
THE INFORMATION DEPICTED ON THIS MAP REPRESENT THE RESULTS OF SURVEYS MADE ON THE DATES INDICATED AND CAN ONLY BE CONSIDERED AS INDICATING THE GENERAL CONDITIONS EXISTING AT THAT TIME.

THE POSITIONS OF THE AIDS TO NAVIGATION ARE PROVIDED FOR INFORMATION ONLY, AND SHOULD NOT BE USED FOR NAVIGATION.

THE LIMITS OF THE FEDERAL CHANNEL DEPICT THE MOST CURRENT CHANNEL FRAMEWORK AVAILABLE WHICH CAN ALSO BE DOWNLOADED HERE:

<http://navigation.usace.army.mil/Survey/Framework>

BASE MAPPING LINEWORK OR ORTHOPHOTOGRAPHY HAS BEEN COMPILED FROM A VARIETY OF SOURCES AND DATES AND IS INTENDED TO PORTRAY GENERAL CHARACTERISTICS OF THE SHORELINE AND OTHER FEATURES. TEMPORAL CHANGES MAY HAVE OCCURRED SINCE THIS DATA SET WAS COLLECTED AND SOME PARTS OF THE DATA MAY NO LONGER BE AN ACCURATE REPRESENTATION OF THE SURFACE CONDITIONS.



Legend

- Shoalest Sounding per Quarter
- 3' Curve of Depth
- 5' Curve of Depth
- 6' Curve of Depth
- ToeLine



THE MATERIALS ARE PROVIDED "AS IS." THE GOVERNMENT MAKES NO REPRESENTATIONS OR WARRANTIES, EXPRESSED OR IMPLIED, INCLUDING BUT NOT LIMITED TO, THE ACCURACY, COMPLETENESS, OR FITNESS FOR A PARTICULAR PURPOSE, OR THAT THE INFORMATION CONTAINED HEREIN WILL BE ACCURATE, COMPLETE, OR UP-TO-DATE. THE GOVERNMENT MAKES NO WARRANTIES, GUARANTEES, OR REPRESENTATIONS OF ANY KIND, INCLUDING BUT NOT LIMITED TO, THE ACCURACY, COMPLETENESS, OR FITNESS FOR A PARTICULAR PURPOSE, OR THAT THE INFORMATION CONTAINED HEREIN WILL BE ACCURATE, COMPLETE, OR UP-TO-DATE. THE GOVERNMENT MAKES NO WARRANTIES, GUARANTEES, OR REPRESENTATIONS OF ANY KIND, INCLUDING BUT NOT LIMITED TO, THE ACCURACY, COMPLETENESS, OR FITNESS FOR A PARTICULAR PURPOSE, OR THAT THE INFORMATION CONTAINED HEREIN WILL BE ACCURATE, COMPLETE, OR UP-TO-DATE.

Surveyed By:	U.S. ARMY CORPS OF ENGINEERS PHILADELPHIA DISTRICT
Drawn By:	
Field Scale:	
Approved:	Chief, Survey Station
Plotted By:	E. Anthony
Checked By:	

TUCKERTON CREEK
21 & 23 JUNE 2023
EXAMINATION

E-TC-02

