

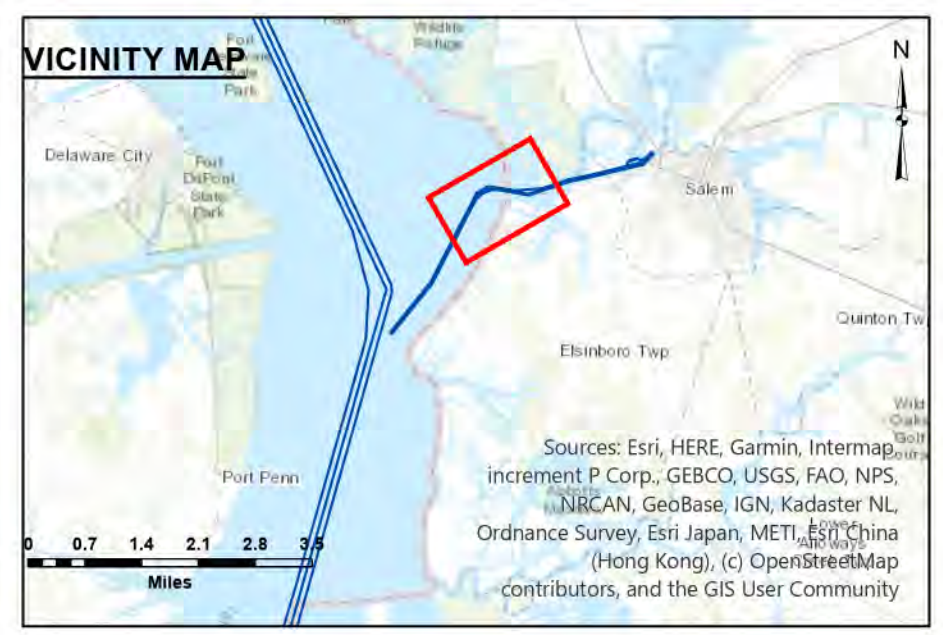
STA. 3+000 to STA. 7+200 -- 12 NOV 24  
 STA. 7+200 to STA. 13+400 -- 13 NOV 24  
 STA. 13+400 to STA. 14+700 -- 12 NOV 24  
 STA. 14+700 to STA. 19+900 -- 13 NOV 24  
 STA. 19+900 to STA. 25+778 -- 20 NOV 24

DISCLAIMER: This data is provided for general information only. It is not intended for use in navigation. The user assumes all liability for the use of this data. The government disclaims any liability for the use of this data, including any damages, whether direct or indirect, resulting from the use of this data.

Drawn by	Surveyed by
Checked by	U.S. ARMY CORPS OF ENGINEERS PHILADELPHIA DISTRICT
Field Scale	Plotted By
Approved	E. Authority
	Checked By
	Chief, Survey Station

**SALEM RIVER**  
**STA. 0+000 to STA. 25+783**  
**EXAMINATION**

E-SA-10

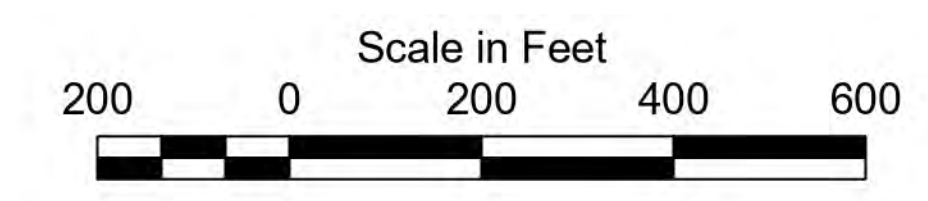


1. THIS SURVEY MEETS STANDARDS AS OUTLINED IN CORPS OF ENGINEERS' HYDROGRAPHIC SURVEY MANUAL EM1110-2-1003, DATED NOVEMBER 30, 2013 FOR NAVIGATION AND DREDGING SUPPORT SURVEYS.
2. HORIZONTAL REFERENCE - NAD 83, NEW JERSEY STATE PLANE, ZONE 2900, U.S. FOOT.
3. VERTICAL REFERENCE - MEAN LOWER LOW WATER, WHICH IS 2.97' BELOW N.A.V.D. 88.
4. GEOID 12B AND NOAA TIDAL EPOCH: 1983 - 2001 WERE USED. SOUNDINGS ARE EXPRESSED IN FEET AND TENTHS AND REFER TO MEAN LOWER LOW WATER.

5. HYPACK, INC. SOFTWARE WAS USED TO PERFORM THE SOUNDING SELECTION AND CONTOUR GENERATION.
6. THE INFORMATION DEPICTED ON THIS MAP REPRESENT THE RESULTS OF SURVEYS MADE ON THE DATES INDICATED AND CAN ONLY BE CONSIDERED AS INDICATING THE GENERAL CONDITIONS EXISTING AT THAT TIME.

7. THE POSITIONS OF THE AIDS TO NAVIGATION ARE PROVIDED FOR INFORMATION ONLY, AND SHOULD NOT BE USED FOR NAVIGATION.
8. THE LIMITS OF THE FEDERAL CHANNEL DEPICT THE MOST CURRENT CHANNEL FRAMEWORK AVAILABLE WHICH CAN ALSO BE DOWNLOADED HERE:  
<http://navigation.usace.army.mil/Survey/Framework>

9. BASE MAPPING LINEWORK OR ORTHOPHOTOGRAPHY HAS BEEN COMPILED FROM A VARIETY OF SOURCES AND DATES AND IS INTENDED TO PORTRAY GENERAL CHARACTERISTICS OF THE SHORELINE AND OTHER FEATURES. TEMPORAL CHANGES MAY HAVE OCCURRED SINCE THIS DATA SET WAS COLLECTED AND SOME PARTS OF THE DATA MAY NO LONGER BE AN ACCURATE REPRESENTATION OF THE SURFACE CONDITIONS.



- Shoalest Sounding per Quarter
- CenterLine
- ToeLine
- StationLine
- 16 - 59.91
- 15 - 16
- 14 - 15
- 13 - 14
- 12 - 13
- 11 - 12
- 4.1 - 11

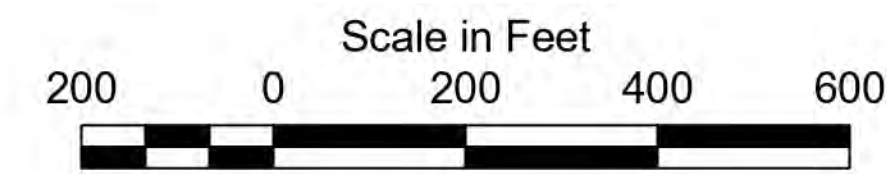


1. THIS SURVEY MEETS STANDARDS AS OUTLINED IN CORPS OF ENGINEERS' HYDROGRAPHIC SURVEY MANUAL EM1110-2-1003, DATED NOVEMBER 30, 2013 FOR NAVIGATION AND DREDGING SUPPORT SURVEYS.
2. HORIZONTAL REFERENCE - NAD 83, NEW JERSEY STATE PLANE, ZONE 2900, U.S. FOOT.
3. VERTICAL REFERENCE - MEAN LOWER LOW WATER, WHICH IS 2.97' BELOW N.A.V.D. 88.
4. GEOID 12B AND NOAA TIDAL EPOCH: 1983 - 2001 WERE USED. SOUNDINGS ARE EXPRESSED IN FEET AND TENTHS AND REFER TO MEAN LOWER LOW WATER.

5. HYPACK, INC. SOFTWARE WAS USED TO PERFORM THE SOUNDING SELECTION AND CONTOUR GENERATION.
6. THE INFORMATION DEPICTED ON THIS MAP REPRESENT THE RESULTS OF SURVEYS MADE ON THE DATES INDICATED AND CAN ONLY BE CONSIDERED AS INDICATING THE GENERAL CONDITIONS EXISTING AT THAT TIME.

7. THE POSITIONS OF THE AIDS TO NAVIGATION ARE PROVIDED FOR INFORMATION ONLY, AND SHOULD NOT BE USED FOR NAVIGATION.
8. THE LIMITS OF THE FEDERAL CHANNEL DEPICT THE MOST CURRENT CHANNEL FRAMEWORK AVAILABLE WHICH CAN ALSO BE DOWNLOADED HERE:  
<http://navigation.usace.army.mil/Survey/Framework>

9. BASE MAPPING LINEWORK OR ORTHOPHOTOGRAPHY HAS BEEN COMPILED FROM A VARIETY OF SOURCES AND DATES AND IS INTENDED TO PORTRAY GENERAL CHARACTERISTICS OF THE SHORELINE AND OTHER FEATURES. TEMPORAL CHANGES MAY HAVE OCCURRED SINCE THIS DATA SET WAS COLLECTED AND SOME PARTS OF THE DATA MAY NO LONGER BE AN ACCURATE REPRESENTATION OF THE SURFACE CONDITIONS.



- Shoalest Sounding per Quarter
- CenterLine
- ToeLine
- StationLine
- 16 - 59.91
- 15 - 16
- 14 - 15
- 13 - 14
- 12 - 13
- 11 - 12
- 4.1 - 11



STA. 3+000 to STA. 7+200 -- 12 NOV 24  
 STA. 7+200 to STA. 13+400 -- 13 NOV 24  
 STA. 13+400 to STA. 14+700 -- 12 NOV 24  
 STA. 14+700 to STA. 19+900 -- 13 NOV 24  
 STA. 19+900 to STA. 25+778 -- 20 NOV 24

DISCLAIMER: This data is provided for general information only. It is not intended for use in navigation. The government disclaims any liability for the use of this data for any purpose other than that for which it was collected. The government disclaims any liability for the use of this data for any purpose other than that for which it was collected. The government disclaims any liability for the use of this data for any purpose other than that for which it was collected.

Surveyed by: \_\_\_\_\_  
 Checked by: \_\_\_\_\_  
 Plotted by: \_\_\_\_\_  
 E. Authority: \_\_\_\_\_  
 Approved: \_\_\_\_\_  
 Chief, Survey's Section

**SALEM RIVER**  
**STA. 0+000 to STA. 25+783**  
**EXAMINATION**

E-SA-10