

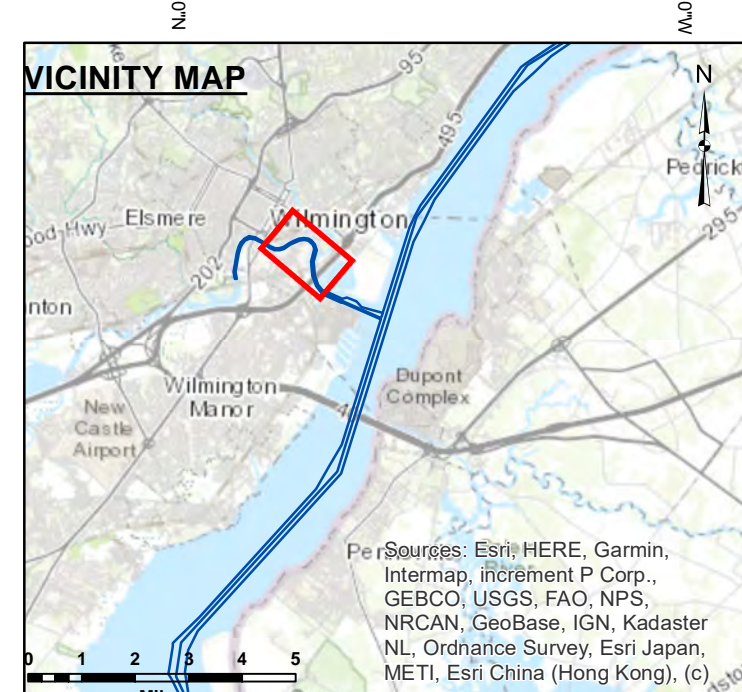
STA. 0+000 to 10+500 -- 09 APR 24  
 STA. 10+500 to 16+829 -- 10 APR 24

**DISCLAIMER**  
 While data is provided for general information only, it is not intended for use in any design or construction project. The government disclaims any liability for the use of this information, and shall not be held responsible for any damages, including consequential, arising from its use. The government disclaims any liability for the use of this information, and shall not be held responsible for any damages, including consequential, arising from its use.

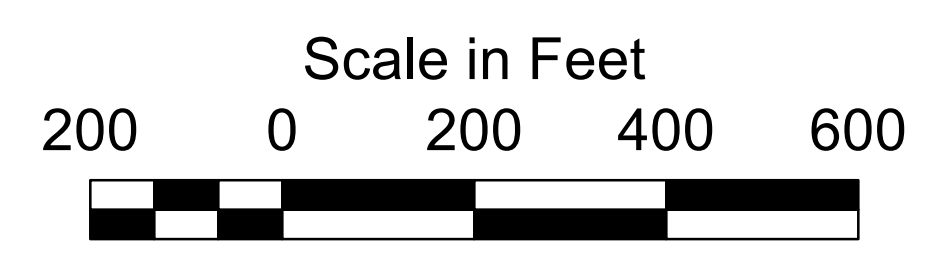
U.S. ARMY CORPS OF ENGINEERS  
 PHILADELPHIA DISTRICT  
 Surveyed By: \_\_\_\_\_  
 Plotted By: \_\_\_\_\_  
 Checked By: \_\_\_\_\_  
 Approved: \_\_\_\_\_  
 Chief Survey Section

CHRISTINA RIVER, DELAWARE  
 EXAMINATION  
 STA. 0+000 to STA. 16+844.37

E-CR-03

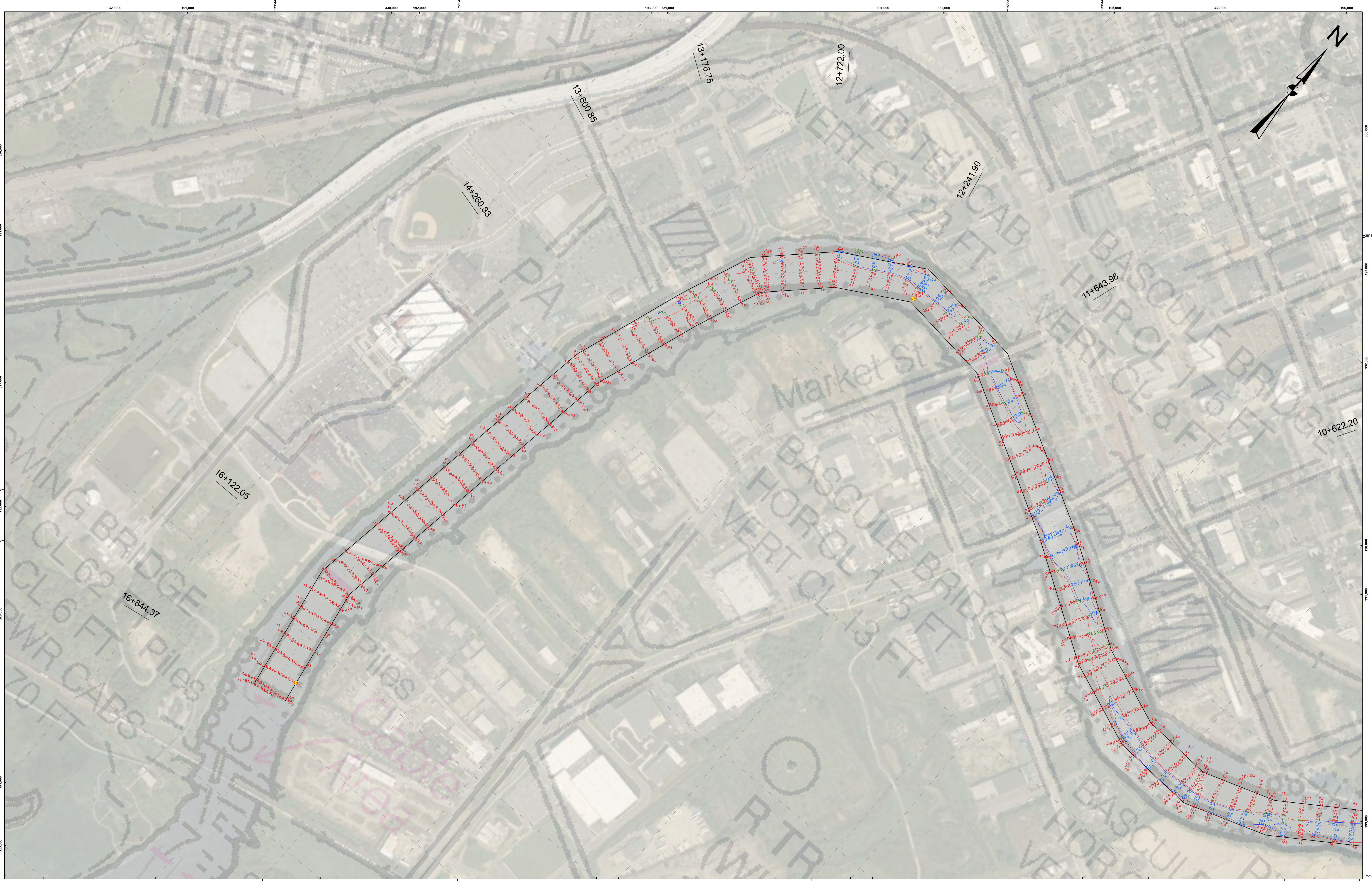


- THIS SURVEY MEETS STANDARDS AS OUTLINED IN CORPS OF ENGINEERS' HYDROGRAPHIC SURVEY MANUAL EM1110-2-1003, DATED NOVEMBER 30, 2013 FOR NAVIGATION AND DREDGING SUPPORT SURVEYS.
- HORIZONTAL REFERENCE - NAD 83, NEW JERSEY STATE PLANE, ZONE 2900, U.S. FOOT.
- VERTICAL REFERENCE - MEAN LOWER LOW WATER, WHICH IS 2.98' BELOW N.A.V.D. 88.
- GEOID 12B AND NOAA TIDAL EPOCH: 1983 - 2001 WERE USED. SOUNDINGS ARE EXPRESSED IN FEET AND TENTHS AND REFER TO MEAN LOWER LOW WATER.
- CONTOURS WERE GENERATED USING THE MINIMUM DEPTH WITHIN SEARCH RADIUS OF 18'.
- HYPACK, INC. SOFTWARE WAS USED TO PERFORM THE SOUNDING SELECTION AND CONTOUR GENERATION.
- THE INFORMATION DEPICTED ON THIS MAP REPRESENT THE RESULTS OF SURVEYS MADE ON THE DATES INDICATED AND CAN ONLY BE CONSIDERED AS INDICATING THE GENERAL CONDITIONS EXISTING AT THAT TIME.
- THE POSITIONS OF THE AIDS TO NAVIGATION ARE PROVIDED FOR INFORMATION ONLY, AND SHOULD NOT BE USED FOR NAVIGATION.
- THE LIMITS OF THE FEDERAL CHANNEL DEPICT THE MOST CURRENT CHANNEL FRAMEWORK AVAILABLE WHICH CAN ALSO BE DOWNLOADED HERE:  
<http://navigation.usace.army.mil/Survey/Framework>
- BASE MAPPING LINEWORK OR ORTHOPHOTOGRAPHY HAS BEEN COMPILED FROM A VARIETY OF SOURCES AND DATES AND IS INTENDED TO PORTRAY GENERAL CHARACTERISTICS OF THE SHORELINE AND OTHER FEATURES. TEMPORAL CHANGES MAY HAVE OCCURRED SINCE THIS DATA SET WAS COLLECTED AND SOME PARTS OF THE DATA MAY NO LONGER BE AN ACCURATE REPRESENTATION OF THE SURFACE CONDITIONS.



- Shoalest Sounding
- 21' Curve of Depth
- 22' Curve of Depth
- - - CenterLine
- ToeLine
- StationLine



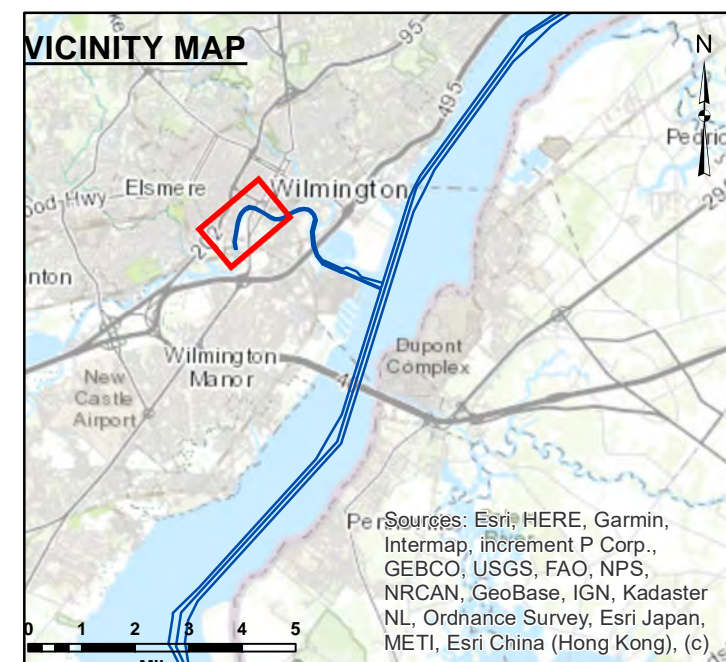


STA. 0+000 to 10+500 -- 09 APR 24  
 STA. 10+500 to 16+829 -- 10 APR 24

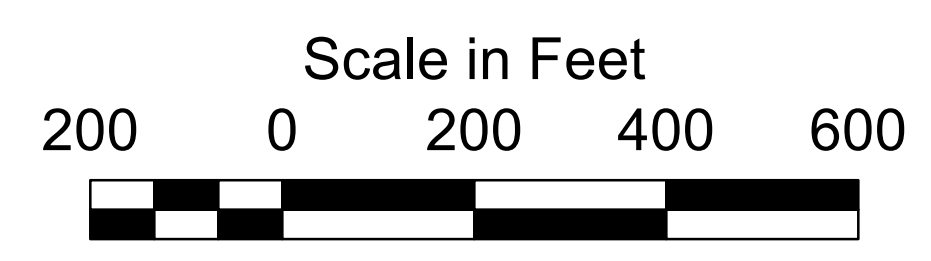
**DISCLAIMER**  
 This map was prepared by the Government of the United States of America and is not to be construed as a warranty, representation, or endorsement of any product or service. The Government disclaims any liability for the use of this map for purposes other than those intended. The Government disclaims any liability for the use of this map for purposes other than those intended.

U.S. ARMY CORPS OF ENGINEERS  
 PHILADELPHIA DISTRICT  
 Surveyed By: \_\_\_\_\_  
 Plotted By: \_\_\_\_\_  
 Checked By: \_\_\_\_\_  
 Approved: \_\_\_\_\_  
 Chief Survey Section

CHRISTINA RIVER, DELAWARE  
 EXAMINATION  
 STA. 0+000 to STA. 16+844.37



- THIS SURVEY MEETS STANDARDS AS OUTLINED IN CORPS OF ENGINEERS' HYDROGRAPHIC SURVEY MANUAL EM1110-2-1003, DATED NOVEMBER 30, 2013 FOR NAVIGATION AND DREDGING SUPPORT SURVEYS.
- HORIZONTAL REFERENCE - NAD 83, NEW JERSEY STATE PLANE, ZONE 2900, U.S. FOOT.
- VERTICAL REFERENCE - MEAN LOWER LOW WATER, WHICH IS 2.98' BELOW N.A.V.D. 88.
- GEOD 12B AND NOAA TIDAL EPOCH: 1983 - 2001 WERE USED. SOUNDINGS ARE EXPRESSED IN FEET AND TENTHS AND REFER TO MEAN LOWER LOW WATER.
- CONTOURS WERE GENERATED USING THE MINIMUM DEPTH WITHIN SEARCH RADIUS OF 18'.
- HYPACK, INC. SOFTWARE WAS USED TO PERFORM THE SOUNDING SELECTION AND CONTOUR GENERATION.
- THE INFORMATION DEPICTED ON THIS MAP REPRESENT THE RESULTS OF SURVEYS MADE ON THE DATES INDICATED AND CAN ONLY BE CONSIDERED AS INDICATING THE GENERAL CONDITIONS EXISTING AT THAT TIME.
- THE POSITIONS OF THE AIDS TO NAVIGATION ARE PROVIDED FOR INFORMATION ONLY, AND SHOULD NOT BE USED FOR NAVIGATION.
- THE LIMITS OF THE FEDERAL CHANNEL DEPICT THE MOST CURRENT CHANNEL FRAMEWORK AVAILABLE WHICH CAN ALSO BE DOWNLOADED HERE:  
<http://navigation.usace.army.mil/Survey/Framework>
- BASE MAPPING LINEWORK OR ORTHOPHOTOGRAPHY HAS BEEN COMPILED FROM A VARIETY OF SOURCES AND DATES AND IS INTENDED TO PORTRAY GENERAL CHARACTERISTICS OF THE SHORELINE AND OTHER FEATURES. TEMPORAL CHANGES MAY HAVE OCCURRED SINCE THIS DATA SET WAS COLLECTED AND SOME PARTS OF THE DATA MAY NO LONGER BE AN ACCURATE REPRESENTATION OF THE SURFACE CONDITIONS.



- Shoalest Sounding
- 21' Curve of Depth
- 22' Curve of Depth
- CenterLine
- ToeLine
- StationLine

E-CR-03