



**U.S. ARMY CORPS OF ENGINEERS
REGULATORY PROGRAM
APPROVED JURISDICTIONAL DETERMINATION FORM (INTERIM)
NAVIGABLE WATERS PROTECTION RULE**

I. ADMINISTRATIVE INFORMATION

Completion Date of Approved Jurisdictional Determination (AJD): 10/7/2020

ORM Number: NAP-2020-00607-95

Associated JDs: N/A

Review Area Location¹: State/Territory: Pennsylvania City: Fort Washington/Upper Dublin Township

County/Parish/Borough: Montgomery

Center Coordinates of Review Area: Latitude 40.137685°N Longitude -75.18912°W

II. FINDINGS

A. Summary: Check all that apply. At least one box from the following list MUST be selected. Complete the corresponding sections/tables and summarize data sources.

- The review area is comprised entirely of dry land (i.e., there are no waters or water features, including wetlands, of any kind in the entire review area). Rationale: N/A or describe rationale.
- There are “navigable waters of the United States” within Rivers and Harbors Act jurisdiction within the review area (complete table in Section II.B).
- There are “waters of the United States” within Clean Water Act jurisdiction within the review area (complete appropriate tables in Section II.C).
- There are waters or water features excluded from Clean Water Act jurisdiction within the review area (complete table in Section II.D).

B. Rivers and Harbors Act of 1899 Section 10 (§ 10)²

§ 10 Name	§ 10 Size	§ 10 Criteria	Rationale for § 10 Determination
N/A.	N/A.	N/A.	N/A.

C. Clean Water Act Section 404

Territorial Seas and Traditional Navigable Waters ((a)(1) waters): ³			
(a)(1) Name	(a)(1) Size	(a)(1) Criteria	Rationale for (a)(1) Determination
N/A.	N/A.	N/A.	N/A.

Tributaries ((a)(2) waters):			
(a)(2) Name	(a)(2) Size	(a)(2) Criteria	Rationale for (a)(2) Determination
Stream #1	845.0	linear feet	(a)(2) Perennial tributary contributes surface water flow directly or indirectly to an (a)(1) water in a typical year.
			Stream #1 is an unnamed perennial stream that flows directly to Pine Run; which in turn flows directly to Sandy Run; which in turn flows directly to Wissahickon Creek; which in turn flows directly to the Schuylkill River, an (a)(1) waterway.

¹ Map(s)/figure(s) are attached to the AJD provided to the requestor.

² If the navigable water is not subject to the ebb and flow of the tide or included on the District’s list of Rivers and Harbors Act Section 10 navigable waters list, do NOT use this document to make the determination. The District must continue to follow the procedure outlined in 33 CFR part 329.14 to make a Rivers and Harbors Act Section 10 navigability determination.

³ A stand-alone TNW determination is completed independently of a request for an AJD. A stand-alone TNW determination is conducted for a specific segment of river or stream or other type of waterbody, such as a lake, where upstream or downstream limits or lake borders are established. A stand-alone TNW determination should be completed following applicable guidance and should NOT be documented on the AJD Form.



**U.S. ARMY CORPS OF ENGINEERS
REGULATORY PROGRAM
APPROVED JURISDICTIONAL DETERMINATION FORM (INTERIM)
NAVIGABLE WATERS PROTECTION RULE**

Lakes and ponds, and impoundments of jurisdictional waters ((a)(3) waters):				
(a)(3) Name	(a)(3) Size		(a)(3) Criteria	Rationale for (a)(3) Determination
N/A.	N/A.	N/A.	N/A.	N/A.

Adjacent wetlands ((a)(4) waters):				
(a)(4) Name	(a)(4) Size		(a)(4) Criteria	Rationale for (a)(4) Determination
Wetland #1	3.178	acre(s)	(a)(4) Wetland abuts an (a)(1)-(a)(3) water.	Wetland #1 directly abuts Stream #1, an (a)(2) waterway.
Wetland #2	0.70	acre(s)	(a)(4) Wetland abuts an (a)(1)-(a)(3) water.	Wetland #2 directly abuts Stream #1, an (a)(2) waterway.

D. Excluded Waters or Features

Excluded waters ((b)(1) – (b)(12)): ⁴				
Exclusion Name	Exclusion Size		Exclusion ⁵	Rationale for Exclusion Determination
N/A.	N/A.	N/A.	N/A.	N/A.

III. SUPPORTING INFORMATION

A. Select/enter all resources that were used to aid in this determination and attach data/maps to this document and/or references/citations in the administrative record, as appropriate.

- Information submitted by, or on behalf of, the applicant/consultant: [Drawing E-1, entitled “Map of Wetlands”, dated 25 October 2020, prepared by Upper Dublin Township, revised on 29 October 2020 by USACE; and data sheets prepared by Nova Consultants, Ltd., dated 18 February 2019.](#)

This information is sufficient for purposes of this AJD.

Rationale: [N/A](#)

- Data sheets prepared by the Corps: [Title\(s\) and/or date\(s\).](#)
- Photographs: [Aerial and Other: Site Photos dated 18 February 2019 and 07 October 2020.](#)
- Corps site visit(s) conducted on: [07 October 2020 by Robert Youhas, Biologist, CENAP-Regulatory Branch, Applications Section II.](#)
- Previous Jurisdictional Determinations (AJDs or PJDs): [N/A](#)
- Antecedent Precipitation Tool: [provide detailed discussion in Section III.B.](#)
- USDA NRCS Soil Survey: [Montgomery County, PA Soil Survey Sheet Numbers 50 and 51.](#)
- USFWS NWI maps: [NWI Wetlands Map \(Ambler, PA Quadrangle\).](#)
- USGS topographic maps: [Ambler, PA Quadrangle.](#)

Other data sources used to aid in this determination:

Data Source (select)	Name and/or date and other relevant information
USGS Sources	N/A.
USDA Sources	N/A.

⁴ Some excluded waters, such as (b)(2) and (b)(4), may not be specifically identified on the AJD form unless a requestor specifically asks a Corps district to do so. Corps districts may, in case-by-case instances, choose to identify some or all of these waters within the review area.

⁵ Because of the broad nature of the (b)(1) exclusion and in an effort to collect data on specific types of waters that would be covered by the (b)(1) exclusion, four sub-categories of (b)(1) exclusions were administratively created for the purposes of the AJD Form. These four sub-categories are not new exclusions, but are simply administrative distinctions and remain (b)(1) exclusions as defined by the NWPR.

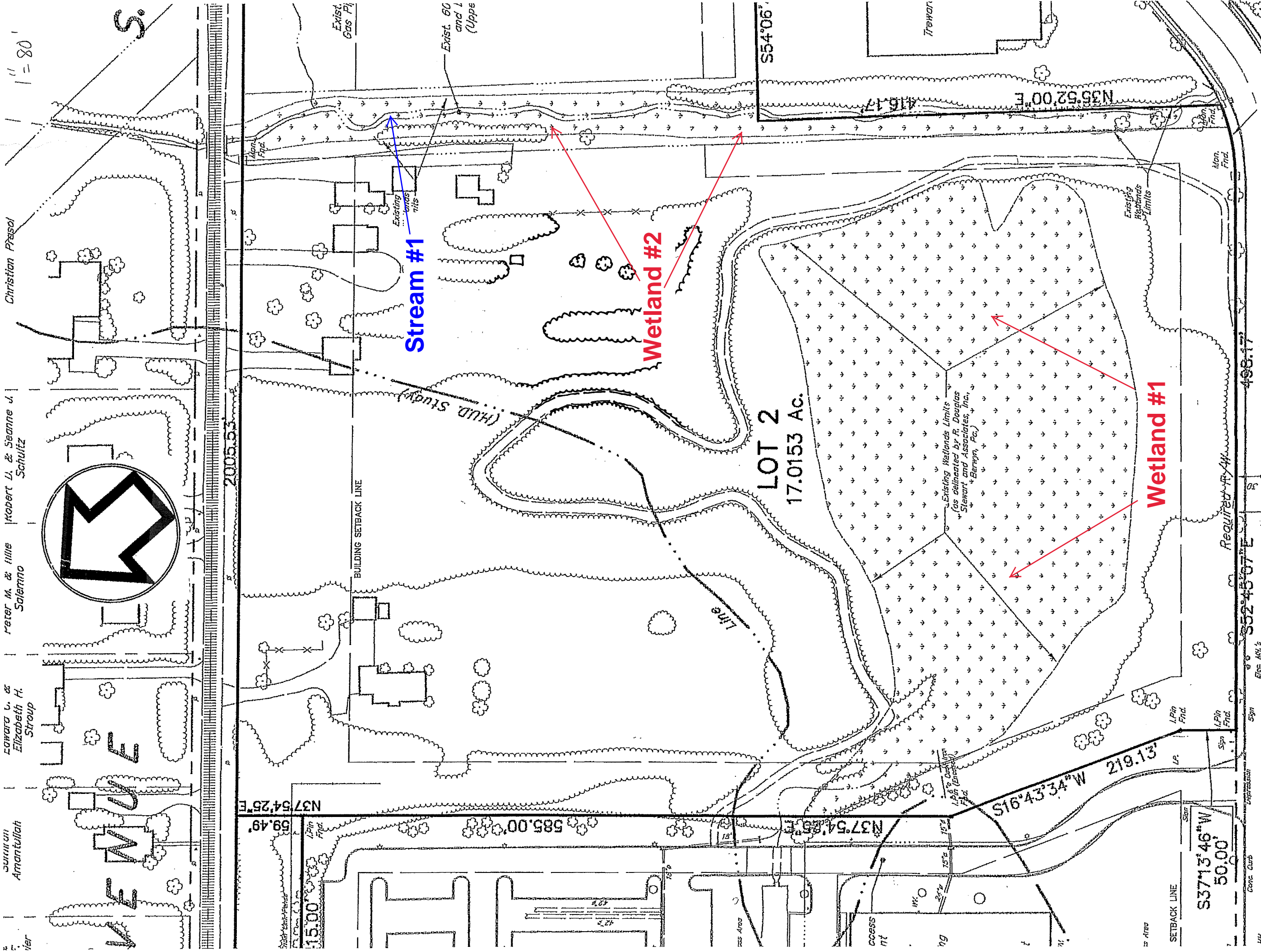


**U.S. ARMY CORPS OF ENGINEERS
REGULATORY PROGRAM
APPROVED JURISDICTIONAL DETERMINATION FORM (INTERIM)
NAVIGABLE WATERS PROTECTION RULE**

Data Source (select)	Name and/or date and other relevant information
NOAA Sources	N/A.
USACE Sources	N/A.
State/Local/Tribal Sources	N/A.
Other Sources	N/A.

B. Typical year assessment(s): N/A.

C. Additional comments to support AJD: N/A.



1" = 80'

Christian Presol

Robert L. & Seanne J. Schultz

Peter M. & Julie Salerno

Edward L. & Elizabeth H. Stroup

Suriani Amantullah

MAP OF WETLANDS
DATE: OCTOBER 25, 2020
LOCATION:
530 VIRGINIA DRIVE
FT. WASHINGTON, PA 19034
PREPARED FOR:
UPPER DUBLIN TOWNSHIP
801 LOCH ALSH AVE.
FT. WASHINGTON, PA 19034
SCALE: 1" = 80'

