



**U.S. ARMY CORPS OF ENGINEERS
REGULATORY PROGRAM
APPROVED JURISDICTIONAL DETERMINATION FORM (INTERIM)
NAVIGABLE WATERS PROTECTION RULE**

I. ADMINISTRATIVE INFORMATION

Completion Date of Approved Jurisdictional Determination (AJD): 8/11/2021
 ORM Number: NAP-2021-00364-95
 Associated JDs: N/A
 Review Area Location¹: State/Territory: Pennsylvania City: Warwick Township
 County/Parish/Borough: Bucks
 Center Coordinates of Review Area: Latitude 40.218346 Longitude -75.070758

II. FINDINGS

- A. Summary:** Check all that apply. At least one box from the following list MUST be selected. Complete the corresponding sections/tables and summarize data sources.
- The review area is comprised entirely of dry land (i.e., there are no waters or water features, including wetlands, of any kind in the entire review area). Rationale: N/A.
 - There are “navigable waters of the United States” within Rivers and Harbors Act jurisdiction within the review area (complete table in Section II.B).
 - There are “waters of the United States” within Clean Water Act jurisdiction within the review area (complete appropriate tables in Section II.C).
 - There are waters or water features excluded from Clean Water Act jurisdiction within the review area (complete table in Section II.D).

B. Rivers and Harbors Act of 1899 Section 10 (§ 10)²

§ 10 Name	§ 10 Size	§ 10 Criteria	Rationale for § 10 Determination
N/A.	N/A.	N/A.	N/A.

C. Clean Water Act Section 404

Territorial Seas and Traditional Navigable Waters ((a)(1) waters):³

(a)(1) Name	(a)(1) Size	(a)(1) Criteria	Rationale for (a)(1) Determination
N/A.	N/A.	N/A.	N/A.

Tributaries ((a)(2) waters):

(a)(2) Name	(a)(2) Size	(a)(2) Criteria	Rationale for (a)(2) Determination
Feature A	0.15 acre(s)	(a)(2) Perennial tributary contributes surface water flow directly or indirectly to an (a)(1) water in a typical year.	Feature A is an unnamed perennial tributary of Little Neshaminy Creek which, in turn, flows directly to Neshaminy Creek, an (a)(1) waterway.

¹ Map(s)/figure(s) are attached to the AJD provided to the requestor.

² If the navigable water is not subject to the ebb and flow of the tide or included on the District's list of Rivers and Harbors Act Section 10 navigable waters list, do NOT use this document to make the determination. The District must continue to follow the procedure outlined in 33 CFR part 329.14 to make a Rivers and Harbors Act Section 10 navigability determination.

³ A stand-alone TNW determination is completed independently of a request for an AJD. A stand-alone TNW determination is conducted for a specific segment of river or stream or other type of waterbody, such as a lake, where upstream or downstream limits or lake borders are established. A stand-alone TNW determination should be completed following applicable guidance and should NOT be documented on the AJD Form.



**U.S. ARMY CORPS OF ENGINEERS
REGULATORY PROGRAM
APPROVED JURISDICTIONAL DETERMINATION FORM (INTERIM)
NAVIGABLE WATERS PROTECTION RULE**

Lakes and ponds, and impoundments of jurisdictional waters ((a)(3) waters):				
(a)(3) Name	(a)(3) Size		(a)(3) Criteria	Rationale for (a)(3) Determination
N/A.	N/A.	N/A.	N/A.	N/A.

Adjacent wetlands ((a)(4) waters):				
(a)(4) Name	(a)(4) Size		(a)(4) Criteria	Rationale for (a)(4) Determination
Feature B	0.65	acre(s)	(a)(4) Wetland abuts an (a)(1)-(a)(3) water.	Feature B is freshwater wetland that abuts an (a)(2) water (Feature A).

D. Excluded Waters or Features

Excluded waters ((b)(1) – (b)(12)): ⁴				
Exclusion Name	Exclusion Size		Exclusion ⁵	Rationale for Exclusion Determination
N/A.	N/A.	N/A.	N/A.	N/A.

III. SUPPORTING INFORMATION

A. Select/enter all resources that were used to aid in this determination and attach data/maps to this document and/or references/citations in the administrative record, as appropriate.

Information submitted by, or on behalf of, the applicant/consultant: [Sheets E-1 and E-2, entitled “NAP-2021-00364-95” last revised August 11, 2021; data sheets prepared by Nova Consultants, Ltd.](#)

This information is sufficient for purposes of this AJD.

Rationale: [N/A](#)

Data sheets prepared by the Corps: [Title\(s\) and/or date\(s\)](#).

Photographs: [Aerial and Other: GoogleEarth Aerial Photos: 16 October 2020, 08 February 2019, 17 October 2016, 24 May 2016, 07 October 2011, 09 May 2010, 11 April 2010, 24 August 2005, 06 June 2005, 05 June 2004, 31 December 2001, 23 April 1999, and 13 April 1992 ; Site Photos: 25 May 2021.](#)

Corps site visit(s) conducted on: [25 May 2021 by Robert Youhas, Biologist, CENAP-Regulatory Branch, Application Section II.](#)

Previous Jurisdictional Determinations (AJDs or PJDs): [ORM Number\(s\) and date\(s\)](#).

Antecedent Precipitation Tool: [provide detailed discussion in Section III.B.](#)

USDA NRCS Soil Survey: [Bucks/Philadelphia County USACE Soil Survey Sheet #58.](#)

USFWS NWI maps: [USFWS NWI Map – Hatboro Quadrangle.](#)

USGS topographic maps: [Hatboro, PA Quadrangle 7.5-Minute Series.](#)

Other data sources used to aid in this determination:

Data Source (select)	Name and/or date and other relevant information
USGS Sources	N/A.
USDA Sources	N/A.
NOAA Sources	N/A.
USACE Sources	N/A.
State/Local/Tribal Sources	N/A.

⁴ Some excluded waters, such as (b)(2) and (b)(4), may not be specifically identified on the AJD form unless a requestor specifically asks a Corps district to do so. Corps districts may, in case-by-case instances, choose to identify some or all of these waters within the review area.

⁵ Because of the broad nature of the (b)(1) exclusion and in an effort to collect data on specific types of waters that would be covered by the (b)(1) exclusion, four sub-categories of (b)(1) exclusions were administratively created for the purposes of the AJD Form. These four sub-categories are not new exclusions, but are simply administrative distinctions and remain (b)(1) exclusions as defined by the NWPR.



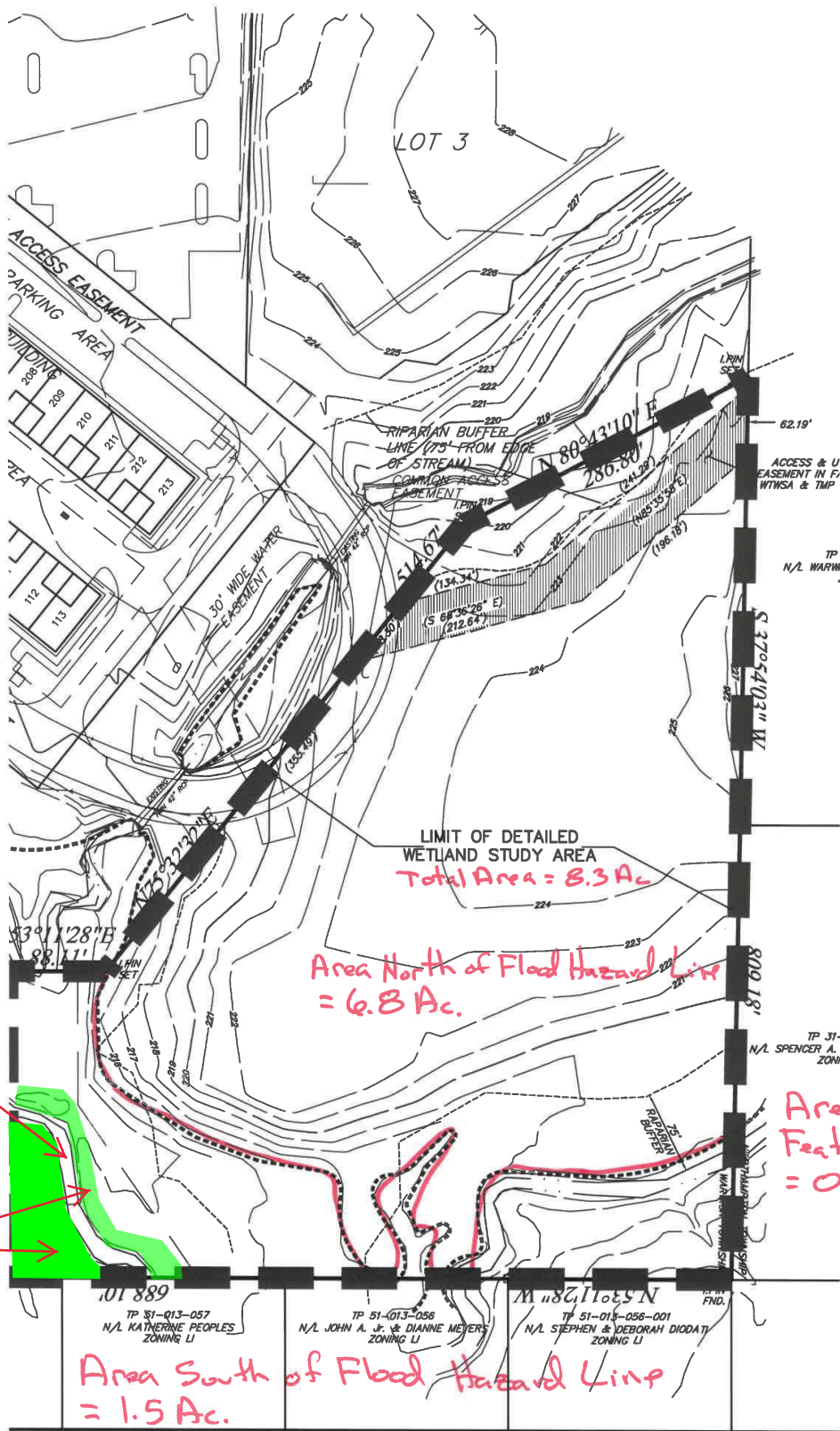
U.S. ARMY CORPS OF ENGINEERS
REGULATORY PROGRAM
APPROVED JURISDICTIONAL DETERMINATION FORM (INTERIM)
NAVIGABLE WATERS PROTECTION RULE

Data Source (select)	Name and/or date and other relevant information
Other Sources	N/A.

B. Typical year assessment(s): N/A

C. Additional comments to support AJD: Apart from Features A and B, the remainder of the “Limit of Detailed Wetland Study Area” depicted on the enclosed drawings E-1 and E-2 is comprised of dry land (i.e. sited within uplands) in its entirety.

Scale 1"=100'



Feature A
 (unnamed perennial tributary of Little Neshaminy Creek)
 = 0.15 acres

Feature B
 [freshwater wetland that abuts an (a)(2) water]
 = 0.65 acres

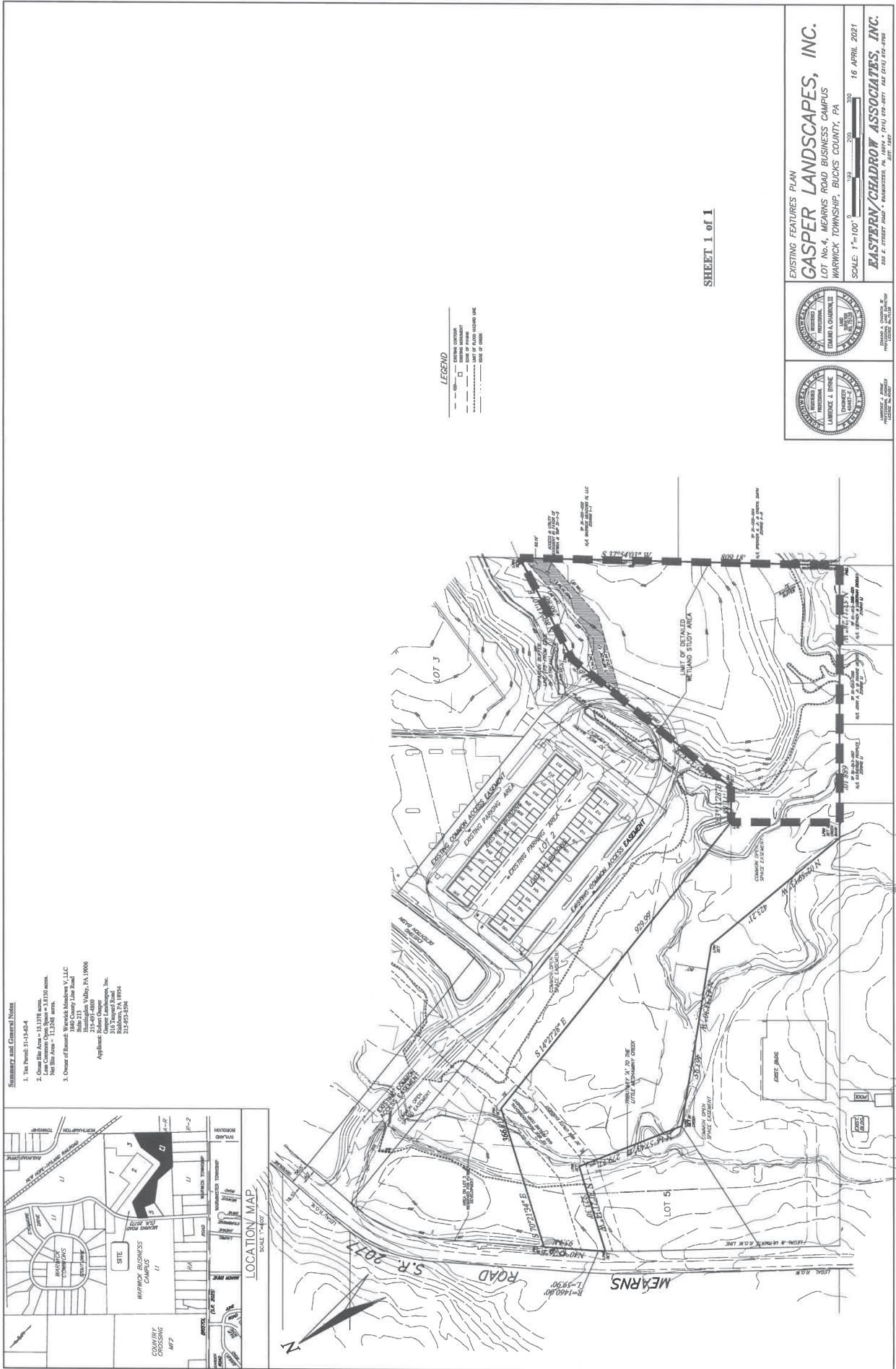
LIMIT OF DETAILED WETLAND STUDY AREA
 Total Area = 8.3 Ac

Area North of Flood Hazard Line
 = 6.8 Ac.

Area of Stream Feature
 = 0.15 Ac.

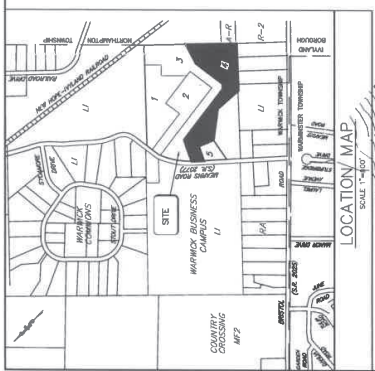
Area South of Flood Hazard Line
 = 1.5 Ac.

TP 51-013-057 N/L KATHERINE PEOPLES ZONING LI
 TP 51-013-056 N/L JOHN A. J. & DIANNE MEYERS ZONING LI
 TP 51-013-058-001 N/L STEPHEN & DEBORAH DIODATI ZONING LI



Summary and General Notes

- The Tract 5, 11-14-64.
- Lot 2, 11-14-64.
- Lot 3, 11-14-64.
- Lot 4, 11-14-64.
- Lot 5, 11-14-64.
- Lot 6, 11-14-64.
- Lot 7, 11-14-64.
- Lot 8, 11-14-64.
- Lot 9, 11-14-64.
- Lot 10, 11-14-64.
- Lot 11, 11-14-64.
- Lot 12, 11-14-64.
- Lot 13, 11-14-64.
- Lot 14, 11-14-64.
- Lot 15, 11-14-64.
- Lot 16, 11-14-64.
- Lot 17, 11-14-64.
- Lot 18, 11-14-64.
- Lot 19, 11-14-64.
- Lot 20, 11-14-64.
- Lot 21, 11-14-64.
- Lot 22, 11-14-64.
- Lot 23, 11-14-64.
- Lot 24, 11-14-64.
- Lot 25, 11-14-64.
- Lot 26, 11-14-64.
- Lot 27, 11-14-64.
- Lot 28, 11-14-64.
- Lot 29, 11-14-64.
- Lot 30, 11-14-64.
- Lot 31, 11-14-64.
- Lot 32, 11-14-64.
- Lot 33, 11-14-64.
- Lot 34, 11-14-64.
- Lot 35, 11-14-64.
- Lot 36, 11-14-64.
- Lot 37, 11-14-64.
- Lot 38, 11-14-64.
- Lot 39, 11-14-64.
- Lot 40, 11-14-64.
- Lot 41, 11-14-64.
- Lot 42, 11-14-64.
- Lot 43, 11-14-64.
- Lot 44, 11-14-64.
- Lot 45, 11-14-64.
- Lot 46, 11-14-64.
- Lot 47, 11-14-64.
- Lot 48, 11-14-64.
- Lot 49, 11-14-64.
- Lot 50, 11-14-64.

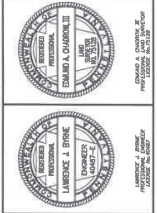


LEGEND

- 100' ---
- 200' ---
- 300' ---
- 400' ---
- 500' ---
- 600' ---
- 700' ---
- 800' ---
- 900' ---
- 1000' ---
- 1100' ---
- 1200' ---
- 1300' ---
- 1400' ---
- 1500' ---
- 1600' ---
- 1700' ---
- 1800' ---
- 1900' ---
- 2000' ---
- 2100' ---
- 2200' ---
- 2300' ---
- 2400' ---
- 2500' ---
- 2600' ---
- 2700' ---
- 2800' ---
- 2900' ---
- 3000' ---
- 3100' ---
- 3200' ---
- 3300' ---
- 3400' ---
- 3500' ---
- 3600' ---
- 3700' ---
- 3800' ---
- 3900' ---
- 4000' ---
- 4100' ---
- 4200' ---
- 4300' ---
- 4400' ---
- 4500' ---
- 4600' ---
- 4700' ---
- 4800' ---
- 4900' ---
- 5000' ---

SHEET 1 of 1

EXISTING FEATURES PLAN
CASPER LANDSCAPES, INC.
 LOT No. 4, MEARNS ROAD BUSINESS CAMPUS
 WARWICK TOWNSHIP, BUCKS COUNTY, PA
 SCALE: 1"=100'
 16 APRIL 2021



E-2685-1