



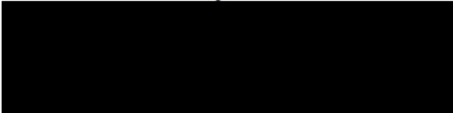
DEPARTMENT OF THE ARMY
U.S. ARMY CORPS OF ENGINEERS, PHILADELPHIA DISTRICT
1650 ARCH STREET
PHILADELPHIA PENNSYLVANIA 19103-2004

December 7, 2023

Regulatory Branch

SUBJECT: Approved Jurisdictional Determination NAP-2023-00791-85
Delaware Army National Guard Readiness Center NC
Center coordinates (39.633322°N, 75.609853 °W)

Mark Orndorff
Delaware Army National Guard



Dear Mr. Orndorff:

This Approved Jurisdictional Determination (AJD) is provided in response to your request on November 3, 2023 for a determination of federal jurisdiction by this office. The site associated with your request is located at the Delaware Army National Guard Readiness Center at 1199 River Road in New Castle, New Castle County, Delaware.

The findings of this AJD are documented in the **enclosed** MFR (Memorandum for Record) Form. The findings are also depicted on the **enclosed** plan(s) identified as NATIONAL GUARD READINESS CENTER WATERS OF THE U.S. DELINEATION NEW CASTLE COUNTY, DELAWARE, prepared by Century Engineering, dated May 5, 2023, 1 sheet.

A Department of the Army permit is required for work or structures in "navigable waters of the United States" pursuant to Section 10 the Rivers and Harbors Act (RHA) of 1899 and the discharge of dredged or fill material into "waters of the United States" pursuant to Section 404 of the Clean Water Act (CWA). Any proposal to perform these activities within areas of federal jurisdiction requires prior approval by this office.

The delineation included herein has been conducted to identify the location and extent of the aquatic resources for purposes of the Clean Water Act for the particular site identified in this request. This delineation may not be valid for the Wetland Conservation Provisions of the Food Security Act of 1985, as amended. If you or your tenant are USDA program participants, or anticipate participation in USDA programs, you should discuss the applicability of an NRCS Certified Wetland Determination with the local USDA service center, prior to starting work.

This AJD is valid for a period of five (5) years. This AJD is issued in accordance with current federal regulations and is based upon the existing site conditions and information provided by you in your application. This office reserves the right to reevaluate and modify this AJD at any time should the existing site conditions or federal regulations change, or should the information provided by you prove to be false, incomplete or inaccurate.

You may request an administrative appeal of this AJD if you do not accept this determination. **Enclosed** you will find a combined Notification of Appeal Process (NAP) and Request for Appeal (RFA) form. Should you wish to appeal this determination, you must submit a completed RFA form to the North Atlantic Division Office within 60 days of the date on the form. Additionally, for the appeal to be accepted, the Corps must determine that it is complete and that it meets the criteria for appeal under 33 CFR Part 331.5. The form should be submitted to Andrew Dangler, Regulatory Program Manager, at [REDACTED]. If you do not have the means to submit this form electronically, you may send it by mail to the Division office at:

US Army Corps of Engineers North Atlantic Division
[REDACTED]

If you have any questions regarding this matter, please contact [REDACTED]
[REDACTED]

Sincerely,



Date:
2023.12.07
08:53:57 -05'00'

Todd A. Hoernemann
Chief, Applications Section I

Enclosure(s)

cc:
TJ Austin, Century Engineering
Wetlands and Waterways Section, DDNREC
New Castle Conservation District
Wetlands Branch, USEPA Region 3

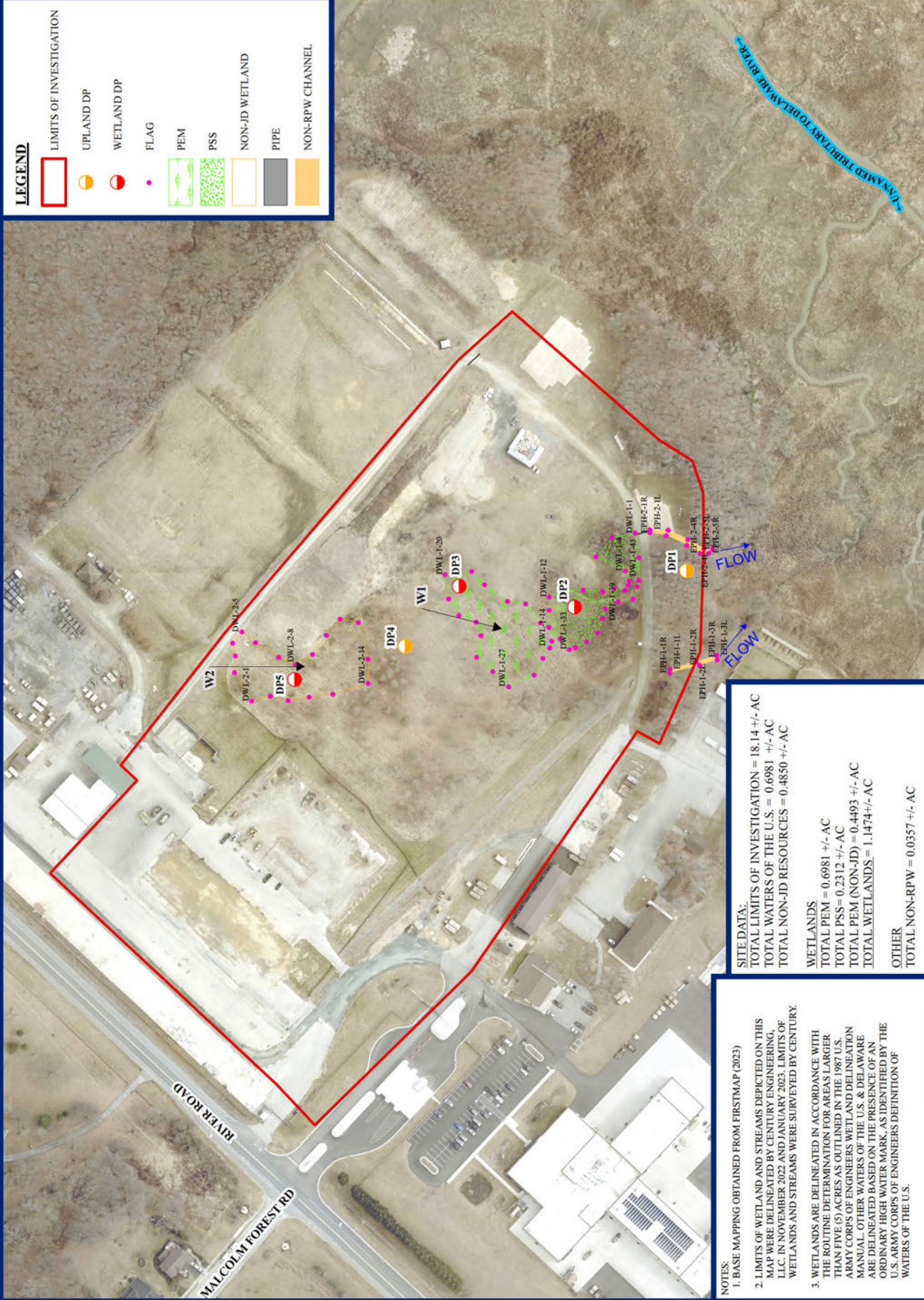


1 inch = 150 feet

Project Manager:	AS
Drawn:	TA
Job Number:	20232961.001A
Revisions:	5/5/2023

LEGEND

	LIMITS OF INVESTIGATION
	UPLAND DP
	WETLAND DP
•	FLAG
	PEM
	PSS
	NON-JD WETLAND
	PIPE
	NON-RPW CHANNEL



SITE DATA:
TOTAL LIMITS OF INVESTIGATION = 18.14 +/- AC
TOTAL WATERS OF THE U.S. = 0.6981 +/- AC
TOTAL NON-JD RESOURCES = 0.4850 +/- AC

WETLANDS
TOTAL PEM = 0.6981 +/- AC
TOTAL PSS = 0.2312 +/- AC
TOTAL PEM (NON-JD) = 0.4493 +/- AC
TOTAL WETLANDS = 1.1474 +/- AC

OTHER
TOTAL NON-RPW = 0.0357 +/- AC

NOTES:
1. BASE MAPPING OBTAINED FROM FIRSTMAP (2023)
2. LIMITS OF WETLAND AND STREAMS DEPICTED ON THIS MAP WERE DELINEATED BY CENTURY ENGINEERING, LLC. IN NOVEMBER 2022 AND JANUARY 2023. LIMITS OF WETLANDS AND STREAMS WERE SURVEYED BY CENTURY
3. WETLANDS ARE DELINEATED IN ACCORDANCE WITH THE ROUTINE DETERMINATION FOR AREAS LARGER THAN FIVE (5) ACRES AS OUTLINED IN THE 1987 U.S. ARMY CORPS OF ENGINEERS WETLAND DELINEATION MANUAL. OTHER WATERS OF THE U.S. & DELAWARE ARE DELINEATED BASED ON THE PRESENCE OF AN ORDINARY HIGH WATER MARK, AS IDENTIFIED BY THE U.S. ARMY CORPS OF ENGINEERS DEFINITION OF WATERS OF THE U.S.