

Legend

Project Area

Map Date: 11/8/2019
Source: ESRI 2017
Projection: NAD 1983 State Plane
Pennsylvania South US Foot

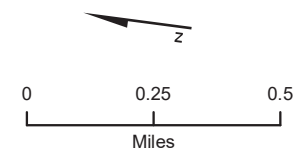
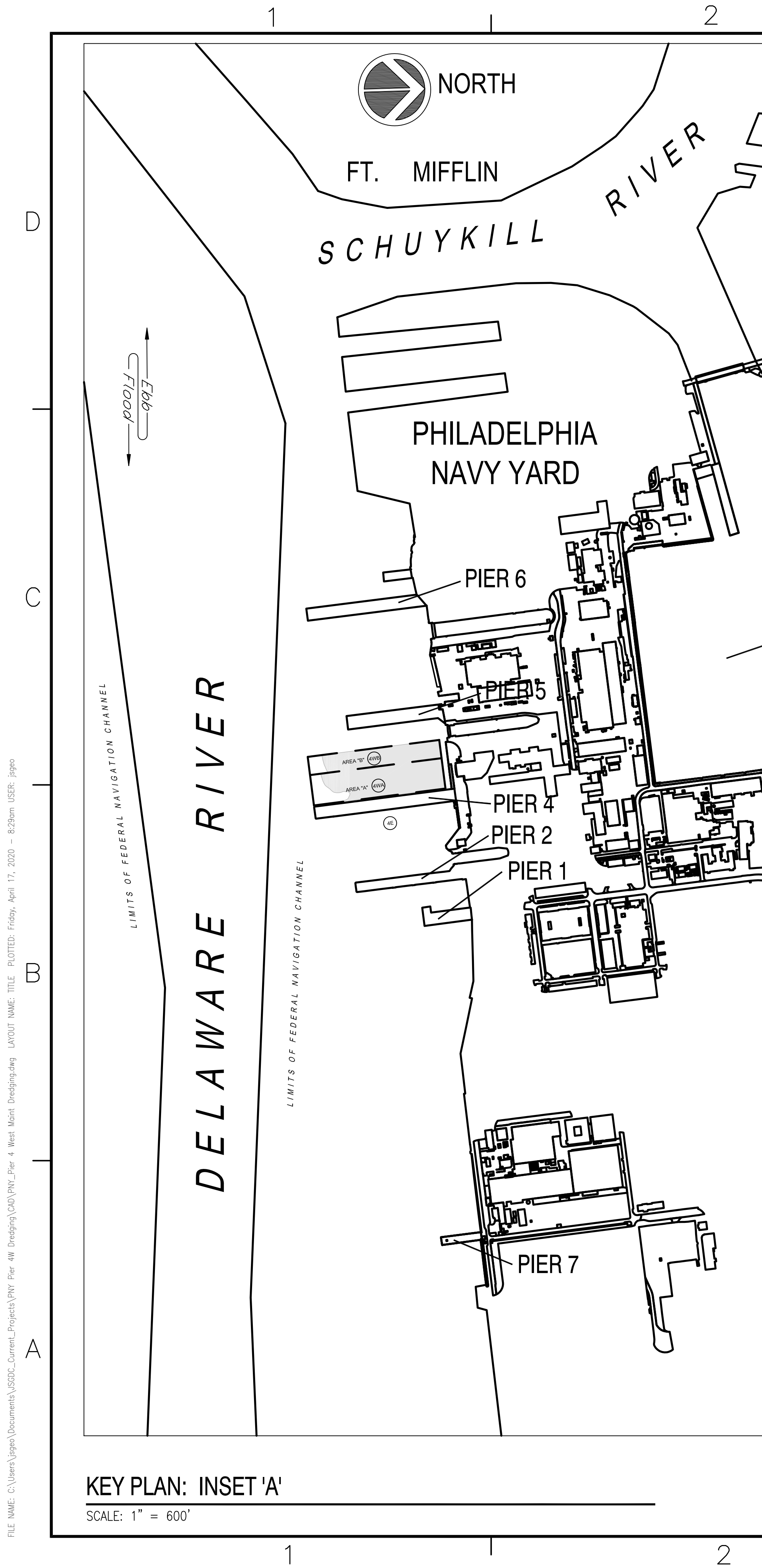


Figure ES-1
Pier 4 Maintenance
Dredging Project Area
Philadelphia Naval Yard Annex
Philadelphia, Pennsylvania



DREDGE AREA LABELS

PRELIMINARY SITE PLAN FOR:
FY 2020 MAINTENANCE DREDGING of PIER 4 WEST
PHILADELPHIA NAVY YARD - PHILADELPHIA, PA

LIST OF SHEETS

HYDROGRAPHIC NOTES



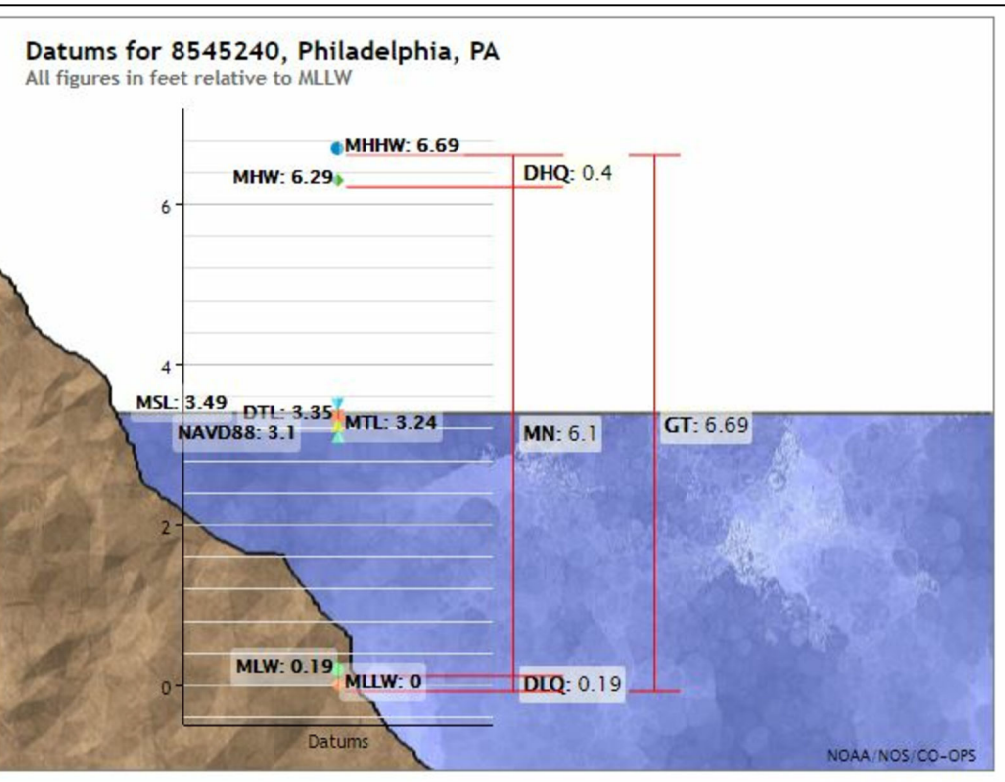
Approved By N.J.D.E.P.

[illegible]

FILE NAME: C:\Users\jsgae\Documents\JSGDC_Current_Projects\PNY_Pier 4W Dredging\CAO\PNY_Pier 4W Maint Dredging.dwg LAYOUT NAME: DETAIL PLOTTED: Wednesday, April 15, 2020 10:24pm USER: jsgae

ESTIMATED DREDGING VOLUME (Incl. Addl. Siltation Projected to November 2020)								
DREDGE AREA ID	SHEET	PIER AND/OR APPROACHES	BERTH AREA (SY)	CONTRACT DEPTH (FT) (MLLW)	OVER DREDGE DEPTH (FT) (MLLW)	ESTIMATED VOLUME AVAILABLE WITHIN DREDGE LIMITS (CY)		
BASE BID: PHILADELPHIA NAVY YARD MAINTENANCE DREDGING						CONTRACT DEPTH	OVERDREDGE DEPTH	TOTAL VOLUME
4WA		PIER 4 WEST - Dredge Area "A"	32,600	-37	-39	91,502	18,356	109,858
4WB		PIER 4 WEST - Dredge Area "B"	20,700	-28	-30	25,650	11,015	36,665
ESTIMATED VOLUME OF BASE BID:						117,152	29,371	146,523

- NOTES:
- ESTIMATED VOLUMES SHOWN HEREIN INCLUDE ADDITIONAL SILTATION EXPECTED TO OCCUR FROM THE DATE OF THE MOST RECENT CONDITION SURVEY TO THE EXPECTED DATE OF DREDGING (NOVEMBER 2020).
 - CONTRACT DEPTHS AND OVERDREDGE DEPTHS SHOWN HEREIN REFER TO NOAA MEAN LOWER LOW WATER DATUM (MLLW).



Elevations on Mean Lower Low Water		
Station: 8545240, Philadelphia, PA		
Status: Accepted (Dec 21 2012)		
Units: Feet		
Control Station: 8551910 Ready Point, DE		
T.M.: 0		
Epoch: 1983-2001		
Datum: MLLW		
Datum	Value	Description
MHHW	6.69	Mean Higher-High Water
MHW	6.29	Mean High Water
MTL	3.24	Mean Tide Level
MSL	3.49	Mean Sea Level
DTL	3.35	Mean Diurnal Tide Level
MLW	0.19	Mean Low Water
MLLW	0.00	Mean Lower-Low Water
NAVD88	3.10	North American Vertical Datum of 1988

DREDGING AND DESIGN NOTES

- SOUNDINGS SHOWN ON INDIVIDUAL SHEETS ARE FROM ACTUAL SURVEY DATES AS ANNOTATED ON EACH SHEET.
- NAVAL STATION DREDGING AUTHORIZED UNDER C.O.E. PERMIT.
- DREDGE LIMITS SHOWN ARE APPROXIMATIONS BASED ON ESTIMATED SILTATION. REQUIRED DREDGING AREA SHALL BE ESTABLISHED USING THE REQUIRED CONTRACT DEPTH CONTOUR AS DETERMINED BY PRE-DREDGE SURVEY PERFORMED BY THE GOVERNMENT.



APPROVED BY
APPROVED
By James S. George, P.E. at 10:58 pm, Apr 15, 2020

C-CORE HYDRO TEAM SUPERVISOR

AE LOGO

APPROVED

JAMES E. DONAHUE, R.A.
DESIGN PRODUCTION DIRECTOR
FOR COMMANDER NAVFAC
DATE

APPROVED

ACTIVITY - SATISFACTORY TO DATE

PROJECT MDSXXXXXXXXXXXXXXXXXXXX

DES JSG DRW JSG ECHK JSG

BRANCH MGR DEBORAH L BREWSTER, P.E.

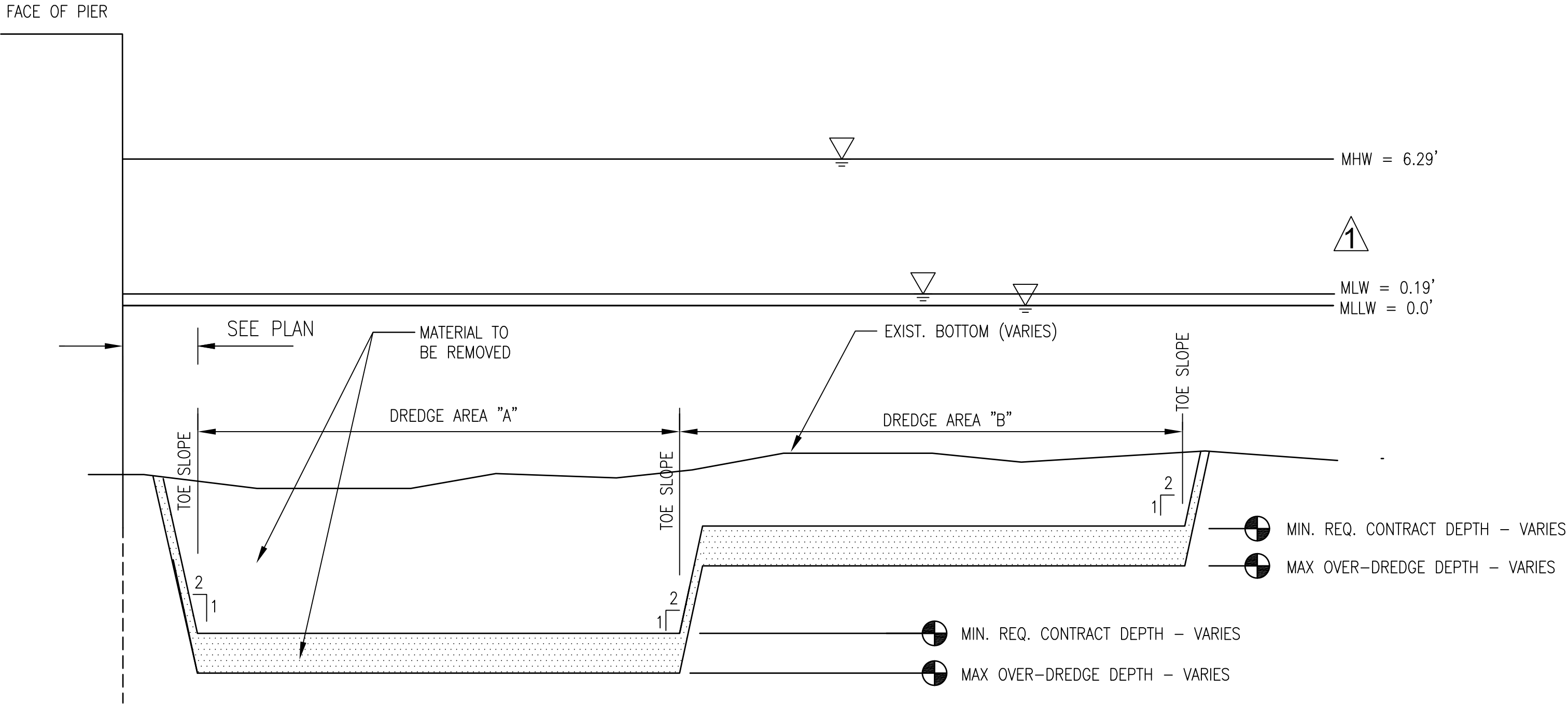
CHIEF ENG/ARCH ERIC J. ALLEN, PE

FIRE PROTECTION N/A

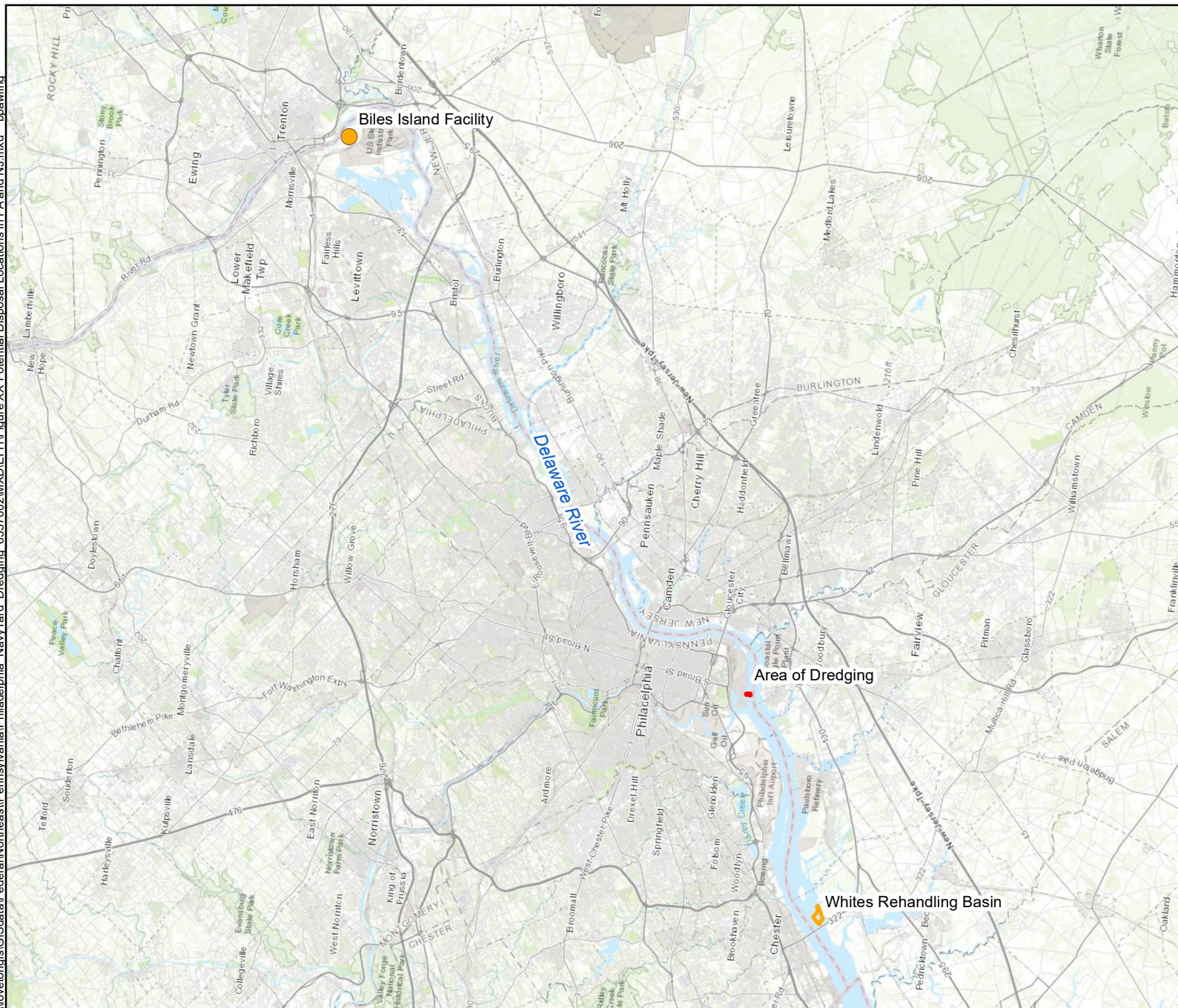
DEPARTMENT OF THE NAVY
NAVAL FACILITIES ENGINEERING COMMAND
NAVAL FACILITIES ENGINEERING COMMAND ~ MID ATLANTIC
CAPITAL IMPROVEMENTS CORE - HYDROGRAPHIC ENGINEERING TEAM
NAVAL STATION - NORFOLK, VIRGINIA
PHILADELPHIA NAVY YARD
PHILADELPHIA, PA
FY 20 MAINTENANCE DREDGING
PIER 4 WEST - PHILADELPHIA NAVY YARD
DETAIL SHEET

CODE ID. NO. 80091 SIZE D
SCALE: AS NOTED
MAXIMO NO.
JOB ORDER NO.
WORK ORDER NO. 1614484
CONSTR. CONTR. NO. N/A
NAVFAC DRAWING NO. 12779352
SHEET 2 OF 10
V-002

Approved By N.J.D.E.P.



A TYPICAL TRANSVERSE SECTION THROUGH SLIP DREDGE AREA(S)
V-002 NOT TO SCALE



Legend

- Area of Dredging
- Potential Disposal Locations

Map Date: 4/21/2020
Source: ESRI 2017
Projection: NAD 1983 State Plane
Pennsylvania South US Foot



0 5 10
Miles





Aerial view of Biles Island CDF.



Aerial view of Whites Rehandling Basin and CDF.