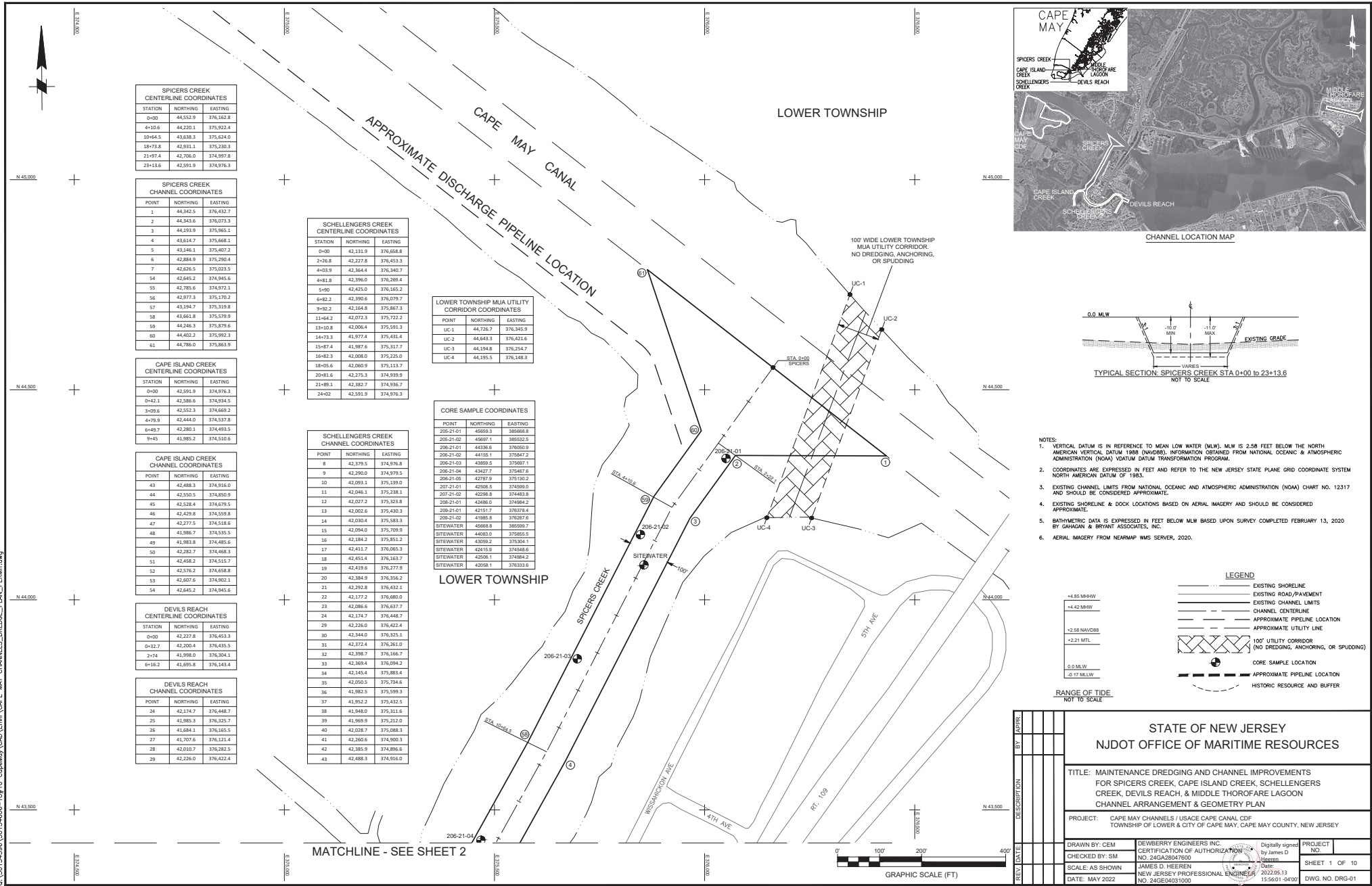
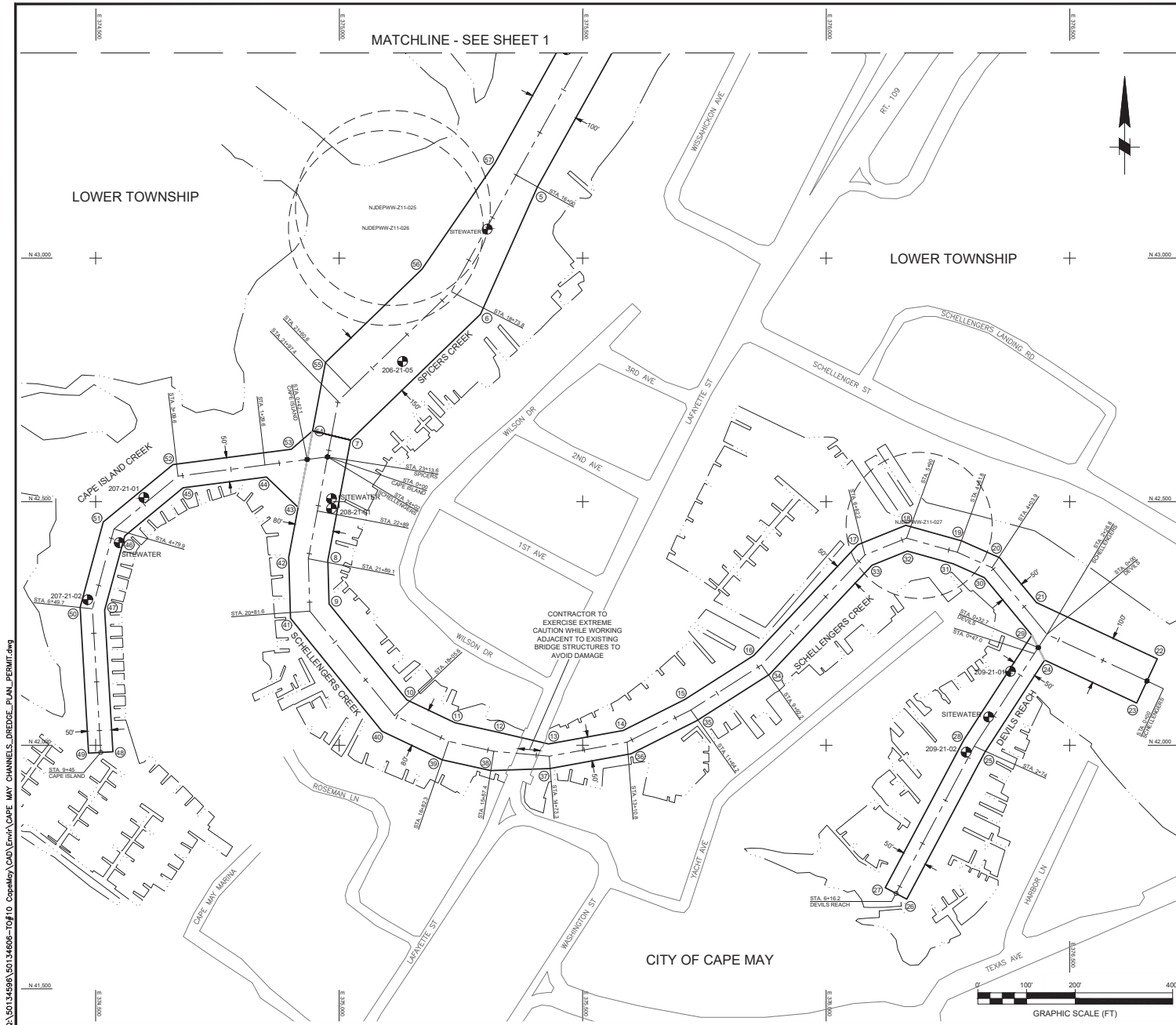


Q:\50134596\50134606-T0#10 CapeMay_CAD\DWG\CAPE MAY CHANNELS_DREDGE_PLAN_PERMIT.dwg





4.85 MHW
4.42 MHW
2.58 NAVD83
2.21 MTL

0.0 MLW
-0.17 MLW

RANGE OF TIDE
NOT TO SCALE

4.82 MHW
4.40 MHW
2.58 NAVD83
2.20 MTL

0.0 MLW
-0.17 MLW

RANGE OF TIDE
NOT TO SCALE

4.82 MHW
4.40 MHW
2.58 NAVD83
2.20 MTL

0.0 MLW
-0.17 MLW

RANGE OF TIDE
NOT TO SCALE

4.82 MHW
4.40 MHW
2.58 NAVD83
2.20 MTL

0.0 MLW
-0.17 MLW

RANGE OF TIDE
NOT TO SCALE

4.85 MHW
4.41 MHW
2.58 NAVD83
2.21 MTL

0.0 MLW
-0.16 MLW

RANGE OF TIDE
NOT TO SCALE

TYPICAL SECTION: SPICERS CREEK STA 0+00 TO 23+13.6
NOT TO SCALE

TYPICAL SECTION: CAPE ISLAND CREEK STA 0+42.1 TO 9+45
NOT TO SCALE

TYPICAL SECTION: SCHELLENGERS CREEK STA 0+00 TO 16+00
NOT TO SCALE

TYPICAL SECTION: SCHELLENGERS CREEK STA 16+00 TO 24+02
NOT TO SCALE

TYPICAL SECTION: DEVILS REACH STA 0+32.7 TO 6+16.2
NOT TO SCALE

NOTES:

1. VERTICAL DATUM IS IN REFERENCE TO MEAN LOW WATER (MLW). MLW IS 2.58 FEET BELOW THE NORTH AMERICAN VERTICAL DATUM 1988 (NAVD88) FOR SPICERS CREEK (206), CAPE ISLAND CREEK (207), & SCHELLENGERS CREEK (208) AND IS 2.59 FEET BELOW THE NAVD88 DATUM FOR DEVILS CREEK (209). INFORMATION OBTAINED FROM NATIONAL OCEANIC & ATMOSPHERIC ADMINISTRATION (NOAA) DATUM TRANSFORMATION PROGRAM.
2. COORDINATES ARE EXPRESSED IN FEET AND REFER TO THE NEW JERSEY STATE PLANE GRID COORDINATE SYSTEM NORTH AMERICAN DATUM OF 1983.
3. EXISTING CHANNEL LIMITS FROM NATIONAL OCEANIC AND ATMOSPHERIC ADMINISTRATION (NOAA) CHART NO. 12317 AND SHOULD BE CONSIDERED APPROXIMATE.
4. EXISTING SHORELINE & DOCK LOCATIONS BASED ON AERIAL IMAGERY AND SHOULD BE CONSIDERED APPROXIMATE.
5. BATHYMETRIC DATA IS EXPRESSED IN FEET BELOW MLW BASED UPON SURVEY COMPLETED FEBRUARY 13, 2020 BY CAHAGAN & BRYANT ASSOCIATES, INC.

LEGEND

- EXISTING SHORELINE
- EXISTING ROAD/PAVEMENT
- CHANNEL CENTERLINE
- CHANNEL LIMITS
- CORE SAMPLE LOCATION
- APPROXIMATE PIPELINE LOCATION
- HISTORIC RESOURCE AND BUFFER

STATE OF NEW JERSEY
NJDOT OFFICE OF MARITIME RESOURCES

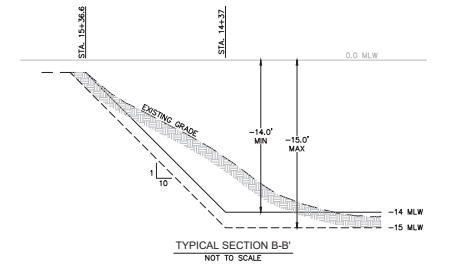
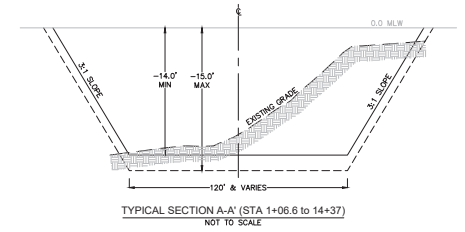
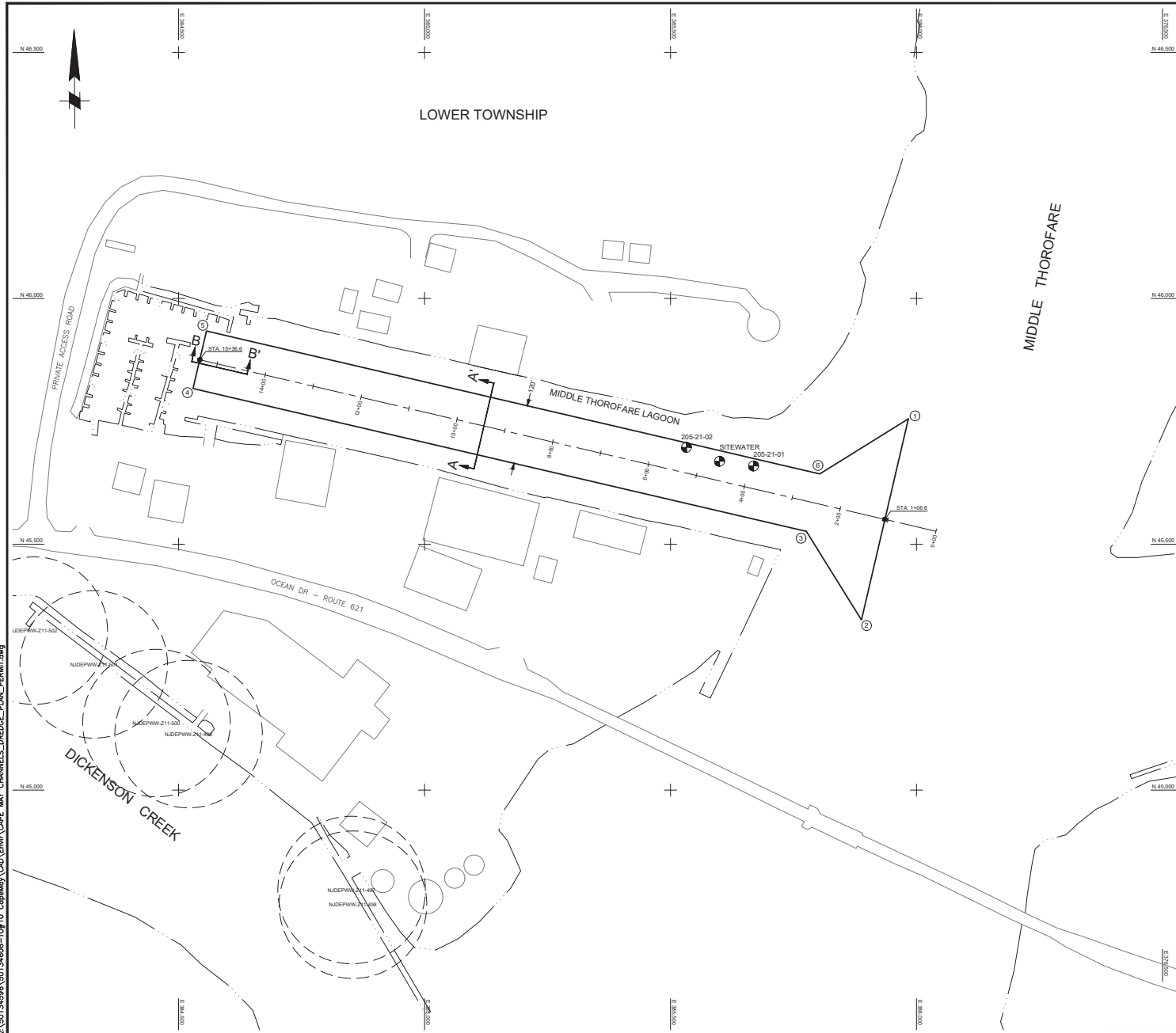
TITLE: MAINTENANCE DREDGING AND CHANNEL IMPROVEMENTS
FOR SPICERS CREEK, CAPE ISLAND CREEK, SCHELLENGERS
CREEK, DEVILS REACH, & MIDDLE THOROFARE LAGOON
CHANNEL ARRANGEMENT & GEOMETRY PLAN

PROJECT: CAPE MAY CHANNELS / USACE CAPE CANAL CDF
TOWNSHIP OF LOWER & CITY OF CAPE MAY, CAPE MAY COUNTY, NEW JERSEY

DRAWN BY: CEM	DEWBERRY ENGINEERS INC. CERTIFICATION OF AUTHORIZATION	PROJECT NO.
CHECKED BY: SM	NO. 24GA28047600	SHEET 2 OF 10
SCALE: AS SHOWN	JAMES D. HEEREN NEW JERSEY PROFESSIONAL ENGINEER	DWG. NO. DRG-02
DATE: MAY 2022	NO. 24GE04031000	

Q:\134698\130134698-TOJ10 CapeMay CAD\Envr\CAPE MAY CHANNELS_DREDGE_PLAN_PERMIT.dwg

Q:\50134598\50134598-T0110_CapeMay_CAD\Envr\Cape May CHANNELS_DREDGE_PLAN_PERMIT.dwg

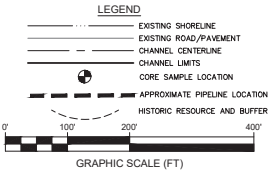
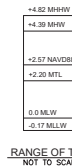


MIDDLE THOROFARE CENTERLINE COORDINATES		
STATION	NORTHING	EASTING
0+00	45,000.0	385,000.0
1+00	45,000.0	385,000.0
15+36.6	45,075.2	384,543.1

MIDDLE THOROFARE CHANNEL COORDINATES		
POINT	NORTHING	EASTING
1	45,000.0	385,000.0
2	45,000.0	385,000.0
3	45,000.0	385,000.0
4	45,000.0	384,500.0
5	45,000.0	384,500.0
6	45,000.0	385,000.0

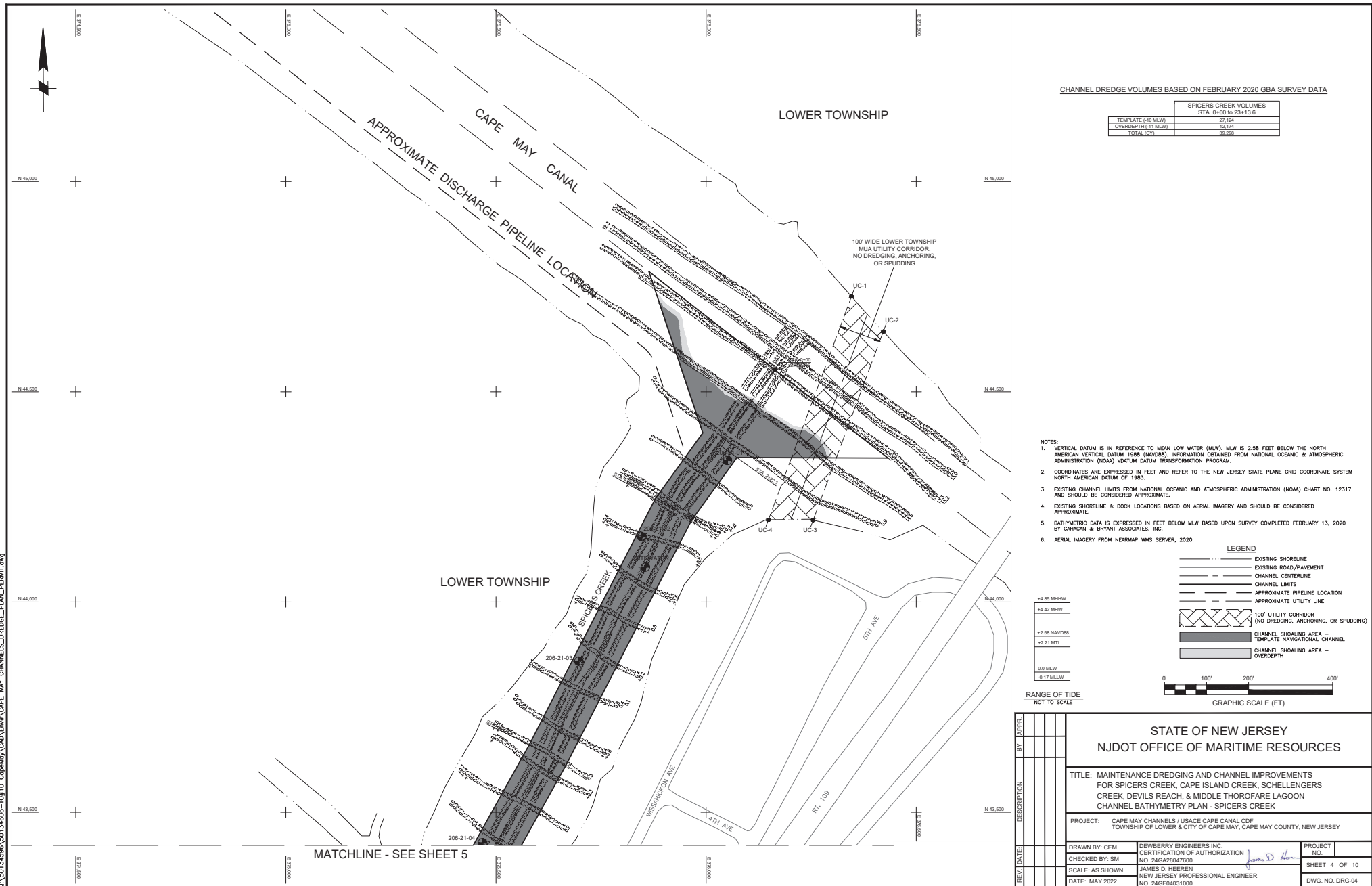
NOTES:

- VERTICAL DATUM IS IN REFERENCE TO MEAN LOW WATER (MLW). MLW IS 2.57 FEET BELOW THE NORTH AMERICAN VERTICAL DATUM 1988 (NAVD83). INFORMATION OBTAINED FROM NATIONAL OCEANIC & ATMOSPHERIC ADMINISTRATION (NOAA) DATUM TRANSFORMATION PROGRAM.
- COORDINATES ARE EXPRESSED IN FEET AND REFER TO THE NEW JERSEY STATE PLANE GRID COORDINATE SYSTEM NORTH AMERICAN DATUM OF 1983.
- EXISTING CHANNEL LIMITS FROM NATIONAL OCEANIC AND ATMOSPHERIC ADMINISTRATION (NOA) CHART NO. 12317 AND SHOULD BE CONSIDERED APPROXIMATE.
- EXISTING SHORELINE & DOCK LOCATIONS BASED ON AERIAL IMAGERY AND SHOULD BE CONSIDERED APPROXIMATE.
- BATHYMETRIC DATA IS EXPRESSED IN FEET BELOW MLW BASED UPON SURVEY COMPLETED FEBRUARY 13, 2020 BY CAHMAN & BRYANT ASSOCIATES, INC.



STATE OF NEW JERSEY NJDOT OFFICE OF MARITIME RESOURCES	
TITLE: MAINTENANCE DREDGING AND CHANNEL IMPROVEMENTS FOR SPICERS CREEK, CAPE ISLAND CREEK, SCHELLENGERS CREEK, DEVILS REACH, & MIDDLE THOROFARE LAGOON CHANNEL ARRANGEMENT & GEOMETRY PLAN	
PROJECT: CAPE MAY CHANNELS / USACE CAPE CANAL CDF TOWNSHIP OF LOWER & CITY OF CAPE MAY, CAPE MAY COUNTY, NEW JERSEY	
DRAWN BY: CEM	DEWBERRY ENGINEERS INC. CERTIFICATION OF AUTHORIZATION NO. 24GA28047600
CHECKED BY: SM	JAMES D. HEEREN NEW JERSEY PROFESSIONAL ENGINEER NO. 24GE04031000
SCALE: AS SHOWN	PROJECT NO. 24GE04031000
DATE: MAY 2022	SHEET 3 OF 10 DWG. NO. DRG-03

Q:\S0134698\S0134698-T0110 CapeMay\CAD\Envr\CAPE MAY CHANNELS_DREDGE_PLAN_PERMIT.dwg



MATCHLINE - SEE SHEET 4

CHANNEL DREDGE VOLUMES BASED ON FEBRUARY 2020 GBA SURVEY DATA

SPICERS CREEK VOLUMES	
STA. 0+00 to 23+13.6	
TEMPLATE (-10 MLW)	17,129
OVERDEPTH (-11 MLW)	12,174
TOTAL (CY)	29,298



LOWER TOWNSHIP

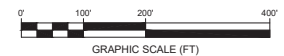
LOWER TOWNSHIP

NOTES:

1. VERTICAL DATUM IS IN REFERENCE TO MEAN LOW WATER (MLW). MLW IS 2.58 FEET BELOW THE NORTH AMERICAN VERTICAL DATUM 1988 (NAVD83) FOR SPICERS CREEK (200), CAPE ISLAND CREEK (207), & SCHELLENGERS CREEK (208) AND IS 2.59 FEET BELOW THE NAVD83 DATUM FOR DEVILS CREEK (209). INFORMATION OBTAINED FROM NATIONAL OCEANIC & ATMOSPHERIC ADMINISTRATION (NOAA) DATUM DATUM TRANSFORMATION PROGRAM.
2. COORDINATES ARE EXPRESSED IN FEET AND REFER TO THE NEW JERSEY STATE PLANE GRID COORDINATE SYSTEM NORTH AMERICAN DATUM OF 1983.
3. EXISTING CHANNEL LIMITS FROM NATIONAL OCEANIC AND ATMOSPHERIC ADMINISTRATION (NOAA) CHART NO. 12317 AND SHOULD BE CONSIDERED APPROXIMATE.
4. EXISTING SHOULDER & DOCK LOCATIONS BASED ON AERIAL IMAGERY AND SHOULD BE CONSIDERED APPROXIMATE.
5. BATHYMETRIC DATA IS EXPRESSED IN FEET BELOW MLW BASED UPON SURVEY COMPLETED FEBRUARY 13, 2020 BY GAGAN & BRYANT ASSOCIATES, INC.

LEGEND

- EXISTING SHORELINE
- EXISTING ROAD/PAVEMENT
- CHANNEL CENTERLINE
- CHANNEL LIMITS
- HISTORIC RESOURCE AND BUFFER
- CHANNEL SHOULDER AREA - TEMPLATE NAVIGATIONAL CHANNEL
- CHANNEL SHOULDER AREA - OVERDEPTH

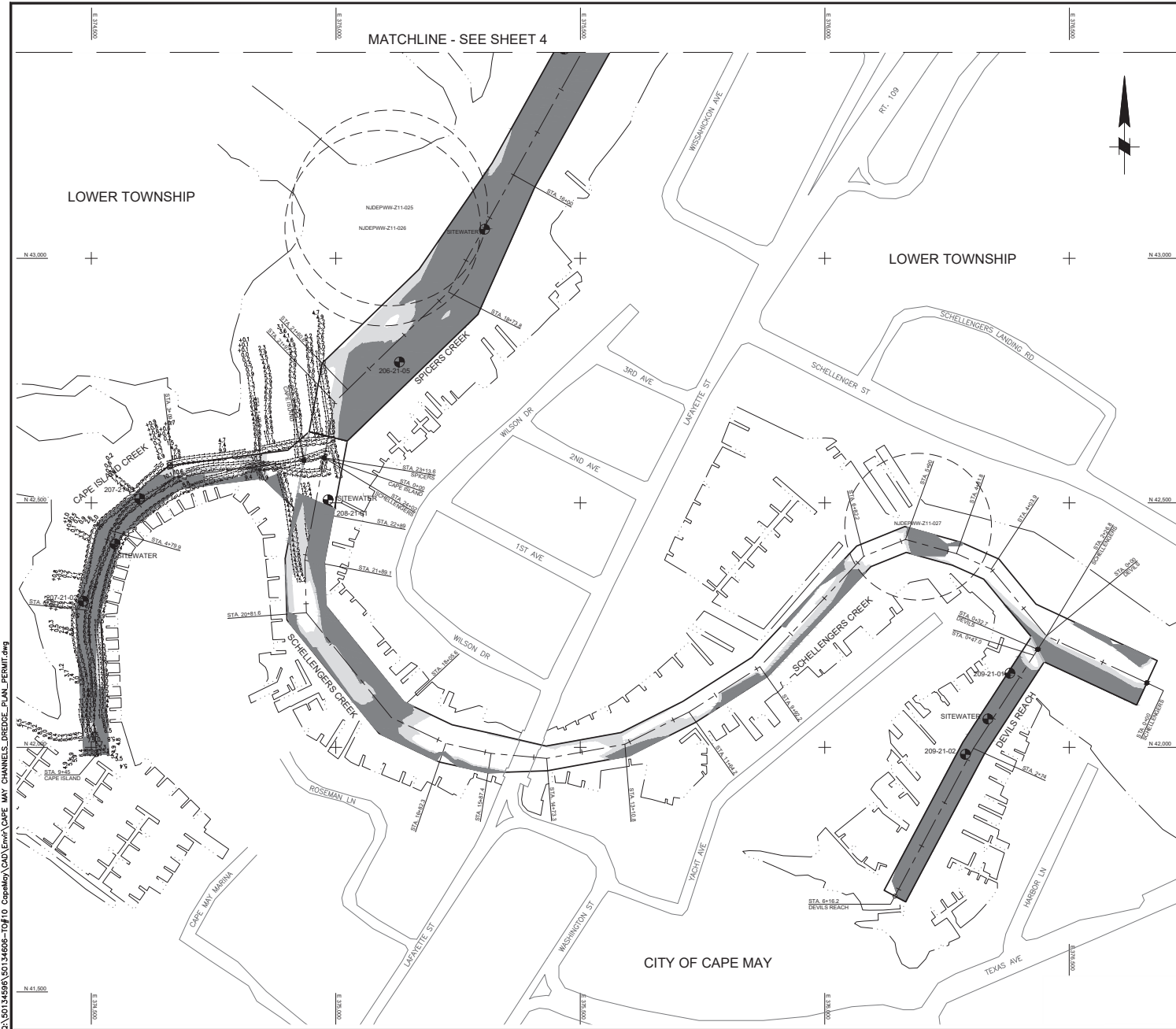


REV	DATE	DESCRIPTION	BY	APPROV

STATE OF NEW JERSEY	
NJDOT OFFICE OF MARITIME RESOURCES	
TITLE: MAINTENANCE DREDGING AND CHANNEL IMPROVEMENTS FOR SPICERS CREEK, CAPE ISLAND CREEK, SCHELLENGERS CREEK, DEVILS REACH, & MIDDLE THOROFARE LAGOON CHANNEL BATHYMETRY PLAN - SPICERS CREEK	
PROJECT: CAPE MAY CHANNELS / USACE CAPE CANAL CDF TOWNSHIP OF LOWER & CITY OF CAPE MAY, CAPE MAY COUNTY, NEW JERSEY	
DRAWN BY: CEM	DEWBERRY ENGINEERS INC. CERTIFICATION OF AUTHORIZATION
CHECKED BY: SM	NO. 24GA28047600
SCALE: AS SHOWN	JAMES D. HEEREN NEW JERSEY PROFESSIONAL ENGINEER
DATE: MAY 2022	NO. 24GE04031000
PROJECT NO.	
SHEET 5 OF 10	
DWG. NO. DRG-05	

CITY OF CAPE MAY

Q:\50134698\50134698-TOJ10 CapeMayCAD\Envr\CAPE MAY CHANNELS_DREDGE_PLAN_PERMIT.dwg



MATCHLINE - SEE SHEET 4

CHANNEL DREDGE VOLUMES BASED ON FEBRUARY 2020 GBA SURVEY DATA

CAPE ISLAND CREEK VOLUMES	
TEMPLATE (-10 MLW)	1,965
OVERDEPTH (-11 MLW)	1,959
TOTAL (CY)	5,943

- NOTES:
1. VERTICAL DATUM IS IN REFERENCE TO MEAN LOW WATER (MLW). MLW IS 2.58 FEET BELOW THE NORTH AMERICAN VERTICAL DATUM 1988 (NAVD83) FOR SPICERS CREEK (200), CAPE ISLAND CREEK (207), & SCHELLENGERS CREEK (208) AND IS 2.59 FEET BELOW THE NAVD83 DATUM FOR DEVILS CREEK (209). INFORMATION OBTAINED FROM NATIONAL OCEANIC & ATMOSPHERIC ADMINISTRATION (NOAA) DATUM DATUM TRANSFORMATION PROGRAM.
 2. COORDINATES ARE EXPRESSED IN FEET AND REFER TO THE NEW JERSEY STATE PLANE GRID COORDINATE SYSTEM NORTH AMERICAN DATUM OF 1983.
 3. EXISTING CHANNEL LIMITS FROM NATIONAL OCEANIC AND ATMOSPHERIC ADMINISTRATION (NOAA) CHART NO. 12317 AND SHOULD BE CONSIDERED APPROXIMATE.
 4. EXISTING SHORELINE & DOCK LOCATIONS BASED ON AERIAL IMAGERY AND SHOULD BE CONSIDERED APPROXIMATE.
 5. BATHYMETRIC DATA IS EXPRESSED IN FEET BELOW MLW BASED UPON SURVEY COMPLETED FEBRUARY 13, 2020 BY GAGAN & BRYANT ASSOCIATES, INC.

LEGEND

- EXISTING SHORELINE
- EXISTING ROAD/PAVEMENT
- CHANNEL CENTERLINE
- CHANNEL LIMITS
- HISTORIC RESOURCE AND BUFFER
- CHANNEL SHOULDER AREA - TEMPLATE NAVIGATIONAL CHANNEL
- CHANNEL SHOULDER AREA - OVERDEPTH

0 100' 200' 400'

GRAPHIC SCALE (FT)

REV	DATE	DESCRIPTION	BY	APPROV

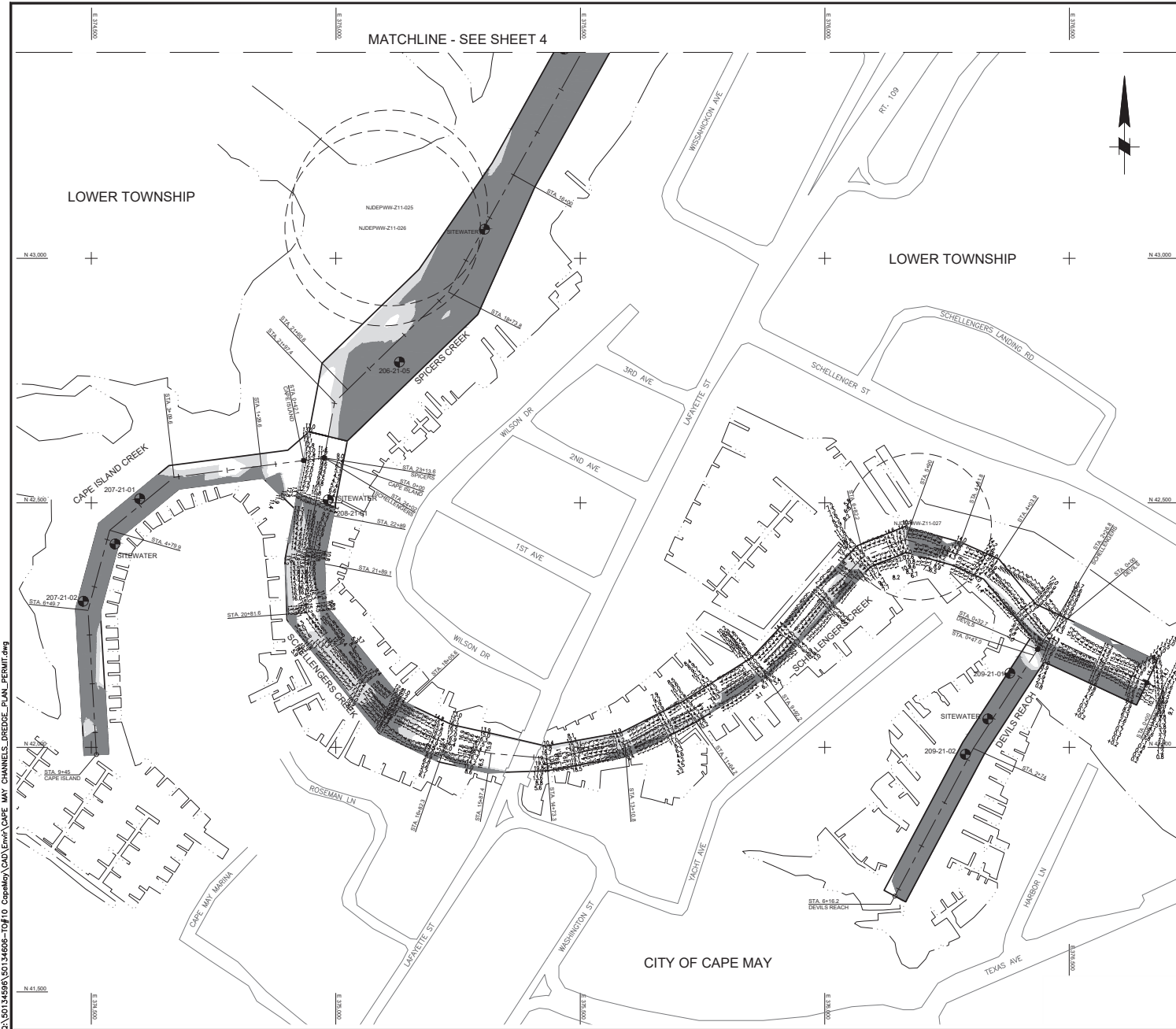
STATE OF NEW JERSEY
NJDOT OFFICE OF MARITIME RESOURCES

TITLE: MAINTENANCE DREDGING AND CHANNEL IMPROVEMENTS
FOR SPICERS CREEK, CAPE ISLAND CREEK, SCHELLENGERS
CREEK, DEVILS REACH, & MIDDLE THOROFARE LAGOON
CHANNEL BATHYMETRY PLAN - CAPE ISLAND CREEK

PROJECT: CAPE MAY CHANNELS / USACE CAPE CANAL CDF
TOWNSHIP OF LOWER & CITY OF CAPE MAY, CAPE MAY COUNTY, NEW JERSEY

DRAWN BY: CEM	DEWBERRY ENGINEERS INC.	PROJECT NO.
CHECKED BY: SM	CERTIFICATION OF AUTHORIZATION	NO. 24GA28047600
SCALE: AS SHOWN	JAMES D. HEEREN	SHEET 6 OF 10
DATE: MAY 2022	NEW JERSEY PROFESSIONAL ENGINEER	DWG. NO. DRG-06
	NO. 24GE04031000	

Q:\50134698\50134698-TOJ10 CapeMay CAD\Envr\CAPE MAY CHANNELS_DREDGE_PLAN_PERMIT.dwg



Q:\50134698\50134698-T0710 CapeMay CAD\Envr\CAPE MAY CHANNELS_DREDGE_PLAN_PERMIT.dwg

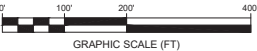
MATCHLINE - SEE SHEET 4

CHANNEL DREDGE VOLUMES BASED ON FEBRUARY 2020 GBA SURVEY DATA

SCHELLENGERS CREEK VOLUMES	
STA. 0+00 TO 16+00	
TEMPLATE (-13 MLW)	7.84
OVERDEPTH (-14 MLW)	1.555
TOTAL (CY)	11.519

- NOTES:
1. VERTICAL DATUM IS IN REFERENCE TO MEAN LOW WATER (MLW). MLW IS 2.58 FEET BELOW THE NORTH AMERICAN VERTICAL DATUM 1988 (NAVD88) FOR SPICERS CREEK (200), CAPE ISLAND CREEK (207), & SCHELLENGERS CREEK (208) AND IS 2.59 FEET BELOW THE NAVD88 DATUM FOR DEVILS CREEK (209). INFORMATION OBTAINED FROM NATIONAL OCEANIC & ATMOSPHERIC ADMINISTRATION (NOAA) DATUM DATUM TRANSFORMATION PROGRAM.
 2. COORDINATES ARE EXPRESSED IN FEET AND REFER TO THE NEW JERSEY STATE PLANE GRID COORDINATE SYSTEM NORTH AMERICAN DATUM OF 1983.
 3. EXISTING CHANNEL LIMITS FROM NATIONAL OCEANIC AND ATMOSPHERIC ADMINISTRATION (NOAA) CHART NO. 12317 AND SHOULD BE CONSIDERED APPROXIMATE.
 4. EXISTING SHORELINE & DOCK LOCATIONS BASED ON AERIAL IMAGERY AND SHOULD BE CONSIDERED APPROXIMATE.
 5. BATHYMETRIC DATA IS EXPRESSED IN FEET BELOW MLW BASED UPON SURVEY COMPLETED FEBRUARY 13, 2020 BY GAGAN & BRYANT ASSOCIATES, INC.

LEGEND	
	EXISTING SHORELINE
	EXISTING ROAD/PAVEMENT
	CHANNEL CENTERLINE
	CHANNEL LIMITS
	HISTORIC RESOURCE AND BUFFER
	CHANNEL SHOALING AREA - TEMPLATE NAVIGATIONAL CHANNEL
	CHANNEL SHOALING AREA - OVERDEPTH



REV	DATE	DESCRIPTION	BY	APPROV

STATE OF NEW JERSEY
NJDOT OFFICE OF MARITIME RESOURCES

TITLE: MAINTENANCE DREDGING AND CHANNEL IMPROVEMENTS
FOR SPICERS CREEK, CAPE ISLAND CREEK, SCHELLENGERS
CREEK, DEVILS REACH, & MIDDLE THOROFARE LAGOON
CHANNEL BATHYMETRY PLAN - SCHELLENGERS CREEK

PROJECT: CAPE MAY CHANNELS / USACE CAPE CANAL CDF
TOWNSHIP OF LOWER & CITY OF CAPE MAY, CAPE MAY COUNTY, NEW JERSEY

DRAWN BY: CEM	DEWBERRY ENGINEERS INC.	PROJECT NO.
CHECKED BY: SM	CERTIFICATION OF AUTHORIZATION	NO. 24GA28047600
SCALE: AS SHOWN	JAMES D. HEEREN	SHEET 7 OF 10
DATE: MAY 2022	NEW JERSEY PROFESSIONAL ENGINEER	DWG. NO. DRG-07
	NO. 24GE04031000	

MATCHLINE - SEE SHEET 4

CHANNEL DREDGE VOLUMES BASED ON FEBRUARY 2020 GBA SURVEY DATA

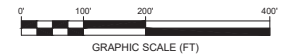
TEMPLATE (± MLW)	DEVILS REACH VOLUMES	
	STA. 0+00 to 6+16.2	
	2.518	
	1.462	
OVERDEPTH (± MLW)		
TOTAL (CU)	4.280	

NOTES:

1. VERTICAL DATUM IS IN REFERENCE TO MEAN LOW WATER (MLW). MLW IS 2.58 FEET BELOW THE NORTH AMERICAN VERTICAL DATUM 1988 (NAVD83) FOR SPICERS CREEK (200), CAPE ISLAND CREEK (207), & SCHELLENGERS CREEK (208) AND IS 2.59 FEET BELOW THE NAVD83 DATUM FOR DEVILS CREEK (209). INFORMATION OBTAINED FROM NATIONAL OCEANIC & ATMOSPHERIC ADMINISTRATION (NOAA) DATUM DATUM TRANSFORMATION PROGRAM.
2. COORDINATES ARE EXPRESSED IN FEET AND REFER TO THE NEW JERSEY STATE PLANE GRID COORDINATE SYSTEM NORTH AMERICAN DATUM OF 1983.
3. EXISTING CHANNEL LIMITS FROM NATIONAL OCEANIC AND ATMOSPHERIC ADMINISTRATION (NOAA) CHART NO. 12317 AND SHOULD BE CONSIDERED APPROXIMATE.
4. EXISTING SHOULDER & DOCK LOCATIONS BASED ON AERIAL IMAGERY AND SHOULD BE CONSIDERED APPROXIMATE.
5. BATHYMETRIC DATA IS EXPRESSED IN FEET BELOW MLW BASED UPON SURVEY COMPLETED FEBRUARY 13, 2020 BY GAGAN & BRYANT ASSOCIATES, INC.

LEGEND

- EXISTING SHORELINE
- EXISTING ROAD/PAVEMENT
- CHANNEL CENTERLINE
- CHANNEL LIMITS
- HISTORIC RESOURCE AND BUFFER
- CHANNEL SHOULDER AREA - TEMPLATE NAVIGATIONAL CHANNEL
- CHANNEL SHOULDER AREA - OVERDEPTH



STATE OF NEW JERSEY
NJDOT OFFICE OF MARITIME RESOURCES

TITLE: MAINTENANCE DREDGING AND CHANNEL IMPROVEMENTS
FOR SPICERS CREEK, CAPE ISLAND CREEK, SCHELLENGERS
CREEK, DEVILS REACH, & MIDDLE THOROFARE LAGOON
CHANNEL BATHYMETRY PLAN - DEVILS REACH

PROJECT: CAPE MAY CHANNELS / USACE CAPE CANAL CDF
TOWNSHIP OF LOWER & CITY OF CAPE MAY, CAPE MAY COUNTY, NEW JERSEY

DRAWN BY: CEM	DEWBERRY ENGINEERS INC.	PROJECT NO.
CHECKED BY: SM	CERTIFICATION OF AUTHORIZATION	SHEET 8 OF 10
SCALE: AS SHOWN	JAMES D. HEEREN	DWG. NO. DRG-08
DATE: MAY 2022	NEW JERSEY PROFESSIONAL ENGINEER	
	NO. 24GE04031000	

Q:\134698\130134698-10\10 CapeMay CAD\Envr\CAPE MAY CHANNELS_DREDGE_PLAN_PERMIT.dwg

LOWER TOWNSHIP

CHANNEL DREDGE VOLUMES BASED ON FEBRUARY 2020 GBA SURVEY DATA

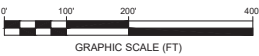
TOTAL CHANNEL VOLUME	
TEMPLATE	14,659
OVERDEPTH	2,655
TOTAL (CY)	20,655

MIDDLE THOROFARE

- NOTES:
1. VERTICAL DATUM IS IN REFERENCE TO MEAN LOW WATER (MLW). MLW IS 2.57 FEET BELOW THE NORTH AMERICAN VERTICAL DATUM 1988 (NAVD88). INFORMATION OBTAINED FROM NATIONAL OCEANIC & ATMOSPHERIC ADMINISTRATION (NOAA) VDATUM DATUM TRANSFORMATION PROGRAM.
 2. COORDINATES ARE EXPRESSED IN FEET AND REFER TO THE NEW JERSEY STATE PLANE GRID COORDINATE SYSTEM NORTH AMERICAN DATUM OF 1983.
 3. EXISTING CHANNEL LIMITS FROM NATIONAL OCEANIC AND ATMOSPHERIC ADMINISTRATION (NOAA) CHART NO. 12317 AND SHOULD BE CONSIDERED APPROXIMATE.
 4. EXISTING SHORELINE & DOCK LOCATIONS BASED ON AERIAL IMAGERY AND SHOULD BE CONSIDERED APPROXIMATE.
 5. BATHYMETRIC DATA IS EXPRESSED IN FEET BELOW MLW BASED UPON SURVEY COMPLETED FEBRUARY 13, 2020 BY GAHAGAN & BRYANT ASSOCIATES, INC.
 6. AERIAL IMAGERY FROM NEARMAP WMS SERVER, 2020.

LEGEND	
—	EXISTING SHORELINE
—	EXISTING ROAD/PAVEMENT
—	CHANNEL CENTERLINE
—	CHANNEL LIMITS
●	CORE SAMPLE LOCATION
■	CHANNEL SHOULDER AREA - TEMPLATE NAVIGATIONAL CHANNEL
■	CHANNEL SHOULDER AREA - OVERDEPTH

RANGE OF TIDE
NOT TO SCALE



BY		APPR	
DESCRIPTION		DATE	
DATE		PROJECT	
STATE OF NEW JERSEY NJDOT OFFICE OF MARITIME RESOURCES			
TITLE: MAINTENANCE DREDGING AND CHANNEL IMPROVEMENTS FOR SPICERS CREEK, CAPE ISLAND CREEK, SCHELLENGERS CREEK, DEVILS REACH, & MIDDLE THOROFARE LAGOON CHANNEL BATHYMETRY PLAN - MIDDLE THOROFARE LAGOON			
PROJECT: CAPE MAY CHANNELS / USACE CAPE CANAL CDF TOWNSHIP OF LOWER & CITY OF CAPE MAY, CAPE MAY COUNTY, NEW JERSEY			
DRAWN BY: CEM	DEWBERRY ENGINEERS INC.	CERTIFICATION OF AUTHORIZATION	PROJECT NO.
CHECKED BY: SM	NO. 24GA28047600	JAMES D. HEEREN	SHEET 9 OF 10
SCALE: AS SHOWN	NEW JERSEY PROFESSIONAL ENGINEER		DWG. NO. DRG-09
DATE: MAY 2022	NO. 24GE04031000		

Q:\50134698\50134698-TOF10_CapeMay_CAD\Envr\CAPE MAY CHANNELS_DREDGE_PLAN_PERMIT.dwg

